

# THE DYDDI DIGEST

July 2025 - 598

Didmarton's local magazine incorporating  
Leighterton, Boxwell and Sopworth



## RUBBISH DATES

All Bins – Friday 4th & 18th July

Food Waste— Friday 11th & 25th

[www.didmartonvillagehall.co.uk/#Dyddi](http://www.didmartonvillagehall.co.uk/#Dyddi)

### Diary Dates

9th WOW

11th Film Club

15th St Swithin's day

23rd WOW

31<sup>st</sup> Harry Potters birthday



## A Season of Community and Connection

As summer settles in, our village comes alive with colour, warmth, and the joyful sounds of community. The longer days invite us outside—into gardens, along footpaths, and onto village greens where friendships are renewed and new stories begin.

July marks a time of growth and maturity in our fields and gardens. From the weekly market to local events and informal gatherings, there are countless opportunities to connect, volunteer, and support one another.

Let's take a moment to appreciate the small acts of kindness that make our village special— the neighbour who checks in, the volunteer who tends the flower beds, or the local postman who knows your name.

As always, we welcome your stories, photos, and news for next month's issue. Please email  
to us at the address below.  
[editor@dyddi.co.uk](mailto:editor@dyddi.co.uk)

## TELEPHONE NUMBERS

Phoenix, Tetbury Surgery – 01666 502303

Police – to report incidents – 101

Tolsey Surgery, Sherston – 01666 840270

Tetbury Hospital – 01666 502336

Oldbury Garage – 01454 537016

Dyddi Editor – editor@dyddi.co.uk

Parish Council, John Hammond – 01454 238373

Village hall bookings :

didhallbookings@gmail.com



## BABYSITTING CONTACTS

Elizabeth Darbyshire – 07702 693100

Francesca Goodwill - 07483 839082/07972783679

Esmé Kay 07850 247096

Chloe Wallace 07984 922717

Please email the editor if you would like to add your name to the list.



**Make a financial donation—DVHC Committee 30-91-99 02319866**

**All editorial contributions should be sent before the 15th of each month—  
anyone can offer a contribution, go on, express your inner writer even more on**

**[www.didmartonvillagehall.co.uk/#Dyddi](http://www.didmartonvillagehall.co.uk/#Dyddi)**

editor@dyddi.co.uk

# Didmarton Summer Nature Scavenger Hunt

Can you find all of these around the village?

(✓ Tick them off as you go!)

What to Find

- ☐ A feather
- ☐ A pink wildflower
- ☐ A snail shell
- ☐ A stick shaped like a letter
- ☐ A buzzing bee
- ☐ A patch of moss
- ☐ A pine cone or acorn
- ☐ A butterfly resting on a flower
- ☐ A bird singing in a tree
- ☐ A rock bigger than your hand
- ☐ Something soft
- ☐ Something that smells nice

Bonus challenge:

Draw your favourite find below!

Collect three natural things that feel different:  
soft, rough, smooth







THE DYDDI DIGEST

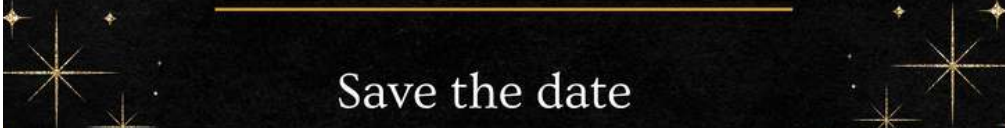


# Dd 50

## 1975-2025

Saturday 4<sup>th</sup> October | At 4.00pm - 08.30pm

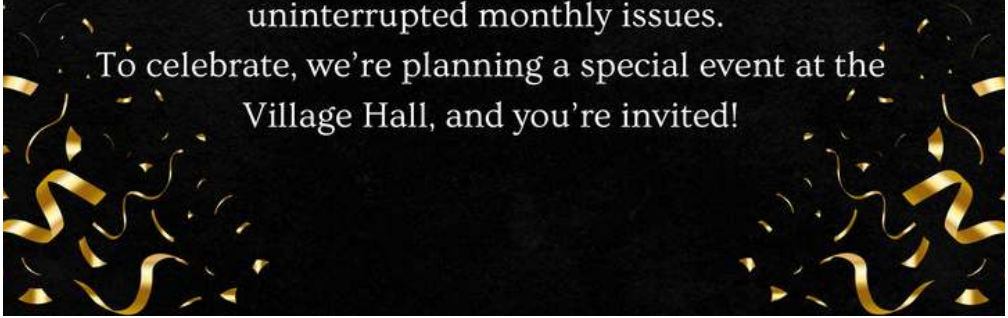
---



### Save the date

Our beloved village magazine has reached a remarkable milestone: 50 years of uninterrupted monthly issues.

To celebrate, we're planning a special event at the Village Hall, and you're invited!



## Match report: Didmarton Cricket vs. The Whole Hog (Malmesbury)

A peculiar start greeted us with an unmowed outfield barely revealing the all-weather pitch. Marco, confused, almost headed to Malmesbury CC instead. The field offered a partial cut—only a 10m oval around the square—which added to the challenge.

We bowled decently but were unlucky. Misfortune struck when Jimmy collided with Martin while chasing a catch, gifting their best batsman a reprieve. He made us pay dearly. Fergus claimed our sole wicket with a smart caught-behind, but wides proved costly. Despite the scorecard, our fielding was commendable.

Chasing 155, we stumbled early, losing two wickets for just one run.

Birthday boy Barrett fell for a duck—perhaps dreaming of cake instead of cricket! Teifion and Ant brought hope, smashing the ball around the park in an uplifting partnership. However, regular wickets after their stand spelled trouble. Ollie and George offered brief resistance, and with three overs left, needing 24 runs, we still had a chance.

Ant and the elder Johnson faced their best bowlers but ultimately fell short. Ant, caught and bowled on the bouncy all-weather pitch, couldn't replicate his earlier heroics. Ironically, he fell to the man Barrett had dropped earlier. We ended 18 runs shy.

Post-match, we salvaged pride in a boat race challenge, emerging victorious. Perhaps our true calling lies in Morris dancing and beer drinking?



The June 100 Club draw took place on June 10th at the DVHCC held in the Village Hall. The prize winners were:-

1<sup>st</sup> prize £20 Mark Wallington

2<sup>nd</sup> prize £15 Sarah Bugg

3<sup>rd</sup> prize £15 Sally Hewlett

4<sup>th</sup> prize £10 Stuart Tettmar

**Sue Cook and Sue Hammond**

SAVE THE DATE

Saturday 22nd November 2025

For one night only we are hosting an unusual event for this village :

COMEDY NIGHT with Demitris Deech

“Thought of as one of the best ad-libbers in the business Demitris’s comedic mind questions subjects from politics to Tic Tacs. If that doesn’t do it, he’ll confess his addiction to appearing on TV Shows (he was on the last ever episode of Blind Date and picked his nose on Question Time). His material has sprinklings of surrealism, with historical, topical and educational undertones giving his audiences a heaped tablespoon of funny.” - comedycv.co.uk

LOOK OUT FOR MORE INFORMATION IN THE FOLLOWING EDITIONS OF THE DYDDI.



# Speed watch - May Summary



## Speedwatch Summary for May 2025

We were able to complete our 6 planned sessions in May. The new road surface didn't seem to have a huge impact on the speed of passing traffic. Unusually the highest number of vehicles caught speeding were at the St Lawrence's end of the village.

Sue Hammond & the speed watch team.

Date & Time	Site	Pos IDs	Highest Speed & Time	Total Vehs	Comments
Mon 19 8:15 to 8:45	Village Hall	3	41mph @ 0820hrs	242	
Mon 19 17:00 to 17:30	St Lawrence	8	3 at 38mph between 1710hrs and 1723hrs	227	
Tue 20 8:00 to 8:30	St Lawrence	3	3 at 38 mph between 0815hrs and 0825hrs	171	
Tue 20 17:45 to 18:15	Village Hall	5	39mph @ 1759hrs	85	
Wed 21 17:30 to 18:00	Village Hall	3	37mph @ 1737hrs	259	
Thurs 22 5:15 to 5:45	St Lawrence	6	44mph @ 1724hrs 1 @ 40mph, 1 @ 41mph	186	One vehicle flagged as 'no tax' but had long MOT
<b>Totals</b>		<b>24</b>		<b>1170</b>	<b>4 over 40 mph</b>





# 1975—As ‘Twas—June 2025

(This magazine has been published every month since No. 1 in October 1975)

‘Didmarton’s own newspaper – the first 50 years – Part Six’

The archive copies of DYDDI digest hold a mirror up to the changes in village life, and a progression of technology. Readers of a certain age will remember many of the new ideas which came into the world of publishing when they first occurred. ‘Fleet Street’ became ‘Canary Wharf’ as newspaper owners sought, by fair means and foul, to wrest daily control of their publications away from print workers. More recently the advent of the World Wide Web has allowed people to communicate easily with each other and, with the development of individual cell phones or ‘mobiles’, to be in touch with anyone, almost anywhere and at any time. DYDDI digest began life as a typewritten collection of pieces and then each one could be glued to A4 sheets to allow copying. From issue no. 165 (1989) the editors, then Catherine Muggleton and Julie Whitlow, had access to a word processor. This changed the physical act of striking a lead typeface through an inked ribbon on to a sheet of paper to a digital display on screen. It allowed the composition of a document in a format which could be edited, cut and pasted before anything was applied to paper; the ‘hard copy’ as it became known. Gradually the digital formatting allowed the inclusion, firstly of simple graphics, e.g. ‘emojis’, and then photographs. Between the development of word processing and the introduction of car phones and then cell phones, most photographs were captured on early digital cameras. Photocopiers connected via telephone lines could create a facsimile of a document miles away and so we had the ‘fax’ machine. Some are still in use, particularly where a ‘hard copy’ of a legal or medical document must be presented.

As electronic components, especially ‘chips’ and batteries, decreased in size and doubled in ‘memory’ processing every 18 months, desk computers, then ‘laptops’, ‘ipads’ and the like, spread beyond the world of business and into homes. ‘Smart’ phones began to appear, allowing users to combine many forms of communication; speech, texting, photos, video, music, and to ‘save’ the results into ‘memory’. By the turn of the century news programmes began to show scenes of catastrophe where the first requirement appeared to be a power supply to recharge batteries in mobiles, something impossible to imagine 10 years earlier.

Throughout these changes DYDDI digest has absorbed the methods of easier creation of readable material. It continues to offer it in a hand-held device, the few sheets of folded paper herewith. For fifty years. Well done, Didmarton!



SHERSTON GARDENING CLUB

## Next Meeting: Tuesday 1<sup>st</sup> July 2025

Speaker is Sally Morgan on “Gardening with Climate Change”

### Cuttings

John Biddulph was our June speaker and he provided a fascinating insight into the beautiful property that has been in his family for five generations. Rodmarton Manor sits in eight acres of gardens just outside Tetbury so qualifies as ‘local’. We were treated to a presentation that spanned over a century in the life of this Arts and Crafts house and grounds, developed and improved over the years. Today the family welcome hundreds of visitors to their open days, events and gardening courses.

Sally Morgan is to be the speaker at our 1<sup>st</sup> July meeting. She is a successful published author who has created a resilient, climate-wise garden. She is passionate about teaching how to adapt your garden to cope with volatile weather extremes and other effects of a rapidly changing climate. It’s no longer gardening as usual.



*Some of the books written by Sally Morgan, our topical July speaker*

### Clippings

Club meetings will remain throughout 2025 on the first Tuesday of each month (apart from August) at the British School Room, Cliff Road, 7.00pm for 7.30pm start. Plant ID, plant sales, raffle, gardeners’ question time, jobs in the garden for the month and friendly chat over homemade refreshments.

New members are always welcome. The annual fee is £20 single, £35 joint, U18’s free. We communicate with members via a monthly newsletter, on the [sherston.net](http://sherston.net) website and on our SGC Facebook page. Our Secretary can be contacted at [sherstongardeningclub@gmail.com](mailto:sherstongardeningclub@gmail.com)

## Community

It may have been on the cool side for our Summer Social at the home of Lise and Chris White last month but it didn't matter. The gardens at Hookshouse Pottery are glorious and members were happy to put on an extra layer to stroll round and admire the colourful borders. As the garden had been open for the National Gardens Scheme that week, we were able to enjoy wine and canapes under cover in the marquee. Many thanks to our hosts for their hospitality.



## Calendar

### 2025 PROGRAMME of TALKS

- July 1st. - 'Gardening with Climate Change' by Sally Morgan.
- September 2nd. - 'Gravel Gardening with Low Maintenance Plants' by Derry Watkins.
- October 7th - 'Confessions of a Plant Freak' by Nick Macer.
- November 4th. - 'Gardening with Wildlife' by Dede Liss.
- December 2nd. - Christmas Decoration Demonstration with Julia Armstrong.

In addition, we are planning a trip to the American Museum gardens in Bath in mid-September, of which more details later.



# YOUR MIND AND BODY MATTERS

A great way to lose weight is to eat 16% less at each meal along with eating slower, which gives an end result of a better digestion a better relationship with food and weight loss - sounds like a no brainer to me.

Liverpool University did an analysis of 22 slow eating studies and the main outcome was the participants consumed fewer calories eating slowly and they are not hungry afterwards.

Eating on the go because you've too much to do or at work actually elevates your stress levels without you realising it. It's also bad for your digestion - this we have always known! The stress activates your flight or fight response, our sympathetic nervous system, which makes it harder for our body to process food efficiently.

By eating slower and chewing each mouthful and savouring every bite, we can engage our parasympathetic system which then goes into rest and digest. Studies also show that taking time with our food we tend to eat less as we have time to produce the hormones which tell our brain we are full.

So in this busy world we live in and with obesity being such a problem taking on board the above could be the start of a better relationship with food. These little nuggets of information are always helpful even if we are ok but we often have someone in our life that could benefit. Also as we get older our portion size needs to be reduced (I have a huge problem with that)! Put the two together smaller portions and then another 16% we should see results!

Ruth x





# TETBURY GOODS SHED

A R T S C E N T R E

## HIGHLIGHTS FOR JULY AND AUGUST



- July 5**      **Alfie Moore: A Face For Radio:** a surprising career shift in his mid-40s turned Alfie Moore from a street cop to the star of his own Radio 4 show “A Fair Cop”. It proved an immediate success and his wealth of hilarious stories come from experiences you couldn’t make up! Tickets £18 in advance. 8pm
- July 25**      **The Wild Robot (U):** A children’s showing of an adaptation of Peter Brown’s New York Times bestseller, *The Wild Robot*. Follow the adventures of Roz the Robot shipwrecked on a desert island. Tickets £7.50 in advance. 6pm
- July 26**      **Jazz with BD Lenz Trio and guest Kim Cypher:** Enjoy an evening of jazz, blues funk and soul with the acclaimed guitarist and his popular guest. Tickets £15 in advance. 7.30
- August 16**      **As You Like It - Festival Players Open Air Shakespeare:** Probably the bard’s most entrancing performance of mistaken identity and romance in the forest is ideal for a summer evening. Tickets £17 in advance. 7pm
- August 31**      **Off The Rails:** Our popular summer festival day for all the family with music, story-telling, impromptu entertainers, street food and a beer tent....all we need is you! Tickets £8.50 in advance, under 18s free. 11-6.

For more details of our other events including film, talks, exhibitions, and afternoon tea concerts and to book tickets visit our website:

[www.tetburygoodsshed.co.uk](http://www.tetburygoodsshed.co.uk)





# Badminton Benefice Festival of Music 2025

*artist* **SUE BOWN**

*music* **WOTTON CHAMBER GROUP**

St Arild's Church, Oldbury on the Hill

*Echoes of St Arild's - Art & Music in The Cotswolds*

**Free entry** with a collection in support of Youth Music and Didmarton Church



Visit this beautiful ancient country church of St Arild, enjoy a refreshing drink and view the stunning artwork of local artist Sue Bown.  
All accompanied by the soothing music of Wotton Chamber Group.

**OPEN FROM 1PM | DOORS CLOSE 5PM**

**06  
JULY  
2025**

AT  
ST. ARILD'S CHURCH  
OLDBURY ON THE HILL

MORE INFORMATION AVAILABLE AT

[WWW.BADMINTONBENEFICE.COM](http://WWW.BADMINTONBENEFICE.COM)

**YOUTH  
MUSIC**



# Cotswold District Council update

## Biochar and Carbon Savings

The Missing Link scheme produced five tonnes of biochar, saving 13 tonnes of CO<sub>2</sub> – equivalent to five London-Perth flights. Biochar was created from vegetation removed onsite and is used to fertilize plants and capture microplastics.

## Adder Translocation

Adders translocated through the scheme are thriving in their new locations.

## New Council Leadership

Cllr Mike Evemy is the new Liberal Democrat Group leader and CDC leader, succeeding Cllr Joe Harris. Cllr Evemy has been deputy leader since 2019, representing Siddington & Cerney Rural ward.

## Unitary Authority Transition

Plans for Gloucestershire's transition to a unitary authority could dissolve CDC by 2026. Options include creating one or two unitary authorities, with the final decision due November 2025. Parish councils will play a larger role but may lead to higher local taxes.

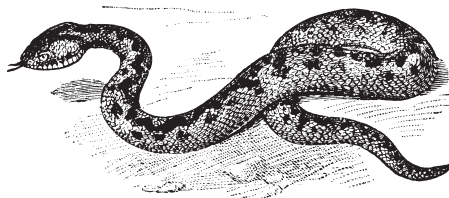
## A417 Missing Link

Lessons from the A3 Hindhead Tunnel are being applied to the A417 scheme to minimize issues with disused roads. The transition aims to avoid antisocial behaviour and maximise benefits.

Councillor Tony Slater

Cotswold District Council

Email: [Tony.slater@cotswold.gov.uk](mailto:Tony.slater@cotswold.gov.uk) | Tel: 07793669930



**BT17—July25 Dd Brain Teaser**  
Given the initials and number  
of letters, for what do they  
stand?

*Answers to BT16: HD D-Day, Victory in Europe  
Victory in Japan, Ten Sixty Six, Fifteen Eighty  
Eight S The Bard, William, Stratford on Avon,  
April Twenty Third, First Folio M O T Hour, Year,  
Solstice, Nanosecond, Equinox B Knife, Saw,  
Razor, Grass, Sword M White Line, Corner Post,  
Finishing Tape, Permanent, Chalk*

**MAGAZINES**

D d 5 6

P E 7 3

T L 3 4

C 6

G 9

**CARDS**

B 8

C 6

C 9

R 7

P 4

**STEEL**

S 9

C 6

T 8

S 9

B 5

**WEAPONS**

G 3

B a A 3 3 5

L 5

K 9

B 9

**ORGANS**

B 5

L 5

S 4

H 7

C 6

# SUDUKO

For the uninitiated: to solve each puzzle, each row, each column and 3x3 box must contain each of the numbers 1 to 9.

## EASY !!

		9						
8			3		1	9	6	
1	4		6					
			5	1		3	4	
					4			5
			9	6		2	8	
9	6		8					
5			2		7	8	3	
		3						

## NOT SO EASY !!

		3				7		
		1				5		
			3		4			
				5				
7			6	8	1			9
	6						5	
5	4			6			3	2
			4		8			
	9	8	2		5	4	6	

Answers to the June quizzes:

'Easy'

5	2	1	8	7	4	6	3	9
6	7	3	9	5	1	8	4	2
8	9	4	6	3	2	7	5	1
4	5	9	1	6	8	2	7	3
2	3	8	7	9	5	4	1	6
1	6	7	4	2	3	9	8	5
3	8	5	2	4	6	1	9	7
9	1	6	5	8	7	3	2	4
7	4	2	3	1	9	5	6	8

'Not so Easy'

9	3	1	6	5	7	4	2	8
5	6	2	3	8	4	7	9	1
7	8	4	1	2	9	3	5	6
1	9	6	2	3	5	8	4	7
2	5	7	4	1	8	9	6	3
3	4	8	9	7	6	5	1	2
4	7	5	8	6	1	2	3	9
8	1	3	5	9	2	6	7	4
6	2	9	7	4	3	1	8	5

# **Save the Date!**

## **Didmarton Boules 2025**

**-for the seventh year in a row**

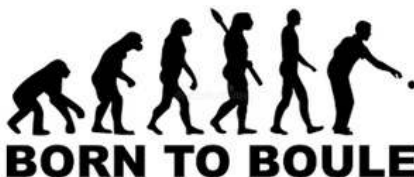


**The Didmarton Boules Tournament will take place on Saturday, 6th September 2025. To be held as usual, in the carpark of THE KINGS ARMS from 10am until late afternoon.**

We shall be finalising the details very soon for the event and are changing the format slightly this year.

### **Do you have the boules to enter?**

(if not, we can provide some for you. Please note charges apply for personal fittings)



Get ready for some friendly competition and village fun!

More details to follow soon – mark your calendars and start practising!



Roxzanne@AllaboutSites

# Web-design

## AllAbout Sites—Keeping the Internet Simple

*I promise she will do a **VERY good job**—Jonty Evans Olympic Eventer*

[info@allaboutsites.co.uk](mailto:info@allaboutsites.co.uk)

### 07833 433337—Roxzanne Fox-Roberts

*Wow since Roxzanne sorted my website traffic has increased and bookings are up, I would highly recommend her professional services, fantastic job!"*

## TV Problems? Poor Picture?

Call

**AARDVARK**   
**INSTALLATIONS**

website: [www.aardvarkinstallations.co.uk](http://www.aardvarkinstallations.co.uk)

**New TV Aerials - Freesat Installations - Extra TV Points**

**Set-up & Installation of equipment - TV wall mounting**

**CCTV Installations - WiFi improvements & Data**

**Networking**

**Domestic Electrician**



**01666 734989** Email [aardvark@alpens.co.uk](mailto:aardvark@alpens.co.uk)



## **\*CLASS 7 MOT now available\***

Find us at our new premises around the  
corner at Home Farm



ALL MAKES OF CARS, FOUR WHEEL DRIVES AND  
LIGHT COMMERCIAL VEHICLES

- ✓ **MOT Testing Class 4 and now Class 7**
- ✓ **Vehicle Repairs**
- ✓ **Servicing**
- ✓ **Diagnostics**

Free loan cars  
are available

Call us on 01454 238 700  
or visit [www.mottetbury.co.uk](http://www.mottetbury.co.uk)



HOME FARM, KNOCKDOWN, TETBURY GL8 8QY



Your local Multi-Award winning Landscaping & Garden Design specialists

For a free estimate contact Chris Blackwell:

**m: 07939 101520 t: 01453 835032**

**e: [chris@goldenstones.co.uk](mailto:chris@goldenstones.co.uk) [www.goldenstonesgardening.co.uk](http://www.goldenstonesgardening.co.uk)**

## **Try Tetbury Hardware First!!**

We have been trading in Tetbury for over 13 years now supporting customers both locally and those visiting the area.

We hope that we have the range of products to help our clients overcome many day-to-day situations. We also delivery locally.

**Pet Products:** We can supply most leading brands of Foods for all animals as well as a wide range of Bedding, Toys, Leads etc. Try us first before you travel you may be surprised how competitive we can be.

**Garden Care:** Our range of garden products is extensive so give us a call.

We also stock Homewares, Electrical Items, Fuels, Cleaning and Decorating Products. We can also Cut Keys, Transfer Videos and Tapes as well as Shoe Repairs (weekly turn-around)

**Tetbury Hardware 30a London Road Tetbury**

**01666 500353**

**MATTHEWS  
OF MALMESBURY**

Est 1880

**MATTHEWS  
OF TETBURY**

Est 1880

# INDEPENDENT FUNERAL DIRECTORS

Traditional funerals and woodland burials.

24 hours a day, 365 days a year.

Interest free pre-payment funeral plans available.

**OUR FAMILY WILL CARE FOR YOUR FAMILY**



**Golden Charter**  
Funeral Plans



Malmesbury

**01666 822216**

7 BURNHAM ROAD, MALMESBURY  
WILTSHIRE SN16 0BQ  
WWW.MATTHEWSOFMALMESBURY.COM

Tetbury

**01666 505199**

23 MARKET PLACE TETBURY  
GLOUCESTERSHIRE GL8 8DD  
WWW.MATTHEWSOFTETBURY.COM



## Artisan Jack

### Your local nose-to-tail butcher

Proper bacon, handmade burgers, award-winning sausages, local venison, pork, lamb, beef & chicken

Prepared and cut-to-order by Jack, an award-winning & traditionally-trained artisan butcher & curer with over 12 years' experience.

FREE contactless delivery within a 15-mile radius of Tetbury every FRIDAY min. £30 spend, £3 delivery charge on orders under £30. £4 Delivery charge applies on addresses over 15 miles & up to 30 miles max, no min. spend

email: [butcher@artisanjack.uk](mailto:butcher@artisanjack.uk) to sign up to our weekly e-newsletter

Order by 9am TUESDAY for same FRIDAY delivery

All meat is fully free range & from high welfare farms & abattoirs

Our retail packaging is either 100% recyclable, biodegradable or compostable

F: ArtisanJackUK. I: #artisanjackuk

# JUST HEATING LTD.CO.UK

Your Local Oil, Gas and LPG Central Heating Specialists

We are proud to employ a fantastic team of Gas Safe and OFTEC qualified engineers who are committed to providing great service.

Our reputation has been developed through hard work and reliability making us the number one choice.

- Boiler Servicing and Repairs
- Boiler and oil tank replacements
- Hot water cylinders and radiators
- Free no obligation quotes
- Up to 12 years warranty
- 0% Finance



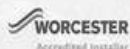
01249 309 309

info@justheatingltd.co.uk

www.justheatingltd.co.uk

2 The Old Dairy  
Charlton Park Estate  
Malmesbury, Wiltshire  
SN16 9DG

\*T&C's apply



Proud members of  
**Checkatrade.com**  
Where reputation matters





**COTSWOLD**  
CAR CHARGE

# DOMESTIC EV CHARGER INSTALLATIONS

Free no obligation quote

Tel: 01453 497044

Email: [mark@cotswoldcarcharge.co.uk](mailto:mark@cotswoldcarcharge.co.uk)

[www.cotswoldcarcharge.co.uk](http://www.cotswoldcarcharge.co.uk)



*Lucy Tom*  
INTERIORS

Sherston Soft Furnishing Studio  
Noble Street, Sherston SN16 0NA

01666 841433

07813 877509

[lucy@lucytom.com](mailto:lucy@lucytom.com)

- Projects undertaken in all areas of interior design and styling
- Curtains and blinds handmade by our experienced team
- Extensive library of fabric pattern books
- In-house modern and traditional upholstery
- Box seat and scatter cushions
- Visit our shop for homewares, gifts, greetings cards and much more!



The on-site **Courtyard Café** serves

Espresso Coffee, Hot Chocolate,  
Herbal Teas, Home-made Cakes,  
Sandwiches and Toasties



Ask  
us about  
**INTERIOR  
SHUTTERS**  
from Shutter Frontier





# 10% off



## GAS & OIL BOILER SERVICING

Book your GAS / OIL boiler service

this summer & receive 10% off  
the service price\*



\*Appointments must take place  
before 31 August 2025  
Contact us now to book



TELEPHONE  
01666 503632

EMAIL

info@indplumbingandheating.co.uk

WEBSITE

www.indplumbingandheating.co.uk

NOW ACCEPTING STUDENTS!

### FIRST STEPS & CARLY ELIZABETH SCHOOL OF DANCE HAWKESBURY - UPTON

We welcome students of all ages and skill levels.  
Pre-School/Baby Ballet - Advanced

CLASSES AVAILABLE WITHIN  
HAWKESBURY UPTON VILLAGE HALL GL19 1AU

I.S.T.D GRADES, VOCATIONAL & PROFESSIONAL DANCE  
EXAMINATIONS

IMPERIAL BALLET - MODERN - TAP - JAZZ - CONTEMPORARY

*Competitions / Exams / Festivals / Shows*

Email - carly\_hall@hotmail.co.uk

Tel - 07540339511



The  
**GEORGE**  
Veterinary Hospital



**Malmesbury 01666 823165**

Book your appointment here - scan for availability



**Nailsworth  
Tetbury**

**01453 705560  
01666 503531**

**Equine Vets**

**01666 826456**

**Farm Vets**

**01666 823035**

HELPING OUR CUSTOMERS GET  
THE MOST FROM COUNTRY  
LIVING FOR GENERATIONS



## VISIT OUR COUNTRY STORE

Open to the public and trade  
customers

Animal Feeds  
Animal Bedding  
Gardening Equipment  
Country Clothing  
Footwear



Levington



**T H WHITE**  
COUNTRY  
STORE

Sherston Works  
Knockdown  
Tetbury Glos GL8 8QY  
**01454 238181**  
[www.thwhite.co.uk](http://www.thwhite.co.uk)

## ADVERTISE IN THE DYDDI

Quarter Page £125 for 12 issues

Half Page £195 for 12 issues

Full Page £375 for 12 issues

Shorter runs available, please contact Alan:

[alantownsend1950@gmail.com](mailto:alantownsend1950@gmail.com)

### **Bank Details**

**Sort Code - 30-91-99**

**Account- 02319866**

**Name - Didmarton Village Hall**

Single full page advert in our highly successful monthly magazine.

**A full page is only £40 for a single month**

contact the editor directly: [editor@dyddi.co.uk](mailto:editor@dyddi.co.uk)

# THE ROYAL OAK

LEIGHTERTON

## *Summer Food & Wine Tasting*

### *5 Courses with Wine Flight*

*plus canapes & welcome drink on arrival*

**WEDNESDAY 9th JULY - 7pm**

**THURSDAY 10th JULY - 7pm**

**£77.50 per person**

***Pre-booking only, deposit required***

— — —

### **August Bank Holiday Weekend Opening Hours:**

**Saturday 23rd - 12pm - 11pm**

**Sunday 24th - 12pm - 10pm**

**Monday 25th - 12pm - 8pm**

**Tuesday 26th - closed**

**[info@theroyaloakleighterton.co.uk](mailto:info@theroyaloakleighterton.co.uk)**

**01666 890250**

