

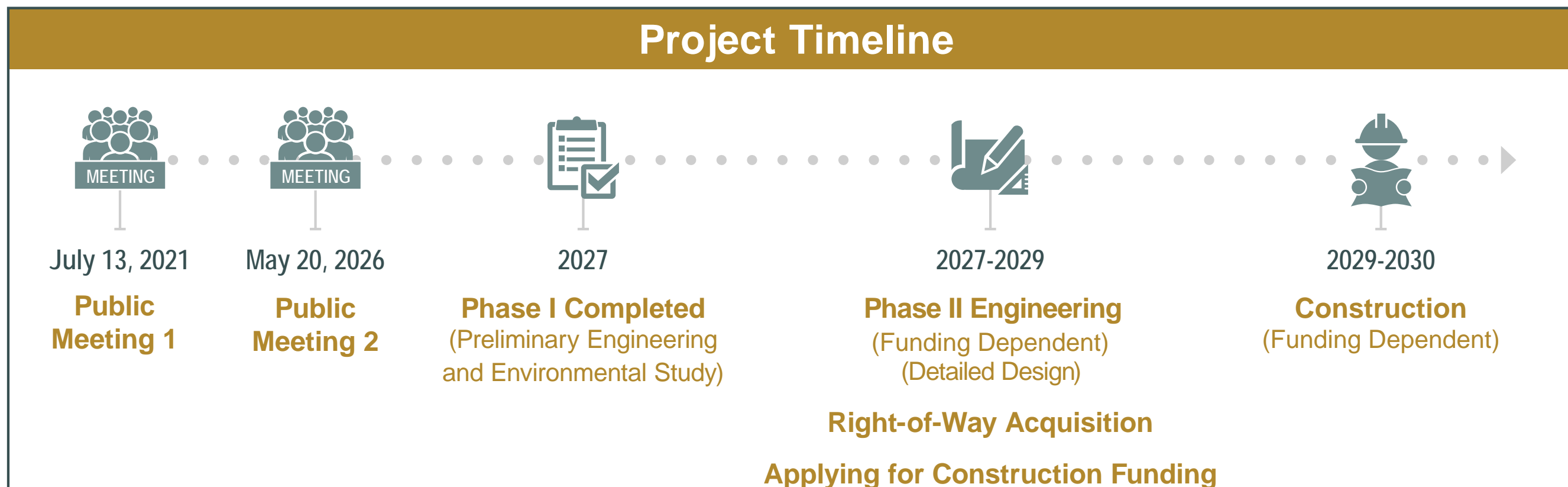


WELCOME!

Public Information Meeting

Fabyan Parkway at Illinois Route 31 to Illinois Route 25 over the Fox River
May 20, 2026

The Kane County Division of Transportation is interested in receiving input from all residents and stakeholders for the planned roadway safety improvements for Fabyan Parkway at Illinois Route 31 to Illinois Route 25 over the Fox River.





Project Purpose and Need

Fabyan Parkway at Illinois Route 31 to Illinois Route 25 over the Fox River

The purpose of this project is to address existing intersection deficiencies to improve safety and to accommodate both existing and increased motorist and pedestrian volumes traffic using this critical Fox River crossing.

The needs for this project are:

- Address geometric deficiencies in the existing roadway and multimodal infrastructure
- Improve safety
- Relieve congestion, improve travel times, and provide for expected traffic growth

Capacity + Safety

- Realigning the IL 31 and Fabyan Parkway intersection to eliminate a substandard intersection skew.
- Extend turn lane storages and tapers to meet IDOT policy.
- Improve capacity and reduction in crash rates on Fabyan Parkway by adding dual left turn lanes at the IL 31 intersection.
- Improve capacity and reduction in crash rates on Fabyan Parkway at the IL 31 and IL 25 intersections by adding right turn lanes.

Corridor Consistency and Connectivity

- The initial PEL study at the intersection of Fabyan Parkway and IL 31 determined that Fabyan Parkway meets warrants to be widened to six (6) lanes. It is expected that the existing bridge deck will be near the end of its useful life at the time the project is complete. Therefore, it was determined to extend the project across the bridge and include the IL 25 intersection to provide consistency.
- Project will provide connectivity to existing trails with the addition of the pedestrian route on the bridge.



Location Map

Fabyan Parkway at Illinois Route 31 to Illinois Route 25 over the Fox River





Existing Conditions

Fabyan Parkway at Illinois Route 31 to Illinois Route 25 over the Fox River

The existing intersections have protected permitted left turn lanes.

The intersection skew angle of Fabyan Parkway and IL 31 is 68° . IDOT BDE Design Policy is 75° .

There are no right turn lanes.

There is limited pedestrian accommodations.

Forest Preserve Properties.

Historic Properties (Campana).



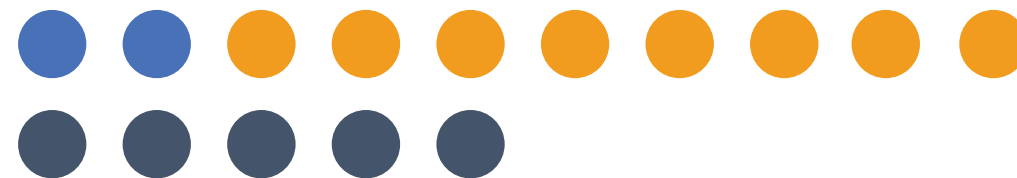
CRASH HISTORY (2018-2022)

- Fabyan Parkway at IL 31
126 total crashes



4 Type A Crashes
20 Type B Crashes
25 Type C Crashes

- Fabyan Parkway at IL 25
64 total crashes



2 Type A Crashes
8 Type B Crashes
5 Type C Crashes



Existing



Fabyan Parkway at Illinois Route 31 Intersection Looking East

Proposed intersection will have protected dual left turn lanes.

Multi-use path and sidewalk accommodations.

Addition of right turn lanes.

Protected traffic signal for left turns.

Proposed



Existing



Fabyan Parkway looking East across the bridge

Bridge will be widened to three lanes in each direction due to intersection geometrics.

Pedestrian accommodations will be added across the bridge.

Proposed



Existing



Proposed



Fabyan Parkway at Illinois Route 25 Intersection Looking East

Protected traffic signal for left turn lanes.

Addition of right turn lanes at the intersection.

Multi-use path and sidewalk accommodations.

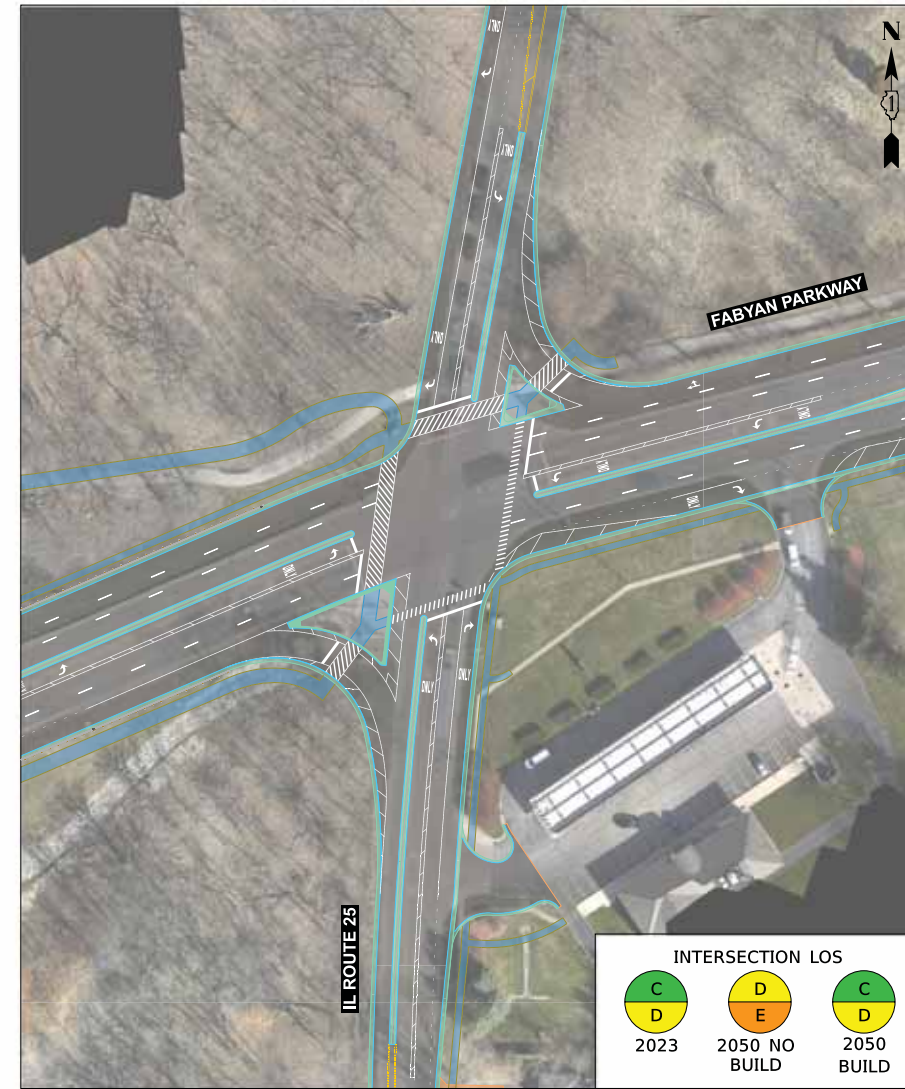




FABYAN PARKWAY IMPROVEMENTS – INTERSECTION LEVEL OF SERVICE



FABYAN PARKWAY & IL ROUTE 31 INTERSECTION



FABYAN PARKWAY & IL ROUTE 25 INTERSECTION

LEGEND



LEVEL OF SERVICE (LOS) COLOR CODE



2050 LEVEL OF SERVICE PROJECTIONS TAKEN FROM TRAFFIC ANALYSIS USING SYNCHRO 12



Land Acquisition

Fabyan Parkway at Illinois Route 31 to Illinois Route 25 over the Fox River



Fee Simple Acquisition

The acquisition of all rights and interest of real property.

Permanent Easements

Where underlying ownership is retained by the property owner, but access is permanently allowed during and after construction for maintenance of facilities such as drainage structures.

Temporary Easements

Where underlying ownership is retained by the property owner but access is temporarily allowed only during construction for items such as grading, driveway construction, and landscaping restoration.

Acquisition Timeline



Ownership

The ownership of the property is confirmed.



Plat of Survey

A plat of survey drawing is prepared to show the dimensions and the amount of property that is being acquired



Appraisal

An appraisal and an independent review appraisal will be completed per IDOT/ Federal policy.



Negotiations

Negotiations begin with an offer to acquire the necessary property at the appraised value
Eminent Domain (if necessary)
If a settlement cannot be reached, the matter is referred to the Courts for acquisition under the law of Eminent Domain.



Construction





COMMENTS

Complete a Comment Form

You can submit public meeting comments in multiple ways:

- Completing the Contact Form on the website
- Drop completed comment forms in the comment box
- Mail comment forms to the County; mailing address on comment form
- Email comments to the County; email address on comment form

Comments will be accepted through June 26, 2026 to become part of the public meeting record.

KANE COUNTY DIVISION OF TRANSPORTATION OVERVIEW DOCUMENTS GET INVOLVED CONTACTS

Fabyan Parkway from IL 31 to IL 25

Fabyan Parkway, bordered by the communities of Geneva and Batavia, crosses the Fox River between IL 31 and IL 25. The west leg of Fabyan Parkway is nearly perpendicular to IL 31 while the east leg is angled at approximately 88 degrees.

The resulting alignment causes an uncomfortable maneuver for through and turning traffic on Fabyan Parkway leading to a high amount of Turning and Rear End type crashes. Kane County DOT proposes to study both intersections to improve safety and alleviate congestion throughout the project corridor.

Upcoming Public Information Meeting:

Date: May 20, 2025
Time: 5:30 PM to 7:00 PM
Location: Covenant Living at the Holmstad



Thank you for joining us today.
Scan QR code for project website or visit:
<https://www.fabyanil31intersection.com/>