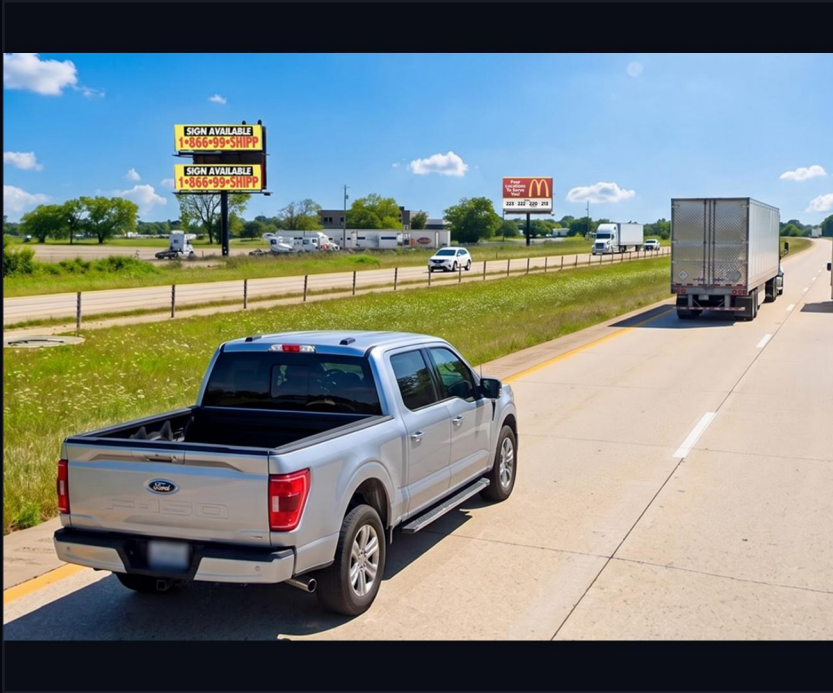


## I30 @ SRT 2 E Top

10243 US-67, Texarkana, AR | Texarkana, AR



### FEATURES

Perfect "Exit Soon" for inbound I30 traffic - visible when heading West toward Texarkana

### AUDIENCE & MARKET

4-WEEK IMPRESSIONS **650,128**  
 MARKET **Texarkana / Shreveport / Ark-La-Tex DMA**  
 COORDINATES **33.53556, -93.91127**

### SPECIFICATIONS

GEOPATH ID	<b>30648617</b>	READ	<b>L</b>
PLANT ID	<b>AR019T</b>	PANEL	<b>Top</b>
4-WK IMPRESSIONS	<b>650,128</b>	ILLUMINATED	<b>Yes</b>
SIZE	<b>10x40</b>	DESIGN SPECS	<b>6" bleed, Finish size 10.6x40.6, 300 DPI PDF</b>
FACING	<b>E</b>		

4/WK RATE: **\$595**

*Rate based on one year-term.  
Design, Print & Vinyl Install Available*

