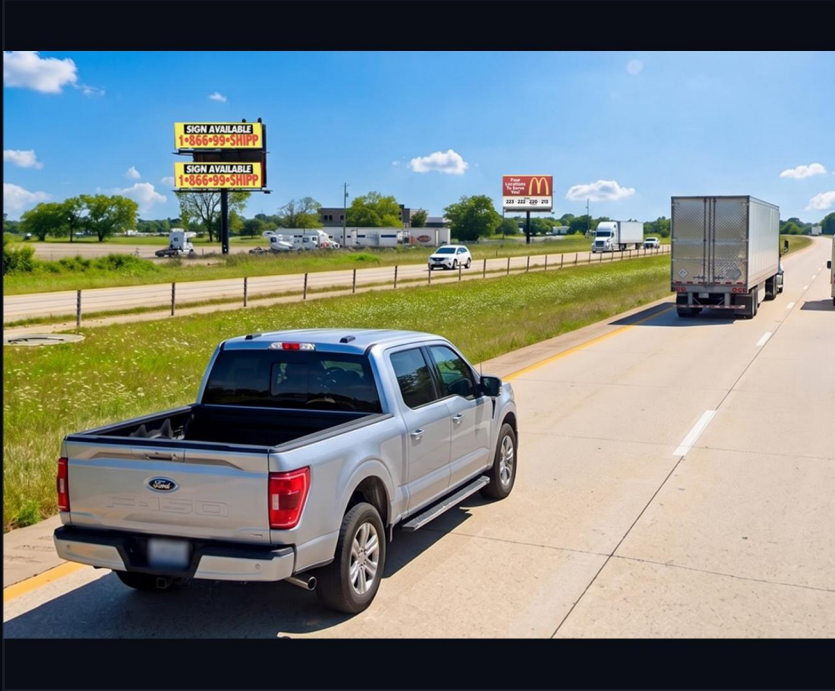


I30 @ SRT 2 E Bottom

10243 US-67, Texarkana, AR | Texarkana, AR



FEATURES

Perfect "Exit Soon" for inbound I30 traffic - visible when heading West toward Texarkana

AUDIENCE & MARKET

4-WEEK IMPRESSIONS **650,128**
 MARKET **Texarkana / Shreveport / Ark-La-Tex DMA**
 COORDINATES **33.53556, -93.91127**

SPECIFICATIONS

GEOPATH ID	30856979	READ	L
PLANT ID	AR019B	PANEL	Bottom
4-WK IMPRESSIONS	650,128	ILLUMINATED	Yes
SIZE	10x40	DESIGN SPECS	6" bleed, Finish size 10.6x40.6, 300 DPI PDF
FACING	E		

4/WK RATE: **\$695**

*Rate based on one year-term.
 Design, Print & Vinyl Install Available*

