



## WC-Connector Kit



### A **practical** connector kit from toilet block to waste tank

The **WC-Connector Kit** allows you to easily connect the 4" waste pipe from your toilet unit block to your waste tank.

It's tough, corrugated structure gives it adjustable bend and length (170 - 410mm) to simplify a sealed connection between the standard diameter 4" waste pipe from single toilet pans and / or toilet blocks.

**Applications: Single Toilet Pans, Toilet Blocks, Glamping Pods, Shepherd's Huts, Construction Site Toilets**

The two part kit comprises:

(1) a 4" ID tank- mounted collar and (2) a flexible pan connector with its inbuilt expanding seal.

*It is advisable to install an additional odour trap / air-admittance valve in combination with this unit.*

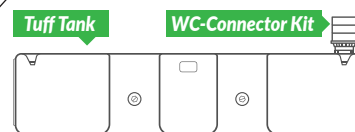
### Technical Data\*

Closed Length:	150mm
Extended Length:	410mm
Material:	Polypropylene
Inlet Diameter:	90-110mm

\*We reserve the right to amend the technical specification to improve the product without prior notification.

### Technical Advantages

- Inbuilt expanding seals
- Adjustable bend and length to simplify fitting
- Push-fit connector - no specialist installation
- Smooth internal bore: no sediment build-up
- Off-the shelf standard plumbing item
- Conforms to DIN 1389:2000-05
- The full kit also includes a tank adaptor to attach to the tank / waste receiver and facilitate an airtight seal when fitting the pan connector



### Fitting: e.g. for our Tuff Flat Tank

1. Remove a 5" lid from tank. Leave collar in place
2. Remove 2 x screws (from tank collar) and use them to secure tank adaptor inside collar
3. Push male end of pan connector into adaptor
4. Connect female end of pan connector to toilet
5. Consider an air-admittance valve / odour trap

### Associated product: Odour Trap





## Waste Tank Odour Trap & Breather Kit



### A **practical** two-way vent and odour trap for waste tanks

The waste tank **Odour Trap & Breather Kit** is a compact and robust two-way vent / air admittance valve. When fitted to a tank, its sturdy, replaceable filter is designed to eliminate bad odours in outdoor drainage applications.

**Applications:** **Waste Tanks, Septic Tanks, Grease Separators and Sewage Treatment Plants**

The main odour trap “body” contains a replaceable active carbon filter that operates as a two-way vent, filtering air in both directions. The odour trap's robust, low-profile design means it can be used vertically or horizontally and can be installed in hard-to-reach places. An initial filter cartridge is included as standard and should be replaced when saturated: you'll probably notice malodour.

### Technical Data\*

Temperature Range:	-20°C to +60°C
Cap & Base Diameter:	130mm (cap) / 110mm (base)
Height:	135mm
Projection above tank:	90-135mm (when fitted)

\*We reserve the right to amend the technical specification to improve the product without prior notification.

### Technical Advantages

- Resilient exterior for longevity
- Can be retrofitted to many waste tanks
- Push-fit connector - no specialist installation
- Easy filter replacement by lifting the cap

### Accessories

- Replacement filter / cartridge



**Carbon Filter** (Cover removed)

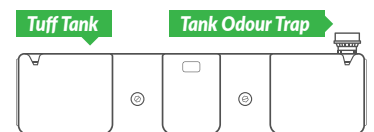
The full kit also includes **a tank adaptor** to allow a tight seal when fitting the odour trap. To connect 4" waste pipework **into** the tank, we also recommend our **WC-Connector Kit**.



**Tank Adaptor**



**Fitted Filter**



**Tuff Tank**

**Tank Odour Trap**

### Fitting: e.g. for Tuff Tank & Mini Tuff Tank

1. Remove a 5" lid from tank. Leave collar in place
2. Remove 2 x screws (from tank collar) and use them to secure brown tank adaptor inside collar
3. Push fit odour trap into 5" tank adaptor
4. Replace filter every 24 months, as a minimum

### Associated product: WC-Connector Kit





## Tank Odour Controls & Accessories

### Introduction

The natural consequence of holding waste in a tank - until such time as it can be emptied by a registered contractor - is that you may occasionally need to take measures to counteract unpleasant smells. There are both physical and chemical solutions to odour control, all available when you buy your tank, or as retrofit items at a later stage.

**At Plastic Solutions, we have you covered.**

### Waste Tank Odour Trap & Breather Kit



Eliminate bad odours with our robust **Waste Tank Odour Trap & Breather Kit**. Designed specifically for outdoor drainage applications, this is a robust two-way filter, vent and air admittance valve combined with **1 x tank adaptor**.

### WC-Connector Kit



The **WC-Connector Kit** is a flexible solution allowing you to easily connect the 4" waste pipe from your toilet unit block to your waste tank. Expanding seals on both toilet and tank sides make for an effective and airtight seal.

### Cumberland Blue - Toilet Tank Additive



Particularly suited to long periods between servicing, **Cumberland Blue** is a highly-perfumed, heavy duty, liquid additive.

This formaldehyde-free product has the consistency of a syrup, contains a non-staining blue dye and is available in cherry-berry fragrances.

### Waste Tank Cleaner - Recirc HD2 Clear



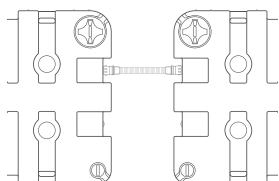
Fight unpleasant odours and kill bacteria with **Recirc HD2 Clear**, an all-round sanitiser and maintenance product.

Ideal for large plastic effluent tanks, this perfumed and transparent liquid acts to remove residues and cleanse tanks internally. Use weekly or in a yearly maintenance project.

### OTHER USEFUL ACCESSORIES

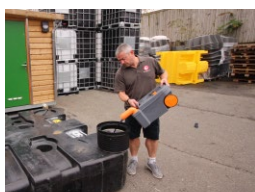
#### Tank Linking Kits

Create the exact waste volume you need.



#### Elsan® Tipping Point

Control how chemiloo waste is tipped into your tank.



#### High Level Alarm

Remotely monitor tank waste levels



**Contact us for more information**



## Apollo **High** Level Alarm

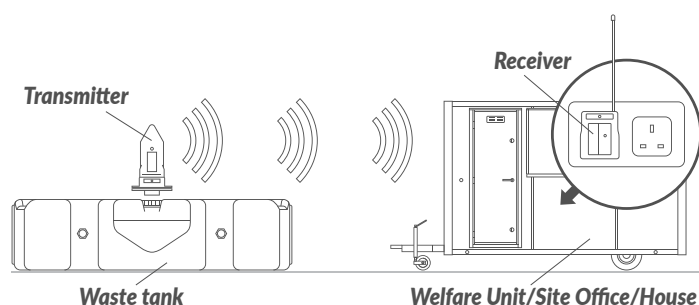
**SKU: TELE2**

Monitoring  
**HIGH** liquid  
levels in tanks



## Take control of **HIGH** storage tank liquid levels

This tank-mounted transmitter and plug-in receiver unit will give you peace of mind knowing your tanks are being monitored efficiently. Liquid levels in the tank are clearly displayed on the receiver unit for the user to view at their convenience. The devices are easy to install, are user friendly and will help you and your customers avoid those emergency call out scenarios where the tank is already overflowing and causing an environmental spill problem.



## How it works

The (black) transmitter monitors the level of liquid inside the tank and relays this data via a wireless connection to the (white) receiver unit, which is plugged into a standard electrical socket within a 200m range. The receiver unit displays the level of liquid inside the tank via an easy to read LCD display. There's also a red, flashing lamp and an audible, **high level warning alert**: 5 beeps on the hour.

## Features and Technical Advantages

- Site personnel can take 'ownership' of the level of liquid in their tank(s)
- Local monitoring should help prevent emergency callout charges with unmonitored tanks overflowing
- Liquid levels are shown on the inbuilt LCD displays on both transmitter (black) and receiver (white) units
- Audible alarm on receiver gives additional warning when tank is nearly full (at ca. 80% level)
- Suitable for almost any tank from 0.5 to 3 metres tall
- Quick and easy to fit: no specialist tools or wiring
- Receiver uses a 3 pin (UK & Ireland) electrical socket

## Applications

- Construction sites (toilet and shower block waste)
- Outdoor events, festivals, campsites (toilet waste collection tanks, transfer stations, Elsan® tipping points)

## Environmental Benefits

The **High Level Alarm** will allow you and/or your customers to plan servicing / emptying schedules only when they are required, avoiding unnecessary (too early) and emergency (too late) site visits.

**Save fuel. Avoid unnecessary journeys. Avoid costly spills.**

## Technical Data

Transmitter Size:	145mm h x 45mm w
Projection above tank:	135mm
Range between transmitter/receiver:	Up to 200m*
Minimum tank depth:	0.5m
Maximum tank depth:	3.0m
Estimated transmitter battery life:	7-10 years
Typical mounting hole size:	32mm diameter
* Under optimal conditions	

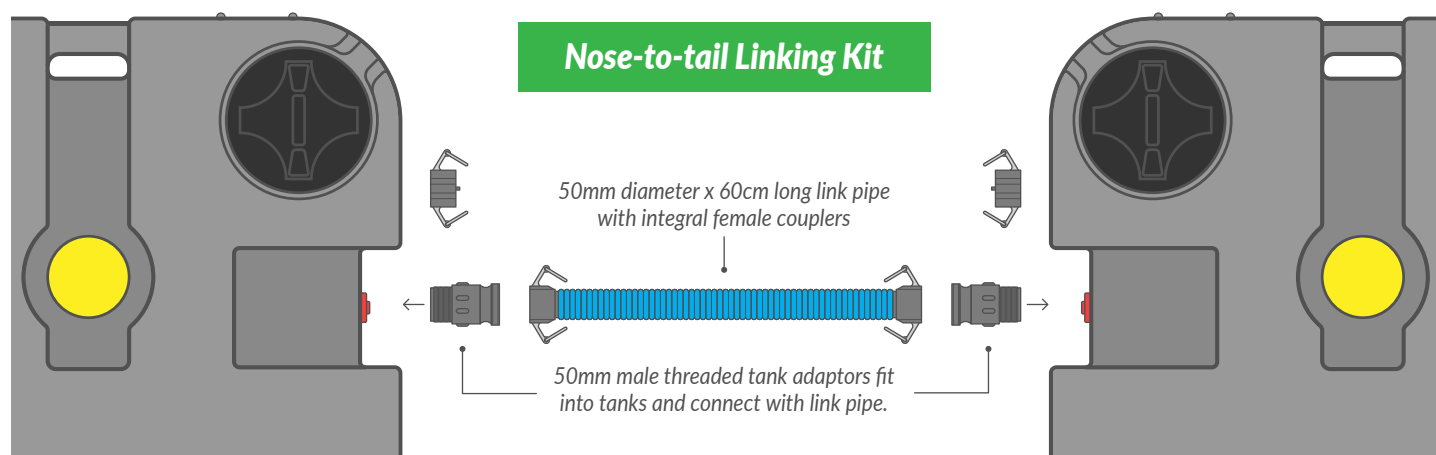
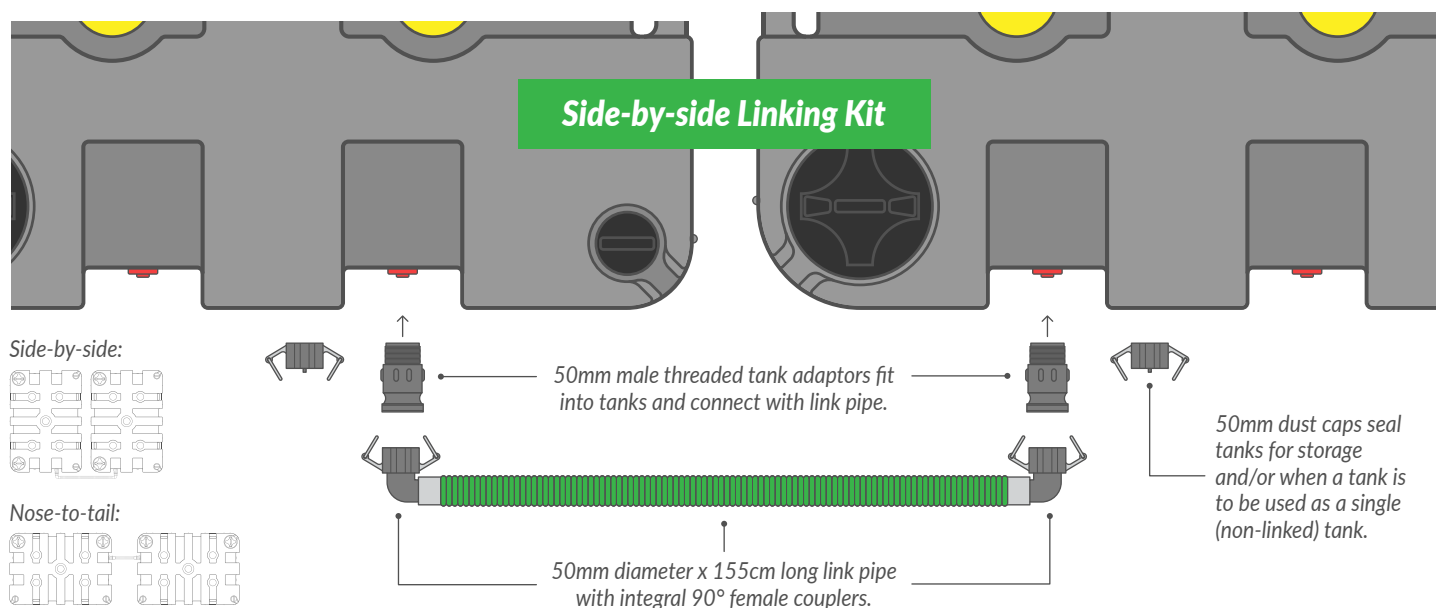




## Linking two or more Tuff Tanks

Easily extend the volume of waste you capture by using our linking kit to connect two or more tanks together.

**Valid for: all Tuff Tank variants since January 2015.**  
**TT3, TT500, TT750 & TT1000.**



## Flexibility - you choose...

With options to link tanks **side-by-side** or **nose-to-tail**, two easily accessible ports at each end of the tank allow simple connection from one tank to another... and so on... to give even greater flexibility on site.



**If you no longer need tanks to be linked you can easily convert them back into single, standalone versions. Simply empty the contents, remove the link pipe and fit the 50mm dust caps to the tank adaptors.**

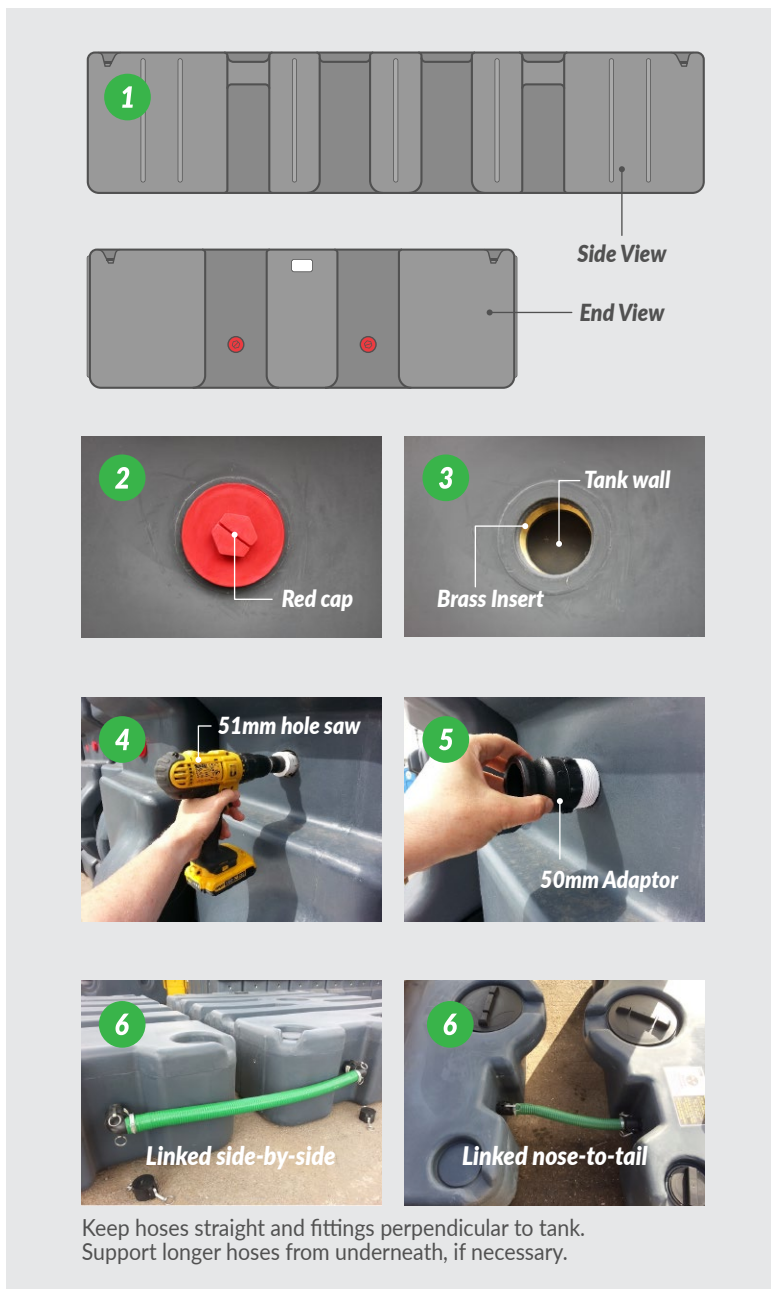


# Tank Linking Instructions

## 500, 750 & 1000 gallon tanks

- 1** Lay tank flat and ensure it is **empty** because you will be making a hole through the skin of the tank!
- 2** To convert each tank, **remove the red (or yellow) caps** to reveal the **52mm BSP brass inserts** (2 at each end).
- 3** Visualise how you want the linking kit to work and select the **appropriate inserts** you wish to convert (either for "side-by-side" or "nose-to-tail" linking).  
  
**NOTE:** The plastic exposed once red cap is removed is the wall of the tank and will need to be holed (drilled out) to allow the contents to flow through.
- 4** Use a **51mm hole saw** to **drill through** the centre of the port, **inside** the BSP brass threaded insert.
- 5** **Screw the 50mm male threaded tank adaptor** into the BSP brass insert. Use **PTFE tape** around the tank adaptor threads to create a **watertight seal**.
- 6** **Connect the linking pipe.** Always ensure that the linking pipe and tank fittings are **perpendicular to each other** to create a leak-free connection.

**NOTE:** When tanks are not linked, fit the 50mm dust caps over the tank adaptors, ensuring that the dust caps' locking rings are folded over securely. Your tank will now work as a single, standalone tank again.



## Additional Notes

- Always ensure tank is **empty** before carrying out any conversions or when returning tanks to stand alone use
- Multiple tanks can be linked to create the waste volume you require e.g. 3 side-by-side link kits will link 4 tanks
- Linked tanks must be same volume and at same level
- Tanks must not be stacked with contents on board
- Keep linking pipes and fittings perpendicular to tank
- Custom hose lengths are available - **call for details**