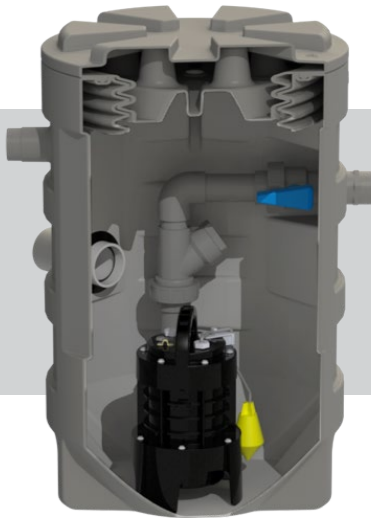




## Sewage Lifting Station - Sanifos® 280



### Waste water lifting station with automatic pumping

A submersible, 230v "grinder" or "vortex" pump mounted inside a 280 litre polyethylene, storage tank. Installed below ground, the storage tank includes multiple inlet points to "receive" toilet waste and grey water. As the tank fills with inbound waste water, the pump's inbuilt float switch rises with the liquid. At a pre-set level, the pump is activated and the tank contents are macerated / pumped away over height and distance to a mains sewer, holding tank or septic tank.

#### NOTES

- For private, commercial and small scale use.
- Used for pumping residential to industrial waste water when there is no sewer available or when the sewer is at too high a level for gravity drainage.
- Can be used to pump waste away from glamping pods to a more accessible waste tank / septic tank.

PLEASE CONSULT OUR LITERATURE ON CORRECT INSTALLATION OF THIS UNIT.

PLEASE CONSULT OUR DATA SHEET FOR TECHNICAL DETAILS ON THIS UNIT.

### Technical Advantages

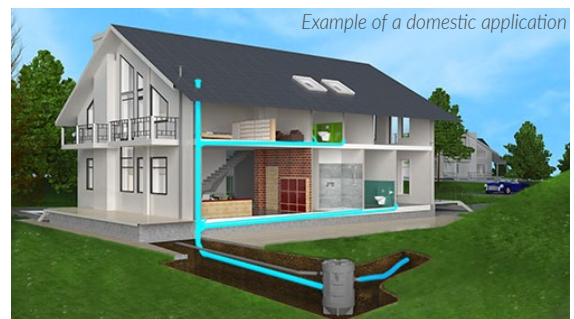
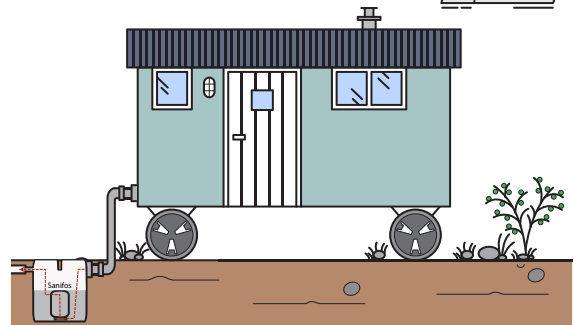
- Compact solution with automatic operation
  - Powerful, quiet motor
  - Multiple waste inlet drilling zones
  - Pre-assembled isolation and non-return valves
- Available with two pump options:
- (1) Grinder Pump: using robust cutting blades
  - (2) Vortex Pump: using circular churning motion

### Applications

- For 2-4 persons
- For garden office, shepherd's hut, glamping pod, small dwelling c/w WC, bathroom, kitchen, utility
- Generally buried: top surface flush with ground
- NOT intended for rainwater pumping



Example of a shepherd's hut application



Example of a domestic application

**Typical applications:** Collect waste from a glamping pod, shepherd's hut or small domestic dwelling, and pump waste away over height and distance.