

Accelerate your *impact*

A Personalized Path to Stronger Leadership

INSIGHT
Know yourself. Know your world.

- + **Behavioral Assessment**
> Deepen your self-awareness and understanding of the innate strengths, motivators, and blind spots that shape your leadership
- + **360 Evaluation**
> Gain a clear, candid picture of how you lead through structured feedback from peers, direct reports, and supervisors

1

DEVELOP
Think big.

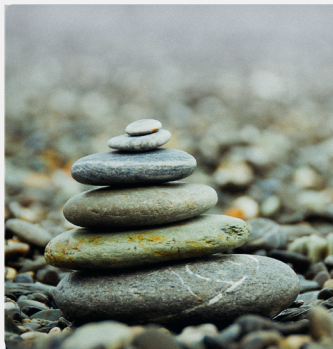
- + **Customized Learning Pathway**
> Targeted training built around your assessment outcomes, so your development is personalized to your needs
- + **Ten Personalized Coaching Sessions**
> Work one-on-one with an expert coach on the skills, habits, and mindsets that matter most for you

2

IMPACT
Work hard.

- + **Improve your leadership effectiveness with clarity, sharper skills, and a concrete way forward**
- + **360 Pulse survey to measure progress 90 days after program concludes**

3



Ideal for emerging leaders, high-potentials, and experienced managers ready to take the next step.

bâton | global



+1 234-245-6225 | info@batonglobal.com