



Nebraska Public Power District
Always there when you need us



Nebraska Public Power District
Always there when you need us

THANK YOU
for your participation!

We hope that we were able to address all of your questions today. We value your time and appreciate the opportunity to introduce this important project.

Your feedback is valuable and will help us with routing the transmission line.

You can submit comments by:

- Speaking with a project team member
- Viewing a property and commenting at a GIS station
- Leaving a completed comment form at the meeting
- Mailing a completed comment form
- Completing an electronic comment form on the project website at: nppd.com/HoltCounty-Antelope
- Calling: 888-677-4312

We encourage you to visit the project website periodically for updates on the project. Also, the virtual open house will be available for viewing on the project website until Friday, April 10, 2026.

We look forward to working with you!

Holt County-Antelope 345kV Transmission Line Project
nppd.com/HoltCounty-Antelope • 888-677-4312

Holt County-Antelope 345kV Transmission Line Project

Public Open House
March 24, 2026

Project Description

NPPD plans to build approximately 27 miles of 345,000-volt (345-kilovolt [kV]) transmission line to accommodate current and projected future loads and provide additional reliability and enhanced resiliency in the central Nebraska area.

Purpose and Need

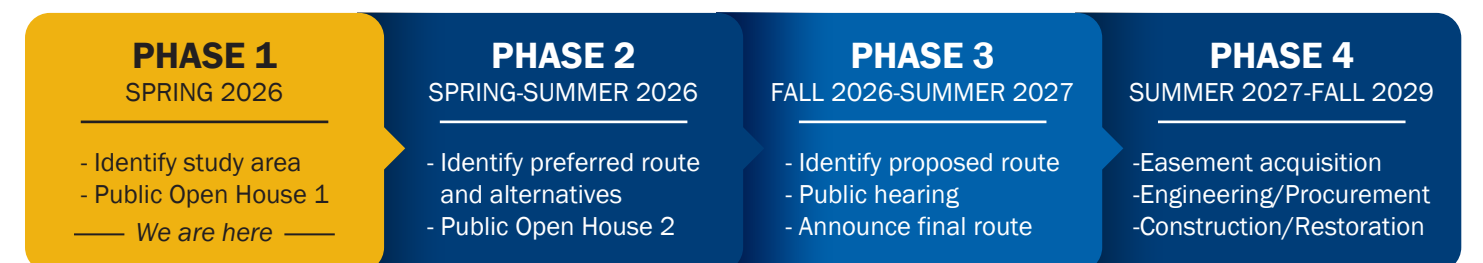
- Provides enhanced reliability and resiliency for NPPD customers
- Provides for a new transmission path in the north central Nebraska area to serve the future projected loads in the area
- Reduces congestion to support existing and future generation resources in this area
- Meets the projected reliability and economic needs identified in the Southwest Power Pool Integrated Transmission Plan
- Holt County-Antelope 345kV project is the lowest cost and most effective transmission alternative to meet the North American Electric Reliability Corporation (NERC) reliability standards in this area

Routing and Public Involvement Process

NPPD uses a thorough and comprehensive public involvement process when siting new transmission lines. Routing a line requires balancing a variety of factors – from proximity to homes, towns, and community amenities to land use, environmental concerns, and construction challenges. When planning new transmission lines, we must consider the most suitable location for the line to be built. While the shortest, most direct path might seem best, that is not always the case. Public input plays a key role in this process.

Routes for a transmission project are typically developed over the course of multiple phases and are then narrowed down to a final route.

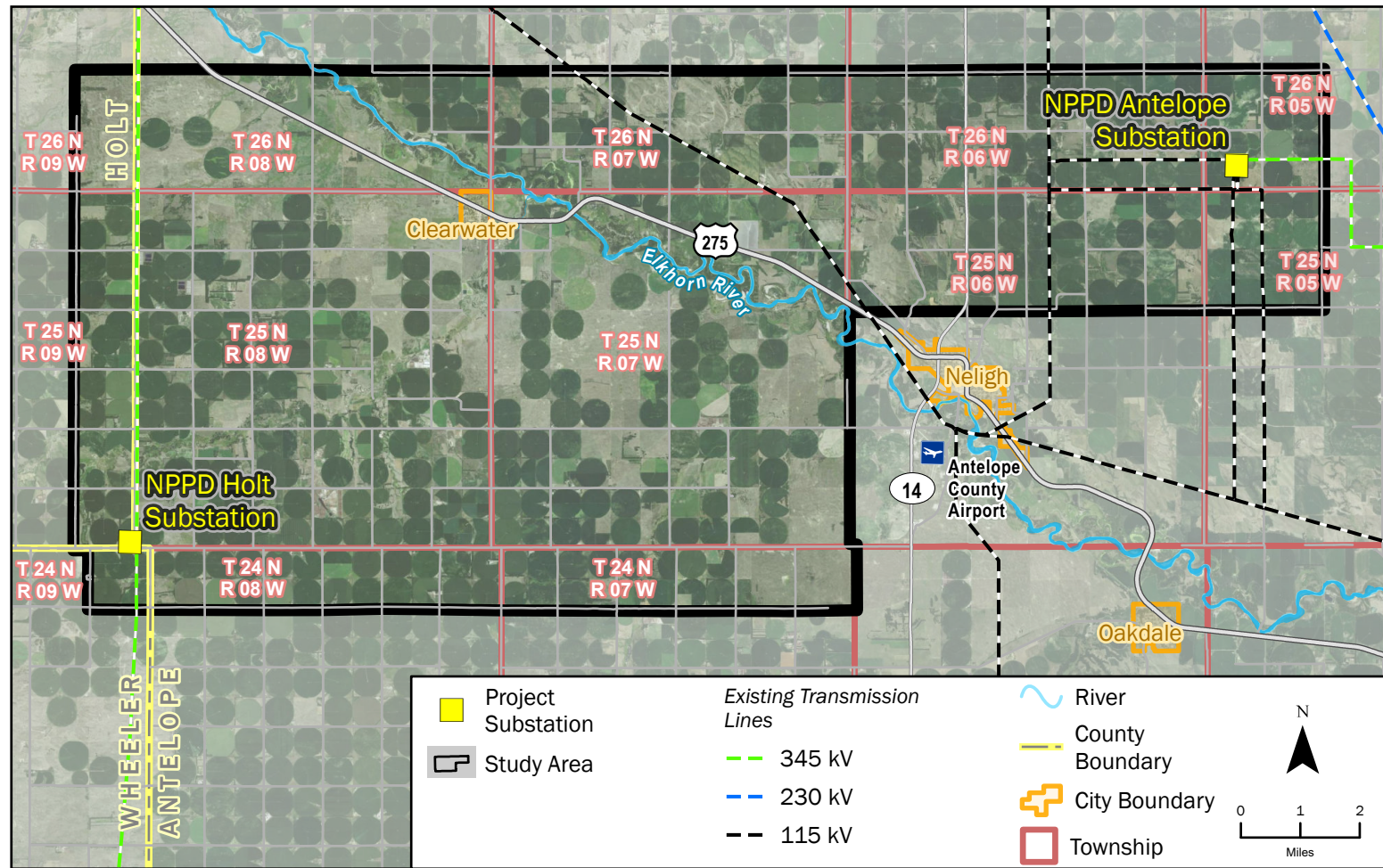
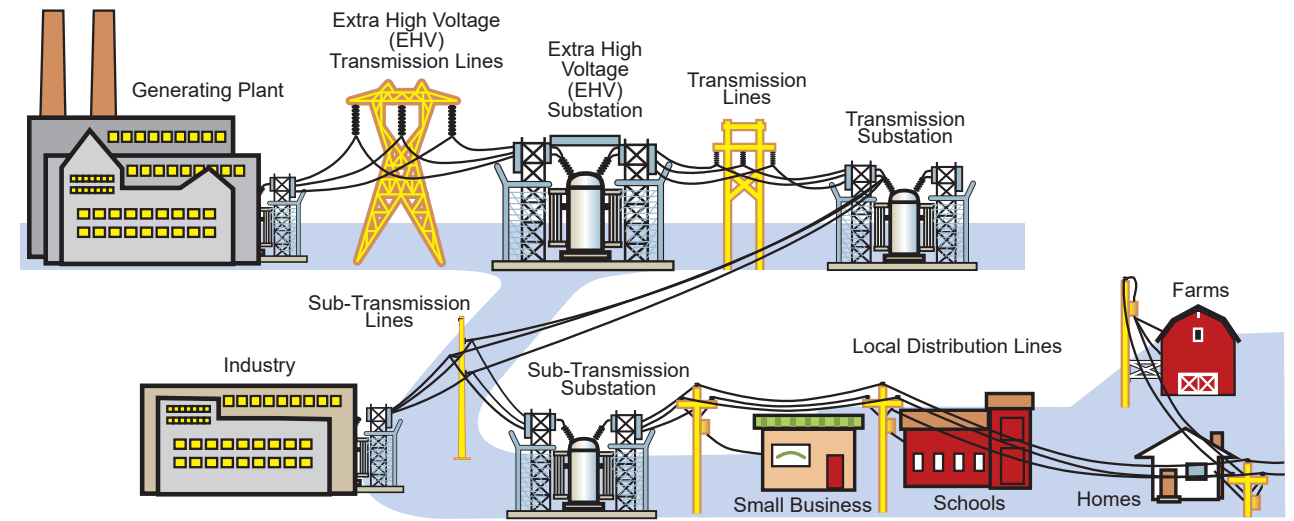
Project Process and Schedule





The Path of Electricity

From the power plant, electricity is delivered through a series of lines and substations where the voltage is reduced to the proper level for end-use customers.



Typical 345kV structure

NPPD plans to use a steel single-pole structure for this project.



Notes

Blank lined area for notes.