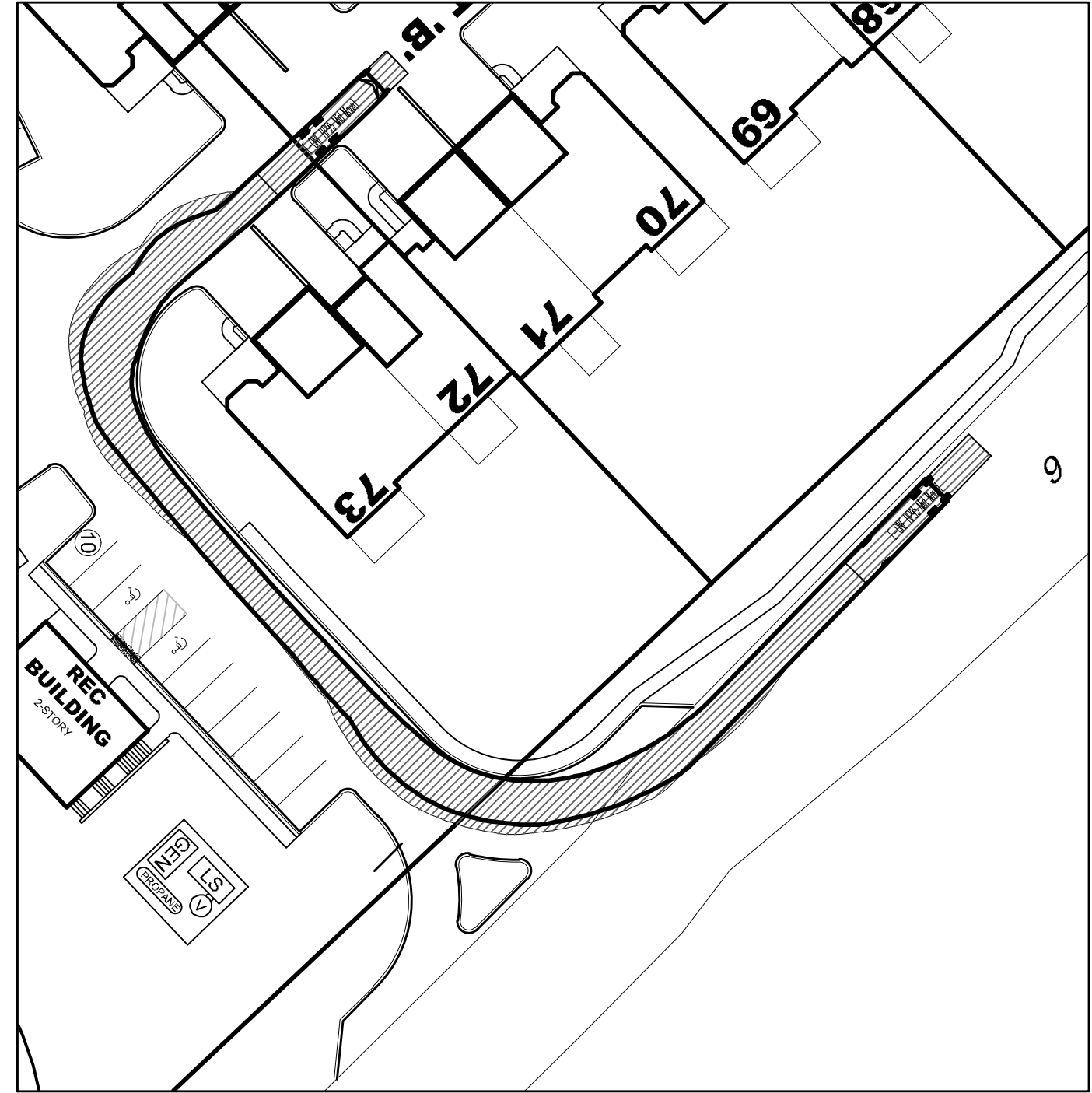
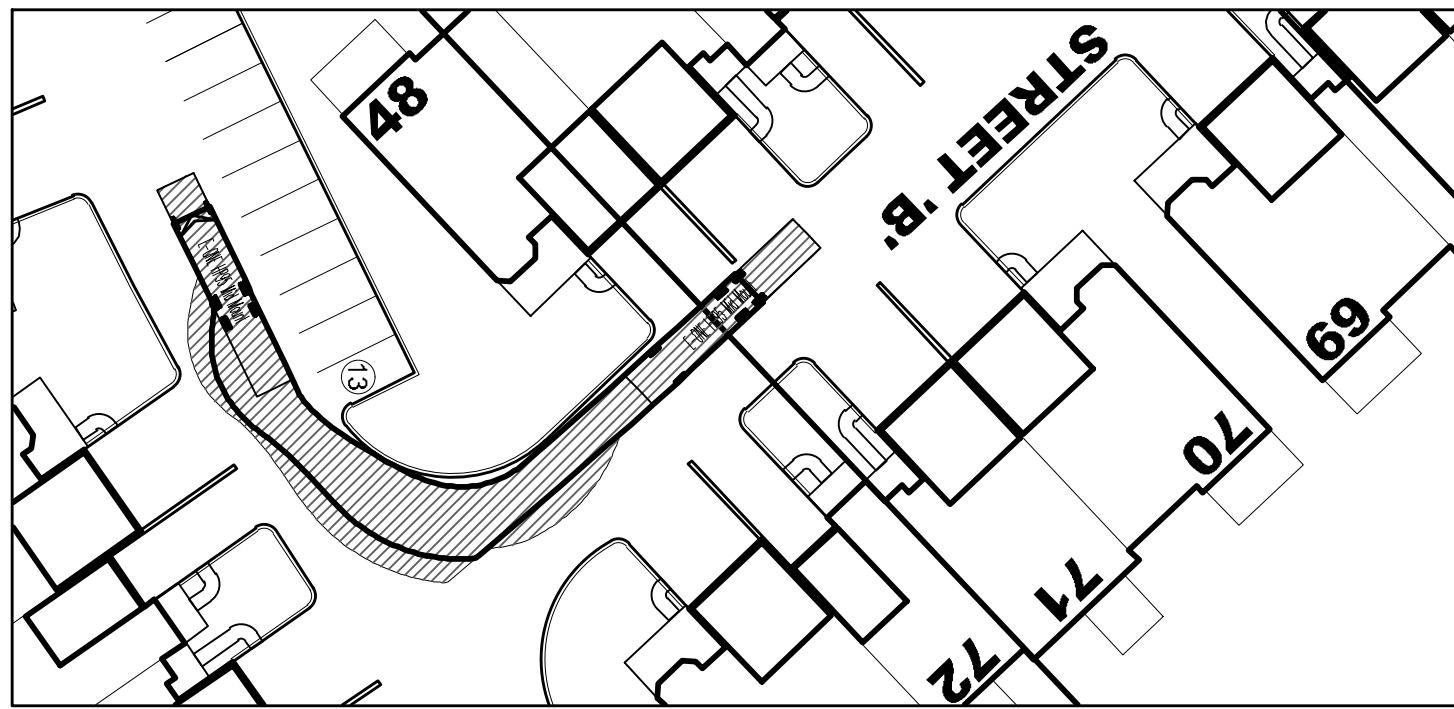




 STREET "B" CUL-DE-SAC



 ENTERING FROM ROUTE 6 & TURNING INTO STREET "B"



 EXITING STREET "B"

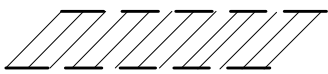
LEGEND:



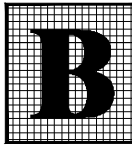
DESIGN VEHICLE OUTLINE & DIRECTION OF TRAVEL



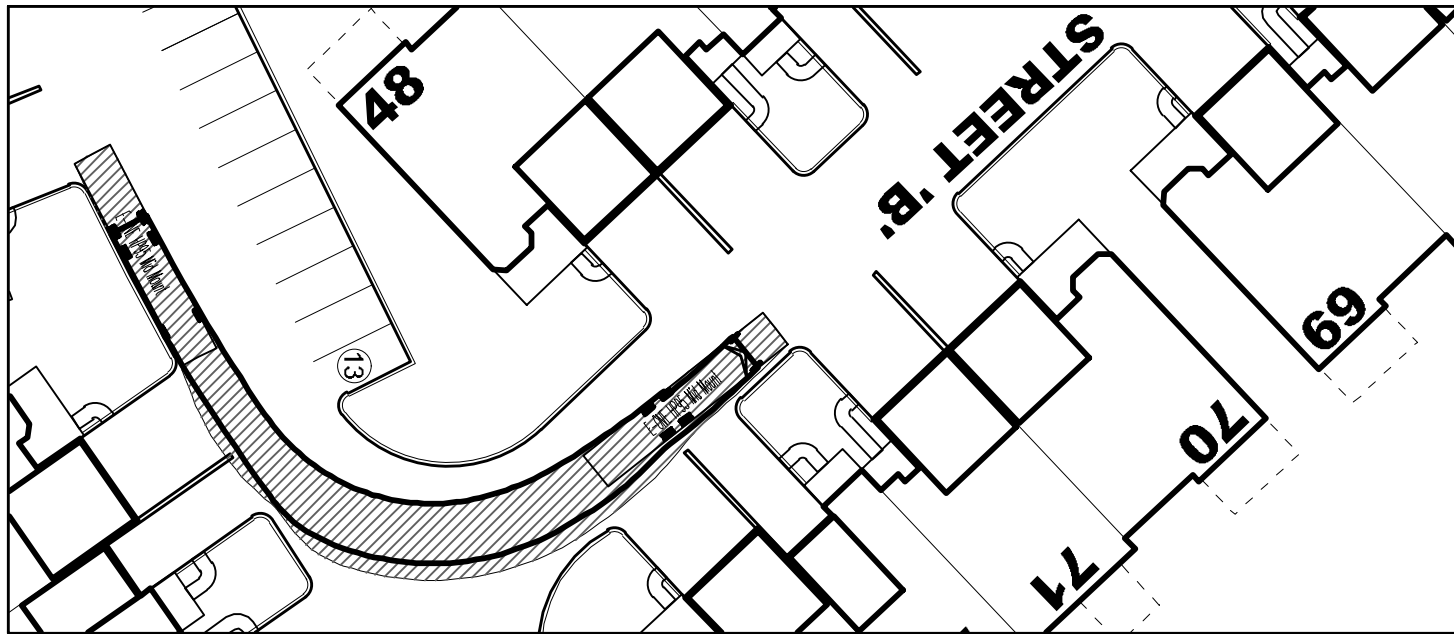
FORWARD MOVEMENT WHEEL PATH



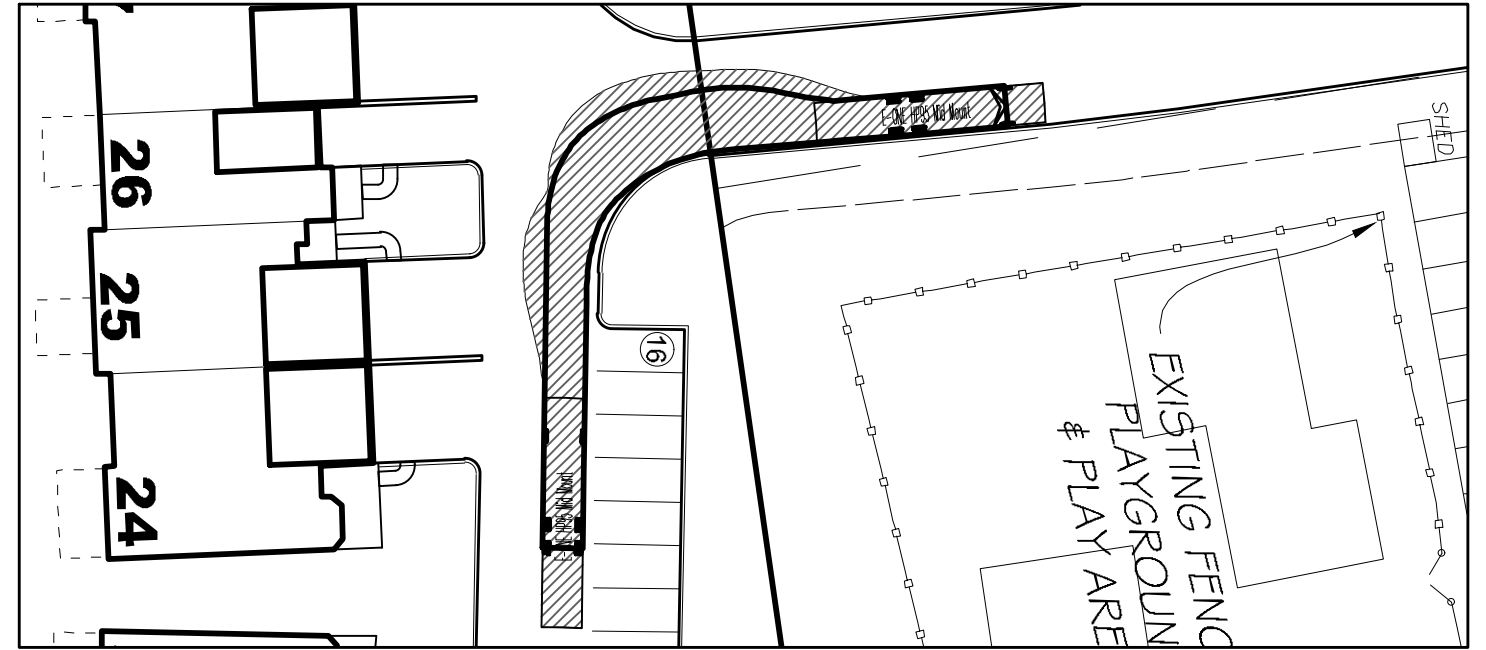
VEHICLE BODY ENVELOPE

TURNING MANEUVERS		DATE:	2-23-2026
NORTH EDGE REALTY CORP.		SCALE:	1" = 40'
ROUTE 6 TOWN OF SOMERS, WESTCHESTER COUNTY		FILE:	
 BIBBO ASSOCIATES ENGINEERING, P.C. 293 ROUTE 100 SUITE 203 SOMERS, NEW YORK 10589 TEL. 914 277 5805		DSGN / CHK:	RH / TSA
		DRN. BY:	RH
		SHT NO.	1 OF 4
		DWG NO.	TM-1

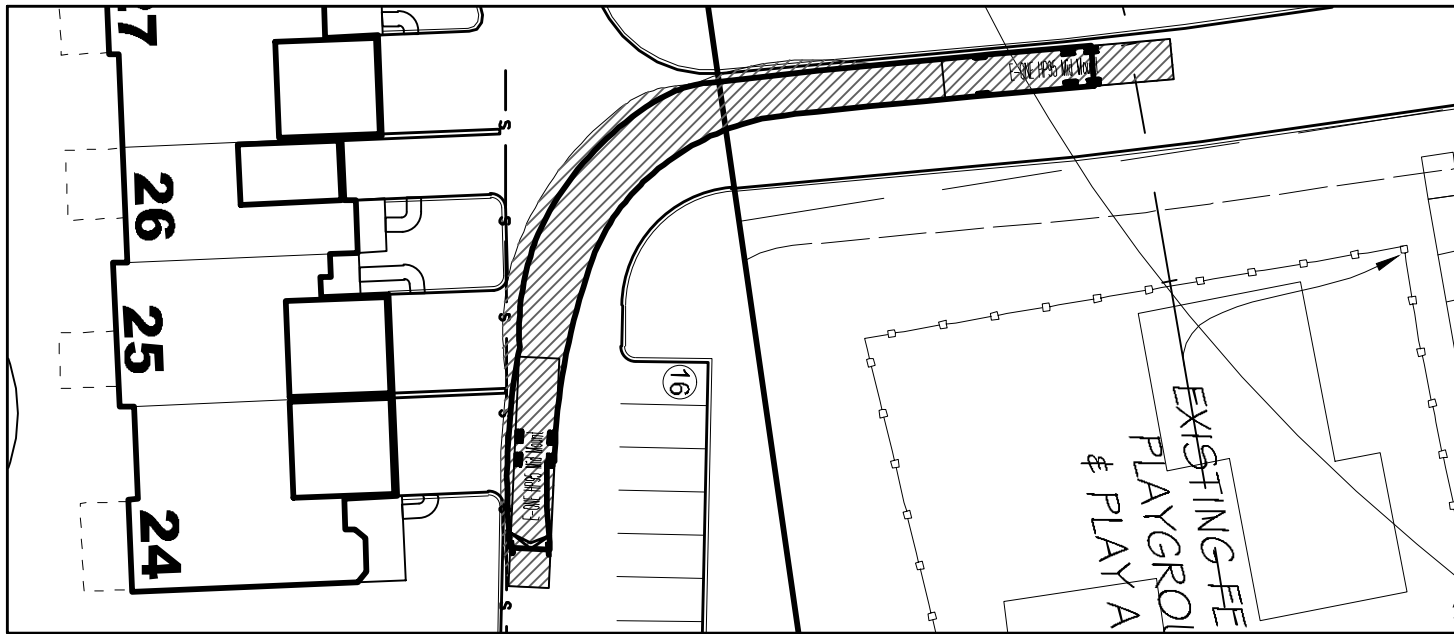
UNAUTHORIZED ALTERATIONS AND ADDITIONS TO THIS DRAWING IS A VIOLATION OF SECTION 7209 (2) OF THE NEW YORK STATE EDUCATION LAW.
COPYRIGHT © 2026 BIBBO ASSOCIATES ENGINEERING, P.C. ALL RIGHTS RESERVED. UNAUTHORIZED DUPLICATION IS A VIOLATION OF APPLICABLE LAWS.



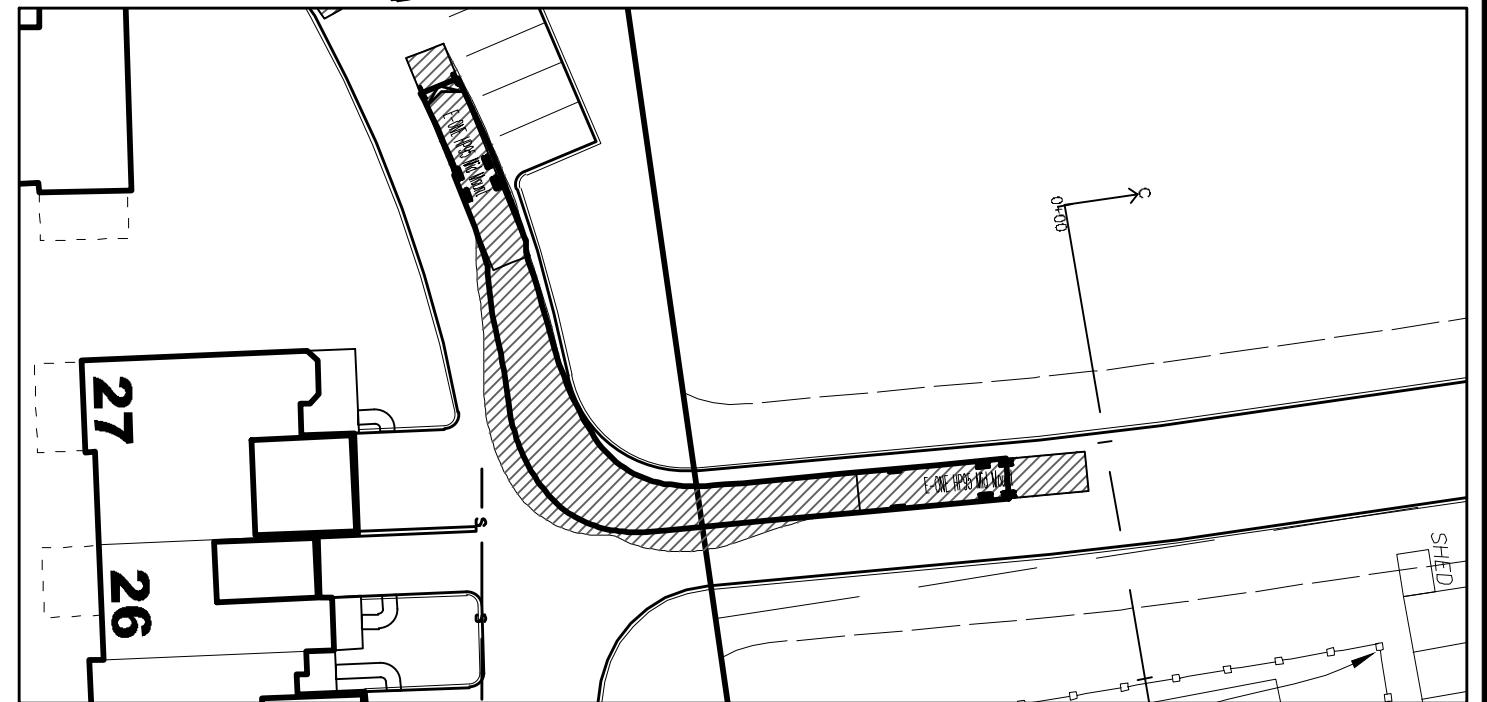
ENTERING STREET "B" FROM NORTH



EXITING STREET "A" TO STREET "C"



ENTERING STREET "A" FROM STREET "C"

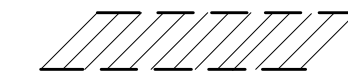


ENTERING STREET "A" FROM STREET "C" TO NORTH

LEGEND:



DESIGN VEHICLE OUTLINE & DIRECTION OF TRAVEL



VEHICLE BODY ENVELOPE

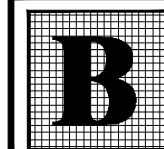


FORWARD MOVEMENT WHEEL PATH

TURNING MANEUVERS

NORTH EDGE REALTY CORP.

ROUTE 6
TOWN OF SOMERS, WESTCHESTER COUNTY



BIBBO ASSOCIATES ENGINEERING, P.C.

293 ROUTE 100 SUITE 203
SOMERS, NEW YORK 10589
TEL. 914 277 5805

DATE: 2-23-2026

SCALE: 1" = 40'

FILE:

DSGN / CHK: RH / TSA

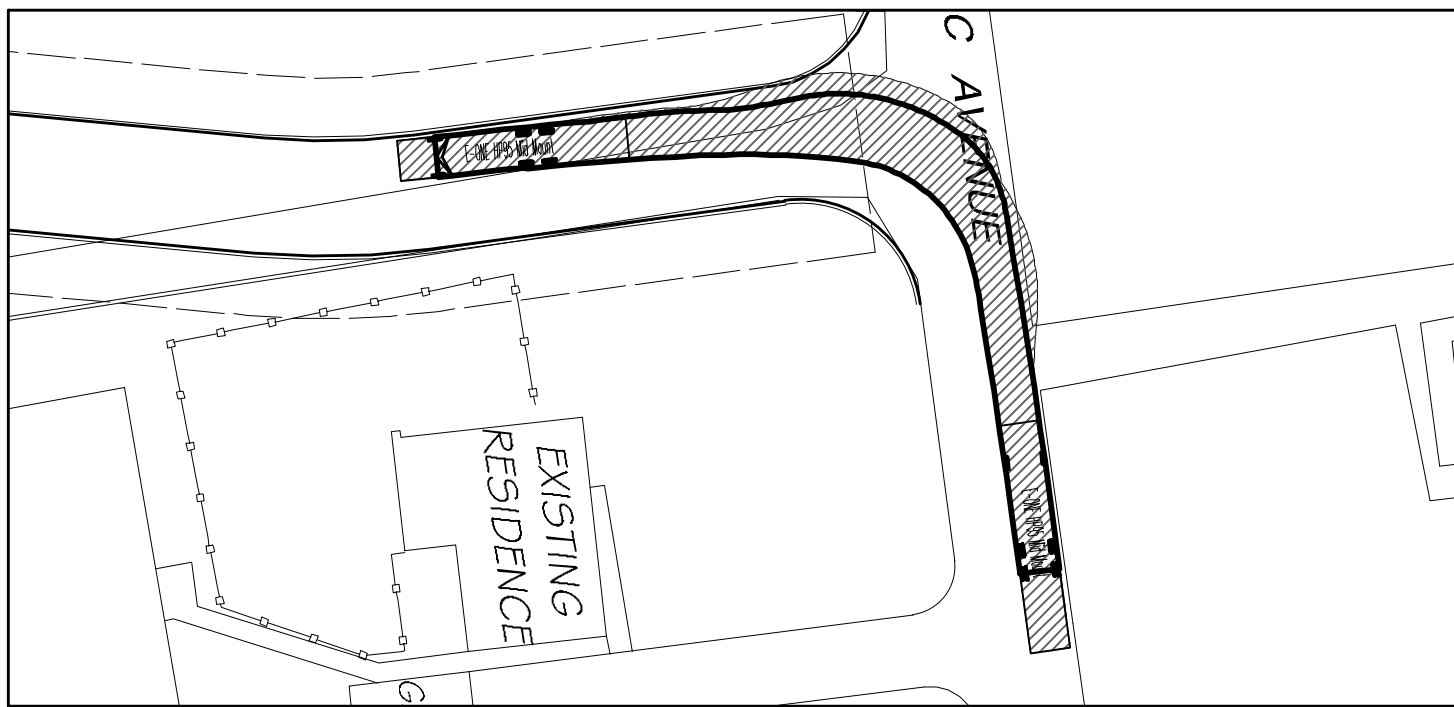
DRN. BY: RH

SHT NO. 2 OF 4

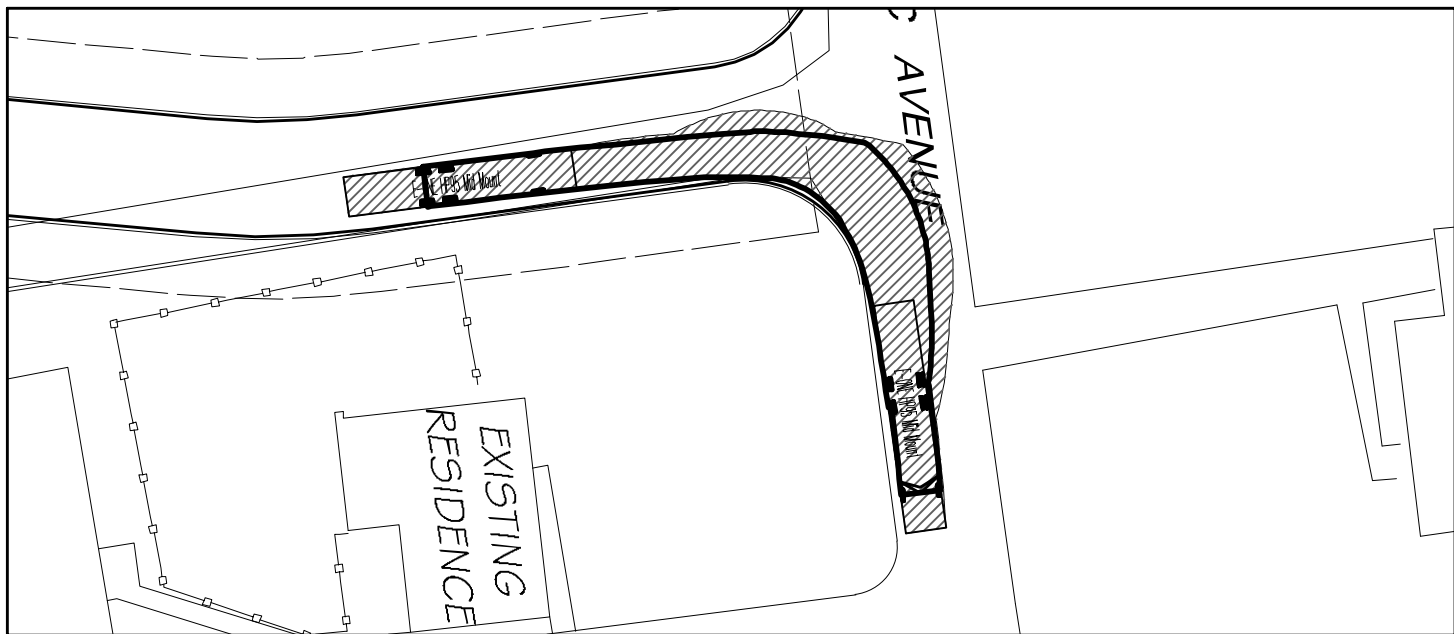
DWG NO. **TM-2**

UNAUTHORIZED ALTERATIONS AND ADDITIONS TO THIS DRAWING IS A VIOLATION OF SECTION 7209 (2) OF THE NEW YORK STATE EDUCATION LAW.

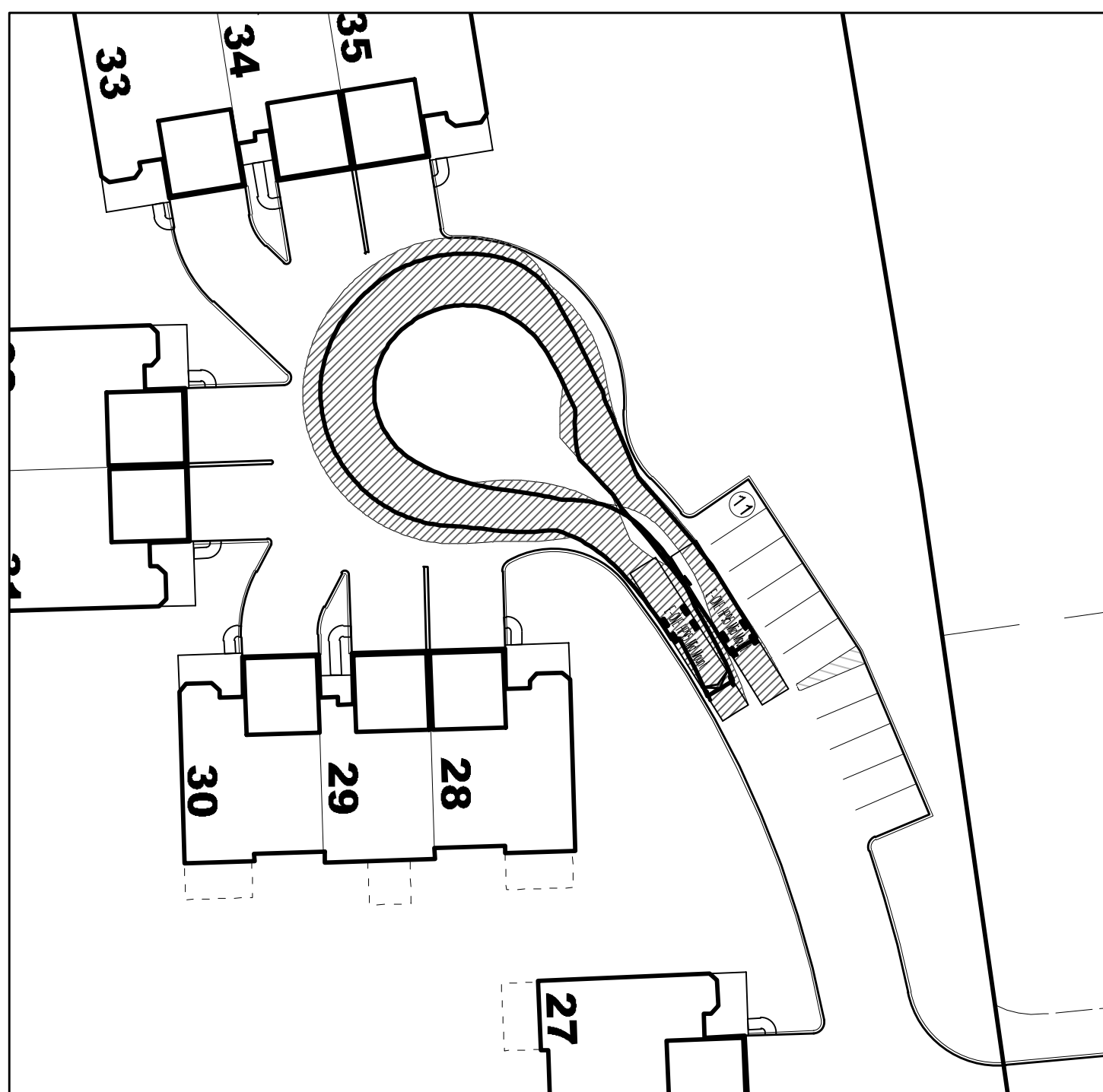
COPYRIGHT © 2026 BIBBO ASSOCIATES ENGINEERING, P.C. ALL RIGHTS RESERVED. UNAUTHORIZED DUPLICATION IS A VIOLATION OF APPLICABLE LAWS.



ENTERING STREET "C" FROM MAHOPAC AVE.



EXISTING STREET "C" TO MAHOPAC AVE.

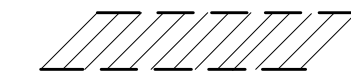


STREET "A" CUL-DE-SAC

LEGEND:



DESIGN VEHICLE OUTLINE & DIRECTION OF TRAVEL



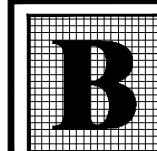
VEHICLE BODY ENVELOPE

FORWARD MOVEMENT WHEEL PATH

TURNING MANEUVERS

NORTH EDGE REALTY CORP.

ROUTE 6
TOWN OF SOMERS, WESTCHESTER COUNTY



BIBBO ASSOCIATES ENGINEERING, P.C.

293 ROUTE 100 SUITE 203
SOMERS, NEW YORK 10589
TEL. 914 277 5805

DATE: 2-23-2026

SCALE: 1" = 40'

FILE:

DSGN /
CHK: RH / TSA

DRN. BY: RH

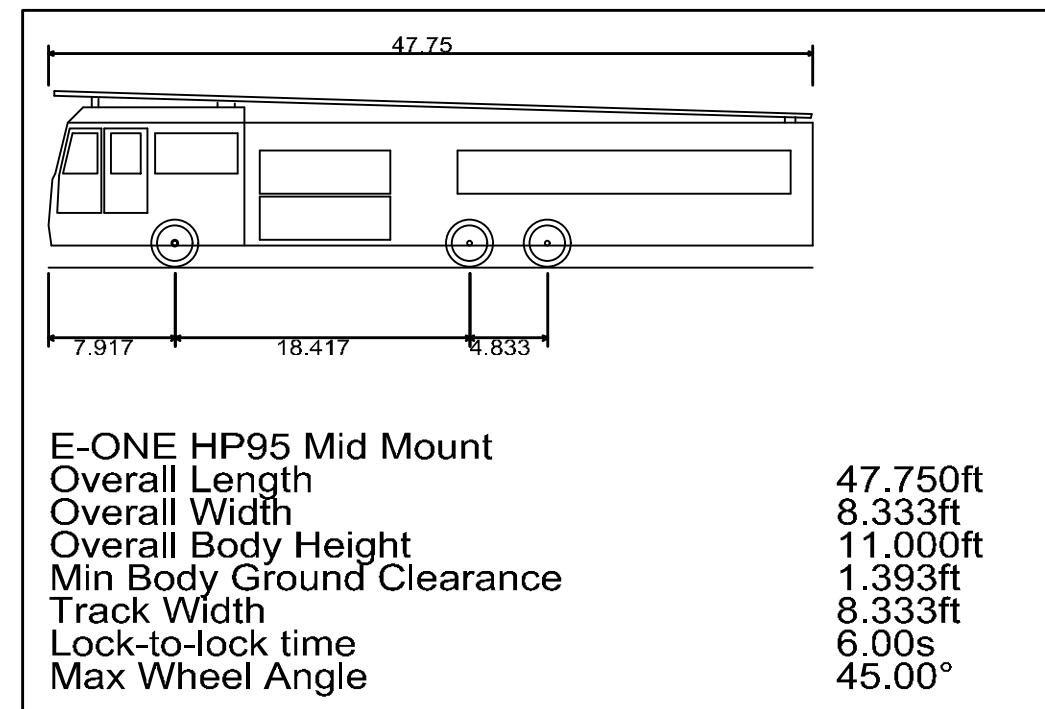
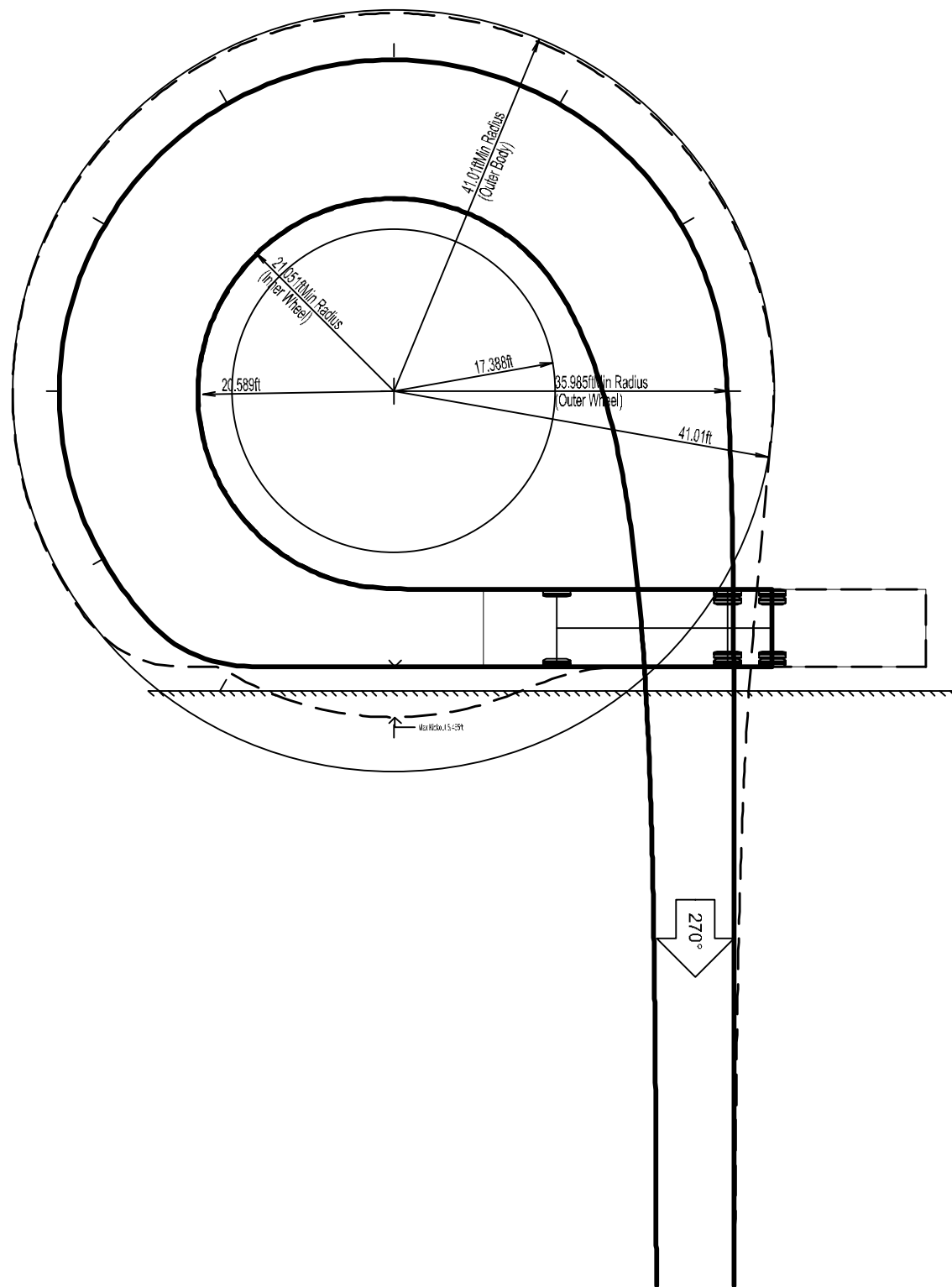
SHT NO. 3 OF 4

DWG
NO.

TM-3

UNAUTHORIZED ALTERATIONS AND ADDITIONS TO THIS DRAWING IS A VIOLATION OF SECTION 7209 (2) OF THE NEW YORK STATE EDUCATION LAW.

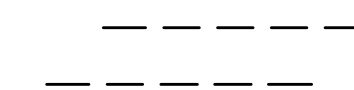
COPYRIGHT © 2026 BIBBO ASSOCIATES ENGINEERING, P.C. ALL RIGHTS RESERVED. UNAUTHORIZED DUPLICATION IS A VIOLATION OF APPLICABLE LAWS.



LEGEND:



DESIGN VEHICLE OUTLINE & DIRECTION OF TRAVEL



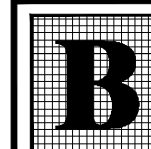
VEHICLE BODY ENVELOPE

FORWARD MOVEMENT WHEEL PATH

TURNING MANEUVERS

NORTH EDGE REALTY CORP.

ROUTE 6
TOWN OF SOMERS, WESTCHESTER COUNTY



BIBBO ASSOCIATES ENGINEERING, P.C.

293 ROUTE 100 SUITE 203
SOMERS, NEW YORK 10589
TEL. 914 277 5805

DATE: 2-23-2026

SCALE:

FILE:

DSGN /
CHK: RH / TSA

DRN. BY: RH

SHT NO. 4 OF 4

DWG
NO.

TM-4

UNAUTHORIZED ALTERATIONS AND ADDITIONS TO THIS DRAWING IS A VIOLATION OF SECTION 7209 (2) OF THE NEW YORK STATE EDUCATION LAW.

COPYRIGHT © 2026 BIBBO ASSOCIATES ENGINEERING, P.C. ALL RIGHTS RESERVED. UNAUTHORIZED DUPLICATION IS A VIOLATION OF APPLICABLE LAWS.