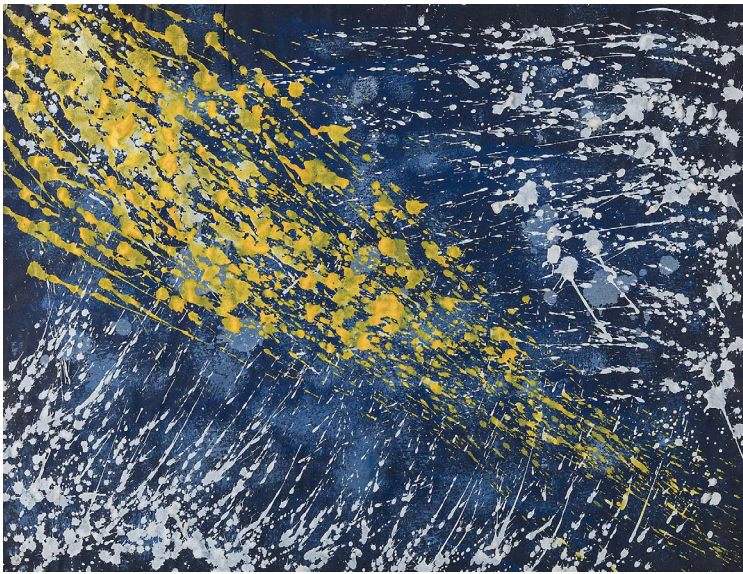


InformELLEs:

Women Artists and Art Informel in the 1950s/60s



1



3



2

AUGUST 31, 2025 – JANUARY 11, 2026

PRESS PREVIEW: THURSDAY, AUGUST 28, 2025, 11 AM

OPENING: SUNDAY, AUGUST 31, 2025, 11 AM

From August 31, 2025 to January 11, 2026, the Emil Schumacher Museum honours female artists of the Art Informel during the 1950s and 60s with an extensive special exhibition.

As a long overdue show in the only museum dedicated to an Informal artist in the entire German-speaking world, the exhibition takes a new look at "Art Informel" and presents female artists who played a key role in shaping this abstract movement. Around 80 outstanding works by 14 painters and 2 sculptors are on display—aiming to expand the art-historical canon with the long overlooked positions of female artists.

Art Informel developed—parallel to Abstract Expressionism in the USA—to become the predominant art movement in Europe after the Second World War. Abandoning classic principles of form and design, the open creative process was at the heart of the works. There are real discoveries to be made among the exhibited pieces, such as the early work of Sarah Schumann, who also championed feminist art historiography as curator of the pioneering exhibition “*Künstlerinnen International 1877–1977*”.

With Maria Helena Vieira da Silva, one of the most important female painters of the 20th century, one of very few documenta artists active from the very beginning is also represented. Roswitha Lüder is the last living representative of the group. On the occasion of her 90th birthday on August 19 this year, the Emil Schumacher Museum is dedicating a special presentation to her within the exhibition. Her print cycles on the Gilgamesh epic and the figure of Salome from the 1950s will be shown in cabinets. In addition, the actresses Johanna Polley (*1992) and Camilla Pölzer (*1994) will perform Oscar Wilde’s “*Salome*” between feminist interpretation and patriarchal narrative tradition in a performative theatre evening in the middle of the exhibition.

With works by Mary Bauermeister, Chow Chung-cheng, Helen Dahm, Natalia Dumitresco, Juana Francés, Sigrid Kopfermann, Maria Lassnig, Roswitha Lüder, Brigitte Meier-Denninghoff, Judit Reigl, Marie-Louise von Rogister, Christa von Schnitzler, Sarah Schumann, Soshana, Hedwig Thun and Maria Helena Vieira da Silva.

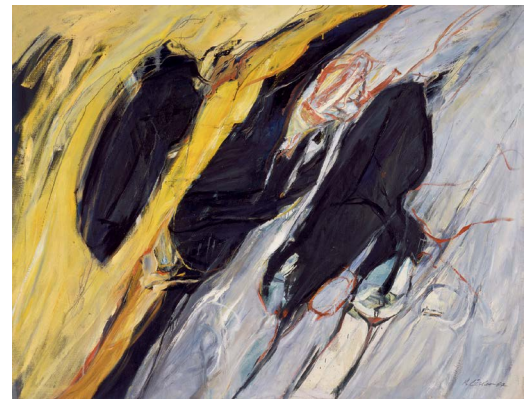
The exhibition is a cooperation between Hessen Kassel Heritage, the Kunsthalle Schweinfurt and the Emil Schumacher Museum, in collaboration with the Research Centre for Informal Art at the Institute of Art History at the University of Bonn. Curators: Ulrich Etscheid, Dorothee Gerkens, Roland Knieg and Rouven Lotz (for Hagen).

The exhibition is made possible by the generous support of the Ministry of Culture and Science of the State of North Rhine-Westphalia and the Ernst von Siemens Art Foundation.

To accompany the exhibition, a bilingual catalogue (German/English) has been published by Deutscher Kunstverlag as part of the publication series of the Research Centre for Informal Art at the Institute of Art History at the University of Bonn. In addition to taking a concrete look at the work of the 16 artists presented, it traces the fundamental mechanisms of the art world and deals with sociological questions relating to networks, exhibition participation and reception. With contributions by Andrea Brandl, Markus A. Castor, Ulrich Etscheid, Dorothee Gerkens, Anne-Kathrin Hinz, Rouven Lotz, Carola Muysers, Christoph Zuschlag and many more.



4



5

1. **Mary Bauermeister**, *Untitled*, 1959, casein tempera, gouache on paper, 49 x 61 cm, Mary Bauermeister Art Estate © VG Bild-Kunst, Bonn 2025, photo: Margot Gottschling
2. **Judit Reigl**, *Centre de dominance*, 1959, oil on canvas, 156,5 x 179 cm, private collection, Paris © VG Bild-Kunst, Bonn 2025, photo: Galerie Dina Vierny, Paris
3. **Helen Dahm**, *Raumgitter auf Blau*, 1958, mixed media on canvas, 100 x 75 cm, Hessen Kassel Heritage, Neue Galerie © Helen Dahm-Gesellschaft, Oetwil am See, photo: Thomas Gerber, Burgdorf
4. **Maria Helena Vieira da Silva**, *Le vent*, 1953, oil on canvas, 81 x 100 cm, MKM Museum Küppersmühle für Moderne Kunst, Duisburg, Collection Ströher © VG Bild-Kunst, Bonn 2025, photo: Henning Krause, Cologne
5. **Roswitha Lüder**, *Fließende Figuration*, 1967, oil on canvas, 120 x 150 cm, courtesy of the artist © VG Bild-Kunst, Bonn 2025, photo: Emil Schumacher Museum, Hagen, Joachim Schwingel

EMIL SCHUMACHER MUSEUM
Museumsplatz 1
58095 Hagen

www.esmh.de
www.emil-fuer-alle.de
Instagram: [@emilschumachermuseum](https://www.instagram.com/emilschumachermuseum)

OPENING HOURS

Tue–Sun 12pm–6pm
Closed on Mondays

PRESS CONTACT

ARTPRESS – Ute Weingarten
weingarten.artpress@uteweingarten.de
+ 49 (0) 30 48 49 63 50

ARTPRESS
UTE WEINGARTEN