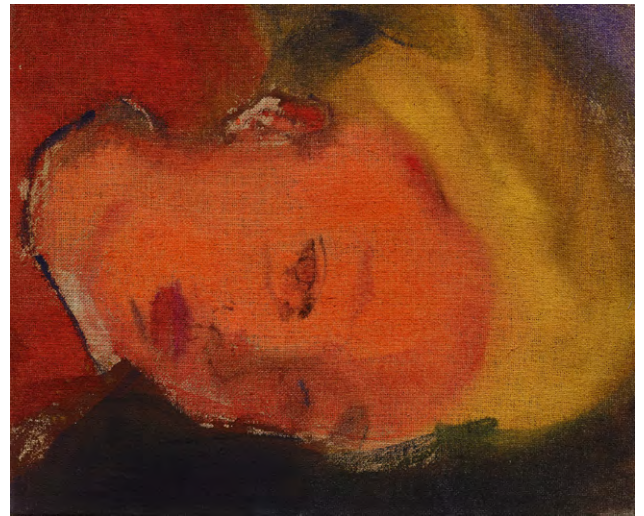




1



2



3

WHERE ARE WE NOW

Highlights of the Miettinen Collection at the Philara Collection, Düsseldorf

29 JUNE - 21 SEPTEMBER 2025

PRESS PREVIEW WITH EXHIBITION TOUR: FRIDAY, 27 JUNE 2025, 11 AM

OPENING: 29 JUNE 2025, 2 PM - 6 PM

EVENTS 2025 - MIETTINEN COLLECTION

Highlights of the Philara Collection at the Miettinen Collection, Berlin | Curated by Julika Bosch & Hannah Niemeier

In anderen Händen | 25 April - 27 July 2025, Opening: 24 April 2025, 6 pm - 9 pm

Presentation of the Miettinen Collection at Schloss Sacrow, Potsdam | Curated by Michael M. Thoss

Exit Paradise - The Miettinen Collection in Sacrow | 11 July - 28 September 2025

Miettinen Collection at the Kunsthalle Helsinki, Finland | Curated by Florian Peters-Messer & Linda Peitz

1 November 2025 - 11 January 2026, Opening: 31 October 2025

The *WHERE ARE WE NOW* exhibition at the Philara Collection in Düsseldorf provides a unique overview of the Miettinen Collection, presented here for the first time in such a comprehensive form. The show, which has taken over all the exhibition spaces at the Philara Collection and features around 150 works by more than 80 artists, opens in the spacious entrance hall with one of Collection's core themes, landscape and nature. This thematic strand highlights the origins of the collection, founded by Timo Miettinen and his mother with a strong focus on Finnish landscape painting of the 19th and 20th centuries. Since 2004, Timo Miettinen has deliberately expanded the collection to include works of international contemporary art, which are a central focus of the exhibition. The works on view span a period from the 1980s to the present day, offering a broadly based insight into the multilayered complexity of the collection.

The collection has a significant focus on Finnish contemporary art, which often attracts little attention in an international context. This exhibition provides an outstanding platform for Finnish contemporary artists, including **Elina Brotherus**, **Ola Kolehmainen** and **Tommi Toija**. Elina Brotherus, who works mainly with photography, interrogates the boundaries between self-portrait, landscape and representation. Her images often explore personal narratives and link autobiographical elements with art-historical references. In contrast, Ola Kolehmainen explores architectural structures and their reflections, creating large-scale photographic abstractions of monochromatic worlds. His works are characterised by a meditative, almost minimalist visual language. Tommi Toija is known for his expressive, often grotesquely exaggerated sculptures, which use a blend of melancholy and humour to engage with existential themes such as vulnerability and loneliness. His figures have a childlike appearance but nevertheless also convey intrinsic, profoundly emotional and socially critical dimensions.

The exhibition is configured as a dynamic conversation between monographic spaces and areas with a thematic structure. Artists whose work is of particular importance for the collection, including **Leiko Ikemura**, **Secundino Hernández**, **Rainer Fetting**, **Kirsi Mikkola**, **Georg Baselitz** and **Tom of Finland**, have their own dedicated rooms. Secundino Hernández has been supported by Miettinen since early in his career, and the collection has one of the world's most comprehensive bodies of his work. Among Hernández's works featured in the exhibition is his cycle *Lupis Ipsum* (2013), representing the 12 Apostles and Jesus Christ, an abstracted, gesturally charged reinterpretation of religious iconography, based on works by El Greco in Toledo. Leiko Ikemura, another artist important to the collection, has designed her own space for the exhibition, where the juxtapositions of her paintings and sculptures create an atmospheric relationship of tension between dream and reality. Her works oscillate between figuration and abstraction and address existential themes of identity, nature and transience.

Alongside the monographic spaces, thematic areas distil the core strands of the collection and create atmospheric dialogues between differing forms of artistic expression. The bandwidth extends across constructivist art, abstract painting, portraiture, queer and political art, to design, fashion, and floral subject matter. The curatorial structure of the exhibition allows visitors to appreciate the collector's diverse areas of interest, and to arrange the works to reveal unexpected new connections. It thus becomes possible to experience the extraordinary diversity of the Miettinen Collection, and the visionary outlook of a collector who has developed in-depth expertise in each of these artistic movements.

With works by:

Etel Adnan
Joachim Bandau
Georg Baselitz
Amoako Bofo
Louise Bourgeois
Elina Brotherus
Miriam Cahn
Sarah Cunningham
Tracey Emin
Rainer Fetting
Tom of Finland
Oska Gutheil
Secundino Hernández
Leiko Ikemura
Justyna Janetzek
Eemil Karila
Kirsi Mikkola
Lars-Gunnar Nordström
Francis Picabia
Janne Räisänen
Aurora Reinhard
Julian Schnabel
Emanuel Seitz
Barthélémy Toguo
Tommi Toija
Lee Ufan
Stanley Whitney
etc.



The Miettinen Collection – a platform for promoting Finnish contemporary art

Timo Miettinen has maintained close links with Germany for decades – not least through his business activities in a company in the Sauerland, where his eldest daughter was also born, as well as his long-term residence in southern Germany. Around 15 years ago, these deeply rooted connections logically led to the acquisition of a Wilhelmine-period house on Marburger Straße, in Charlottenburg, Berlin, where Miettinen's early collecting activities developed into an institution, in the form of Salon Dahlmann, named after the former owner of the house. For 10 years now, this has been a venue for regular exhibitions from his own collection, others in cooperation with other collections, and thematic presentations complemented by readings and concerts. While the collection initially concentrated mainly on Finnish contemporary art, the focus rapidly expanded to include important German and international works. The Miettinen Collection continues to foster and develop the tradition of salon culture.

Miettinen sees himself as a committed promoter of Finnish art abroad and has raised its profile considerably, particularly in Germany. At the same time, he uses his extensive networks to establish German and international artists in his native Finland and beyond. His activities as a patron of the arts are reflected in numerous exhibitions in Helsinki, Paris, Spain, as well as at the Weserburg Museum in Bremen, always with the aim of fostering cultural exchange and facilitating new dialogues. The Berlin Salon, which is open to the public, acts as a platform where emerging young artists, in particular, are brought together with established artists to engage in dynamic exchange.



6



7



8

In dialogue with the Philara Collection and the Rhineland

This spirit of intercultural dialogue also brought about collaboration with the Philara Collection in Düsseldorf. The *WHERE ARE WE NOW* exhibition provides a comprehensive survey of the breadth of Miettinen's collecting activities, ranging from Finnish contemporary art to the work of renowned German and international artists. This is the first extensive presentation by the Miettinen Collection in the Rhineland and gives visitors the opportunity to discover many artists on show for the first time in the region. This exhibition thus makes a valuable contribution to the multifaceted cultural environment of the Rhineland, with its distinctive art collecting scene.

From April 2025, the Philara Collection, one of the most important contemporary art institutions in the Rhineland, will present selected works from its holdings at the Miettinen Collection in Berlin, in an exhibition entitled *In anderen Händen*. Gil Bronner, the founder of this collection, takes a similar approach to Timo Miettinen, in that the private museum he established in Düsseldorf has for years been a dynamic space for contemporary art. This collaboration brings together two collectors who focus on different areas, but who nevertheless share a common vision in their commitment to emerging young talent in combination with established international artists.

Curators of the exhibition: Linda Peitz, Florian Peters-Messer

CREDITS

1. **André Butzer**, *Hölderlin*, 2011, oil on canvas, 175 x 130 cm © the artist Courtesy Miettinen Collection
2. **Secundino Hernández**, *Lupis Ipsum #1*, 2013, gouache, acrylic, resin, oil on canvas, 130 x 90 cm © the artist Courtesy Miettinen Collection
3. **Leiko Ikemura**, *Reclining Face Orange*, 2008, tempera on linen, 50 x 60 cm © the artist Courtesy Miettinen Collection
4. **Alexander Basil**, *untitled*, 2023, oil on canvas, 180 x 180 cm © the artist Courtesy Miettinen Collection
5. **Jesse Wine**, *I think you ought to know, I'm going through a creative stage some people find difficult to connect to*, 2016, ceramic, glazed © the artist Courtesy Miettinen Collection
6. **Amoako Boafo**, *Steve Mekoudja*, 2019, oil on canvas, 200 x 160 cm © the artist Courtesy Miettinen Collection
7. **Elina Brotherus**, *Nudo Florentino*, 2019, 80 x 53 cm © the artist Courtesy Miettinen Collection
8. **Miriam Cahn**, *Held*, 2002-2003, oil on canvas, 110 x 93 cm © the artist Courtesy Miettinen Collection
9. **Brandon Lipchik**, *Gardener*, 2019, acrylic on canvas, 75 x 60 cm © the artist Courtesy Miettinen Collection
10. **Oska Gutheil**, *Portrait Timo Miettinen*, 2019, oil on canvas, 180 x 150 cm © the artist Courtesy Miettinen Collection

PRESS AND PUBLIC RELATIONS

ARTPRESS - Ute Weingarten

weingarten.artpress@uteweingarten.de

+49 (0) 30 48 49 63 50

Danziger Str. 2 | 10435 Berlin

ARTPRESS
UTE WEINGARTEN

Sammlung Philara

Birkenstraße 47 a | 40233 Düsseldorf

presse@philara.de

+49 (0) 170 7635785

www.philara.de

SAMMLUNG

Philara

