

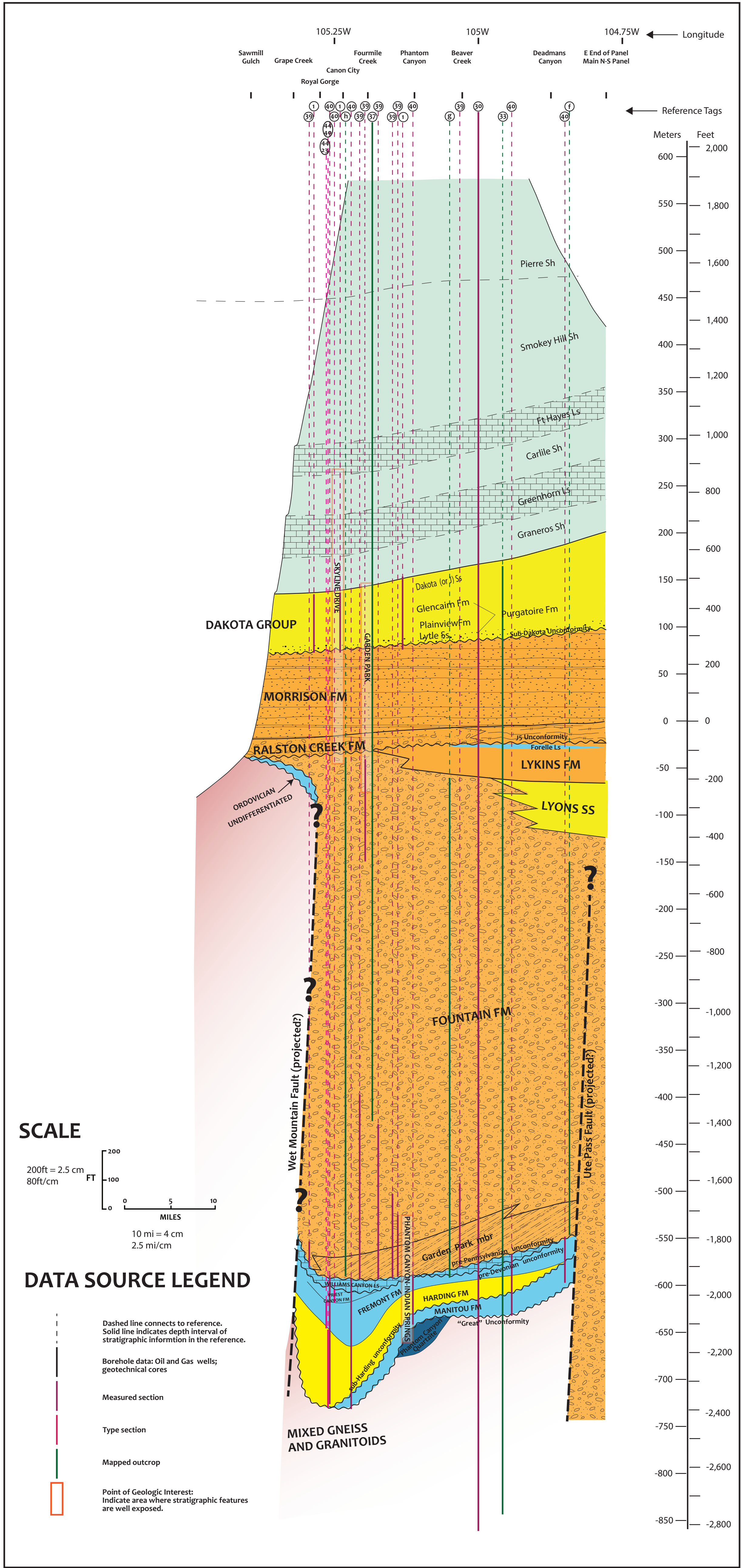
K-Pg Laramide

K Sevier

P-P Ancestral Rocky Mountains

Ordovician

Royal Gorge Panel

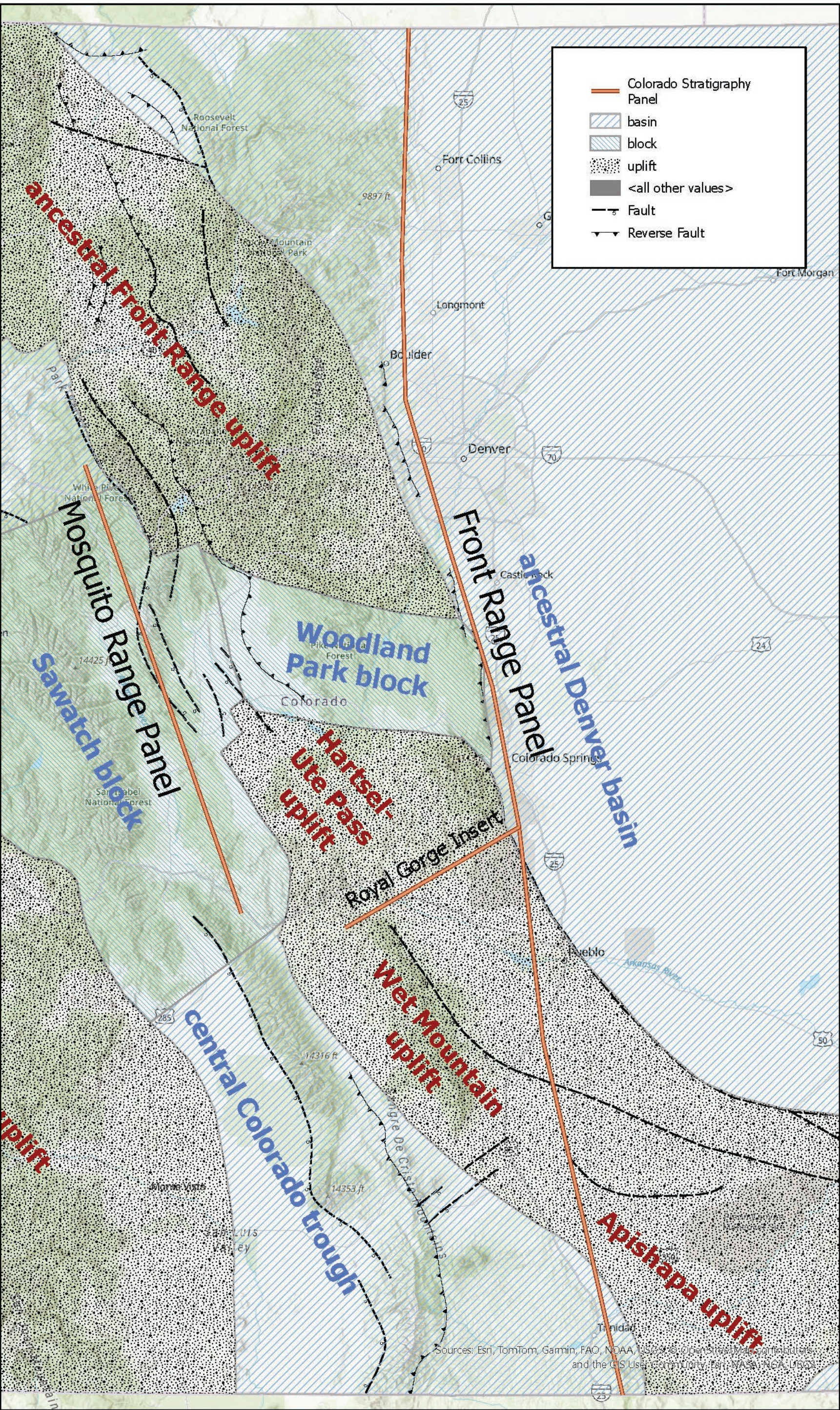


Apishapa - Wet Mountains Uplift	Canyon City Embayment	Apishapa - Ute Pass Uplift	Denver Basin
---------------------------------	-----------------------	----------------------------	--------------

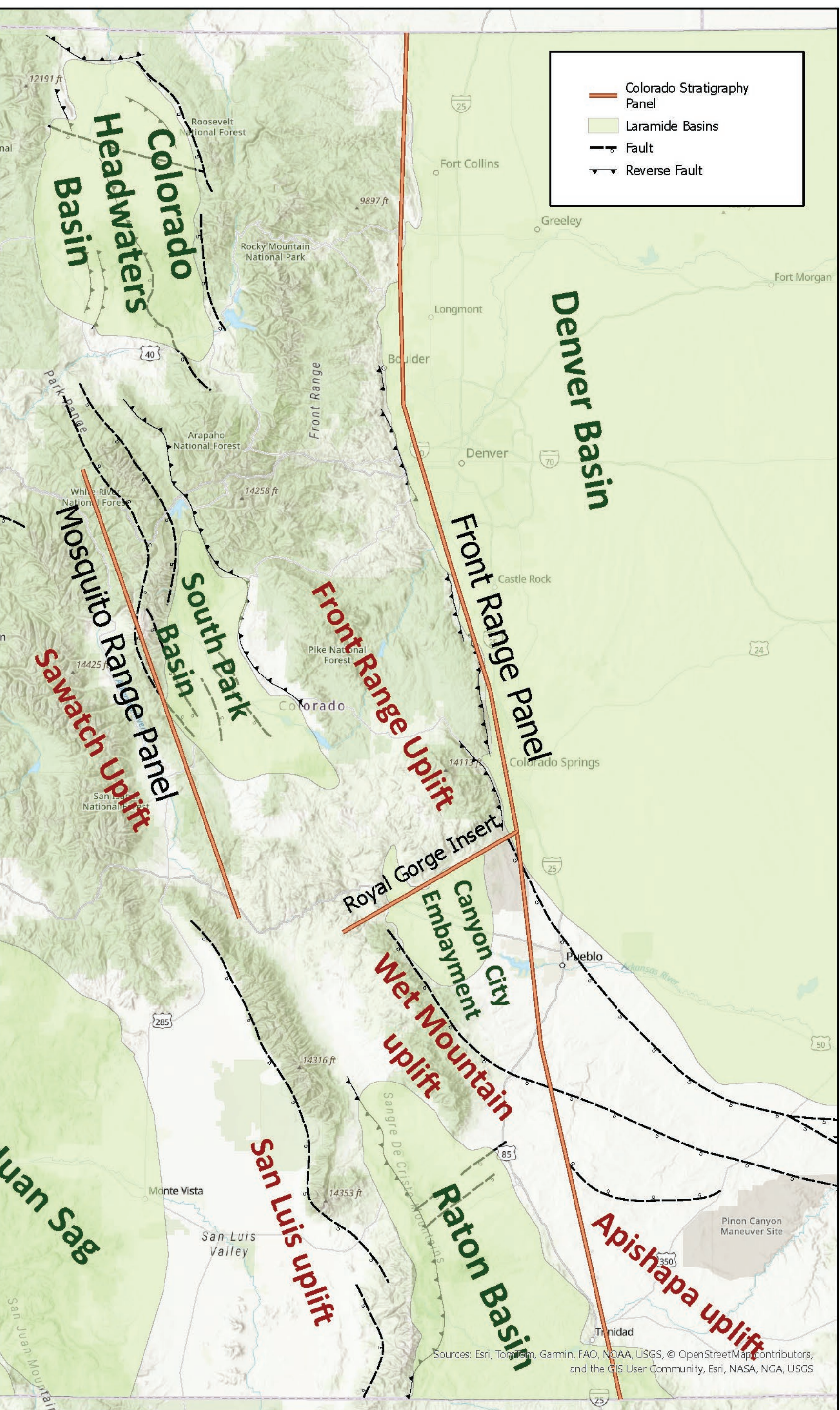
Western Interior Seaway			
-------------------------	--	--	--

Apishapa - Wet Mountains Uplift	Canyon City Embayment	Apishapa - Ute Pass Uplift	Ancestral Denver Basin
---------------------------------	-----------------------	----------------------------	------------------------

Rossodus Uplift			
-----------------	--	--	--



Main Pennsylvanian ancestral Rocky Mountain orogeny structural features



Main Paleogene Laramide orogeny structural features

1 Altschuld, K.R., 1980, Stratigraphy and Depositional Environments of the Dakota Group, Canon City Area, Colorado: MS Thesis, Colorado School of Mines, Golden Co, 180 p.

2 Brunner, A.E., Baldwin, H.L., Jr., and Keyte, I.A., 1933, Pre-Pennsylvanian stratigraphy of Front Range in Colorado: American Association of Petroleum Geologists Bulletin, v. 17, no. 4, p. 375-396.

3 Chronic, John, 1957a, No. 1 Owl Creek Measured Section: in McKee, E.D., Colorado Measured Sections, Rocky Mountain Association of Geologists, p. 9-14.

4 Chronic, John, 1957b, No. 2 Boulder Measured Section: in McKee, E.D., Colorado Measured Sections, Rocky Mountain Association of Geologists, p. 15-22.

5 Clark, W.R., 1977, Across the Raton Basin, Colorado No. 18; in Irwin, D. Subsurface Cross Sections of Colorado: Rocky Mountain Association of Geologists Special Publication No. 2, 69 pp.

6 Cobban, W.A., and Scott, G.R., 1972, Stratigraphy and ammonite fauna of the Graneros Shale and Greenhorn Limestone near Pueblo, Colorado, U. S. Geol. Survey Professional Paper 645, at <https://doi.org/10.3133/pp645>.

7 COGIS, 2018, Colorado Energy and Carbon Management Commission (ECMC) data website <https://www.colorado.gov/gov-map-reports/cogis-clubhouse/cogis-facility-inquiry>, accessed 5/17/2018.

8 Condra, G.E., Reed, E.C., and Scherer, O.J., 1940, Correlation of the formations of the Laramie Range, Hartsville uplift, Black Hills, and western Nebraska: Nebraska Geological Survey Bulletin, v. 13, p. 52.

9 Cross, W., 1984, Description of the Pikes Peak quadrangle, Colorado: U. S. Geol. Survey Geol. Atlas Folio 7.

10 Femmema, N.M., 1905, Geology of the Boulder district, Colorado: U. S. Geol. Survey Bulletin 265, scale 1:63,360.

11 Finlay, G.I., 1907, The Glen Eyrie formation and its bearing on the age of the Fountain formation in the Manitou region: Colorado: Journal of Geology, v. 15, no. 6, p. 586-589.

12 Friskh, C.I., and Kirkham, R.M., 2008, Preliminary Geologic Map of the Culebra Peak Area, Sangre de Cristo Mountains, Las Animas and Costilla Counties, Colorado: Report 2007-1428, at <https://doi.org/10.3133/of20071428>.

13 Gerhard, L.C., 1974, Redescription and new nomenclature of Manitou Formation, Colorado: American Association of Petroleum Geologists Bulletin, v. 58, no. 7, p. 1397-1406.

14 Hill, V.S., 1983, Mississippian Williams Canyon Limestone Member of the Leadville Limestone, South-Central Colorado: Colorado School of Mines unpub. MS Thesis, Golden Co, 138 p.

15 Houck, K.J., 2001, Sedimentology and Stratigraphy of the Morrison Formation in the Dinosaur Ridge Area Near Morrison, Colorado: The Mountain Geologist, Vol. 38, No. 3, p. 97-110.

16 Johnson, D.H., 1961, The Geology of the Devils Head Quadrangle, Douglas County, Colorado: Colorado School of Mines unpub. MS Thesis, Golden Co, 112 p.

17 Keller, J.W., Siddoway, C.S., Morgan, M.L., Route, E.E., Grizzell, M.T., Sacerdoti, R., and Stevenson, A., Geologic Map of the Manitou Springs 7.5-minute Quadrangle, El Paso, and Teller Counties: Colorado Open File Report OF-03-19, scale 1:24,000.

18 Land, C.B., and Weiner, R.J. Plate 1, Stratigraphic cross section of Dakota group, Lena Gulch to Turkey Creek, Jefferson County, Colorado.

19 Lee, W.T., 1927, Correlation of geologic formations between east-central Colorado, central Wyoming, and southern Montana: U. S. Geol. Survey Professional Paper 149, at <https://doi.org/10.3133/pp149>.

20 LeRoy, L.W., 1946, Stratigraphy of the Golden-Morrison area, Jefferson County, Colorado: Colorado School Mines Quarterly, v. 41, no. 2, p. 115.

21 LeRoy, L.W., 1957, No. 5 Beulah Measured Section: in McKee, E.D., Colorado Measured Sections, Rocky Mountain Association of Geologists, p. 33-34.

22 LeRoy, L.W. and Hayes, J., 1957, No. 3 Golden-Morrison Measured Section: in McKee, E.D., Colorado Measured Sections, Rocky Mountain Association of Geologists, p. 23-26.

23 Lovering, T.S., and Goddard, E.N., 1950, Boulder County tungsten district: in Geology and ore deposits of the Front Range, Colorado: U.S. Geological Survey Professional Paper 223, 214-227 pp., at <https://pubs.er.usgs.gov/publication/pp223>.

24 MacKenzie, D.B., 1965, Depositional environments of Muddy Sandstone, western Denver basin, Colorado: AAPG bulletin, v. 49, no. 2, p. 186-206.

25 Maher, J.C., 1950, Detailed sections of pre-Pennsylvanian rocks along the Front Range of Colorado: Report 68, at <https://doi.org/10.3133/cir68>.

26 Malek-Aslani, M., 1950, The Geology of Southern Perry Park, Douglas County, Colorado: Colorado School of Mines unpub. MS Thesis, Golden Co, 93 p.

27 Maughan, E.K., and Wilson, R.F., 1960, Pennsylvanian and Permian strata in southern Wyoming and northern Colorado: in R.J. Weiner and J.D. Haun eds., Guide to the Geology of Colorado, Geological Society of America, Rocky Mountain Association of Geologists and the Colorado Scientific Society, p. 34-42.

28 Merriman, M., 1960, Engineering geology - Distribution system of the Colorado-Big Thompson Project: in R.J. Weiner and J.D. Haun eds., Guide to the Geology of Colorado, Geological Society of America, Rocky Mountain Association of Geologists and the Colorado Scientific Society, p. 257-273.

29 McKee, E.D. (Ed.), 1957, Colorado Measured Sections, Rocky Mountain Association of Geologists, p. 87.

30 Mitchell, J.G., 1957, No. 4 Canon City-Colorado Springs Measured Section: in McKee, E.D., Colorado Measured Sections, Rocky Mountain Association of Geologists, p. 27-32.

31 Morelock, D., McClure, D., Matuszczak, P., and Bortz, I., 1977, Denver Basin North-South Subsurface Correlation Section A-A', in Irwin, D. Subsurface Cross Sections of Colorado: Rocky Mountain Association of Geologists Special Publication No. 2, 69 pp.

32 Morgan, M.L., Siddoway, C.S., Rowley, P.D., Temple, J., Keller, J.W., Archuleta, B.H., and Himmelreich, Jr., J.W., 2003, Geologic Map of the Cascade Quadrangle, El Paso County, Colorado: Colorado Geological Survey Open File Report OF-03-18, scale 1:24,000.

33 Morgan, M.L., Temple, J., Martin, D., 2006, Geologic Map of the Mount Pittsburg, El Paso, Fremont, and Pueblo Counties, Colorado: Colorado Geological Survey Open File Report OF-06-05, scale 1:24,000.

34 Morgan, M.L., Temple, J., and Martin, D., 2006, Geologic Map of the Mt. Pittsburg Quadrangle, El Paso, Fremont, and Teller Counties, Colorado: Colorado Geological Survey Open File Report OF-06-05, scale 1:24,000.

35 Rowley, J.W., Himmelreich, J.W. Jr., Kupfer, D.H., Siddoway, C.S., Geologic Map of the Cheyenne Mountain 7.5-minute Quadrangle, El Paso County?, Colorado: Colorado Geological Survey Open File Report OF-02-05, scale 1:24,000.

36 Reynolds, R.G., 2024, Jurassic-Cretaceous stratigraphy at Dinosaur Ridge: in Vertebrate paleontology: A tribute to Martin Lockley, L.H. Taylor, R.G. Reynolds and S.G. Lucas, eds., New Mexico Museum of Natural History and Science, Bulletin 95, p. 357-362.

37 Scott, G.R., 1977, Reconnaissance geologic map of the Canon City Quadrangle, Fremont County, Colorado: U.S. Geological Survey Miscellaneous Field Studies Map 892, at <https://doi.org/10.3133/mf892>.

38 Scott, G.R., and Taylor, R.B., 1973, Reconnaissance geologic map of the Beulah Quadrangle, Pueblo County, Colorado: U.S. Geological Survey Miscellaneous Field Studies Map 531.

39 Shultz, A.W., 1986, Sedimentology and Petrology of the Fountain Formation Near Canon City, Colorado: Indiana University unpub. PhD Thesis, Bloomington IN, 184 p.

40 Sweet, W.C., 1954, Harding and Fremont formations, Colorado: AAPG Bulletin, v. 38, no. 2, p. 284-305.

41 Van Horn, R., 1957, Bedrock geology of the Golden quadrangle, Colorado: U.S. Geological Survey Geologic Quadrangle GQ 103, at <https://doi.org/10.3133/gq103>.

42 Waage, K.M., 1955, Dakota group in northern Front Range foothills, Colorado: U. S. Geol. Survey Professional Paper 274B, at <https://doi.org/10.3133/pp274B>.

43 Walcott, C.D., 1892, Preliminary notes on the discovery of a vertebrate fauna in Silurian (Ordovician) strata: GSA Bulletin, v. 3, p. 153-172.

44 Waldschmidt, W.A., and Leroy, L.W., 1944, Reconsideration of the Morrison formation in the type area, Jefferson County, Colorado: Geological Society of America Bulletin, v. 55, no. 9, p. 1097-1114.

45 Weiner, R.J. and Land, C.B. Jr, 1972, Field Guide to the Dakota Group (Cretaceous) Stratigraphy Golden-Morrison Area, Colorado: The Mountain Geologist, v.9, p. 241-267.

- A DMNS, Red Mountain Open Space Measured Section
- B DRMS, Horsetooth Cores
- C DRMS, Carter Lake Measured Section
- D **DRMS, Rabbit Mountain Measured Section**
- E DRMS, Lee Hill Road Measured Section

- a CGS, NCAR Fountain Outcrop Calculated Thickness
- b CGS, Cherry Gulch Fountain Outcrop Calculated Thickness
- c CGS, Red Rocks Fountain Outcrop Calculated Thickness
- d CGS, Mill Creek Fountain Outcrop Calculated Thickness
- e CGS, Perry Park Fountain Outcrop Calculated Thickness
- f CGS, Keeton-CO115 Fountain Outcrop Calculated Thickness
- g CGS, CR132-CR5 Fountain Outcrop Calculated Thickness
- h CGS, Sand Draw Fountain Outcrop Calculated Thickness
- i CGS, Manitou Springs Fountain Outcrop Calculated Thickness

Other references:

Hemborg, T.H., 1996, Basement structure map of Colorado with major oil and gas fields: Colorado Geological Survey Map Series MS 30 1:1,000,000.

Myrow, P.M., Taylor, J.F., Miller, J.F., Ethington, R.L., Ripperdan, R.L., and Allen, J., Fallen arches: Dispelling myths concerning Cambrian and Ordovician paleogeography of the Rocky Mountain region: GSA Bulletin v. 115, no. 6, p. 695-713.

Sweet, D.E. and Sorghan, G.S., 2010, Late Paleozoic tectonics and paleogeography of the ancestral Front Range: Structural, stratigraphic, and sedimentologic evidence from the Fountain Formation (Manitou Springs, Colorado): GSA Bulletin, v. 122, no. 3/4, p. 575-594.