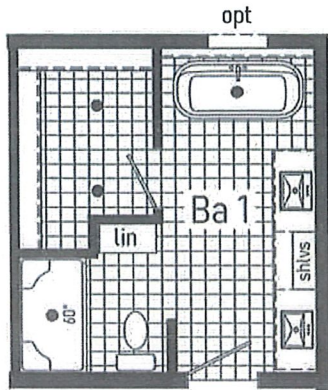
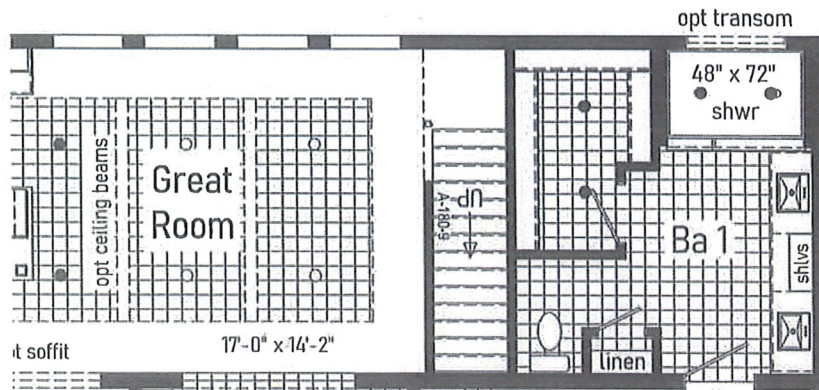


Optional
Freestanding Tub
with 60" Shower



Opt. Open
Attic Stairs
Only available with
9/12 or 12/12 roof

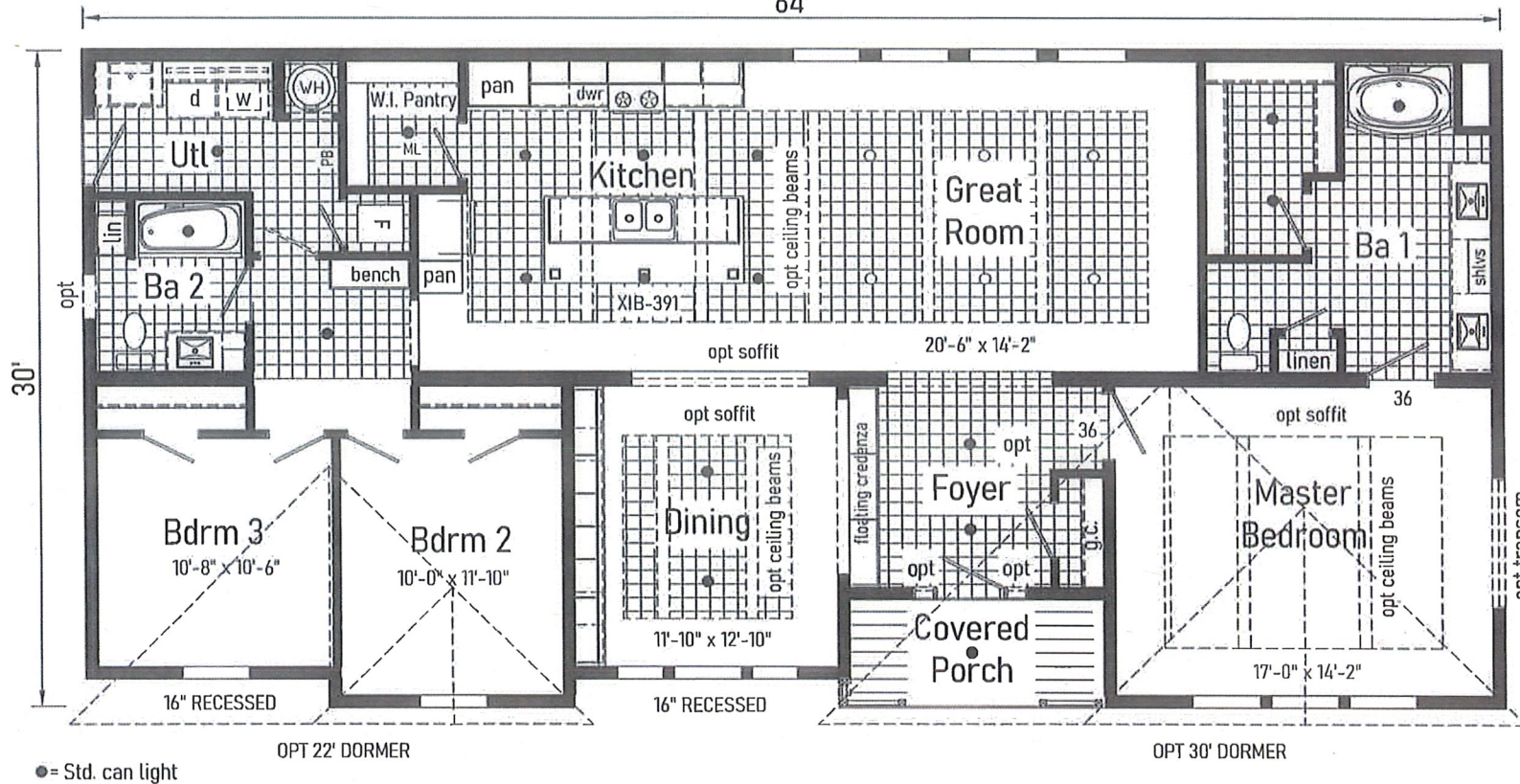


Optional
4'x6' Walk-In
Shower

B932643B . Approx. 1832 Sq. Ft.



Hayworth Max



Builder: 530 Cavco-Crouse

Address: 235 Anthony Grove Rd.
Crouse, NC 28033

Revisions

Scale: 1/8" = 1'-0"

Date: 1/19/26

Cust.:

Prod. Code:

Number:

Order/Plan Number:

Title: Literature

Drawn By:
OY

Reference:
2026-117

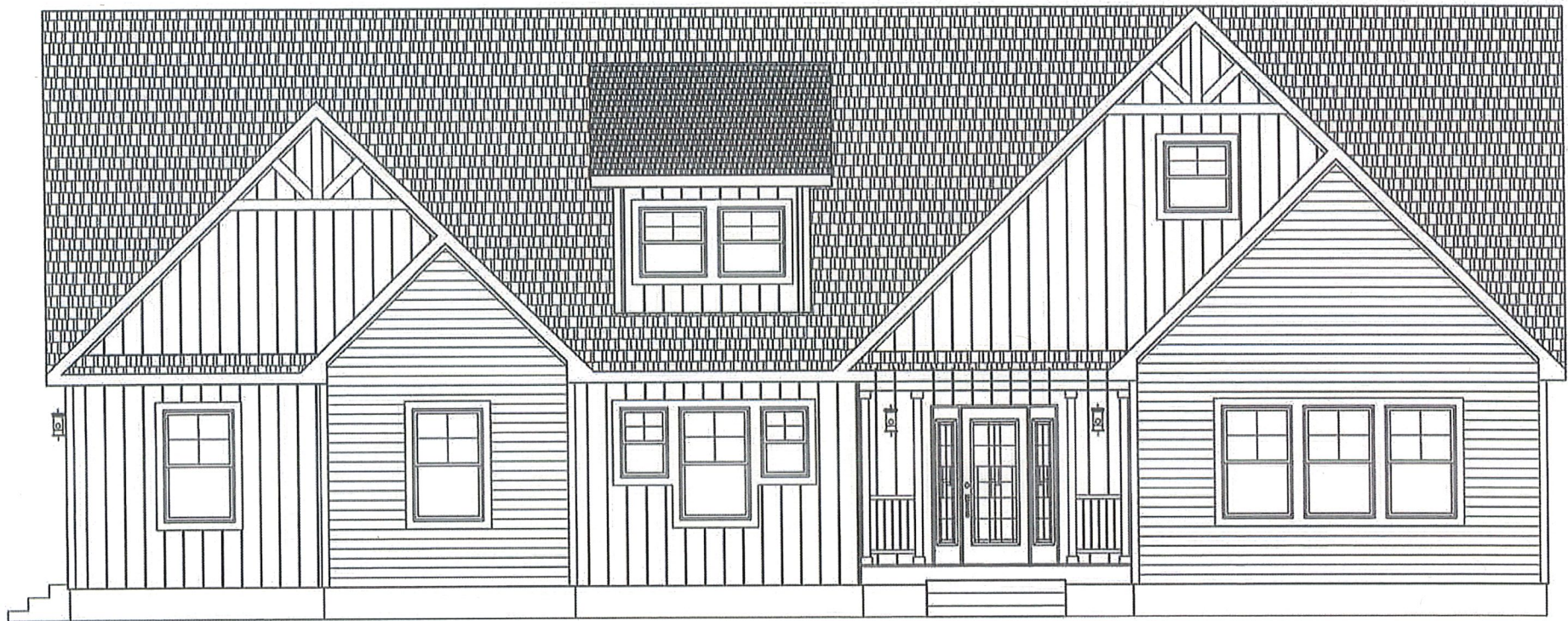
Dir.:

Pg.:

B9
32643B

LIT

Run.:



12
12

B932643B Exterior Elevation w/opt 12/12 roof





