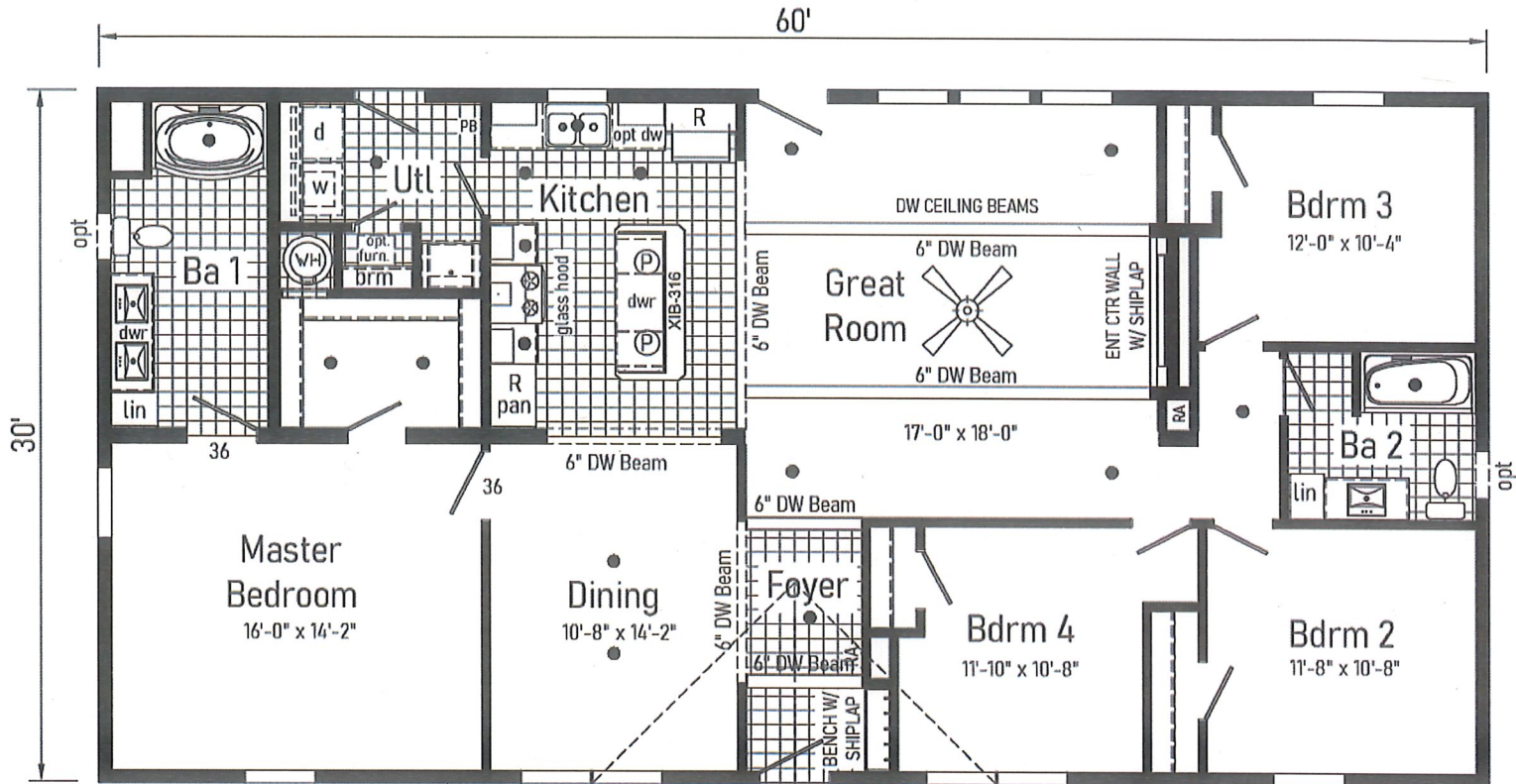
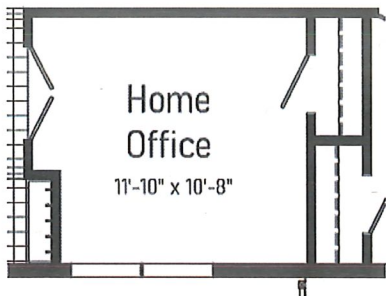


**Optional
4'x6' Walk-In
Shower**



- = Std. can light
- R = Std. 30/36 staggered overhead
- Ⓟ = Std. pendant light

Optional 6' x 30' Saddle Roof/ Covered Porch



**Optional Home Office
Replacing Bedroom 4**

B932604A Approx. 1800 Sq. Ft.

**Blue Ridge Ltd
Essentials**

Builder: 530 Cavco-Crouse	Address: 235 Anthony Grove Rd. Crouse, NC 28033	Revisions	Scale: 1/8" = 1'-0"	Date: 2/3/26	Cust.:	Prod. Code: B9	Number: 32604A	Order/Plan Number:
Title: Literature		Drawn By: OY	Reference:		Dlr.:	Pg.:	LIT	Run.: