



**MIKE'S<sup>®</sup>**  
**CAMERA**  
*picturize your life!*

— SERVICE —  
**CATALOG**

November 2025 Edition



# Table of Contents

---

About Us/General Info .....	2-3	Digital Press .....	28-33
Photo Prints .....	4	Photo Books .....	28
Finishing .....	5	Greeting Cards .....	29
Big Prints .....	6	Photo Calendars .....	30
Fine Art Prints .....	7	Business Cards .....	31
Wall Decor .....	8-13	Flyers .....	32
Canvas .....	8-9	Promotional Printing .....	33
Metal .....	10-11	Framing & Matting .....	34
Stacked Metal .....	11	Vinyl Products .....	35-37
MDF .....	12	Banners .....	35
Wood .....	13	Signs .....	36
Acrylic .....	13	Vinyl .....	37
Film Processing .....	14-16	Photo Gifts .....	38-41
Color Negative .....	14	Drinkware .....	38
Black & White .....	15	Ornaments .....	39
E6 Slide & Odd Formats .....	16	Fabrics .....	40
Novelties .....	41		
Design, Retouch & Scanning .....	18-23	Studio Services .....	42
Restorations .....	18-19	Passports .....	42
Film Scanning .....	20	Smile Club Benefits .....	44
Print Scanning .....	21		
Gather Box .....	22		
Design & Image Recovery .....	22		
Scan Size Chart .....	23		
Video & Audio Transfers .....	24-27		
8mm + 16mm Reels .....	24		
Audio and Video Cassettes .....	25		
Digital Video Services .....	26		
Slideshows .....	26		
Custom Editing .....	26		
Duplication & Packaging .....	27		

# About Us/General Info

---

## Customer Service & Mission

Mike's Camera operates imaging superstores in Colorado and in Northern California. Our success is based on stocking a complete selection of photo and video cameras and other photography accessories, as well as offering printing on virtually anything and everything! Plus, we back our products and services with an expert, friendly, creative and customer-first staff.

## Hours of Operation

Store hours are Monday-Friday from 10:00am to 6:00pm Saturdays 10:00am to 5:00pm and Sundays 11:00am to 5:00pm. We are closed on major holidays; store hours may shorten the day before some holidays. We also extend our hours during peak periods. Please call ahead during these times to confirm store hours.

## Online Orders

Orders submitted through our online systems are accepted electronically. Processing of these orders is done during normal business hours.

## Turnaround Times

It is best to check with the store you are picking up at for up-to-date turnaround times for the services you need. These depend on machine capacity, volume of orders and equipment maintenance time.

## The Smile Club

The Smile Club is our annual membership program that comes packed with discounts! Smile Club memberships are \$24.99 a year for the first year, \$19.99 renewed and are FREE for the first year with camera purchase or active military with ID!

Students receive a 50% discount on the smile club membership.

### Benefits include:

Half price 4x6 prints every Tuesday at our kiosks

25% off 4x6 prints or a FREE second set of prints

25% off color negative and black & white film developing scanning and printing

10% off color slide film processing

10% off all reprints, enlargements, poster & fine-art prints

10% off all scanning, transfer, restoration, and A/V services

10% off photo gifts, mugs & novelties

10% off photo books, calendars and greeting cards

10% off custom framing

10% off canvas and metal prints

20% off ready made picture frames and mats

20% off photo albums and scrapbook supplies

### Smile Club Membership

Type	Code	Price
New	SC (700)	\$24.99
Renewal	SCR (703)	\$19.99
Student	UPC (704)	\$12.50
Military	MSC (702)	FREE

# About Us/General Info

---

## Rush

We don't believe in rush fees, or fees of any sort. If we can do it, we will. If we can't, we'll tell you. If there is a charge to us to make that happen, say rush shipping materials to us for an order then we will pass that on to the customer, but in general we do not believe in rush fees. We believe in working with all of our customers to understand what their needs are, and making it work.

## Shipping

We can ship orders to you through UPS and USPS. We don't make money on shipping; we charge the customer what our cost of shipping and packaging is. Shipping is free on any order over \$150, as well as during certain promotional periods.

## Payment Options

We accept all major credit cards and payment online.

## Limit of Liability

Mike's Camera, Inc. and Mike's Camera of California, LLC. are not responsible for any damage including total loss of photographic originals and customer property. We will not hold orders for pickup for longer than 120 days. Unclaimed photofinishing is not eligible for a refund and does not imply or express any liability on our part.

## Traditional Photographic Processes

Each of our stores has a chemical silver halide lab printer and a color negative film processor. These machines print in sRGB color space and print up to 12" wide. Larger prints will be printed on 24" and larger wide format inkjet printers, with archival photo grade inks and papers.

## Satisfaction Guarantee & Refund Policy

We strive to fulfill your expectations and guarantee satisfaction for your project. When placing your order, our professional team will assess your project and advise on the best outcome. If your project still has not met your needs, our team will work with you until you are satisfied. All circumstances must be discussed in the store. In the event that we make a mistake, we will issue a refund. Some services are non-refundable, such as design and custom framing.

## Copyright

If we receive an order that has any obvious indication of copyright; that appear to be taken by a professional photographer, that appear to be taken from the internet, watermarks on the image or in the metadata, we require a copyright release signed by the legal owner of that image, not just by the person requesting the print. Many professional photographers now grant copyright releases after their shoots to clients, look on your CD or digital download from your photographer for a document stating the permissions granted.

# Photo Prints

Our prints are color and density adjusted by a real human, and quality checked before they get packaged and delivered. Smile Club members save 25% on 4x6 prints from digital OR a second set free of the same images.

All other sizes including film reprints save 10%

## LAB PRINTS from DIGITAL

Glossy / matte photo paper. Discounts are for multiples of same image.

Print Size	Code	1-5	6-19	20+	METALLIC (221)
WALLET PAIR	23 (250)	\$0.99	\$0.79	\$0.59	\$1.49
3.5x5	35(301)	\$0.49	\$0.39	\$0.29	\$0.99
3x4	34 (207)	\$0.49	\$0.39	\$0.29	\$0.99
4x6	46 (302)	\$0.59	\$0.49	\$0.39	\$0.99
4.5x6	4.56 (456)	\$0.59	\$0.49	\$0.39	\$0.99
5x7	57 (253)	\$2.79	\$2.29	\$1.79	\$3.49
8x10	8x10 (254)	\$8.49	\$7.49	\$5.99	\$10.99
8x12	8x12 (256)	\$8.99	\$7.99	\$5.99	\$10.99
11x14	1114 (257)	\$13.99	\$10.99	\$8.99	\$15.99
12x18	1218 (288)	\$24.99	\$19.99	\$16.99	\$29.99

50% off 4x6 prints for Smile Club members on Tuesdays. 19C46 (427)

(Order must be placed on a Tuesday)

## LAB PRINTS from FILM

35mm, 120 or mounted slide.

Print Size	Code	Price
WALLET PAIR	FM23 (361)	\$1.49
4x6	FM46 (337)	\$0.99
5x5	FM55 (260)	\$2.99
5x7	FM57 (338)	\$3.49
4x12	FM412 (390)	\$5.99
8x10	FM810 (358)	\$9.99
8x12	FM812 (326)	\$10.99
11x14	FM1114 (359)	\$16.99
12x18	FM1218 (385)	\$29.99

For duplicates of the same original, refer to LAB PRINTS from DIGITAL for discount pricing.

## SQUARE AND PANORAMIC FROM DIGITAL IMAGES

Print Size	Code	1-5	6-19	20+	METALLIC (221)
4x4	46 (302)	\$0.59	\$0.49	\$0.39	\$0.99
5x5	57 (253)	\$2.79	\$2.29	\$1.79	\$3.49
8x8	8x10 (254)	\$8.49	\$7.49	\$5.99	\$10.99
10x10	1114 (257)	\$13.99	\$10.99	\$8.99	\$15.99
12x12	1218 (288)	\$24.99	\$19.99	\$16.99	\$29.99
4x12	4x12 (491)	\$4.99	\$4.49	\$3.99	\$6.99
10x20	1020 (255)	\$22.99	\$19.99	\$17.99	\$24.99
12x24	1224 (424)	\$29.99	\$27.99	\$23.99	\$34.99
12x36	1236 (271)	\$39.99	\$34.99	\$29.99	\$44.99



## CUSTOM LOCKET PRINTS

Custom Locket Print	LOCKET (335)	\$19.99
Assorted Locket Print	MIXLOCKET (378)	\$6.99

For \$19.99, we can size your photo to fit inside your locket! We will then place up to 6 of the files on a 4x6 canvas and print on a 4x6 matte print for you to cut out and install into your locket. We also offer a cost effective assorted Locket service and can print your image in a variety of sizes for one low price so that you can select the best option for your locket.

# Finishing Options

*Smile Club saves 10%*

Add mounting to your print so that it does not slip or buckle in your frame or if you don't want to frame it at all. Express mount 3/16th foam core available on-site at all locations, all other finishing is done at the main lab.

Print Size	EXPMOUNT (444)		MOUNT (468)		LAMINATE (486)
	3/16" White Foam Core	3/16" Black Gator Board	1/2" Black Ultra Board	3 mil Matte, Gloss with UV	
8x10	\$8.00	\$14.00	\$14.00	\$6.00	
8.5x11	\$9.00	\$16.00	\$16.00	\$7.00	
8x12	\$9.00	\$16.00	\$16.00	\$7.00	
11x14	\$13.00	\$19.00	\$22.00	\$12.00	
12x18	\$14.00	\$24.00	\$28.00	\$13.00	
16x20	\$16.00	\$34.00	\$37.00	\$15.00	
16x24	\$19.00	\$38.00	\$42.00	\$16.00	
20x24	\$23.00	\$44.00	\$50.00	\$19.00	
20x30	\$27.00	\$54.00	\$64.00	\$22.00	
24x30	\$32.00	\$65.00	\$75.00	\$24.00	
24x36	\$40.00	\$74.00	\$84.00	\$28.00	
30x40	\$46.00	\$89.00	\$97.00	\$30.00	
30x60		\$119.00	\$125.00	\$40.00	
40x50		\$114.00	\$139.00	\$44.00	
40x60		\$124.00	\$149.00	\$60.00	
44x60		\$128.00	\$165.00	\$57.00	
40x72		\$140.00	\$180.00	\$60.00	
48x60		\$140.00	\$180.00	\$62.00	
48x72		\$168.00	\$204.00	\$74.00	
44x84		\$180.00	\$218.00	\$80.00	
48x84		\$196.00	\$238.00	\$87.00	
44x96		\$205.00	\$249.00	\$91.00	
48x96		\$209.00	\$272.00	\$99.00	



## Foam Core | Ultra Board

This type of dry mounting is great for framing large photos so that they do not crinkle or bubble in a frame over time. These mounts can also be hung or stuck directly on the wall for a simpler, more subtle look than a framed photo. For very large sizes, 30" x 40" and bigger, we recommend using 1/2" ultra board to prevent warping and bending.

# Big Prints

Smile Club saves 10%

Print epic shots bigger than life economically! Make these poster sizes stand out more by mounting on gatorboard or even adding a custom frame. We offer several different papers, including a few options that can be done quickly or same day for memorials and other rush events. We are able to print custom sizes, if your size is not listed just ask!

Custom INKJET (482)

Size	IN-HOUSE (441)			Poster Board	Semi-Matte	Silver Metallic	HP Heavy Matte	HP Everyday Satin	HP Vivid Backlit
	Enhanced Matte	Premium Luster	Premium Glossy						
8x10	\$18.00	\$19.00	\$19.00	\$22.00	\$19.00	\$21.00	\$18.00	\$18.00	\$18.00
8x12	\$21.00	\$23.00	\$23.00	\$27.00	\$23.00	\$25.00	\$21.00	\$21.00	\$21.00
11x14	\$29.00	\$32.00	\$32.00	\$43.00	\$32.00	\$34.00	\$29.00	\$29.00	\$29.00
12x18	\$36.00	\$41.00	\$41.00	\$53.00	\$41.00	\$44.00	\$36.00	\$36.00	\$36.00
16x20	\$44.00	\$51.00	\$51.00	\$71.00	\$51.00	\$56.00	\$44.00	\$44.00	\$42.00
16x24	\$53.00	\$61.00	\$61.00	\$80.00	\$61.00	\$67.00	\$53.00	\$53.00	\$51.00
20x24	\$53.00	\$63.00	\$63.00	\$90.00	\$63.00	\$70.00	\$53.00	\$53.00	\$53.00
20x30	\$67.00	\$79.00	\$79.00	\$93.00	\$79.00	\$80.00	\$67.00	\$67.00	\$63.00
24x30	\$80.00	\$95.00	\$95.00	\$100.00	\$95.00	\$105.00	\$80.00	\$80.00	\$75.00
24x36	\$84.00	\$102.00	\$102.00	\$120.00	\$102.00	\$114.00	\$84.00	\$84.00	\$78.00
30x40	\$100.00	\$125.00	\$125.00		\$125.00	\$142.00	\$100.00	\$100.00	\$92.00
30x60	\$125.00	\$156.00	\$156.00		\$156.00	\$177.00	\$125.00	\$125.00	\$115.00
40x50	\$167.00	\$208.00	\$208.00		\$208.00	\$236.00	\$167.00	\$167.00	\$153.00
40x60	\$200.00	\$250.00	\$250.00		\$250.00	\$283.00	\$200.00	\$200.00	\$183.00
48x60							\$180.00	\$180.00	\$160.00
40x96	\$213.00	\$293.00	\$293.00		\$293.00	\$347.00	\$213.00	\$213.00	\$359.00



# Fine Art Prints

*Smile Club saves 10%*

Giclee prints are true fine art prints on high quality papers with a variety of soft, smooth and rugged textures. Add our proofing service for **\$30.00 PROOF (331)** and receive up to three 8" x 10" proofs to match color exactly.

## FINEART (445)

Print Size	Smooth Hot Press	Textured Cold Press	Somerset Velvet	William Turner	Fine Art Bartya	Photo Rag Metallic
8x10	\$21.00	\$21.00	\$21.00	\$21.00	\$21.00	\$21.00
8x12	\$25.00	\$25.00	\$25.00	\$26.00	\$26.00	\$26.00
11x14	\$35.00	\$35.00	\$35.00	\$36.00	\$36.00	\$36.00
12x18	\$45.00	\$45.00	\$45.00	\$46.00	\$46.00	\$46.00
16x20	\$58.00	\$58.00	\$58.00	\$59.00	\$59.00	\$59.00
16x24	\$69.00	\$69.00	\$69.00	\$71.00	\$71.00	\$71.00
20x24	\$73.00	\$73.00	\$73.00	\$75.00	\$75.00	\$75.00
20x30	\$92.00	\$92.00	\$92.00	\$94.00	\$94.00	\$94.00
24x30	\$110.00	\$110.00	\$110.00	\$113.00	\$113.00	\$113.00
24x36	\$120.00	\$120.00	\$120.00	\$123.00	\$123.00	\$123.00
30x40	\$150.00	\$150.00	\$150.00	\$154.00	\$154.00	\$154.00
40x50	\$250.00	\$250.00	\$250.00	\$257.00	\$257.00	\$257.00
43x50	\$269.00	\$269.00	\$269.00	\$276.00	\$276.00	\$276.00
40x60	\$305.00	\$305.00	\$305.00	\$314.00	\$314.00	\$314.00



Textured Fine Art | Detail enhanced and magnified

# Canvas

Smile Club saves 10%

Our premium canvas gallery wraps can be ordered in any size, and are made of thick, real canvas photographic stock wrapped over real wood stretcher bars. Edges can be mirrored, colored or left to bleed around the sides.  
**1/2" bars should not be used on unframed prints larger than 16x20\*.**

Print Size	CANVAS (230)			
	Canvas Only	Canvas 1/2" Bars	Canvas 1" Bars	Canvas 2" Bars
8x10	\$25.00	\$51.00	\$63.00	\$73.00
8.5x11	\$32.00	\$55.00	\$67.00	\$77.00
8x12	\$33.00	\$56.00	\$68.00	\$78.00
11x14	\$44.00	\$71.00	\$86.00	\$101.00
12x18	\$62.00	\$94.00	\$111.00	\$131.00
16x20	\$67.00	\$104.00*	\$123.00	\$148.00
16x24	\$72.00	\$114.00*	\$135.00	\$165.00
20x24	\$77.00	\$119.00*	\$140.00	\$170.00
20x30	\$88.00	\$134.00*	\$159.00	\$193.00
24x30	\$100.00	\$151.00*	\$178.00	\$217.00
24x36	\$114.00	\$170.00*	\$199.00	\$243.00
30x40	\$158.00	\$223.00*	\$257.00	\$311.00
40x60	\$317.00	\$406.00*	\$452.00	\$530.00



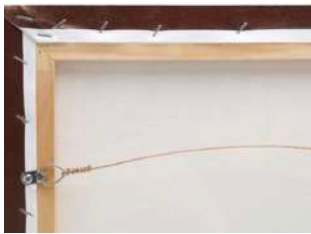
Oil Painting Treatment	PAINT (446)	
	Size	Price
We add depth to your canvas to mimic the aesthetic of an oil painting. Canvas or print not included in price.	11x14	\$87.00
	16x20	\$99.00
	20x24	\$119.00
	24x30	\$150.00

Canvas wraps are available in gallery, mirror, or color borders.

# Image Splits

Smile Club saves 10%

Image splits are a great way to turn a boring wall into something truly stunning. Wondering what to do with a large wall space above your sofa, bed or dining room? Take one image and see how we can transform your photograph into an amazing show piece. Our design team will give you the best guidance on how to make your image cover your entire wall. Image splits can be made into Canvas, Metal or a Fine Art mounted image. Pricing is based on the separate print sizes that you are going to need to create your panel and there is no charge for the design work needed to split your image into multiple sections.



Open back w/ wire hanger included



Dust cover premium back add \$9.50

## FRAMED CANVAS & METAL

CANVAS (230)

Size	Price
8x10	\$99.00
11x14	\$109.00
16x20	\$149.00
20x24	\$179.00
24x36	\$249.00
30x40	\$289.00



### Framed Canvas

1/2" gallery wrap in wood float frame, with a 1/4" gap between the canvas and frame. Available in brown, black & white and premium dust cover back included. Ask about custom sizes, prices listed here are just a starting point.

# Metal Prints

Smile Club saves 10%

Chromaluxe aluminum metal panels are sharp, brilliant and vibrant, and will transform any space! Small and medium sizes have the option for a desktop easel back or a shadow mount, large and super large sizes include a hanging system with stiffeners to keep the panel from bending. All prices include corner treatment and hanging back or desk easel.

## SMALL AND MEDIUM CL1 (316)

Size	Price	Size	Price
4x6	\$15.99	16x20	\$119.99
5x5	\$17.99	16x24	\$139.99
5x7	\$19.99	20x20	\$149.99
8x8	\$31.99	20x24	\$169.99
8x10	\$39.99	20x30	\$219.99
8x12	\$44.99	24x30	\$269.99
11x14	\$54.99	24x36	\$319.99
12x18	\$79.99	30x30	\$329.99
odd sizes <100 sq/in	\$0.55 sq/in	odd sizes >100 sq/in	\$0.45 sq/in

## LARGE SIZES CL100 (366)

## SUPER LARGE FORMAT

CL1000 (368)  
CRATEFEE (493)

Size	Price
30x40	\$360.00
32x48	\$560.00
36x48	\$600.00
<b>Crate Fee</b>	<b>\$85.00</b>
40x60	\$780.00
odd sizes >1000sq/in	\$0.40 sq/in
<b>Crate Fee</b>	<b>\$140.00</b>

### Metal Options

Our metal has the base options of **white or clear**. A white base will produce vibrant colors, while a clear base will show a brushed metal appearance. Finishing options include **glossy and matte**. Corners can also be rounded or squared. These options can be mixed and matched to create personalized art for your home or office.

In order to protect super large format metal prints an additional crate fee is required. **You can order up to three equal size super large format metals with just one crate fee.**

# Stacked Metal

Smile Club saves 10%

Stacked metal prints will transform your image into a vibrant and bold statement. We will print either a texture or another image onto the background panel and float mount the two to create dimension. Get creative with these, the sizes and combinations listed are only suggestions and we can float mount many sizes. We recommend the matte finish on a clear backing panel (standard).

## METAL SQUARED

CLSTACK (323)

Size	Price
6x6 on 8x8	\$64.99
5x7 on 8x10	\$69.99
8x8 on 12x12	\$109.99
4x 5x7 on 1x 12x24	\$179.99
12x16 on 16x20	\$199.99

(out lab service)



# MDF

Smile Club saves 10%

MDF desktop panels, also known as display ready panels, are .25" thick desktop size panels with your image printed directly on the front and an easel built into the panel to stand in either orientation. MDF wall panels are .625" thick with a chamfered black edge and notched keyholes built into the back to hang either way on the wall.

MDFDESK (274)		MDFWALL(263)	
Print Size	MDF Desk	Print Size	MDF Wall
5x7	\$19.99	8x10	\$29.99
8x10	\$24.99	11x14	\$44.99
10x10	\$29.99		
Triptych	\$29.99		



MDF Desk Panel

Triptych is a Tri-Panel MDF desktop display. One 5x7 centered by two 3x5 panels. Super easy, fun way to show and gift your photos! Great for Mother's Day, Graduation and birthdays.



# Wood Panels

Smile Club saves 10%

5/8" thick maple panels with a clear matte coating, and notched keyholes on both long and short sides of the back for hanging in any direction. Wood panels are unique and fit earthy settings. The printed image is not opaque; it shows some wood grain which is part of the charm of the substrate. We recommend leaving a border (shown below, right) to highlight, rather than hide, this feature.



## WOOD PANELS

WOOD (325)

Size	Price
8x8	39.99
8x10	49.99
10x10	59.99
11x14	69.99
16x20	129.99
20x24	179.99
other sizes	\$0.55 sq/in <100 \$0.45 sq/in >100

# Acrylic

Smile Club saves 10%

## FACE MOUNTED ACRYLIC

ACRYLIC (313)

Size	Price (cleat mount)
8x10	\$89.99
11x14	\$149.99
12x18	\$179.99
16x20	\$199.99
16x24	\$239.99
10x40	\$209.99
20x20	\$249.99
20x24	\$259.95
20x30	\$319.99
24x30	\$379.99
24x36	\$439.99
30x40	\$579.99
40x60	\$1199.99

Face mounted acrylic panels are high quality inkjet prints adhered behind a 1/4" thick acrylic, backed with black DiBond for durability and a clean look. Prices include french cleat to hang, but we can substitute a set of four stainless post standoffs for an additional \$19.99. Call store to inquire about our complete list of sizes, these are set and cannot be customized to in-between sizes.



# Color Film Processing Smile Club saves 25%

We develop most film sizes and types including 35mm, APS, medium format, large format, the list goes on! Prices below are for APS, 35mm and 120 color negative film developing, scanning and printing at time of developing. Prints and scans from already processed film are listed on page 4. Scans can be delivered on a CD, customer provided USB or emailed. Prints are glossy or matte 4x6 prints. Smile club members either save 25% on service or get a second set free.

35mm C41 Color Negative	Code	Price	Club	120 C41 Color Negative	Code	Price	Club
35MM DEV ONLY	C35D	\$10.00	\$7.50	120 DEV ONLY	C120D	\$10.00	\$7.50
35MM DEV & LO-RES	C35DLO	\$19.99	\$14.99	120 DEV & LO-RES	C120DLO	\$19.99	\$14.99
35MM DEV & HI-RES	C35DHI	\$29.99	\$22.49	120 DEV & HI-RES	C120DHI	\$26.99	\$20.24
35MM DEV & PRINT	C35DP	\$24.99	\$18.74	120 DEV & PRINT	C120DP	\$19.99	\$14.99
35MM DEV, PRINT, LO-RES	C35DPLO	\$34.99	\$26.24	120 DEV, LO-RES, PRINT	120DPLO	\$29.99	\$22.49
35MM DEV, PRINT, HI-RES	C35DPHI	\$44.99	\$33.74	120 DEV, HI-RES, PRINT	C120DPHI	\$39.99	\$29.99
HALF FRAME SERVICE FEE (FOR PRINT/SCAN)	HF35	\$12.00	\$9.00	PUSH ONLY PROCESS	PUSH	\$2 per roll	

Scanning Resolution:  
Lo Res: 1200x1800  
Hi Res: 2048x3072

2/1 D&P <i>club members</i>	Code	Price	Doubles D&P <i>non-club members</i>	Code	Price
C41 35MM DEV & PRINT 2/1 PRINTS	C35DP21	\$24.99	C41 35MM DEV & PRINT DOUBLE PRINTS	C35DPD	\$39.99

Add film scans to Doubles Develop & Printing service

	Code	Price
ADD LO-RES SCAN TO DOUBLES DEV & PRINT	LOSCAN	\$10.00
ADD HI-RES SCAN TO DOUBLES DEV & PRINT	HISCAN	\$20.00



# B&W Film Processing

*Smile Club saves 25%*

Black and white film including 35mm, 120, 220 and 4x5/5x7 sheet film formats are all processed in house, Monday-Friday, using a batch hand process. Special processes like HC-110 are available upon request, allow for additional time and surcharge of \$25 for setup plus additional \$5 per roll.

35mm B&W Film	Code	Price	Club	120 B&W Film	Code	Price	Club
35MM DEV ONLY	BW35D	\$10.00	\$7.50	120 DEV ONLY	BW120D	\$10.00	\$7.50
35MM DEV & LO-RES	BW35DLO	\$19.99	\$14.99	120 DEV & LO-RES	BW120DLO	\$19.99	\$14.99
35MM DEV & HI-RES	BW35DHI	\$29.99	\$22.49	120 DEV & HI-RES	BW120DHI	\$26.99	\$20.24
35MM DEV & PRINT	BW35DP	\$24.99	\$18.74	120 DEV & PRINT	BW120DP	\$19.99	\$14.99
35MM DEV, PRINT, LO-RES	BW35DPLO	\$34.99	\$26.24	120DEV, PRINT, LO-RES	BW120DPLO	\$29.99	\$22.49
35MM DEV, PRINT, HI-RES	BW35DPHI	\$44.99	\$33.74	120DEV, PRINT, HI-RES	BW120DPHI	\$39.99	\$29.99
HALF FRAME SERVICE FEE (FOR PRINT/SCAN)	HF35	\$12.00	\$9.00	B&W SHEET FILM DEV	BWSHEET	\$5.00	\$3.75
Scanning Resolution: Lo Res: 1200x1800 Hi Res: 2048x3072				PUSH/PULL PROCESS	PUSH	\$2 per roll	

2/1 D&P <i>club members</i>	Code	Price	Doubles D&P <i>non-club members</i>	Code	Price
C41 35MM DEV & PRINT 2/1 PRINTS	BW35DP21	\$24.99	C41 35MM DEV & PRINT DOUBLE PRINTS	BW35DPD	\$39.99

Add film scans to Doubles Develop & Printing service

	Code	Price
ADD LO-RES SCAN TO DOUBLES DEV & PRINT	LOSCAN	\$10.00
ADD HI-RES SCAN TO DOUBLES DEV & PRINT	HISCAN	\$20.00



# E6 Slide Film

Smile Club Saves 10%!

We process 35mm, 120 and 4x5/5x7 E6 sheet film. Turn times may vary.

**Slides are delivered unmounted, uncut and sleeved.**

35mm E6 Film	Code	Price	Club	120mm E6 Film	Code	Price	Club
E6 35MM DEV ONLY	E635D	\$14.00	\$12.60	E6 120 DEV ONLY	E6120D	\$14.00	\$12.60
E6 35MM DEV & LO-RES	E635DLO	\$24.99	\$22.49	E6 120 DEV & LO-RES	E6120DLO	\$23.99	\$21.59
E6 35MM DEV & HI-RES	E635DHI	\$34.99	\$31.49	E6 120 DEV & HI-RES	E6120DHI	\$30.99	\$27.89
E6 35MM DEV & PRINT	E635DP	\$29.99	\$26.99	E6 120 DEV & PRINT	E6120P	\$23.99	\$21.59
E6 35MM DEV, PRINT, LO-RES	E635DPLO	\$39.99	\$35.99	E6 120 DEV, PRINT, LO-RES	E6120DPLO	\$33.99	\$30.59
E6 35MM DEV, PRINT, HI-RES	E635DPHI	\$49.99	\$44.99	E6 120 DEV, PRINT, HI-RES	E6120DPHI	\$41.99	\$37.79
				E6 SHEET FILM	E6SHEET	\$6.00	\$5.40
				PUSH/PULL PROCESS	PUSH	\$2 per roll	

Scanning Resolution:  
Lo Res: 1200x1800  
Hi Res: 2048x3072

## Legacy & Additional Services

We offer a variety of additional services for film processing such as pre-washing contaminated film before developing, working with partners to process rare film types and digital contact sheets.

Legacy film includes Kodachrome, C-22, Kodak Disc Film, Seattle Film Works. K-14 & C-22 are developed as B&W.

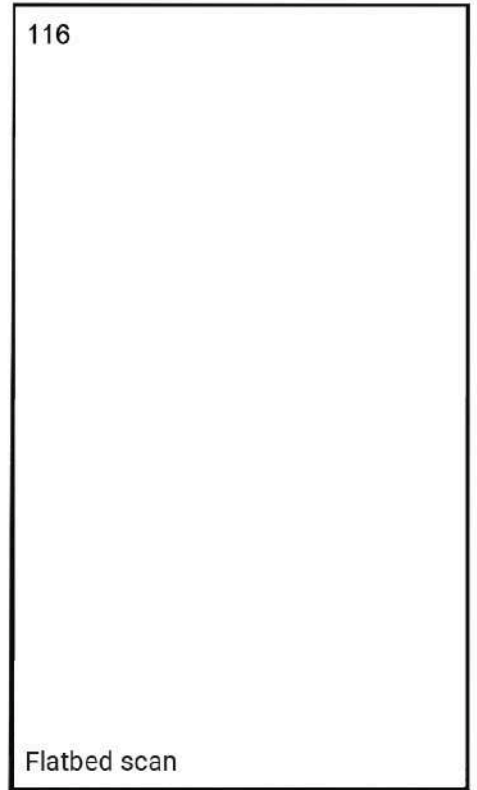
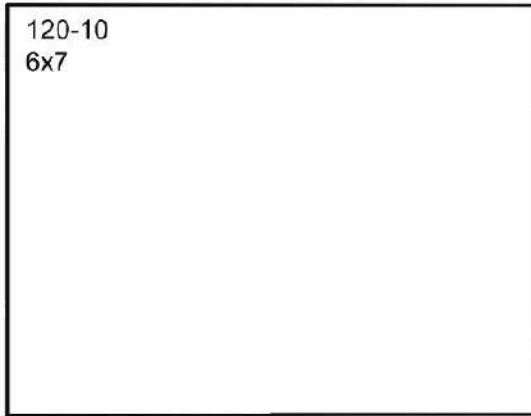
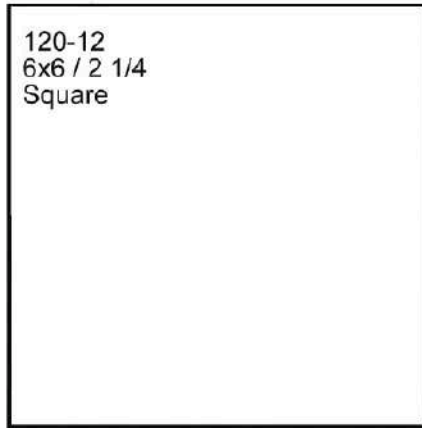
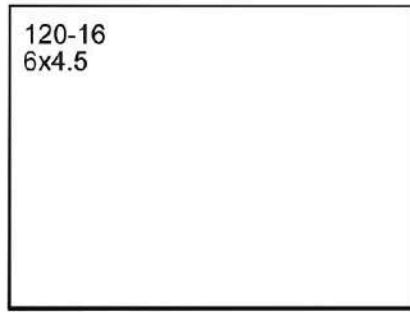
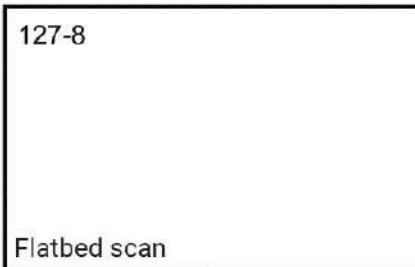
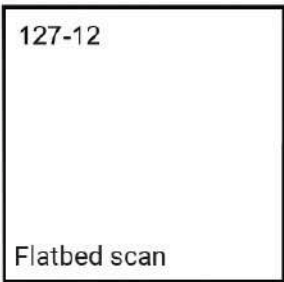
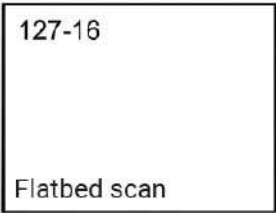
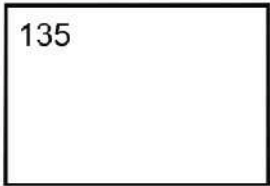
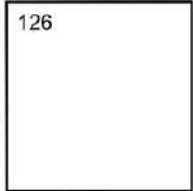
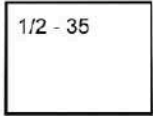
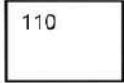
We can no longer accept old movie formats K-11, K-12, E2, E4, EM25, and EM26.



Service	Code	Price
Legacy Film - Unexposed Roll	SPROLL	\$25.99
Legacy Film Dev, Scan & Print	SPROLL	\$35.99 + 99¢ print
Disc Film Dev, Scan & Print	SPDISC	\$35.99 + \$3.00/ frame
Push or Pull processing	PUSH	\$2.00 per roll
Roll Film Wash	ROLLWASH	\$14.99 per roll
Loose Negative Film Wash	FILMWASH	\$5.99 per strip
Digital Contact Sheet	DCS	\$9.99

# Film Frame Size Guide

---



# Restorations

*Smile Club saves 10%*

Restoration work is completed digitally using Photoshop. **We cannot repair damage to your original, physical photo.** Prices do not include scanning or printing. Email proof will be sent to customer.

## **Custom Retouch/Design | \$80/hour + scanning charge**

Sit with one of our custom imaging specialists and tell them exactly what you need to bring a new life to your images.



### **Light | \$45** HFFR (439)

For lightly damaged originals with up to three minor repairs outside of major areas. (\*\*major areas of repair are faces, hands, and areas of lost photographic emulsion which contains details essential to your photo.)



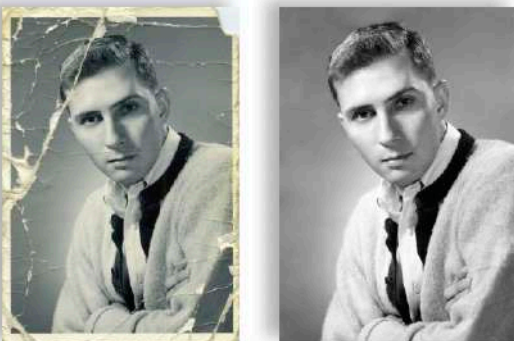
### **Medium | \$69** HFFR (439)

Removal of spots and scratches affecting but not obliterating subject will be repaired. Also includes minimal stains throughout the entire photo.



### **Medium-Heavy | \$119** HFFR (439)

Restorations falling between the medium and heavy categories include repair of all photo damage and enhancement of colors. Tears in photo affecting but not through important facial features will be repaired.

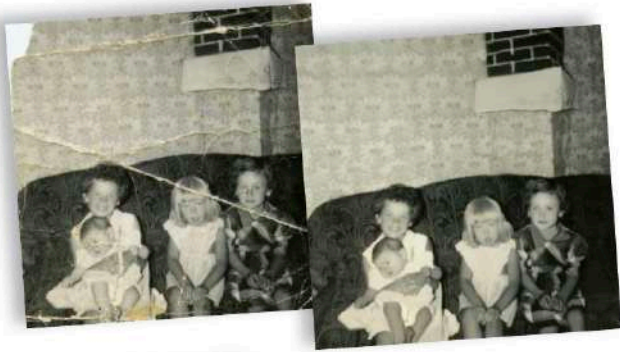


### **Heavy | \$139** HFFR (439)

Heavily stained, spotted, or scratched photos. Repair extensive damage to entire photograph, including detailed areas such as faces. This category also includes any photo with intricate or multiple patterns.

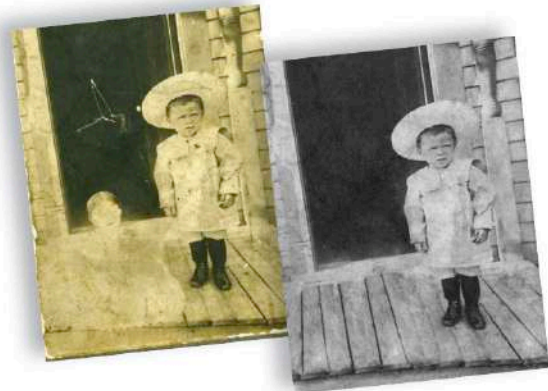
# Restorations

Smile Club saves 10%



## Group-Heavy | \$139 HFFR (439)

Extensive damage to detailed areas of photograph including 2 or more people. Heavily stained, creased, marked or taped photos fall into this category.



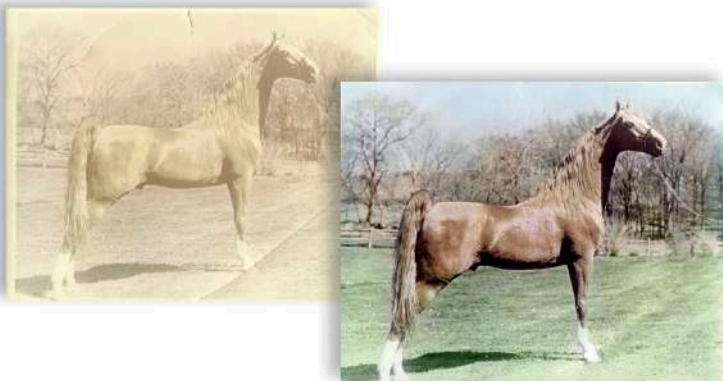
## Add or Remove a Person | \$69 HFFR (439)

Combine images to make one family photo, or remove unwanted guests from a group picture. Remove photo bombers or strangers in the background!



## Change Background | \$69 HFFR (439)

Some photos are almost perfect, but ruined by distractions or clutter in the image. Just choose a background and we will replace the background of your photograph!



## Colorization | \$79 HFFR (439)

We can revitalize black and white or discolored photographs. Bring your photo to us for an expert consultation. Some photos are subject to restoration or retouch work prior to coloring.

# Scanning Film

Smile Club saves 10%

For every type of film or need, we have a scanning solution. Whether it is economical digitizing of large film collections or high quality reproductions of a single image for an epic metal print or large photographic print, or odd and unusual formats. If you aren't sure what you need, ask us, we're here to help!

## SLIDE CAROUSEL PRE-LOADS

Quantity	Resolution	Price
up to 80 mounted slides	3600 x 2400 26 MB .jpg	\$99.00

35mm mounted slides, buy the box, you load 'em, we scan 'em! To get this special price, carousel must be loaded properly for scanning, see insert in box for details.

Price includes scanning, CD and sleeving slides into archival print files.



All bulk scans include basic color correction only. No dust correction or enhancement included. Price is per strip of film (3-7 frames) or single-mounted slide.

Regular scans are 1200x1800 @ 72 dpi.  
Hi-res scans are 2048x3072 @ 300 dpi.

Any format, any output resolution, our flatbed film scans include color adjustments & precise cropping. Price is per frame, by scan resolution.

Dust cleanup service includes surface dust and simple scratches on film. For retouching fingerprints, damaged or heavily soiled negatives, see Restorations, p.18.

## BULK FILM SCAN

Quantity of Strips	REG SCAN	HI-RES SCAN
	35mm, 120 & APS only BFS (280)	35mm, 120, APS HRBFS (261)
1-19	\$3.50	\$4.50
20-39	\$3.25	\$4.15
40-119	\$3.10	\$3.90
120-249	\$2.90	\$3.65
250-499	\$2.75	\$3.45
500+	\$2.60	\$3.25
Uncut roll 35mm APS or 120 roll	\$16.00	\$20.00

110 – additional \$2 per strip SCANFEE (276)

## CUSTOM FLATBED FILM SCAN

Resolution	FILM SCAN	CLEAN SCAN
	AS-IS, any format FS (300)	With Dust Removal FSD (459)
Up to 10 MB	\$9.75	\$16.00
11 to 25 MB	\$13.75	\$21.25
26 to 50 MB	\$19.25	\$28.25
51 to 100 MB	\$26.95	\$37.50
101 to 200 MB	\$37.75	\$50.00
201 to 300 MB	\$52.85	\$66.50
301 + MB	\$74.00	\$88.45

# Scanning Prints

Smile Club saves 10%

Our standard resolution for scanning photos is 300 dpi; our high resolution scans, depending on the size of the photograph, starts at 600 dpi.



## ALBUM PAGE SCANS

Service	Code	Price
Whole Page	PAGESCAN (328)	\$2.99 ea
Page Split	SPLITSCAN (272)	\$6.99 ea

Got photo albums? Can't take them apart to have bulk scanning done? We can scan albums and scrapbooks up to 12x17 in size, and either return a file of just the entire page, or use our software to magically extract each image. Scans are the dimension of image @ 300 dpi, 600dpi is available for an additional 50¢ per page.

Loose, unmounted photos between 2x2 and 8.5 x 11 can be bulk scanned. Any copyrighted images will be omitted! Scan will be size of image @ 300 dpi, returned on a CD or included Flash Drive.

Maximum size is 12x18 original print, larger images must have copy work shot. Images will be precisely cropped & color corrected.

## BULK PRINT SCANNING

Quantity	REG SCAN	HI-RES SCAN
	300 DPI	600 DPI
	BPS (438)	HRBPS (426)
1-49	\$0.99	\$1.49
50-149	\$0.76	\$1.29
150-299	\$0.59	\$1.09
300-499	\$0.46	\$0.99
500+	\$0.36	\$0.79

## CUSTOM PRINT SCANNING

Resolution	AS-IS, any format	With Dust Removal
	PS (237)	PSD (214)
up to 10 MB	\$7.25 (web-only)	\$13.50 (web-only)
11 to 25 MB	\$10.50	\$18.25
26 to 50 MB	\$15.25	\$24.75
51 to 100 MB	\$22.00	\$33.50
101 to 200 MB	\$32.00	\$45.25
201 to 300 MB	\$46.50	\$61.00
301 + MB	\$67.50	\$82.35

## ADDITIONAL SERVICES

Size	Code	Price
Save as .TIFF	TIFFSCAN (492)	\$0.50 per image
Proofbook	PROOFBOOK (478)	\$34.99
Collating	COLLATE (351)	\$0.05 per print

## DIGITAL COPY WORK

DCW (416)

For larger artwork that doesn't fit on a scanner, we can shoot a high resolution image. Artwork must be fixed or dry art only.

Up to 24x30	\$45.00 each.
24x30-40x60	\$65.00 each

# The Gather Box

Smile Club saves 10%

The Gather Box is a useful tool for organizing and archiving large quantities of loose photographs economically. Follow the steps below to begin the process.

## STEP 1: GATHER

Purchase the box for yourself or a loved one. Inside, find instructions and tips to guide you through the sorting and gathering process.

## STEP 2: FILL THE BOX

Fill it with memorabilia and photos, then drop it off at our store. If you have things that won't fit in the box, bring them along so we can address those items separately. Accepts prints 2x3" up to 8x10".

## STEP 3: MAGIC!

Return to find that everything in your box has been magically transformed into digital format. Now you can relax in confidence knowing those precious relics from the past are now protected and easily accessible.

### Gather Box | \$249

GB (317)

Fit as many prints in our box as you can, ~1500 4x6 prints. Price includes scanning to USB at 300dpi.

### Gather Box Gold | \$349

GBG (414)

Fit as many prints in our box as you can, ~1500 4x6 prints. Price includes scanning to USB, in addition: Prints are scanned at 600dpi



### Additional Services

COLLATE (351)

Prints can be scanned in order for 5¢ additional per print  
Folders can be created for groups of photos for \$5.00 each.

# Design Work

Smile Club saves 10%

We offer custom design work – below is a basic description of each service we provide. For an accurate quote, clients will need to consult our team. Talk to our image consultants for more help with your detailed projects.

### Media Transfer | File Conversion

MEDIA (440)

\$5 per item on CDs, 3 ½ Floppy disks, zip drives, old formats.  
Flash memory such as CF, SD and USB is \$1 per every 1GB of transfer, \$20 minimum.

Phones are \$2 per every 1GB, \$50 min.  
Files are transferred to customer provided USB, and/or:

Transfer to CD - add \$4.99 (MCD)

Transfer to DVD - add \$9.99 (MDVD)

### Photoshop Retouch | \$20.00

MCR (448)

Includes Photoshop work that takes approximately 15 minutes. The following are examples of retouches: minimal cosmetic clean-up, obvious stray hairs and lint on clothes. Pricing does not include the cost of scanning, or final print.

### Design Fee | \$80/hour

DDS (234)

Design fees are meant for extensive Photoshop or other set-up work, such as creating marketing or branding products. Proofing is via email or visit in store before print.

### Digital Image Recovery

DIR (398)

We'll recover or attempt to recover corrupt files, flash drives and CDs. No charge for unsuccessful recovery. Recovered files will be delivered to you on a USB flash drive.

### Panoramic Stitch | \$10/image

STITCH (412)

4GB	\$49.00	64GB	\$159.00
8GB	\$59.00	128GB	\$229.00
16GB	\$74.00	256GB	\$269.00
32GB	\$89.00	512GB	\$309.00

# What Size Scan Do I Need?

The chart below is to help you determine if you need a custom scan for your print, and if so, how big? Some print processes, such as photographic lab prints and dye-sublimation metal are printed at 300dpi. Others, such as inkjet, giclee, and canvas are printed at 150dpi. Screen resolution, for viewing on a TV, computer or internet use is at 72dpi and almost anything looks good on screen. With that in mind, screens are deceiving. Just because it looks good on screen, doesn't mean it will translate to print.

Print Size	300 DPI	150 DPI	300 DPI	150 DPI
	Pixels	Pixels	MB	MB
4x6	1200x1800	600x900	6.18	
5x7	1500x2000	750x1050	9.01	
8x10	2400x3000	1200x1500	20.6	5.15
11x14	3300x4200	1650x2100	39.7	9.91
12x18	3600x5400	1800x2700	55.6	13.9
16x20	4800x6000	2400x3000	82.4	20.6
20x24	6000x7200	3000x3600	123.6	30.9
24x30	7200x9000	3600x4500	185.4	46.3
30x40	9000x12000	4500x6000	309	77.2
40x60		6000x9000		154.5
48x96		7200x14400		296.6

We can help with (but are not limited to!) the following projects:

Collage wall décor and photo collections | Custom holiday greeting card design  
 Photographic editing and design | Event or party signage, posters and favors  
 Personalized stationery | Custom photo book design | Graphic design  
 Monogram creation | Wedding, Graduation, Birth announcement stationery



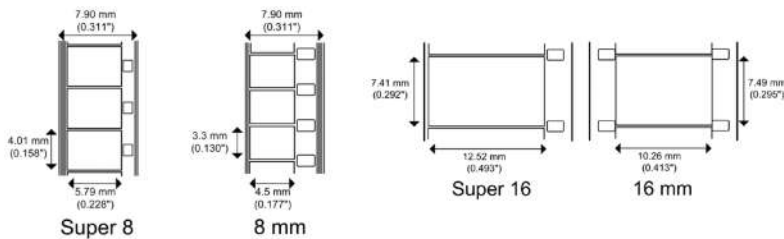
# Reel Film Transfers

Smile Club saves 10%

Reel film is transferred in real time to an .mp4 or .mov file, transferred to Mike's Camera USB drive or DVD. Additional USB, DVD and Blu-Ray are available, and will hold up to 2 hours of transfer time per disc.

## Reels

8mm • Super 8mm • 16mm				.mp4 (Included)	Addt. USB/DVD	Code	BRD	Code
SD	<i>no sound</i>	\$0.35/ft	T8 (455)	included on USB	\$15.00	DV (443)	\$25.00	BR (496)
	<i>w/sound</i>	\$0.60/ft						
HD	<i>no sound</i>	\$0.50/ft	HDT8 (282)	included on USB	\$15.00	DV (443)	\$25.00	BR (496)
	<i>w/sound</i>	\$0.80/ft						



### Additional Services

Custom Chaptering	\$30 setup + \$5 ea chapter	CC (287)
Title Card Up to 10 words on screen	\$30 setup+ \$5 ea title	TITLE (461)

Custom chaptering and title cards can be added to any project. The \$30 setup is only charged once per project. Custom chapter points include a spot on the menu screen that points to a defined place in the video when the find button is pressed. Title cards are static screens with text.

# A/V Transfers

Smile Club saves 10%

Video tapes and audio formats can be converted and digitized, in real time. Video tapes are transferred 1 tape to 1 DVD. Video can be encoded to editable files and are provided on a USB flash drive.

## Tapes

### Tapes to DVD or USB

DVD or USB	\$40 1st hr \$15 ea /add'l hr	DVD (309)
Add-on USB	\$15 /hr + USB drive	ENCODE (457)
PAL to NTSC	\$20 per tape + transfer cost	CONV (413)
Combine Tapes	\$30 1st 2 hrs + \$5 ea /add'l hr	EDIT (392)
Tape Repair	\$20 per tape	REPAIR (407)

### Audio

Transfer	\$30 /hr (\$30 minimum)	AUDIO (360)
Encode	\$15 /hr (\$15 minimum)	ENCODE (457)
Track Separation	\$3 per track	AEDIT (386)
Noise Filtering	\$20 per source	AEDIT (386)

## ABOUT OUR VHS/VHS-C/CASSETTE

Video tapes are transferred 1 tape to 1 DVD. DVDs can hold up to 2 hours at quality setting. We can combine tapes if they fit under two hours, see the Combine Tapes service and charge.

Audio LPs can be transferred to CD as an archival service only. No duplication can be made.

In order to edit a transfer, or post to social media, store on a hard drive or USB drive, the playable DVD must be encoded to file.

Video formats include VHS, VHS-C, Hi-8, Digital 8, HDV, MiniDV, Betamax, Betacam & U-Matic.

Foreign video formats can be converted to NTSC (PAL, SECAM) or vice-versa. Cost of the transfer + \$20 per tape.

Audio formats that can be transferred include cassette, LP, DAT, reel-to-reel, mini-cassette and micro-cassette.

Audio is transferred to CD or USB, but can be encoded as well.



# Digital Video

Smile Club saves 10%

## Digital Video Projects

### DVD Slideshows

Slideshow	\$100 up to 75 images \$0.35 ea additional image	DVDSLIDE (464) (\$100 min)
Legacy Slideshow	\$200 up to 150 images \$0.45 ea additional image	LS (228) (\$200 min)
Music added	\$5 per song	MUSIC (289)

### Custom Editing

Custom Editing	\$80/hr by appointment	CEDIT (375)
Footage Preview	\$30/hr by appointment	CEDIT (375)

### Digital Video Services

Digital Camera Transfer playable disc only	\$30 1st hour \$20 ea addt'l hour	DCT (458)
Still Frame Grab	\$80/hr by appointment	CEDIT (375)

## ABOUT OUR DIGITAL VIDEO SERVICES:

Slideshows include either a ready to view DVD or USB.

Basic slideshows include image rotation only.

Legacy slideshows also include poly mailer packaging, cropping, color & density correction of images.

Due to copyright laws, music must be provided by the client.

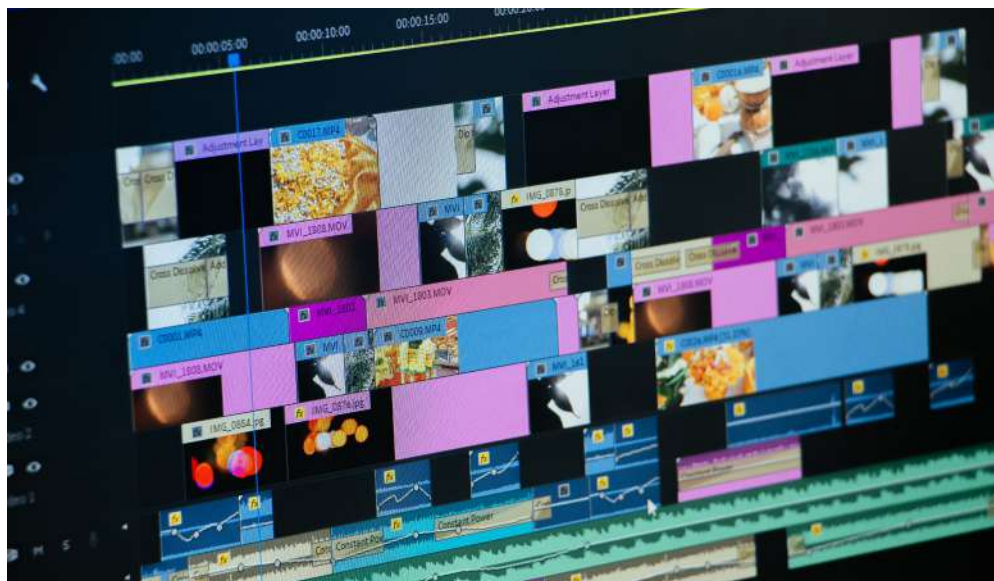
Still frame grabs are screen captures, put to .JPG file on a USB.

We will attempt to have any slideshows for memorial service done within 48 hours, depending on complexity of project.

Custom editing is by appointment, with a technician, for editing any footage. Transfer fees will apply for any capture time.

Footage previews are by appointment to view footage on our equipment for \$30/hour.

Digital camera transfers are for footage from hard drive recording cameras, mini-dvd cams and are transferred to a DVD or Blu-Ray is available on request.



# Disc Duplication

Smile Club saves 10%

CDs and DVDs are optical media; they are burned with a laser onto a disc. This is an imperfect process and sometimes yields a product that will play on one player but not another. For professional distribution of 1,000 discs or more we recommend using our replication service. This will produce a glass master that is then pressed for economical and reliable distribution.

Mike's Camera branded discs will be used for projects unless printing either black on silver disc or full color on white disc is specified. Add \$20 per project to set up.

Quantity	CD DUPLICATION CDD (408)			DVD DUPLICATION DVD (298)				BLU-RAY BRD (231)
	Black Text	Full Color white disk	Mike's	Black Text	Full Color	DL/ Gold	Mike's	BR-D
1-24	\$5.00	\$7.00	\$5.50	\$6.50	\$8.50	\$11.50	\$6.00	\$15.00
25-74	\$4.00	\$6.00	\$4.50	\$5.50	\$7.00	\$11.00	\$5.00	\$13.00
75-124	\$3.00	\$5.00	\$2.75	\$5.00	\$6.50	\$9.50	\$4.50	\$11.00
125-199	\$2.00	\$4.00	\$1.75	\$4.50	\$6.00	\$9.00	\$4.00	\$10.00
200-499	\$1.75	\$3.75	\$1.50	\$4.00	\$5.50	\$8.50	\$3.50	\$9.00
500-799	\$1.50	\$3.00	\$1.25	\$3.50	\$5.00	\$8.00	\$3.00	\$8.00
800-999	\$1.40	\$2.00	\$1.15	\$3.00	\$4.50	\$7.50	\$2.75	\$7.00
1000+	\$1.20	\$1.60	\$1.00	\$2.75	\$4.00	\$7.00	\$2.50	\$6.50

Available in Colorado only

REPLICATION \$65 setup + price per unit • REP (420)			PACKAGING PACKAGE (423)			
Quantity	CD	DVD	Item	Price ea		
1000-1999	\$2.12	\$2.55	DVD Case	\$0.65	Super Jewel Box	\$0.90
2000-2999	\$1.08	\$1.08	2 DVD Case	\$0.85	Jewel Case Black	\$0.70
3000-4999	\$0.98	\$0.98	3 DVD Case	\$1.15	Jewel Case Clear	\$0.80
5000-9999	\$0.88	\$0.88	4 DVD Case	\$1.25	Jewel Case 2-disc	\$0.95
10000+	\$0.83	\$0.83	Slim DVD Case	\$0.75	Shrink Wrap Case	\$0.75

PACKAGING INSERTS PACKAGE (423)						
Quantity	DVD Case Slipsheet	Jewel Case 1 Panel	Jewel Case 2 Panel	Jewel Case 4 Panel	Tray Liner 1 Sided	Tray Liner 2 Sided
1 - 49	\$0.95	\$0.77	\$0.95	\$1.20	\$0.88	\$1.00
50 - 249	\$0.88	\$0.72	\$0.88	\$1.15	\$0.77	\$0.95
250 - 749	\$0.77	\$0.65	\$0.77	\$1.05	\$0.72	\$0.88
750 - 999	\$0.72	\$0.60	\$0.72	\$0.95	\$0.65	\$0.77
1000+	\$0.65	\$0.55	\$0.65	\$0.88	\$0.60	\$0.65

# Photo Books

Smile Club saves 10%

Photo books are available online at [mikescamera.com](http://mikescamera.com). Books come in a multitude of colors, sizes and styles. Photo upload is available through your computer. A variety of layouts are provided online and at our kiosk in-store. Layflat or flush-mounted albums are printed on real glossy photographic paper and bound to a backer board to make 2-sided.

## PHOTO BOOKS

PHOTOBOOKS (497)

### CUSTOM HARDCOVER BOOKS

- 20-45 pages
- \$0.99/page after 20 pages
- Pages on uncoated 100# text
- Glossy laminate hardcover wrap with your design

8x8	8.5x11	10x10	12x12
\$29.99	\$34.99	\$39.99	\$49.99

### Staple Binding

- Square or Portrait Letter
- 1st page is cover
- Spreads are in sets of 4

Style	8.5x11	8x8
20 Pages	\$24.99	\$14.99

### Classic Binding

- Linen cloth & leather
- Keyhole window on cover
- Color choices
- 20-45 pages
- \$0.99/page after 20 pages
- Pages on uncoated 100# text

8x8	8.5x11	12x12
\$19.99	\$24.99	\$39.99
<i>black, navy or red linen</i>	<i>black leather, or black, navy, red or taupe linen</i>	<i>black leather or black linen</i>

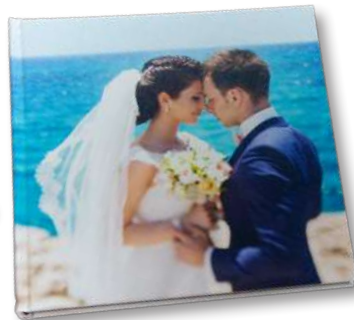
### Layflat Binding

- Perfect layflat book binding
- Layouts spanning both pages
- 16 pages / 32 page limit

Size	Glossy	Silk/Metallic	addt'l pg
10x10	\$99.99	\$119.99	\$1.99 ea
12x12	\$149.99	\$169.99	\$1.99 ea



Linen Keyhole



Custom Hardcover



Staple Bound



# Greeting Cards

Smile Club saves 10%

All card orders come with envelopes. **Templates and designs are offered online at [mikescamera.com](http://mikescamera.com) and at our photo kiosks in the store.** Custom sizes, shapes, folds and materials are available, consult our store team for options. Matte is our standard option for our photo cards, and we use a signature velvet 120# cover for our press cards.

QUANTITY	4x8 & 5x7 Slimline Photo Paper Cards		2-Sided Flat	5x5/5x7 Folding	Accordian Fold
	4SLIM (209)	5SLIM (294)	5STAT (315)	5FOLD (432)	5ACC (347)
1-24	\$0.99	\$1.29	\$1.99	\$2.49	\$2.99
25-48	\$0.89	\$1.16	\$1.79	\$2.24	\$2.69
49-96	\$0.84	\$1.10	\$1.69	\$2.12	\$2.54
97-192	\$0.79	\$1.03	\$1.59	\$1.99	\$2.39
193-384	\$0.74	\$0.97	\$1.49	\$1.87	\$2.24
385+	\$0.69	\$0.90	\$1.39	\$1.74	\$2.09



CARDMISC (259)

	Included	add \$0.15 each
CARDSTOCK	PHOTO PAPER / 120#C	LINEN
ENVELOPE	WHITE ENVELOPE	SOLID COLORS, LINEN



# Calendars

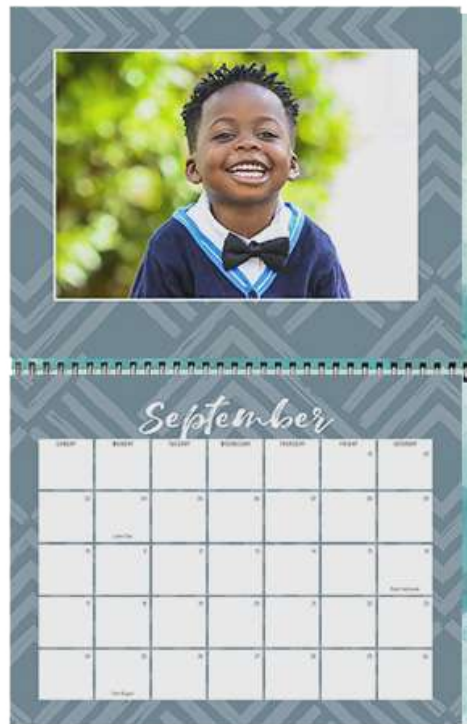
Smile Club saves 10%

Photo Calendars are available online at [mikescamera.com](http://mikescamera.com) and at our photo kiosks in the store. Photo upload is available through your compute. A variety of layouts are provided online.

QUANTITY	8.5x11 KIOSK11 (229)	12x12 KIOSK12 (208)	Desktop SPEC (248)	Clip-It SPEC (248)
1ST	\$24.99	\$29.99	\$19.99	\$19.99
2-25	\$19.99	\$24.99	\$14.99	\$14.99
26-50	\$16.99	\$20.99	\$13.99	\$13.99
51-100	\$15.99	\$19.99	\$12.99	\$12.99
101-250	\$14.99	\$18.99	\$11.99	\$11.99
251+	\$13.99	\$17.99	\$10.99	\$10.99



Clip-It Calendar



8.5 x 11 Wall Calendar



5 x 10 Desktop Calendar

# Business Cards

Smile Club saves 10%

Business cards come in a minimum order of 100 and are purchased by the set. If you need a custom amount or size let us know. Our standard cardstock is 120# glossy cover. Specialty cardstock is available for an additional upgrade per card. Price is the same for 1 or 2-sided, B&W or color.

Pricing is for pre-designed artwork or ordered using our online templates. Ask about our custom designs. 100 card minimum order.

## BUSINESS CARD SETS

XEROX (314)

Quantity	Stock	Price
100	120C Glossy	\$12.00
250		\$27.50
500		\$50.00
1000		\$90.00
100	Classic Linen	\$18.00
250		\$40.00
500		\$75.00
1000		\$130.00
100	16pt Accent Uncoated	\$24.00
250		\$55.00
500		\$95.00
1000		\$170.00



# Copies & Flyers

Smile Club saves 10%

Standard flyer and color copy sizes range from 8.5x11 to 12x18. We offer 8.5x11 both on simple bond copy paper as well as 100# glossy text. Call for custom sizes. \$30 setup for non-standard sizes.

## DIGITAL SHORT RUN PRINTING

XEROX (314)

<b>Flyers 100# Glossy Text</b>	<b>1 (MIN)</b>	<b>2-250</b>	<b>251-500</b>	<b>501-1000</b>	<b>1000+</b>
8.5"x11" Color 2 Sided	\$4.00	\$1.75	\$1.58	\$1.42	\$1.28
8.5"x11" Color 1 Sided	\$4.00	\$0.94	\$0.85	\$0.76	\$0.69
11"x17" Color 2 Sided	\$4.00	\$3.24	\$2.91	\$2.62	\$2.36
11"x17" Color 1 Sided	\$4.00	\$1.74	\$1.57	\$1.41	\$1.27
12"x18" Color 2 Sided Poster	\$4.00	\$3.94	\$3.54	\$3.19	\$2.87
12"x18" Color 1 Sided Poster	\$4.00	\$2.12	\$1.90	\$1.71	\$1.54
<b>Flyers 32# Office Copy Paper</b>	<b>1 (MIN)</b>	<b>2-250</b>	<b>251-500</b>	<b>501-1000</b>	<b>1000+</b>
8.5"x11" Color 2 Sided	\$4.00	\$1.35	\$1.22	\$1.09	\$0.98
8.5"x11" Color 1 Sided	\$4.00	\$0.74	\$0.67	\$0.60	\$0.54
<b>Comp Cards 80# Glossy Cover</b>	<b>1</b>	<b>2-24</b>	<b>25-49</b>	<b>50-74</b>	<b>75-99</b>
8.5"x11" Color 2 Sided	\$4.00	\$3.00	\$2.70	\$2.43	\$2.19
8.5"x11" Color 1 Sided	\$4.00	\$2.75	\$2.48	\$2.23	\$2.00
5.5"x8.5" Color 2 Sided	\$4.00	\$3.75	\$3.38	\$3.04	\$2.73
5.5"x8.5" Color 1 Sided	\$4.00	\$2.50	\$2.25	\$2.03	\$1.82
<b>8.5"x11" Transparency</b>	<b>1</b>	<b>2-24</b>	<b>25-49</b>	<b>50-74</b>	<b>75-99</b>
4mil Clear 1 Sided	\$4.00	\$1.08	\$0.97	\$0.88	\$0.79
<b>Brochures 100# Velvet Text</b>	<b>1 (MIN)</b>	<b>2-250</b>	<b>251-500</b>	<b>501-1000</b>	<b>1000+</b>
8.5"x11" Tri-fold	\$4.00	\$1.90	\$1.71	\$1.54	\$1.39
<b>Rackcards and Postcards</b>	<b>1 (MIN)</b>	<b>2-250</b>	<b>251-500</b>	<b>501-1000</b>	<b>1000+</b>
Rackcards 3.66"x8.5" 80# Glossy	\$4.00	\$0.75	\$0.68	\$0.61	\$0.55
6"x11" 15pt Glossy or Velvet	\$4.00	\$1.95	\$1.76	\$1.58	\$1.42
5.5"x8.5" 15pt Glossy or Velvet	\$4.00	\$1.75	\$1.58	\$1.42	\$1.28
A7 110# Glossy or Velvet	\$4.00	\$0.99	\$0.89	\$0.80	\$0.72
<b>Stickers per Sheet</b>	<b>1st (1)</b>	<b>2-24</b>	<b>25-49</b>	<b>50-74</b>	<b>75-99</b>
Address Label 2.625"x1"x30	\$4.00	\$2.00	\$1.90	\$1.81	\$1.71
2"x2" Circle Sticker x20	\$4.00	\$1.25	\$1.19	\$1.13	\$1.07
Wine Label 3.75"x4.75"x4	\$4.00	\$1.75	\$1.66	\$1.58	\$1.50
2.5"x2.5" Circle Sticker x12	\$4.00	\$1.00	\$0.95	\$0.90	\$0.86

# Brochures

Smile Club saves 10%

Here are just some of the things we can print on demand. Don't see what you need? Ask one of our team members. We can press print virutally anything. Trifold and brochures are printed on 100# glossy test, rackcards on 80# glossy cover.

## PROMOTIONAL PRINTING

XEROX (314)

Size	Quantity	Attribute	Price	Size	Quantity	Attribute	Price
8.5x11	100	Trifold 2-sided	\$171.00	5.5x8.5	10	Comp Card (Z-Card)	\$25.00
8.5x11	250		\$385.00	5.5x8.5	25		\$56.25
8.5x11	500		\$695.00	5.5x8.5	50		\$101.50
3.6x8.5	100	Rackcard 2-sided	\$75.00	5.5x8.5	100		\$182.00
3.6x8.5	250		\$170.00	8.5x11	10	Headshot	\$30.00
3.6x8.5	500		\$305.00	8.5x11	25		\$67.50
3.6x8.5	1000		\$550.00	8.5x11	50		\$121.50
9x12	10	Presentation Folder	\$18.00	8.5x11	100		\$219.00
6x11	100	Postcards	\$195.00	1x2.625	30	Address Labels	\$5.00
3.75x8.5	100	Table Tent	\$196.00	5.5x8.5	50	50 Page Pad	\$287.50
3.75x8.5	250		\$417.50	5.5x8.5	50	100 Page Pad	\$330.00
3.75x8.5	500		\$750.00	8.5x11	50	100 Page Pad	\$450.00



Trifold



Rackcard



Presentation Folder

Presentation Folder Pockets

# Framing & Matting

*Smile Club saves 10%*

We offer custom framing and custom matting at our **Colorado locations**. Because our products are custom, they will need to be ordered and shipped in, so please allow at least a week for the product to arrive. Ask about our pre-cut mats that may still be in stock. Mats and mat openings can be cut to any size. Next day mats can be sized and cut and delivered to any store to customize our selection of ready-made frames.

EM (436)			
Size	Mat	Print Install	Matt & Install
8x10	\$14.00	\$10.00	\$24.00
11x14	\$19.00	\$12.00	\$31.00
16x20	\$24.00	\$16.00	\$40.00
18x24	\$28.00	\$18.00	\$46.00
20x24	\$30.00	\$20.00	\$50.00
22x28	\$34.00	\$23.00	\$57.00
24x36	\$44.00	\$28.00	\$72.00
30x40	\$54.00	\$33.00	\$87.00



Super White - C9613



Chalk - C9801



White Sands - C9508



Black Belt - C9632



Cloud Grey - C9634



Guacamole - C9602



Woods Green - C9538



NYPD - C9552



Cornflower - C9882



Fresh Brew - C9590



Brick - C9893



American Red - C9837



Chalk/Black Core - C9901



Black Belt/Black Core - C9948

• All mats include one opening; this price is an additional opening in your mat.

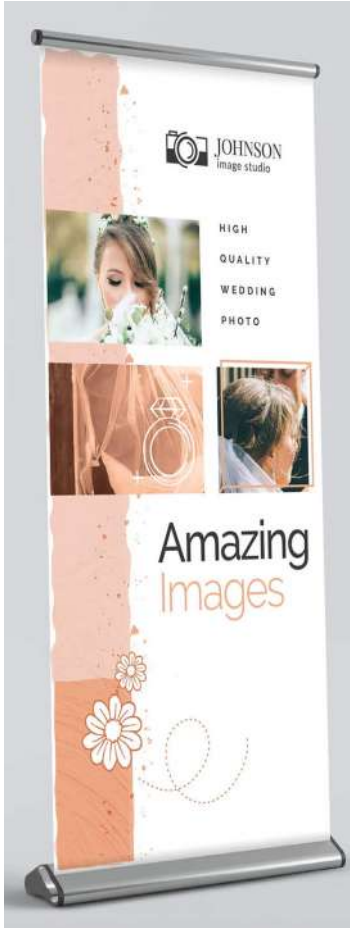
**2-4 Additional Openings – \$5.00 ea**

**More than 5 Openings – \$3.00 ea**

# Banners

Smile Club saves 10%

We make banners for any occasion or application. Indoor, outdoor, pull-up banners for events, x-banners for trade show and point-of-purchase as well as vinyl cut and grommets to any size or configuration.



Pull-up banner

## FULL COLOR VINYL BANNERS

VINYL (411)

Size	Price
16x20	\$36.00
16x24	\$43.00
20x30	\$52.00
24x36	\$66.00
30x40	\$92.00
30x60	\$100.00
30x72	\$110.00
40x60	\$100.00
40x72	\$120.00
40x84	\$140.00
44x72	\$132.00
44x96	\$147.00
58x96	\$193.00
Grommets	\$2.00 each

- Pull-up and X-banners are adjustable, standing banners. Once a stand is purchased, banners may be switched out with a new banner once your marketing campaign is finished.

- When designing the banner print, leave 2" of extra space at the top & 6" of extra space at the bottom for print install..

## BANNER STANDS

Description	Price
X-Banner 24x63	\$89.99
XBS (487)	
Pull-Up Banner 33x77	\$129.99
UPBANNER (483)	



# Sign & Display Printing

Smile Club saves 10%

Capture vibrant graphic detail, display brilliant color. From event signage to retail displays, achieve a high-quality look with versatile, easy-to-handle, quick-mount self-adhesive vinyl or banner material ideal for a wide range of indoor and outdoor applications.



## HP LATEX LARGE FORMAT

Permanent or removable self-adhesive vinyl available in matte or glossy.

Lamination available for harsh outdoor environments.

Size	Price	VINYL (411)	Size	Price
8x10	\$12.00		30x40	\$108.00
11x14	\$24.00		40x60	\$183.00
12x18	\$30.00		48x72	\$192.00
16x20	\$38.00		48x96	\$288.00
16x24	\$43.00		60x96	\$325.00
20x24	\$50.00		60x120	\$375.00
20x30	\$54.00		Odd sizes available	
24x36	\$78.00			

### Backlit film

Available with or without adhesive

Size	Price	VINYL (411)
16x24	\$51.00	
20x30	\$63.00	
24x36	\$78.00	
30x40	\$150.00	
40x60	\$180.00	
48x72	\$200.00	
Odd sizes available		

### Matte or glossy vinyl banner

Grommets available at \$2/per

Size	Price
30x40	\$92.00
40x60	\$100.00
48x72	\$120.00
48x96	\$160.00
60x96	\$193.00
60x120	\$210.00
Odd sizes available	

## HP Latex Inks and light-fade resistance

This table shows the expected life of prints produced with HP Latex Inks on different media types and in different display environments based on internal testing by the HP Image Permanence Lab:

	Outdoor no lamination	Outdoor with lamination (film)	Indoor in window no lamination	Indoor away from direct sunlight, no lamination
Self-adhesive vinyl	Up to 3 yrs	Up to 5 yrs	Up to 5 yrs	Up to 200 yrs
PVC frontlit banner	Up to 3 yrs	n/a	Up to 5 yrs	Up to 200 yrs
PET backlit film	n/a	n/a	Up to 2 yrs	Up to 60 yrs
Paper, wallpaper	n/a	n/a	Up to 2 yrs	Up to 60 yrs
Canvas, textile	n/a	n/a	Up to 2 yrs	Up to 200 yrs

# Sign & Display Printing

Smile Club saves 10%

We offer a wide variety of vinyl material to meet your business needs. Installation available. Contact our business to business specialist for quotes on any job.

Contact: [brabin@mikescamera.com](mailto:brabin@mikescamera.com)



Backlit film

## Retail Signage

Create eye-catching promotional displays and provide uniform color across rigid and flexible substrates for your customer campaigns.

## Outdoor Signage

Produce unforgettable banners and building wraps that remain durable in outdoor conditions.

## Backlit Signage

Print vibrant backlit applications that leave lasting impressions.

## Window Signage

Set yourself apart with high-opacity white that resists yellowing over time.



Adhesive vinyl

# Photo Gifts

Smile Club saves 10%

## DRINKWARE

All ceramic sublimation mugs listed are dishwasher safe, all other drink items are hand wash.



11oz Mug

### 11oz Ceramic Mugs

Item	Code	Price
11oz mug	MUG11 (311)	\$14.99



15oz Mug

### 15oz Ceramic Mugs

Item	Code	Price
15oz mug	MUG15 (466)	\$15.99

15oz Travel Tumbler

### On the Go

Item	Code	Price
10oz Camp Cup	CUP (388)	\$16.99
25oz Water Bottle	BOTTLE (418)	\$19.99
15oz Travel Tumbler	TUMBLER (319)	\$19.99



25oz Water Bottle



10oz Camp Cup

# Photo Gifts

Smile Club saves 10%

## ORNAMENTS

Style	Code	Price
Metal	ORNAMENT (433)	\$12.99
Beneluxe, Circle, Ornament, Berlin		
Wood	ORNAMENT (433)	\$12.99
Beneluxe, Circle		



Beneluxe



Berlin



Circle



# Photo Gifts

Smile Club saves 10%

## FABRICS

T-shirt fabrics come in polyblend and are white.  
Dark colors do not sublimate, nor do natural fabrics.

### T-shirts & Apparel

Shirt Size	Code	Price	Item	Code	Price
Adult S, M, L or XL	TSHIRT (339)	\$16.99	Apron	APRON (429)	\$19.99
Youth YS, YM, YL	TSHIRTY (354)	\$16.99	Baby Onesie 6M, 12M, 18M	ONESIE (460)	\$19.99



### Totes & Fabric Squares

Item	Code	Price
Canvas Tote	TOTE (379)	\$24.99
Fabric Squares	SQUARE (240)	\$0.15 per SQ/IN

Fabric squares are custom cut squares of bulk sublimation fabric material, white polyblend, with your image printed on it. It is rough cut larger than the request size so they can be sewn or used in other projects.

# Photo Gifts

Smile Club saves 10%

## NOVELTIES

Item	Code	Price
Button 2.25 in	BUTTON (349)	\$0.99
Bag Tag 2.5x4.5	TAGS (321)	\$9.99
Coasters, set of 4 4x4	SCS (391)	\$19.99
Coasters, slate set of 3	SLATE (277)	\$29.99
Cutting Board 8x12	SGCB (489)	\$24.99
Cutting Board 12x16	LGCB (387)	\$34.99
Flip Flops (pair)	FLIPFLOP (239)	\$24.99
Magnet 2x2	MAGNET (425)	\$4.99
Magnet 2x3	MAGNET (425)	\$5.49
Magnet Board 11x14	MAGNETBOARD (453)	\$29.99
Mini Licence Plate	MLP(290)	\$19.99
Mousepad	MOUSEPAD (340)	\$14.99
Notepad 4x5 50 page	XEROX (314)	\$14.99
Notepad 5x5 50 page	XEROX (314)	\$16.99
Notepad 4x10 50 page	XEROX (314)	\$18.99
Photo Frame 4x6 on 8x10	4xFRAME (428)	\$24.99
Puzzle 25 pc 11x14	PUZZLE25 (479)	\$19.99
Puzzle 63 pc 8x10	PUZZLE63 (336)	\$24.99
Puzzle 130 pc 11x14	PUZZLE130 (399)	\$29.99
Puzzle 252 pc 11x14	PUZZLE252 (498)	\$34.99
Slate 5x5	SLATE (277)	\$34.99
Slate 5x7	SLATE (277)	\$39.99
Slate 7x7	SLATE (277)	\$44.99
Tile 4x4 Ceramic	TILE (212)	\$4.99
Tile 6x6 Ceramic	TILE (212)	\$9.99
Tile 8x8 Ceramic	TILE (212)	\$19.99
Tin 5x7	TIN (381)	\$14.99
Tumbled Stone 4x4	TSTONE (406)	\$9.99
Tumbled Stone 6x6	TSTONE (406)	\$14.99
Metal Magnets	METMAG (422)	\$0.50 per sq/IN



Photo Button



Coasters with Slotted Holder



Puzzle



Mousepad

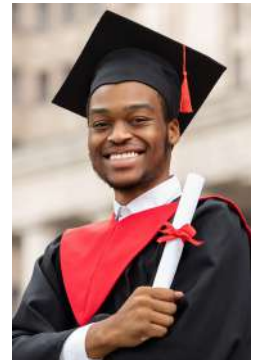
# Studio Services

Smile Club saves 10%

We provide quick, walk-in services. To book an appointment, please call our store. Studio space must be set up ahead of time and not all locations have full availability.

## Headshots

Service	Price
Headshot	\$99.99
Additional Pose/Person	\$25.00



Includes one sitting with 5 shots for 1 person. Background choices are white, grey or black. Select your favorite pose that we will adjust color, contrast and remove blemishes. Your finished image will be put on a USB flash Drive. Final product will be available in 2 days. Extra poses are available at \$25 per pose and includes 5 shots. Customer will select one pose that we will adjust color, contrast and remove blemishes.

## Passports, Visas, & ID Photos

Service	Code	Price
U.S. Passport	PP (26707)	\$16.99
International Passport	IIPP (89703)	\$35.00
Extra Copy (Print or Digital)	PP2 (437)	\$6.99



Our studio is equipped to print passport photos. We keep up to date on passport specifications, and have a program that outputs the correct head ratios needed for passport applications. We are able to do most countries, and if your photo is rejected, we will redo it for free.

Additional charges may apply for countries requiring a colored background.



# Smile Club Benefits

---

More Club Benefits  
More Club Discounts

More Rewards for  
Smile Club Members!



## DISCOUNTS AND BENEFITS FOR PRINTING

- Half-price 4x6 prints on Tuesday at our photo kiosks
- 25% off 4x6 prints or a FREE second set of prints with developing
- 25% off film developing
- 25% off a CD with your order at time of processing
- FREE index print for easily identifying a batch of prints at a glance from film
- Print from wherever your photos are: [www.mcprintlab.com](http://www.mcprintlab.com)
- 10% off Scanning and bulk archiving services
- 10% off Custom Stationery and announcements.

## ADDITIONAL SAVINGS ON OUR MOST POPULAR SERVICES

- 10% off Big paper prints
- 10% off Canvas and Metal Prints
- 10% off Custom Framing
- 10% off Custom photo gifts, mugs & novelties
- 10% off Video, DVD and BluRay Services
- 10% off E-6 Slide Processing
- 20% off Ready-Made Picture Frames & Mats
- 20% off All Photo Albums & Scrap booking supplies

ONE YEAR MEMBERSHIP ONLY **\$24<sup>99</sup>**

RENEWAL ONLY **\$19<sup>99</sup>**

WITH STUDENT ID **\$12<sup>50</sup>**

**MIKE'S**  
CAMERA  
*picturize your life!*





November 2025 Edition

**1. Boulder**

2500 Pearl Street  
Boulder, CO 80302  
Phone: (303) 443-1715

**2. Lone Tree**

9197 East Westview Road  
Lone Tree, CO 80124  
Phone: (303) 708-9655

**4. Denver**

1550 S. Colorado Blvd. Unit 109  
Denver, CO 80222  
Phone: (303) 733-2121

**10. Wheat Ridge**

3450 Youngfield Street  
Wheat Ridge, CO 80033  
Phone: (303) 424-0430

**13. Colorado Springs**

5420 N. Academy Blvd.  
Colorado Springs, CO 80918  
Phone: (719) 597-1575

**22. Menlo Park**

715 Santa Cruz Avenue  
Menlo Park, CA 94025  
Phone: (650) 323-7701

**23. Dublin**

7192 Regional Street  
Dublin, CA 94568  
Phone: (925) 829-3670

**24. Sacramento**

2200 J Street  
Sacramento, CA 95816  
Phone: (916) 444-6080

**25. Pleasant Hill**

2170 Contra Costa Blvd.  
Pleasant Hill, CA 94523  
Phone: (925) 827-1571

