



## Fleet for Pest Control



Get better control of your workforce. Deliver better customer service. Increasing the level of safety your technicians use when driving, Azuga Fleet is a powerful solution used by pest control companies large and small to improve their operations and their bottom line.



### Managers love Azuga

Azuga Fleet is incredibly easy to use—just plug it in. No installation costs, no downtime. Data pours into the secure management portal, giving instant insight and reporting that's easy to read and easy to use. Customers say it's the most user friendly portal they've ever used.



### Technicians love Azuga

Azuga Fleet lets you move from "gotcha" to "great job!" Unlike other fleet tracking solutions and safety programs, which are punitive, our unique approach to Driver Rewards gets technicians engaged and motivated to drive safely and win. And when they compete, you win.



### You'll love Azuga!

You'll manage a safer, less costly and more efficient fleet. No gotchas, low up-front costs, no punishing contracts or termination fees. For one price you get it all: data and reports for control and savings, driver safety scores and rewards, vehicle maintenance and much more.

"We got our fleet up and running on Azuga in a single day, and their team gave great support in configuring the service. I get one simple report in my email, and all of our management staff stays updated on their drivers"

*Director of Purchasing & Quality, McCauley Services*

"Azuga's is different. It gives us a new way to drive our meetings and coach techs to improve safety"

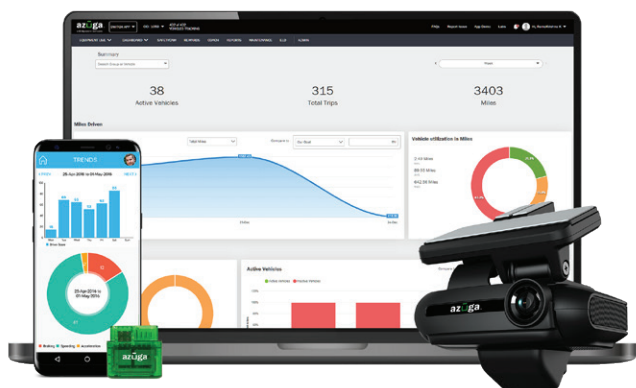
*President, Enviropest*

"Azuga helps me understand where my guys are and to check that the job is getting done and that the team is doing what they are supposed to be doing."

*Co-Founder, Environmental Pest Control*

"We've pulled fuel costs down by 25% by controlling excessive idling. We're controlling hard stops and rapid starts, which makes us much safer."

*VP Operations, Hired Gun Weed and Pest Control*



© 2025 Azuga, Inc. All rights reserved.

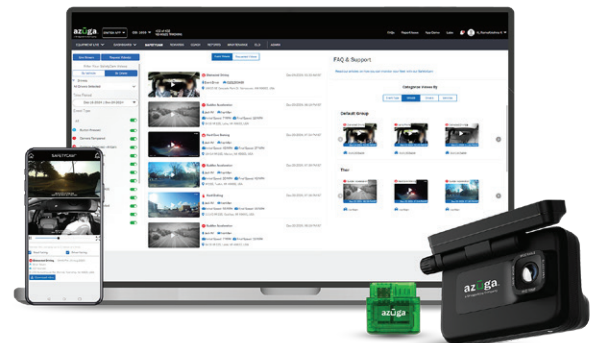
(888)-777-9718 [www.azuga.com](http://www.azuga.com)

## Protect your Drivers

- Monitor and alert risky distracted driving behaviors
- Reward safe and efficient drivers
- Relevant driver coaching with real video examples
- Build mutual trust

## Protect Your Business

- Reduce Insurance premiums and accidents
- Protect your business against nuclear frivolous lawsuits
- Keep your employees safe
- Virtual eye-witness at every scene



## Features and Capabilities for Larger Fleets

For customers with large fleets, Azuga offers features and capabilities that give management the data and control needed to manage fleet and service operations across a large operation and multiple locations.

- Large account features: hierarchical groupings (location, groups, vehicle types); role-based permissions; and visual clusters on the live map for concentrations of vehicles in locations
- A rich set APIs for integration, pre-built integrations with fuel card and fleet management partners, and an engineering team to assist with integration and customization.
- Customer Success team is an extension of your fleet operations. From getting involved on day one to quarterly business reviews, the Customer Success team ensures you are operating safely and efficiently.
- Azuga's Data Science team is available to help analyze the immense data set captured through Azuga Fleet to generate new insights into safety, productivity, utilization, routing, and maintenance. Industry and time comparisons yield significant improvements.



## Leading Pest Control Companies Trust Azuga With Their Fleet







