

Topic 3g - Informal Settlement Mapping

Bradley Gram-Hansen, FDL Slides

Over Half of the World's Population Lives in Absolute Poverty



People live in **densely populated, unplanned and unstructured settlements**

This leads to huge **economic and social inequalities**

Global Slum Population 2025



Note: The numbers in the circle are in millions

Source: UN-Habitat and Frost & Sullivan analysis

Source: UN-Habitat and Frost & Sullivan Analysis



Our Goal

Enhancing Socio-economic Well Being





Case Study

Informal Settlements Addressed in the Study



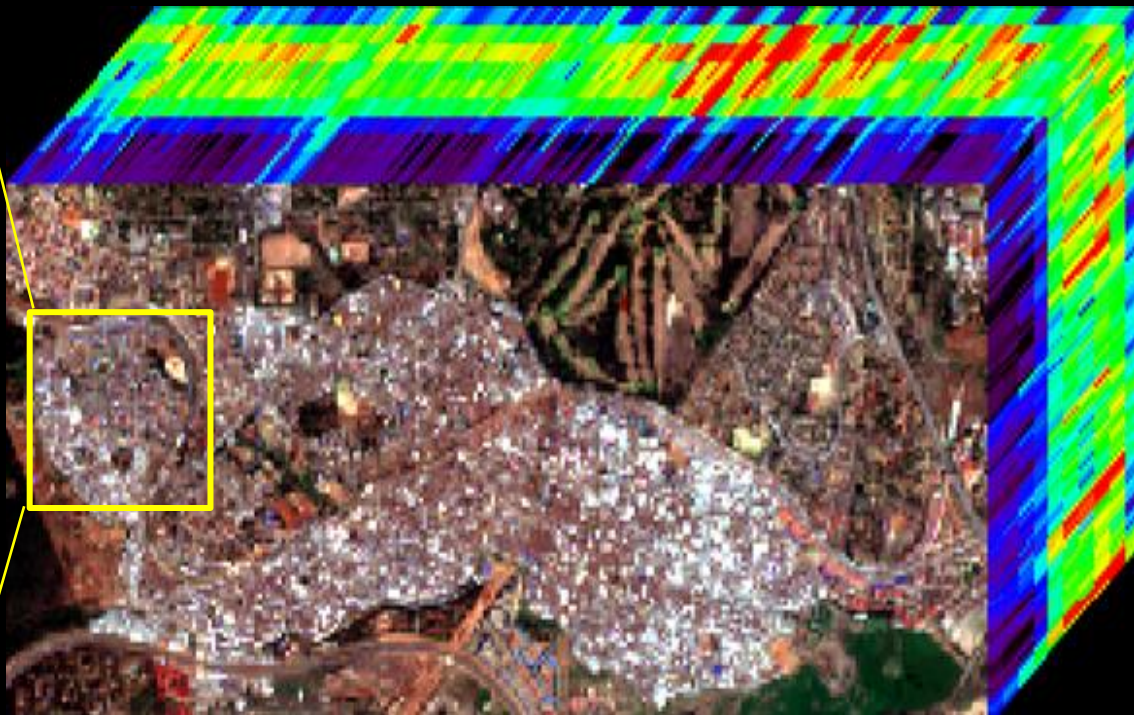


Data Used

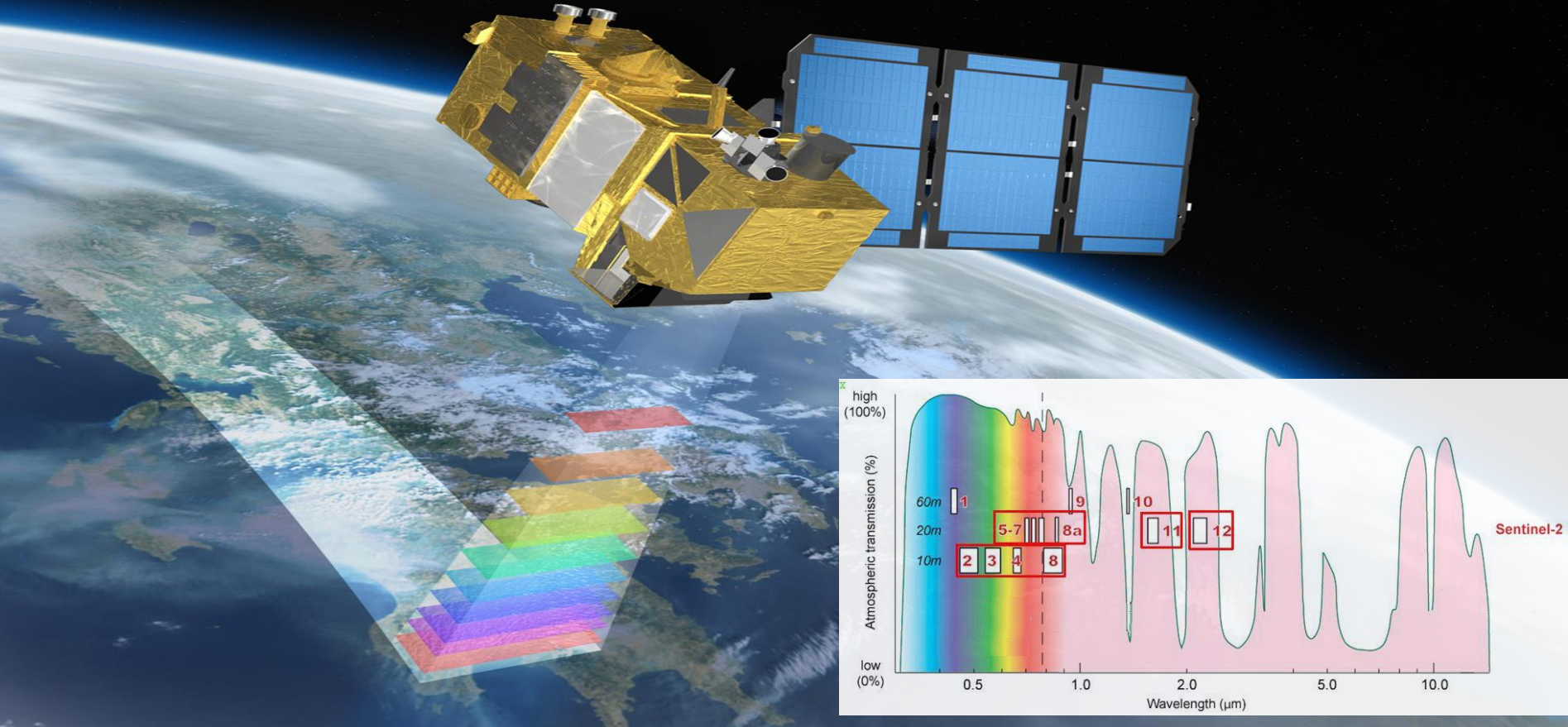
Different Types of Optical Images

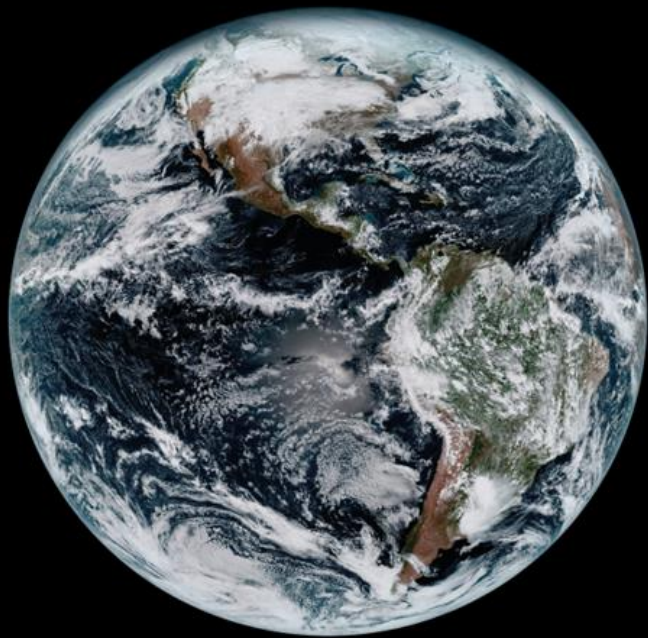


Sentinel 2 (10 & 20 m/pixel)



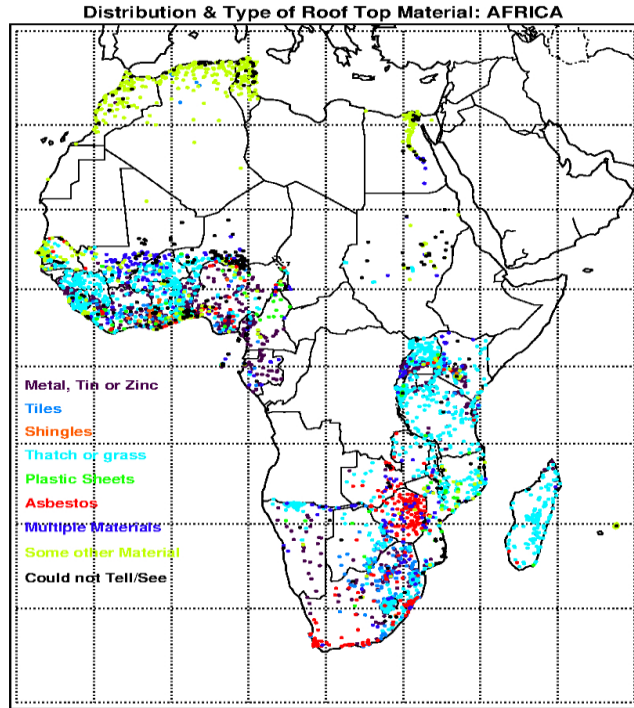
Sentinel 2: (10 & 20 meters/pixel) Multispectral Data





Ground Truth

Types of Roof Materials over Africa



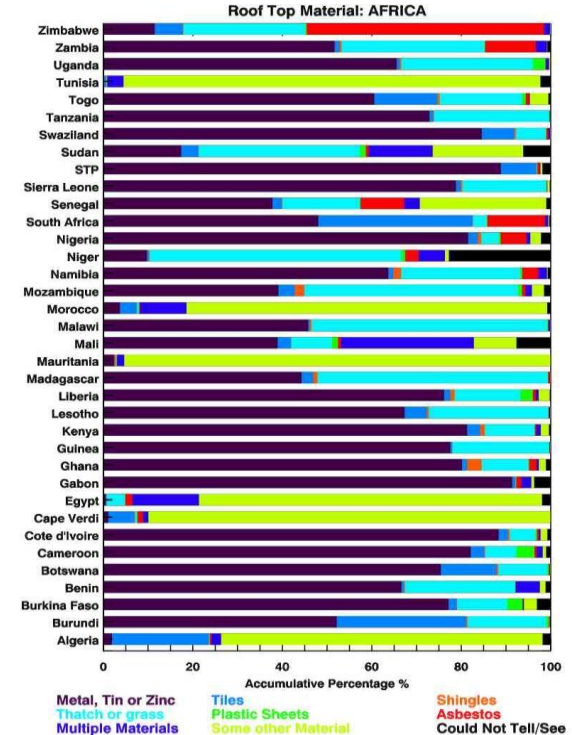
Source: Afrobarometer - AID data



Tin roof



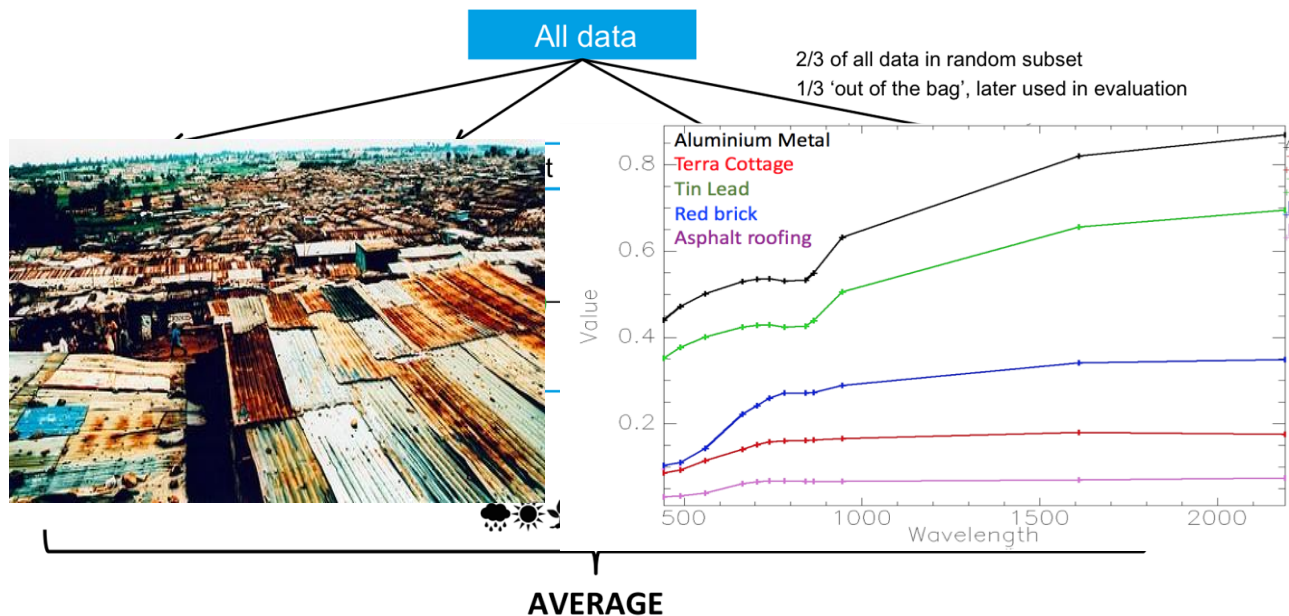
Thatch roof





The Spectral Model : How does it all work?

Canonical Correlation Forests



> find the set of predictor variables that produce the strongest classification model

Mapping Informal Settlements using Low-resolution Satellite Imagery (Gram-Hansen et al, AAAI 2019)

Take a big humanitarian problem + freely available, frequently updated low-res satellite imagery + interpretable Machine Learning = Generate maps of informal settlements for NGOs.

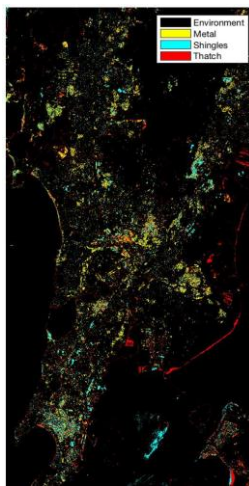
Mumbai Sentinel-2



Ground Truth



Prediction



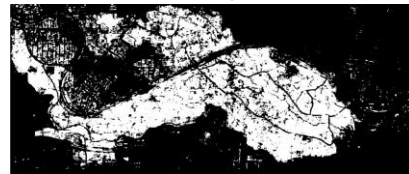
Sentinel-2
Kibera



Ground Truth



Prediction



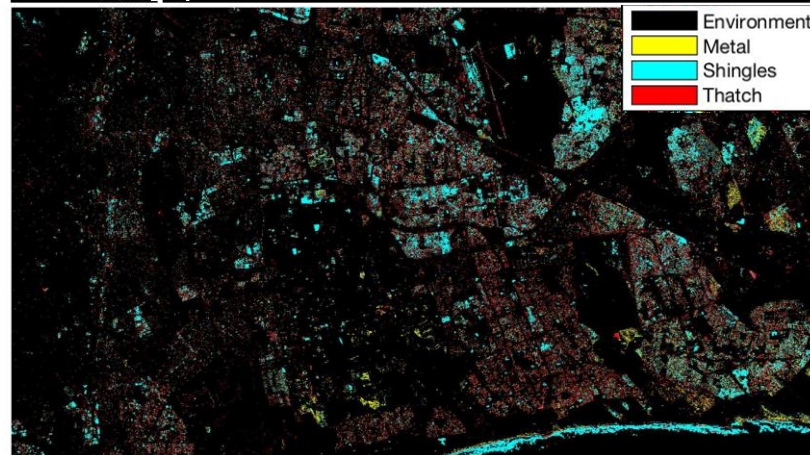
Sentinel-2



Capetown,
South Africa



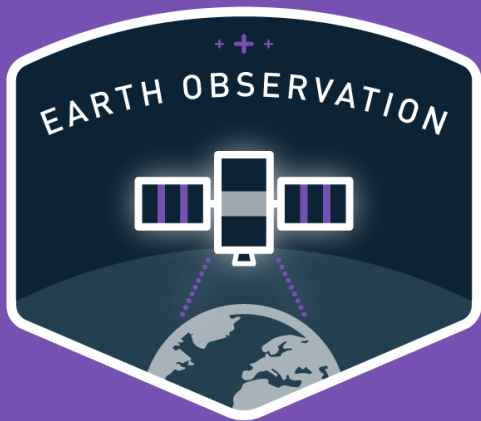
Ground Truth



Prediction

Thanks to our partners





Support well-being of people in informal settlements
