

DESCRIPTION

The Naru bar chair embodies the essence of simplicity, comfort, and refined craftsmanship. With its pure, flowing lines and well-balanced proportions, Naru offers an inviting seating experience that feels both natural and sophisticated. The softly contoured seat and ergonomic shape ensure lasting comfort, while the solid wood structure, crafted with Artisan’s renowned expertise, adds warmth, strength, and visual lightness. Every curve and connection is carefully considered, creating a piece that seamlessly blends functionality, elegance, and artisanal mastery, perfect for both relaxed and refined environments.

PRODUCTION PROCESS

The bar chair parts are made of solid wood pieces of the same length but different widths, with precisely crafted joints on CNC machines. Each piece is chosen through careful matching of wood colors and structures. The upholstered seats are covered with HR foam and upholstery for superior comfort. Certain chair collections are produced using a special wood bending technology. The technical parameters of hand-assembled chairs comply with standard requirements. Final sanding is done manually with fine-grained sandpaper, and various types of finishes enable a wide selection of the chair’s final appearance.

PRODUCT TYPE

Bar chair

USAGE

Indoor

DISMANTLING OPTION

No

GLIDERS

Standard gliders

STOCK ITEMS

No

COUNTRY OF ORIGIN

BiH

NOTE

The listed weights are approximate; the weight of each piece depends on the type of wood.

DIMENSIONS

Height: 65 cm/ 25.59 in
Width: 47 cm/ 18.5 in
Depth: 35 cm/ 13.77 in
Seat height: 65 cm/ 25.59 in
Seat size: 42x31cm / 16.54x12.20 in

PACKAGING

Stretch wrap + five-layer cardboard box.
1 piece

PACKAGING DIMENSIONS

Height: 70 cm/ 27.55 in
Width: 45 cm/ 17.71 in
Depth: 45cm/ 17.71 in

WEIGHT

Weight: 5 kg
Packaging: 1.5 kg

MATERIALS

Oak, American and European walnut, elm, cherry, maple, ash

WOOD FINISHES

Available in a variety of natural oil and soap finishes. Discover more information artisan.ba/materials

UPHOLSTERY

Available in a variety of leathers and fabrics. More information at artisan.ba/materials

FOOTREST

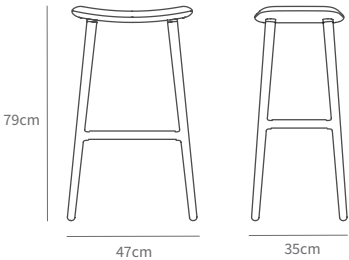
Wooden footrest.
Inox, brass and powder-coated steel decoration on the footrest is possible on request.

DECORATION RINGS FINISHES

Inox, Brass, Powder-coated steel rings on request

CLEANING INSTRUCTIONS

Please download our material care & cleaning instructions through artisan.ba/materials



DESCRIPTION

The Naru bar chair embodies the essence of simplicity, comfort, and refined craftsmanship. With its pure, flowing lines and well-balanced proportions, Naru offers an inviting seating experience that feels both natural and sophisticated. The softly contoured seat and ergonomic shape ensure lasting comfort, while the solid wood structure, crafted with Artisan’s renowned expertise, adds warmth, strength, and visual lightness. Every curve and connection is carefully considered, creating a piece that seamlessly blends functionality, elegance, and artisanal mastery, perfect for both relaxed and refined environments.

PRODUCTION PROCESS

The bar chair parts are made of solid wood pieces of the same length but different widths, with precisely crafted joints on CNC machines. Each piece is chosen through careful matching of wood colors and structures. The upholstered seats are covered with HR foam and upholstery for superior comfort. Certain chair collections are produced using a special wood bending technology. The technical parameters of hand-assembled chairs comply with standard requirements. Final sanding is done manually with fine-grained sandpaper, and various types of finishes enable a wide selection of the chair’s final appearance.

PRODUCT TYPE

Bar chair

USAGE

Indoor

DISMANTLING OPTION

No

GLIDERS

Standard gliders

STOCK ITEMS

No

COUNTRY OF ORIGIN

BiH

NOTE

The listed weights are approximate; the weight of each piece depends on the type of wood.

DIMENSIONS

Height: 79 cm/ 31.1 in
Width: 47 cm/ 18.5 in
Depth: 35 cm/ 13.77 in
Seat height: 65 cm/ 25.59 in
Seat size: 42x31cm / 16.54x12.20 in

PACKAGING

Stretch wrap + five-layer cardboard box.
1 piece

PACKAGING DIMENSIONS

Height: 80 cm/ 31.49 in
Width: 45 cm/ 17.71 in
Depth: 45 cm/ 17.71 in

WEIGHT

Weight: 6 kg
Packaging: 1.5 kg

MATERIALS

Oak, American and European walnut, elm, cherry, maple, ash

WOOD FINISHES

Available in a variety of natural oil and soap finishes. Discover more information artisan.ba/materials

UPHOLSTERY

Available in a variety of leathers and fabrics. More information at artisan.ba/materials

FOOTREST

Wooden footrest.
Inox, brass and powder-coated steel decoration on the footrest is possible on request.

DECORATION RINGS FINISHES

Inox, Brass, Powder-coated steel rings on request

CLEANING INSTRUCTIONS

Please download our material care & cleaning instructions through artisan.ba/materials

AMERICAN WALNUT
A01 Natural soap



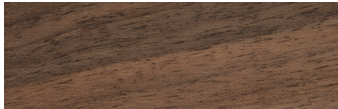
AMERICAN WALNUT
A03 Natural oil



EUROPEAN WALNUT
A01 Natural soap



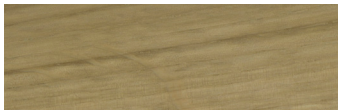
EUROPEAN WALNUT
A03 Natural oil



EUROPEAN WALNUT
A04 White oil



OAK
A01 Natural soap



OAK
A03 Natural oil



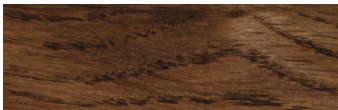
OAK
A3 Loba white oil



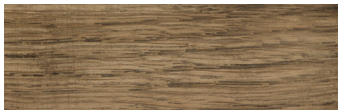
OAK
A04 White pigmented oil



OAK
Wenge oil



OAK
AR1 Jahorina pigment



OAK
Rubio black



ELM
A01 Natural soap



ELM
A03 Natural oil



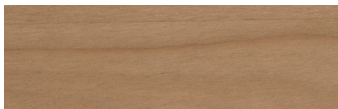
ELM
A04 White pigmented oil



ELM
AR1 Jahorina pigment



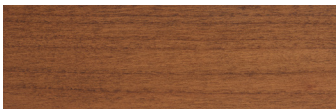
CHERRY
A01 Natural soap



CHERRY
A03 Natural oil



CHERRY
AR4 Dark oil



MAPLE
A01 Natural soap



MAPLE
A04 White pigmented oil



ASH
A04 White pigmented oil



AVAILABLE MATERIAL OPTIONS: COLORED WOOD, FABRIC AND LEATHER.
For more material options please check artisan.ba/materials