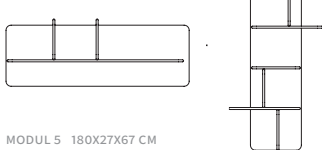
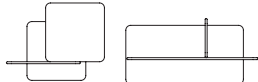


MODUL 1 70×27X 50 CM  
MODUL 2 100×27X60 CM



MODUL 5 180X27X67 CM  
MODUL 6 92X27X160 CM



MODUL 3 110X27X79 CM (WITH MIRROR)  
MODUL 4 135X27X67 CM

DESCRIPTION

The versatility of the shelving unit designed by Regular Company, which not only serves as a functional storage solution but can also double as a room divider. Defined by its dramatic use of line and impeccable balance, this solid creation seamlessly merges practicality with sculptural elegance, making it a standout addition to your space. Additionally, explore the option of wall modules available in various sizes to customise your storage and design needs.

PRODUCTION PROCESS

The Soft wall module combines precision and craftsmanship to highlight the natural beauty and strength of solid wood. It starts with selecting high-quality, sustainably sourced timber known for its rich grain and durability. The wood is carefully cut and shaped using advanced machinery, ensuring clean lines and smooth transitions. Expert joinery techniques are used to assemble the structure, providing stability and strength. Attention is given to aligning the wood grain for visual harmony across the panels. The surfaces are hand-sanded and finished with oil or protective treatments, enhancing texture and warmth. Subtle design details, like rounded edges or integrated joints, reflect the brand’s commitment to high-quality craftsmanship. The result is an elegant, functional shelf that blends timeless design with versatility.

PRODUCT TYPE

Wall module

USAGE

Indoor

DISMANTLING OPTION

No

GLIDERS

-

STOCK ITEMS

No

COUNTRY OF ORIGIN

BiH

NOTE

Other modifications and prices on request.  
The listed weights are approximate; the weight of each piece depends on its dimensions and the type of wood.

DIMENSIONS

Height: 50,60,67,79 cm/ 19.6,23.62,26.37,31.10 in  
Width: 70,100,92,110,135,180cm/27.55,39.37,36.22, 43.30,53.14, 70.86 in  
Depth: 27cm/10.6in  
Shelf thickness: 2cm / 0.78cm  
Additional colors on request.  
Non painted version available.

PACKAGING

Stretch wrap + five-layer cardboard box. 1 piece

PACKAGING DIMENSIONS

Height: 55-85 cm /21.65 - 33.46 in  
Width: 75-185 cm/29.52 - 72.83 in  
Depth: 32 cm/ 12.59 in

WEIGHT

Weight: 10-40 kg  
Packaging: 2-5 kg

MATERIALS

Oak, American and European walnut, elm, cherry, maple, ash

CONSTRUCTION

Solid wood

WOOD FINISHES

Available in a variety of natural oil and soap finishes. Discover more information [artisan.ba/materials](https://artisan.ba/materials)

CLEANING INSTRUCTIONS

Please download our material care & cleaning instructions through [artisan.ba/materials](https://artisan.ba/materials)

AMERICAN WALNUT  
A01 Natural soap



AMERICAN WALNUT  
A03 Natural oil



EUROPEAN WALNUT  
A01 Natural soap



EUROPEAN WALNUT  
A03 Natural oil



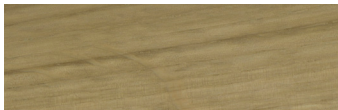
EUROPEAN WALNUT  
A04 White oil



EUROPEAN WALNUT WITH KNOTS  
A03 Natural oil



OAK  
A01 Natural soap



OAK  
A03 Natural oil



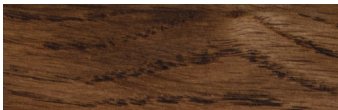
OAK  
A3 Loba white oil



OAK  
A04 White pigmented oil



OAK  
Wenge oil



OAK  
AR1 Jahorina pigment



OAK  
Rubio black



OAK WITH KNOTS  
A03 Natural oil



ELM  
A01 Natural soap



ELM  
A03 Natural oil



ELM  
A04 White pigmented oil



ELM  
AR1 Jahorina pigment



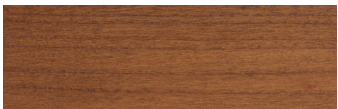
CHERRY  
A01 Natural soap



CHERRY  
A03 Natural oil



CHERRY  
AR4 Dark oil



MAPLE  
A01 Natural soap



MAPLE  
A04 White pigmented oil



ASH  
A04 White pigmented oil



AVAILABLE IN COLORED WOOD.  
For more material options please check [artisan.ba/materials](https://artisan.ba/materials)