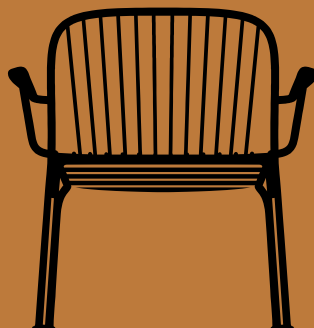
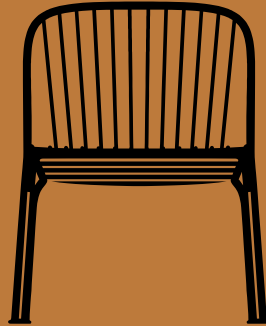


Thorvald SC100 & SC101
Space Copenhagen
2024





H: 75.5cm / 30in

W: 58.8cm / 23in, D: 75 / 30in
Seat H: 39.8cm / 16in

Thorvald^{SC100} Space Copenhagen 2024

Product description

Outdoor lounge chair

Environment

Outdoor

Material

Powder coated steel. This product has not been treated with any biocides.

Production process

The frame is bent and the back rest is die formed due to the curve. The wires are also bent and the pieces are then welded, polished, galvanised then powder coated

Finishes

Warm black, Bronze green & Ivory

Gliders

Plastic gliders

Dimensions

H: 75.5cm / 30in, W: 58.8cm / 23in, D: 75cm / 30in
Seating H: 39.8cm / 16in

Packaging dimensions

H: 65cm / 26in, W: 82.5cm / 32in,
D: 82.5cm / 32in

Colli quantity

1 pc (2 pcs per box)

Weight

7.8 kg / incl. packaging: 21 kg

Country of origin

PRC

Certifications



EU Ecolabel : DK/049/054

Strength, durability and safety testing

EN Level 2 (Seating)

EN Outdoor Furniture

Cleaning instructions

Please download our Material Care & Cleaning instructions through [_____](#)

→ Stock items

Warm black, Bronze green & Ivory

Related Products:



SC96

SC97

SC98

SC94

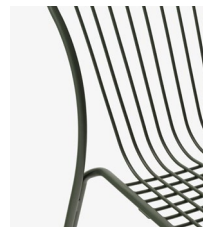
SC95

SC101

SC102



→ Warm Black



→ Bronze Green



→ Ivory

&Tradition[®]



H: 75.5cm / 30in
Armrest H: 61cm / 24in

W: 71.5cm / 28in, D: 75 / 30in
Seat H: 39.8cm / 16in

Thorvald^{SC101} Space Copenhagen 2024

Product description

Outdoor lounge chair with armrests

Environment

Outdoor

Material

Powder coated steel. This product has not been treated with any biocides.

Production process

The frame is bent and the back rest is die formed due to the curve. The wires are also bent and the pieces are then welded, polished, galvanised then powder coated. The armrest is punched into shape, then welded onto the tube

Finishes

Warm black, Bronze green & Ivory

Gliders

Plastic gliders

Dimensions

H: 75.5cm / 30in, W: 71.5cm / 28in,
D: 75cm / 30in
Seating H: 39.8cm / 16in
Armrest H: 61cm / 24in

Packaging dimensions

H: 74cm / 30in, W: 82.5cm / 32in,
D: 82.5cm / 32in

Colli quantity

1 pc (2 pcs per box)

Weight

9.2 kg / incl. packaging: 24.2 kg

Country of origin

PRC

Certifications



Strength, durability and safety testing

EN Level 2 (Seating)
EN Outdoor Furniture

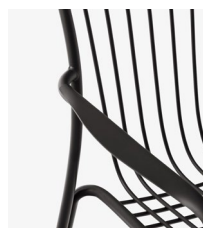
Cleaning instructions

Please download our Material Care & Cleaning instructions through [_____](#)

→ Stock items

Warm black, Bronze green & Ivory

Related Products:



→ Warm Black

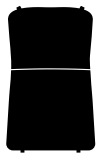


→ Bronze Green



→ Ivory

&Tradition[®]



W: 53cm / 21in
H: 3cm / 1in



W: 53cm / 21in
H: 3cm / 1in

Thorvald Seat Pad & Cushion ^{SC100 & SC101} Space Copenhagen 2024

Product category
Cushion & Seat Pad

Environment
Outdoor

Material
Heritage Papyrus: Water repellent & stain proof canvas made from 50% recycled acrylic, 47% acrylic, 3% polyester
Marquetry Bora: Water repellent & stain proof canvas made from 100% acrylic

Production process
Fast drying Foam and wadding is cut and put in to a cover

Finishes
Heritage papyrus
Marquetry Bora

Dimensions
Cushion:
D: 3cm / 1in, W: 53cm / 21in, D: 97cm / 38in
Seat Pad:
D: 3cm / 1in, W: 53cm / 21in, D: 53cm / 21in

Packaging dimensions
Cushion:
D: 10cm / 4in, W: 50cm / 20in, D: 53cm / 21in
Seat pad:
D: 4cm / 1in, W: 51cm / 20in, D: 52cm / 20in

Colli quantity
Cushion 9 pcs
Seat Pad 15 pcs

Weight
Cushion: 0.7kg / incl. packaging: 0.7kg
Seat pad: 0.35kg / incl. packaging: 0.35kg

Country of origin
Poland

Certifications



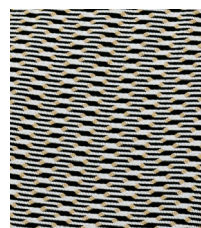
(fabric only)

Cleaning instructions
Please download our Material Care & Cleaning instructions through [_____](#)

→ **Stock items**
Heritage Papyrus cushion and seat pad
Marquetry Bora cushion and seat pad
Heritage Char cushion and seat pad



→ Heritage Papyrus
Cushion & Seat Pad



→ Marquetry Bora
Cushion & Seat Pad



→ Heritage Char
Cushion & Seat Pad

Recycling & Disassembly

Thorvald SC100 & SC101

RECYCLING

The Thorvald chair is built to last, and we hope that your Thorvald chair will serve you for many years. Thorvald is made from steel. All steel parts should be delivered to a suitable recycling station.

SPARE PARTS

To purchase spare parts for your Thorvald chair, please write to our sales support team at sales@&tradition.com with your query.

5 YEAR WARRANTY

&Tradition provides a 5-year warranty with every Thorvald chair, which covers faults which were present at the time of purchase, or which have occurred as a result of a manufacturing defect. The warranty is valid from the date stated on the original invoice.

