



# Scala Flush Mount



---

## Technical Specifications

Materials	Glass, Wood, Steel
Product weight	185 lbs
Lead time	12 weeks
Integrated LED	25,245 lm / 2700 K / 285 W / 92+ CRI
Input Voltage	120 V, 240 V or 277 V
Dimmer	TRIAC, ELV or 0-10 V
Certifications	UL, ETL listed, damp-rated



---

## Notes

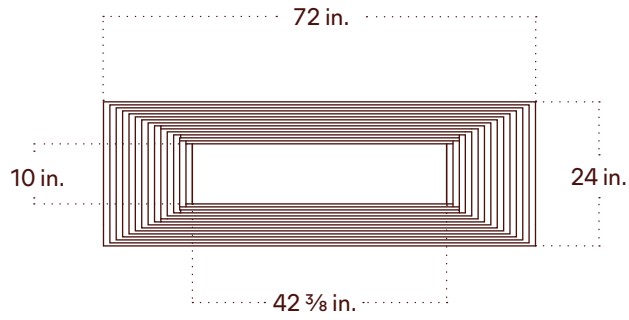
1. Universal canopy mounting is located at the center of the fixture. Additional anchor holes are available for added support.
2. This fixture has handmade elements and may exhibit variability within the same piece. These variations are inherent in the production process and are not to be considered as defects. We do our best to maintain a consistent product while honoring handmade craftsmanship.
3. Dimensions may vary within half an inch.
4. The LED lifetime is 50,000 hours.
5. The driver is included within the fixture.
6. This fixture is designed so the LED board can be replaced when it reaches its lifetime.

---

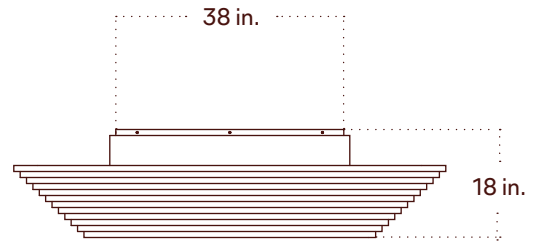
Updated

April 29, 2025

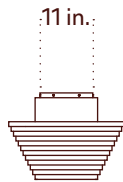
Bottom View



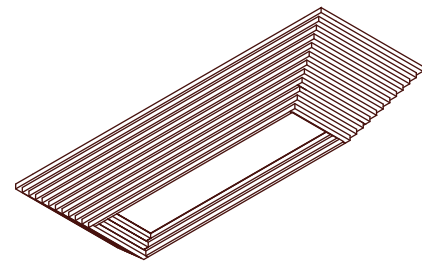
Front View



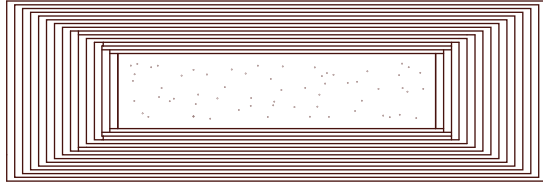
Side View



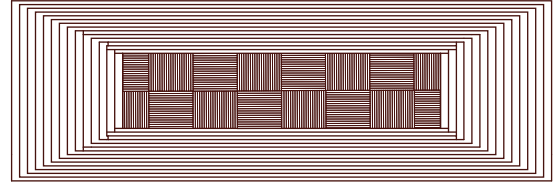
Isometric View



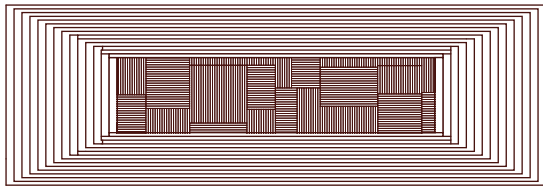
Front View



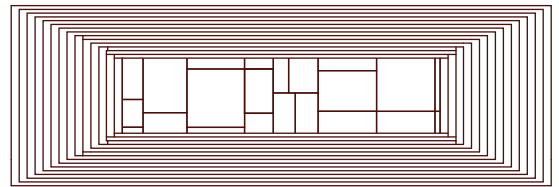
Powder



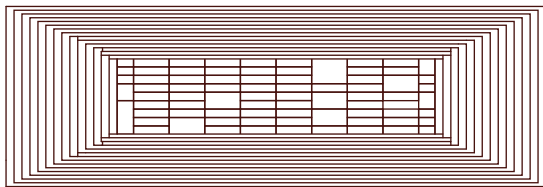
Basketweave



Irregular Basketweave



Patchwork



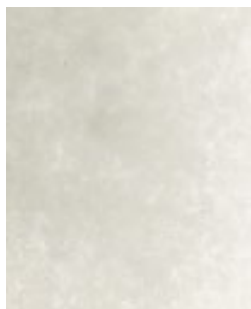
Bond

# Finish Options

Brass, glass, and ceramic samples made or finished by hand may exhibit variability. Available for purchase at

---

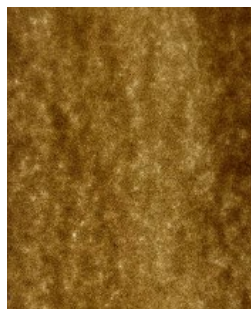
## Powder Glass



Cirrus



Moss



Umber



Plum

---

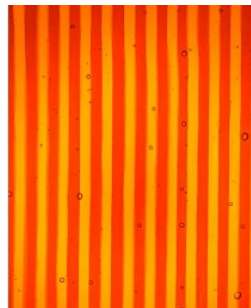
## Striped Glass



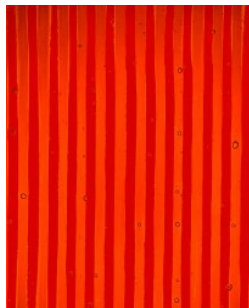
Vellum



Zinnia



Marigold



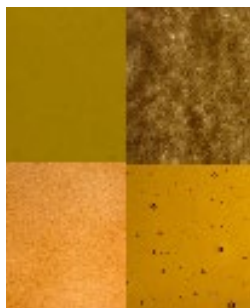
Garnet

---

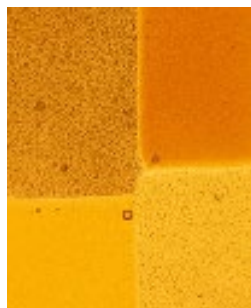
## Patterned Glass



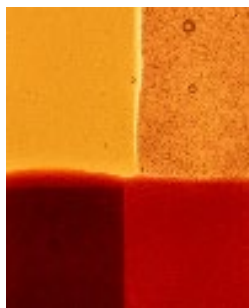
Alba



Algae



Harvest



Canyon

# Finish Options

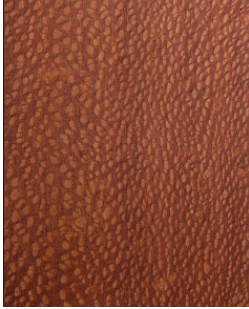
Brass, glass, and ceramic samples made or finished by hand may exhibit variability. Available for purchase at

---

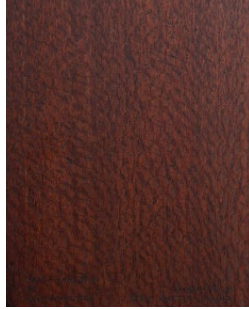
## Wood



Oak



Leopardwood



Darkened Leopardwood