

Mira Surface Mount, Small

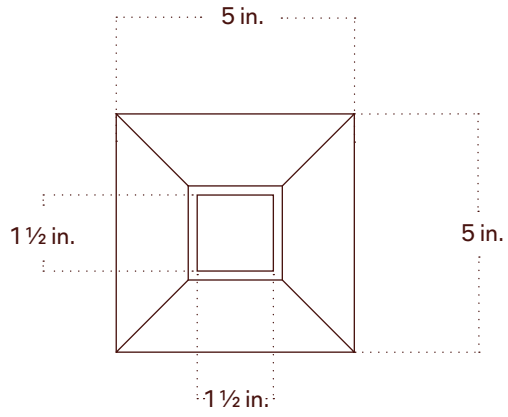


Technical Specifications	Materials	Glass, Wood, Steel
	Product weight	2 lbs
	Lead time	12 weeks
	Integrated LED	1,200 lm / 1800K -3000K / 12 W / CRI
	Input Voltage	120 V, 240 V or 277 V
	Dimmer	TRIAC, ELV or 0-10 V
	Certifications	UL, ETL listed, damp-rated, ADA compliant
		   

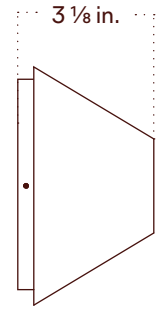
- | | |
|-------|---|
| Notes | <ol style="list-style-type: none">1. This fixture can be installed on a wall or ceiling.2. This fixture has handmade elements and may exhibit variability within the same piece. These variations are inherent in the production process and are not to be considered as defects. We do our best to maintain a consistent product while honoring handmade craftsmanship.3. Dimensions may vary within half an inch.4. The LED lifetime is 50,000 hours.5. The driver is included with the fixture and can be installed inside of the J-box or remotely.6. This fixture is designed so the LED board can be replaced when it reaches its lifetime.7. This fixture meets the requirements of the Americans with Disabilities Act (ADA) of |
|-------|---|

Updated	April 29, 2025
---------	----------------

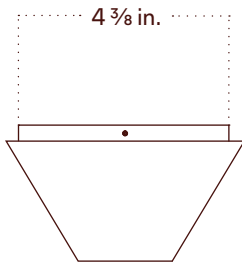
Front View



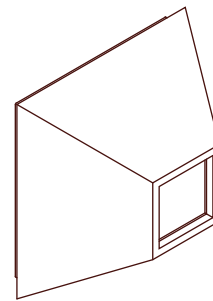
Side View



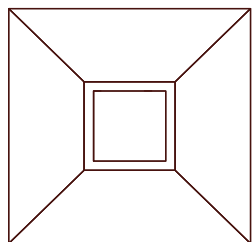
Front View: Ceiling Installation



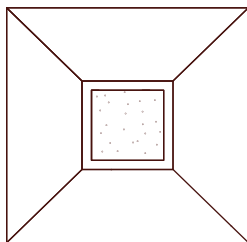
Isometric View



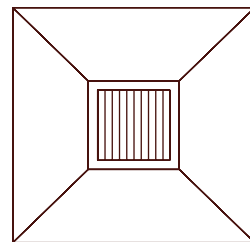
Front View



Solid



Powder



Stripe

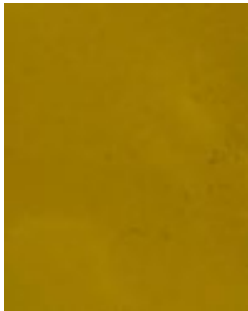
Finish Options

Brass, glass, and ceramic samples made or finished by hand may exhibit variability. Available for purchase at

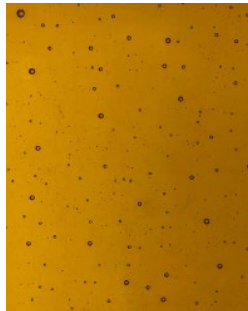
Solid Glass



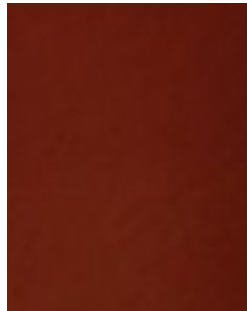
Almond



Olive

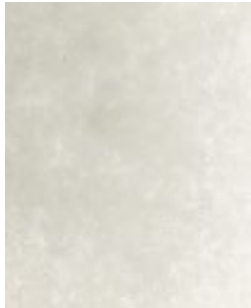


Pecan



Cherry

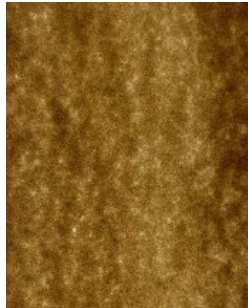
Powder Glass



Cirrus



Moss



Umber

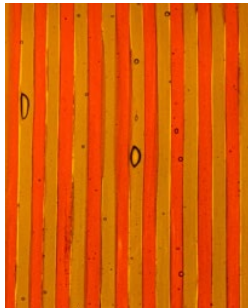


Plum

Striped Glass



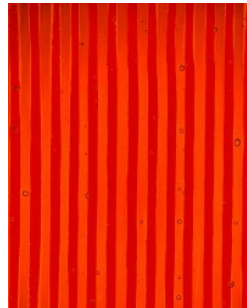
Vellum



Zinnia



Marigold



Garnet

Finish Options

Brass, glass, and ceramic samples made or finished by hand may exhibit variability. Available for purchase at

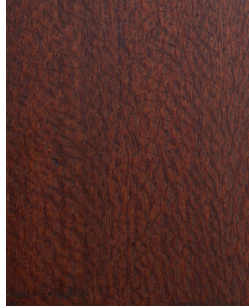
Wood



Oak



Leopardwood



Darkened Leopardwood