









KASTHALL

PRODUCT SPECIFICATION

VICHY



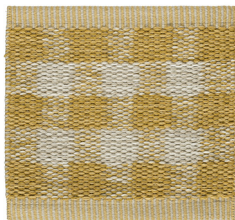
## PRODUCT SPECIFICATIONS

PRODUCT TYPE: Woven rug in pure wool	TOTAL THICKNESS: approx. 7 mm
WEFT MATERIAL: 100% wool	TOTAL WEIGHT: approx $\text{g/m}^2$
WARP MATERIAL: 100% linen	 Wear classification: (EN 14215) Class 22 Domestic general  Acoustics properties: Sound insulation approx. 24 dB  Acoustics properties: Sound absorption $\alpha_w$ 0,15  Suitable for Castor chair only with additional backing: (EN 1307) Occasional use  Luxury class: (EN 1307) LC 1  Reaction to fire classification: (EN 13501) CF-s1
SUGGESTED SIZES (CM): 85x240, 135x200, 165x240, 195x300, 240x350, 290x400, 340x450 CUSTOM MADE SIZES: Choose width between 70–600 cm and any length	

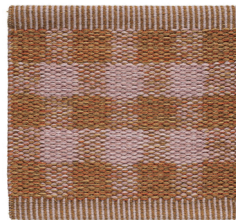
## COLORS



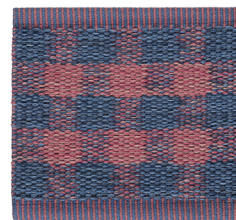
VANILLA COCONUT



QUINCE



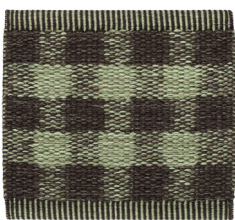
MANGO PEACH



RASPBERRY BLUE



CASSIS



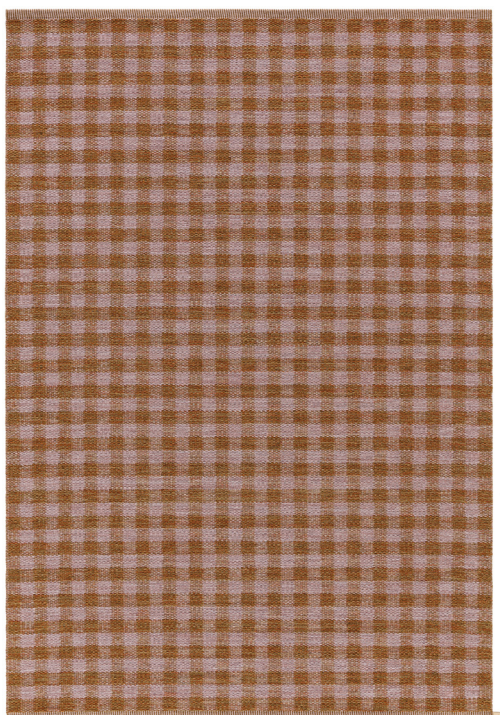
PISTACHIO



MINT CHOCOLATE



SLOE BERRY



Vichy is a woven rug in pure wool that captures the essence of playfulness and sophistication through the reimagined checkered Vichy pattern, also known as Gingham. The collection includes eight color options ranging from neutrals to bolder and more expressive hues. Each rug is a brushstroke on the canvas of Kasthall's rich heritage, showcasing the narrative of craftsmanship and dedication at the Kasthall Factory. Vichy is a timeless yet contemporary celebration of the classic checkered pattern, perfect for any modern living space.

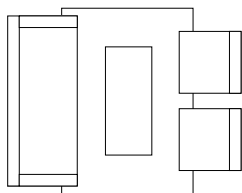
# CHOOSING A RUG

VICHY COLLECTION  
DESIGNED BY  
KASTHALL DESIGN STUDIO

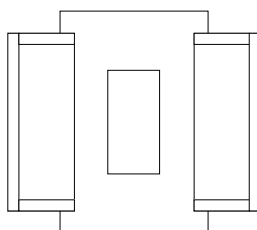
Choose the characteristics of the rug, its colour and design to suit the space in which it will be laid. If it is to be laid in a hall, for example, you may choose a type of rug that is more resistant to wear, and a colour that is a little darker and dirt-tolerant. Use a rug as a means of bringing together the rest of the interior. Decide whether you want to place a sofa on the rug or at its edge. If a rug is to be placed underneath a dining table, add at least 60 cm all round the table to allow space for pulling out the chairs. Hand tufted rugs are suitable for creating cosy environments with warm acoustics. Depending on the quality, hand tufted rugs can work equally well in domestic settings and public spaces. Ideal for use in living rooms, bedrooms and in lounge environments and hotel rooms.

## SIZE GUIDE RUGS

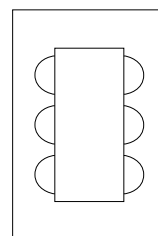
170x240 Couch 220x90, Coffee-table 140x60,  
Armchair 80x80



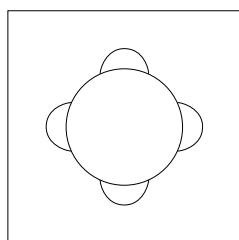
200x300 Couch 220x90, seat  
Coffee-table 140x60



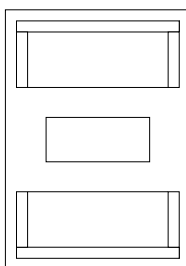
x300 Table 160, Chair 50



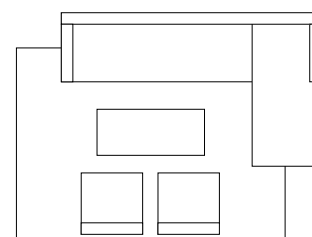
240x240 Table 120 Ø, Chair



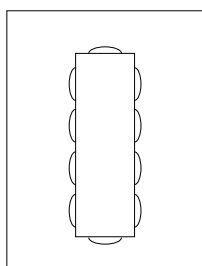
x350 Couch 220x90, Coffeetable 140x60



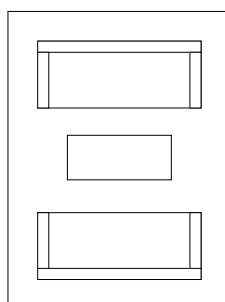
250x350 Couch 350x200, seat 90  
Coffee-table 140x60, Armchair 80x80



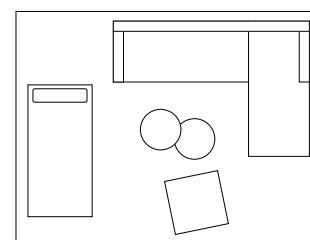
300x400 Table 90x280, Chair



x400 Couch 220x90, Coffeetable 140x60



350x450 Couch 300x200, Seat 90, Daybed 195x95  
Coffeetable 60 Ø, Ottoman 80x80



# CARE AND CLEANING

VICHY COLLECTION  
DESIGNED BY  
KASTHALL DESIGN STUDIO

## REGULAR CARE ADVICE

To further extend the lifetime of your rug, Kasthall recommends a regular maintenance so that the rug may retain its shape and appearance. If you have a light, single-colour rug you will need to care for it more often than a darker, patterned rug. Thorough vacuum cleaning is the best, most economical and environmentally friendly cleaning method. Beating or shaking a rug may damage the fibers. Note that it is quite normal for the rug to lose individual fibers when used, these are excess fibres and it does not affect the general quality of the rug. If you want to get rid of excess fibres faster, you can vacuum the rug daily for an initial period. It is most efficient to vacuum the rug one direction at a time. Remember that hand tufted rugs in linen are sensitive to water, so take particular care with the amount of water you use when removing stains.

## DEEP CLEANING ADVICE

We recommend that the rug is cleaned by a professional cleaner, using the extraction method on a flat surface. The quantity and temperature of the water will depend on the material and pile length. Good ventilation during the drying process is essential. Shrinkage will be about 3-5%. Kasthall's rugs are not to be machine-washed or dry-cleaned. At [read more about our materials, how to look after your rug and our stain guide.](#)

## OTHER INFORMATION

Depending on the materials used and the rug-making process, dimensions may vary by up to 5% so please state maximum or minimum dimensions when placing your order.

Note that all rugs from Kasthall are made from natural materials. Variations in colour and texture can therefore arise between batches of yarn and dye baths.

