

BRICK / CHAIR,
Paola Navone



GERVASONI
1882

GERVASONI

1882



BRICK / CHAIR,
Paola Navone

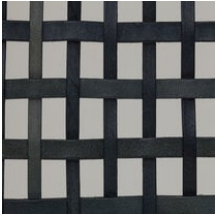
The Brick 23 chair without armrests has a structure in polished chromed steel rod. Light lines and low thicknesses are emphasised by the handwoven 8 mm rawhide strips, natural grey colour, riveted on the frame. Rawhide is a material obtained from the cow and its tension can change with time, especially in relation with humidity and change of temperature. This material is slightly stained (wax finish). Black polyethylene cap.

GERVASONI

1882

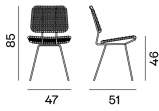
Materials

Weaving



Parchment Grey

Variants



Brick 23