

GRAY / ARMCHAIR,
Paola Navone



GERVASONI
1882

GERVASONI

1882



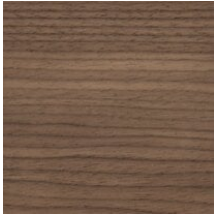
GRAY / ARMCHAIR,
Paola Navone

Gray 07 is a wooden armchair whose distinctive sign is an enveloping low backrest in the shape of a semicircle made with slats. The solid wood legs intersect, forming a cross. Solid oak frame, stained with acrylic base coat and acrylic transparent mat semi-open pore top coat, lacquered, bleached finishing, or solid American walnut. Seat cushion made of polyurethane foam and back cushions in dacron and down.

GRAY / ARMCHAIR, Paola Navone

Materials

Frame



American walnut



Oak Black



Oak Bleached oak



Oak Blue Ocean



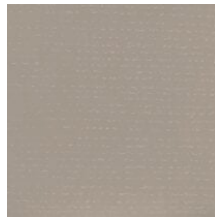
Oak Blueberry



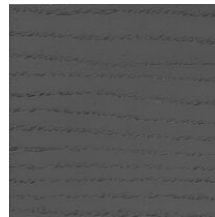
Oak Date



Oak Dove-grey



Oak Ginger

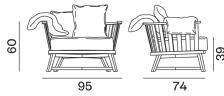


Oak Grey



Oak White

Variants



Gray 07