

NEXT / ROUND TABLE,
Paola Navone



GERVASONI

1882

GERVASONI

1882



NEXT / ROUND TABLE,
Paola Navone

Tables with concrete GFRC (Glass Fiber Reinforced Concrete). These are handcraft made products and due to this reason can vary in colour and dimensions, depending on their manufacture which is not industrial. Nylon feet. Top in white Carrara marble. Frame in painted iron, wood top support stained with acrylic base coat and acrylic grey finishing top coat.

The tops are finished with protective coatings, that never make the surface impervious, but are useful to slow down absorption of liquids. Cleaning: use water and a neutral detergent on the surface. Avoid direct contact with aggressive chemicals substances, solvents, ammonia, inks, oily soaps, lemon, wine, coffee. In case of contact, rinse the surface immediately and thoroughly. GFRC Concrete (Glass Fiber-Reinforced Concrete): A mixture of cement and glass fibre. Thanks to the low water/cement ratio and the presence of glass fibres, the final product is characterised by unique strength and increased durability. The surface treatment is classified A+ according to the French VOC (Volatile Organic Compounds) standard. Depending on the material and the natural drying process, micro-surfacing or micro-cracks may occur, which do not affect the technical characteristics. The material effect obtained after drying the concrete is always different and makes each item unique. White Carrara marble: A naturally compact material, wear and tear resistant, suitable for

GERVASONI

1882

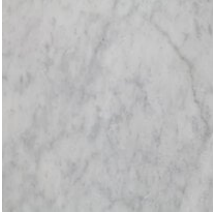
dining purposes, Carrara marble is treated with a clear matt protective impregnating agent. The presence of micro holes or imperfections is to be considered an intrinsic characteristic of the natural product, claims are not accepted.

GERVASONI

1882

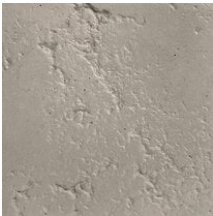
Materials

Top



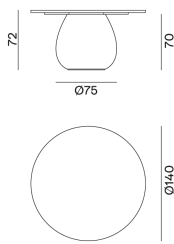
white Carrara marble

Base

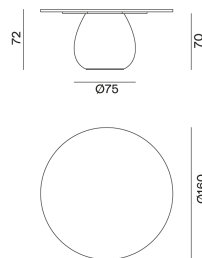


Concrete GFRC Matt grey

Variants



Next 232



Next 236