

LED Troffer Light



This troffer is field-adjustable, and can be programmed with a CCT of 3000K, 3500K, 4000K, 5000K, 5700K, 6000K, 6500K, eliminating the need to stock multiple color temperatures.

Ideal use for office spaces , walkways, schools/campuses, shopping centers, hospitality and



Catalog Number	Description	Lumens	Watts	CCT	Voltage
SZ-TR14-A40W-CCT	LED Troffer - 1' x 4'	5200 Lm	Adjustable 40 W Max	Adjustable 3500K - 6500K	120V - 277V
SZ-TR22-40W5-ACP	LED Troffer - 2' x 2'	5200 Lm	Adjustable 40 W Max	Adjustable 3000K - 6500K	120V - 277V
SZ-TR24-50W5-ACP	LED Troffer - 2' x 4'	6500 Lm	Adjustable 50 W Max	Adjustable 3000K - 6500K	120V - 277V

ORDERING GUIDE

Example: SZ-TR22-40W5-ACP

Company Code	Fixture Type	Size	Wattage	Voltage	Sensor (optional)	CCT Kelvin
<input type="text"/>	<input type="text"/>	<input type="text"/>	<input type="text"/>	<input type="text"/>	<input type="text"/>	<input type="text"/>
SZ Company Name	TR Troffer	14 1' x 4' 22 2' x 2' 24 2' x 4'	A40W A50W 40W5 50W5	Blank 120-277V	Blank Without Photocell/Sensor S Sensor base (option)	CCT or ACP Adjustable CCT and Power 40W: 15/20/25/30/40W or 20/25/30/35/40W 3500/4000K/5000K/5700/6500K or 3000/3500/4000/5000/6000K 50W: 25/30/35/40/50W or 25/30/40/45/50W 3500/4000K/5000K/5700/6500K or 3000/3500/4000/5000/6000K

LED Troffer Light

Specifications

CONSTRUCTION

Constructed of one-piece ribbed unitized housing and corners that interlock, preventing damage to luminaire. All sides and corners are turned in and hemmed, removing sharp edges for safe handling and installation.

ELECTRICAL

Luminaire is built with the highest quality 120-277VAC drivers.

OPTICAL SYSTEM

Designed to reduce glare and improve light distribution through precision formed

Operating Temperature

Suitable for use in -20° C to 45° C (-4° F to 113° F).

Efficacy

130 lumens per watt.

DIMMING

0-10V dimmable standard.

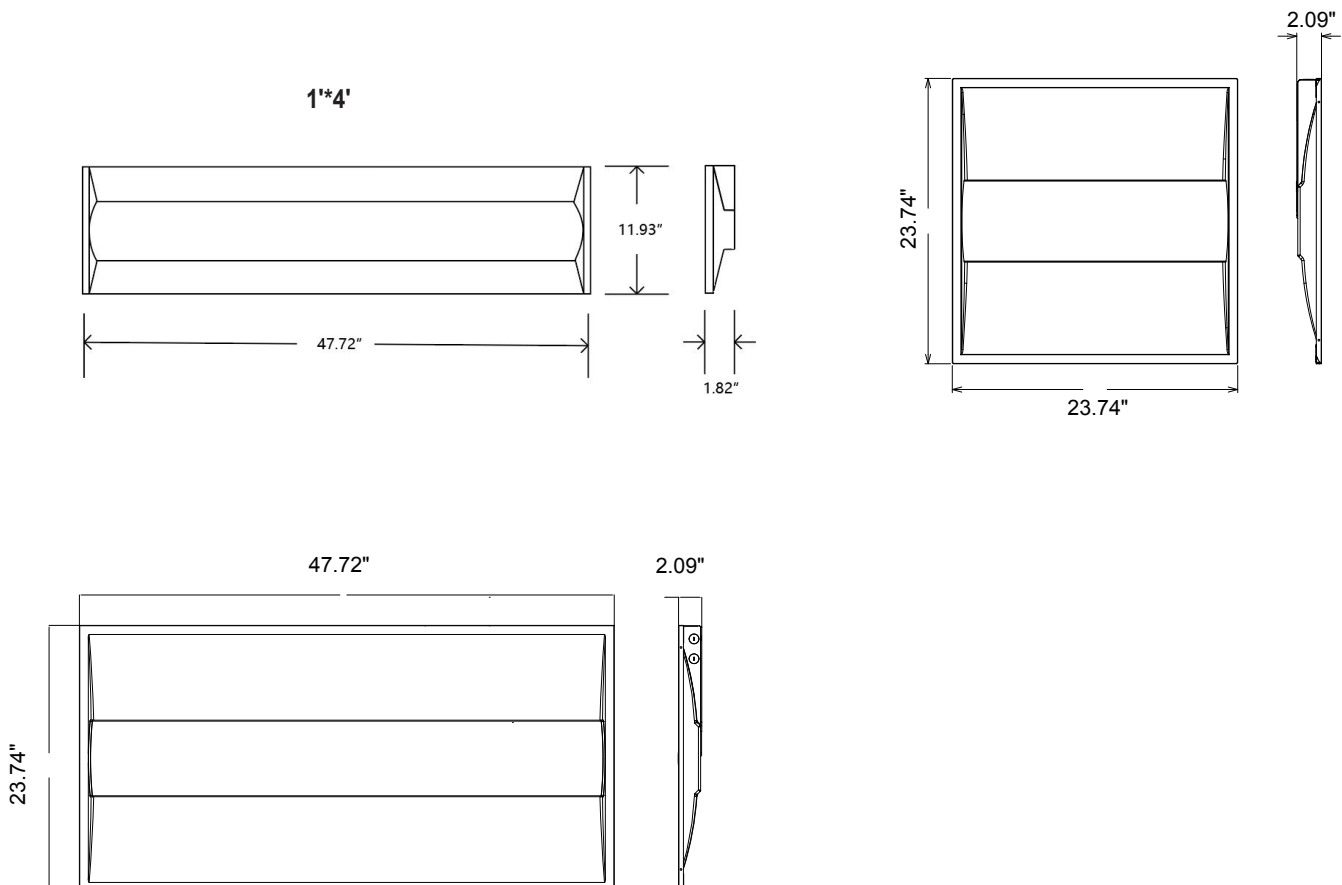
Certifications

ETL Listed, FCC, DLC 5.1.

WARRANTY

5 Years Limited Warranty.

Dimensions



LED Troffer Light

Accessories (Optional):

1. Emergency Driver: 8W or 15W, Recharge time: ≥ 24 Hrs, Discharge time :>90minutes.
2. Sensor: PIR Sensor or Microwave Sensor.

Emergency Driver (Optional)

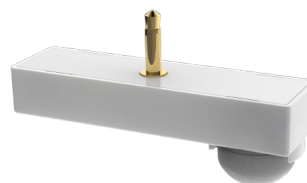


Sensor (Optional With Sensor Base)

Microwave Sensor
SZ-MS-M



PIR Sensor
SZ-MS-P



Wiring

