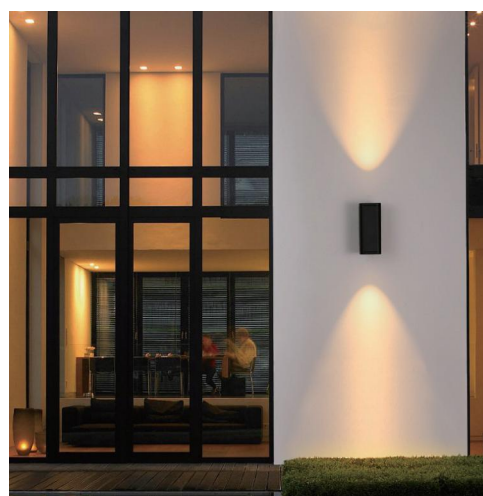


# LED Up Down Light



LED Up Downlight is Opti-select Cylinders offer 3 CCT, 3 wattages, 3 beam angles and 3 light modes in only one SKU. D2D photocell can automatically turn off at sunrise or during the day, and automatically light up at sunset or night. It is a highly efficient lighting solution that provides long-lasting and energy-saving. An innovative and flexible wall fixture ideal for facades, entryways and wall washing.



Catalog Number	Description	Angle	Lumens	Watts	CCT	Voltage
SZ-UPDN-10W3-ACP	LED Up Down light	Adjustable 25°, 40°, 60°	Up to 150Lm/W	Adjustable 6W/8W/10W	Adjustable 3000K/4000K/5000K	120-347V
SZ-UPDN-20W4-ACP	LED Up Down light	Adjustable 25°, 40°, 60°	Up to 150Lm/W	Adjustable 12W/16W/20W	Adjustable 3000K/4000K/5000K	120-347V
SZ-UPDN-36W6-ACP	LED Up Down light	Adjustable 25°, 40°, 60°	Up to 150Lm/W	Adjustable 21W/28W/36W	Adjustable 3000K/4000K/5000K	120-347V

## ORDERING GUIDE

Example: SZ-UPDN-20W4-ACP

Company Code	Fixture Type	Wattage	Size	Voltage	ACP	
<input type="text"/>	<input type="text"/>	<input type="text"/>	<input type="text"/>	<input type="text"/>	<input type="text"/>	
SZ Company Name	UPDN Up Down Light	10W 20W 36W	3 3" 4 4" 6 6"	Blank 120-347V	Adjustable CCT and Power 10W: 6/8/10W 3000K/4000K/5000K 20W: 12/16/20W 3000K/4000K/5000K 36W: 21/28/36W 3000K/4000K/5000K	

## Accessories (Optional)



# LED Up Down Light

## Specifications

### Housing

6063 Aluminum, Finish: Optional White, Black, Bronze.

### Mounting

Wall mount

### Electrical

Standard 120-347V

0-10V dimming standard with a dimming range of 100% to 10%. PF > 0.9. Surge Protection 4KV

### CCT and CRI

3 CCT Adjustable 3000K/4000K/5000K, CRI 80.

### Angle

3 Angle Adjustable 25°, 40°, 60°

### Operating Temperature

Suitable for use in -40° C to 45° C (-40° F to 113° F).

### Efficacy

Up to 150 lumens per watt.

### Lifespan

L70 > 50,000 Hours at 25° C (77° F).

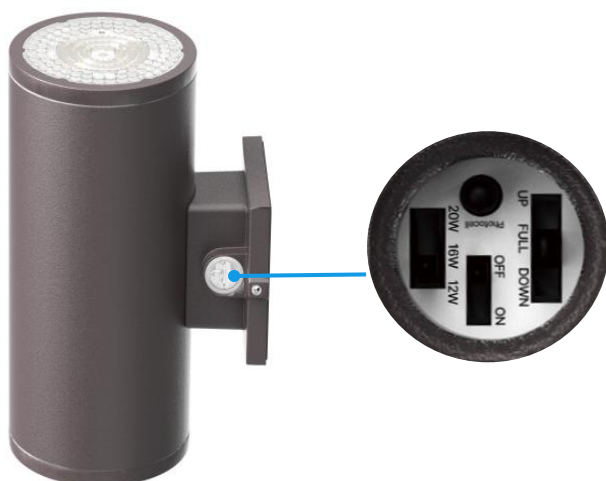
### Certifications

UL Listed for wet locations, FCC compliant, IP65 rated.

### Warranty

5-year limited warranty.

## Product Structure Characteristics:



### • Field-adjustable

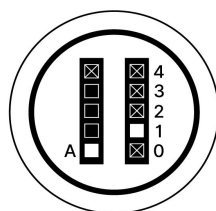
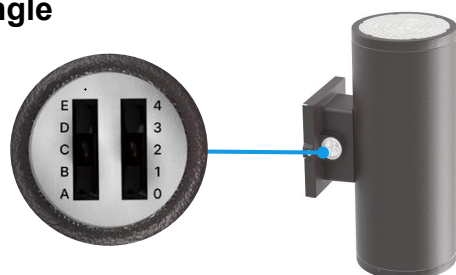
**Wattage** 3 Wattage selectable.

### • Photocell ON/OFF

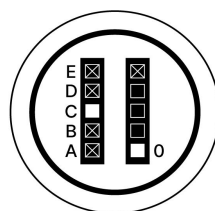
### • Light Direction

**Selection** Up, Full, Down

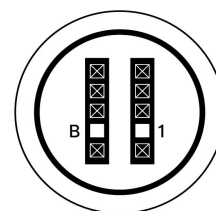
### • Field-adjustable CCT & Beam Angle



A+1: 3000K 40°  
A+2: 4000K 25°  
A+3: 5000K 25°  
A+4: 3000K 25°



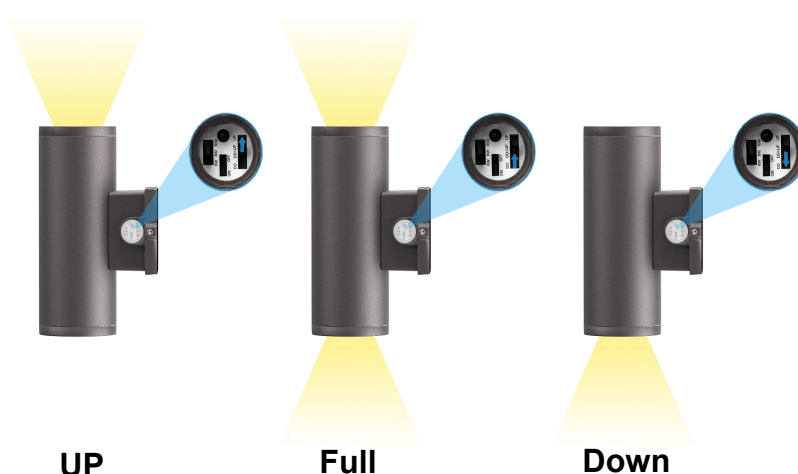
B+0: 5000K 40°  
C+0: 5000K 60°  
D+0: 4000K 60°  
E+0: 3000K 60°



B+1: 4000K 40°  
(Factory Default)

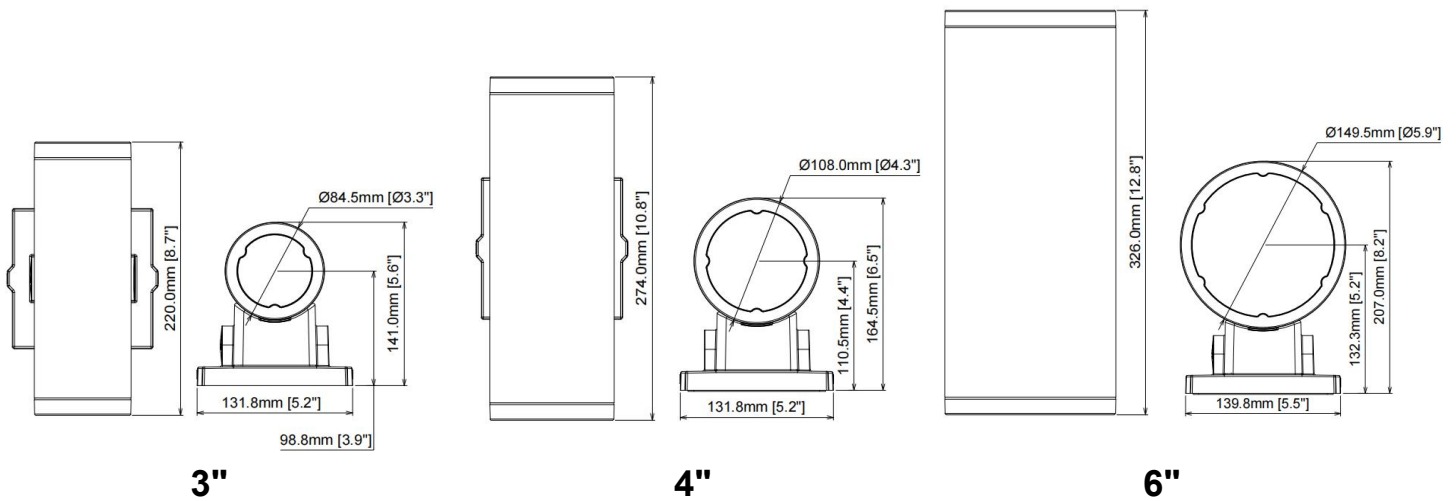
### • Light Direction

**Selection** Up, Full, Down

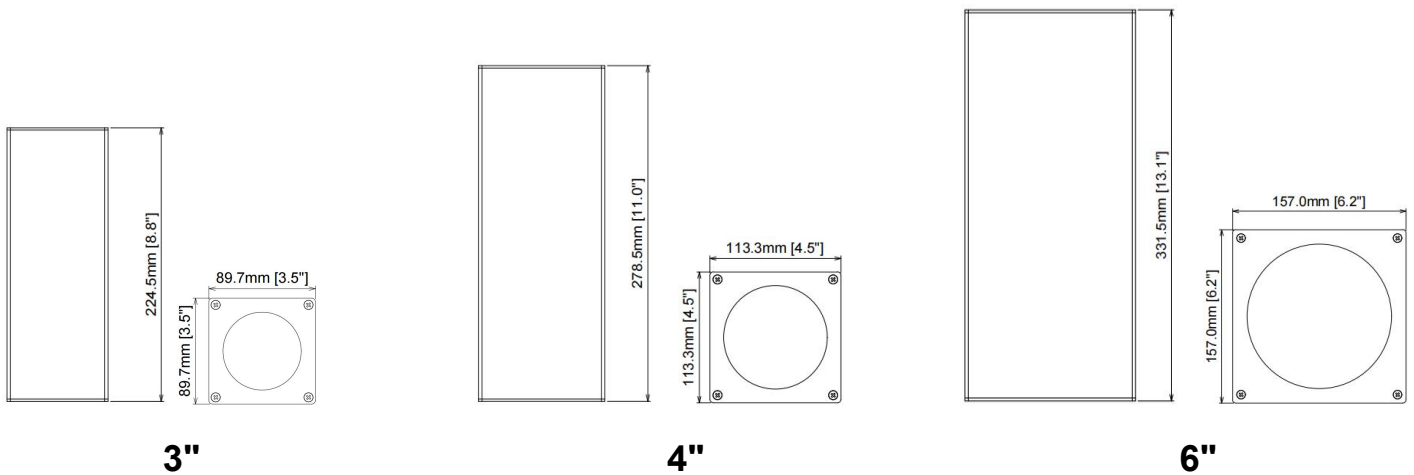


# LED Up Down Light

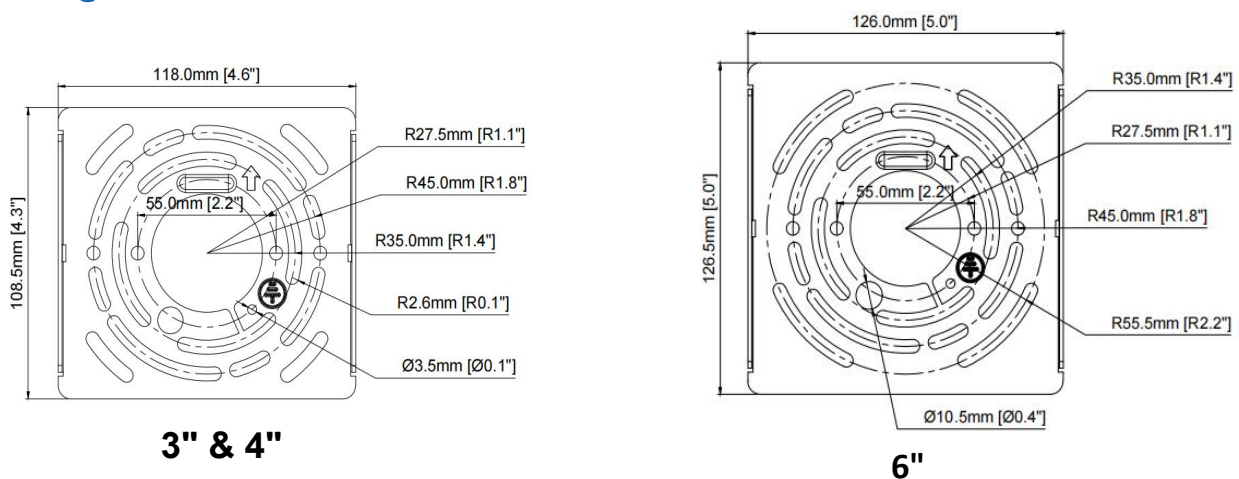
## Dimension:



## Square Shell Accessory Dimension:



## Mounting Plates Dimension:



## Packing/Weight:

Model	Outer box (L*W*H)	Qty/CTN (pcs)	N.W./pcs (kg)	G.W./CTN (kg)
SZ-UPDN-10W3-ACP	18.6"* 11.5"*13." 472*291*329mm	8	12.4	14.33
SZ-UPDN-20W4-ACP	16.9"*11.7"*14.8" 430*296*377mm	6	13.2	15.31
SZ-UPDN-36W6-ACP	13.7"*13.7"*18.2" 349*349*463mm	4	13.2	15.25