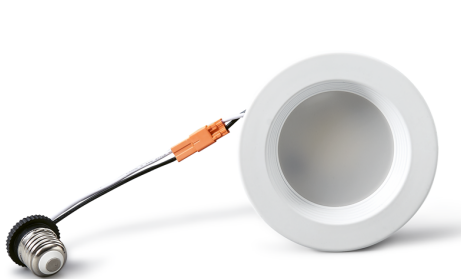


LED DownLight



4", 6" LED DownLight,

- Replaces legacy CFL, HID or incandescent down lights.
- UL certified.
- Provides comfortable diffused light with no dark spots.
- 5 CCT selectable version optional
- High efficiency LM80 SMD LEDs.
- Designed for 50,000 hours lifetime.



Catalog Number	Description	Lumens	Watts	CCT	Voltage
SZ-DL9W4-SP (DL)	LED Downlight 4"	800 Lm	9W	Adjustable 2700K - 5000K	120V
SZ-DL15W6-SP (DL)	LED Downlight 6"	1300 Lm	15W	Adjustable 2700K - 5000K	120V

ORDERING GUIDE

Example: SZ-DL15W6-SP (DL)

Company Code <input type="text"/>	Fixture Type <input type="text"/>	Wattage <input type="text"/>	Size <input type="text"/>	SP (DL) <input type="text"/>	CCT <input type="text"/>
SZ Company Name	DL Downlight Series	9W 15W	4 4" 6 6"	Downlight Downlight	CCT Adjustable CCT 2700K/3000K/3500K/4000K/5000K

LED DownLight

Specifications

CONSTRUCTION

Aluminum housing with spring action clips.

Operating Temperature

Suitable for use in -20° C to 45° C (-4° F to 113° F).

ELECTRICAL

Drive: AC 120V 60Hz. or 100-277V 50/60Hz.

DIMMING

Triac dimmable.

CCT & CRI

2700K, 3000K, 3500K, 4000K, 5000K

Field Selectable CCT

CRI 80

Certifications

UL Listed.

WARRANTY

5 Years Limited Warranty.

Beam Angle

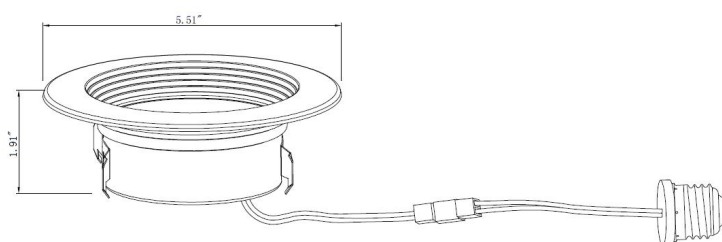
120°

Packing/Weight:

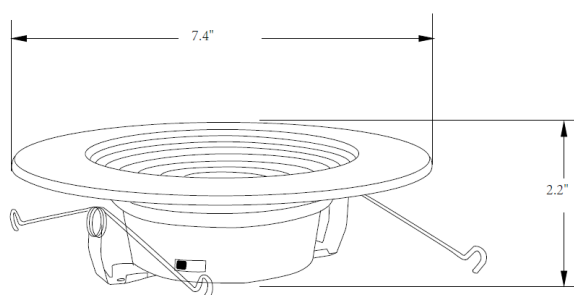
Model	Outer box (L*W*H)	Qty/CTN (pcs)	N.W./pcs (lbs/kg)	G.W./CTN (lbs/kg)	Remark
SZ-DL9W4-SP (DL)	13.39" * 12" * 12.6" 340 * 305 * 320mm	24	7.26/3.3	9.24/4.2	
SZ-DL15W6-SP (DL)	16.54" * 15.75" * 16.14" 420 * 400 * 410mm	24	13.4/6.1	15.62/7.1	

DIMENSIONS (unit: inch)

4 inch



6 inch



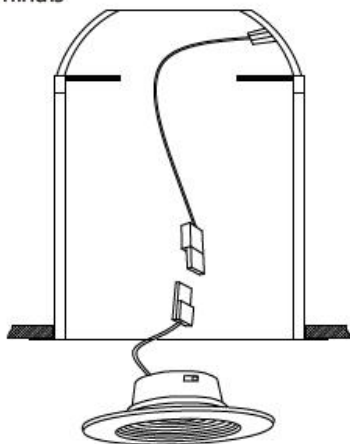
LED DownLight

INSTALLATION STEPS:

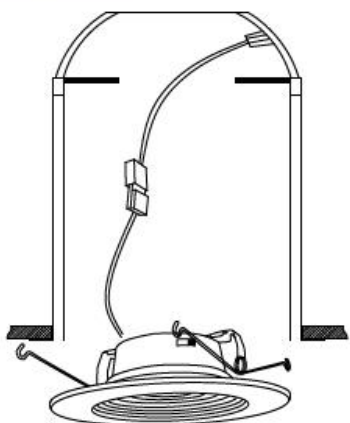
LED Down Light

EASY INSTALLATION 1 (EITE EZ CONNECT HOUSING)

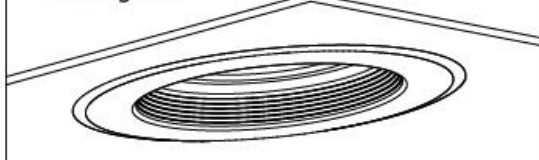
1. EZ Connect housing, then connect the terminals



2. Attach the torsion springs to the brackets of the recessed can



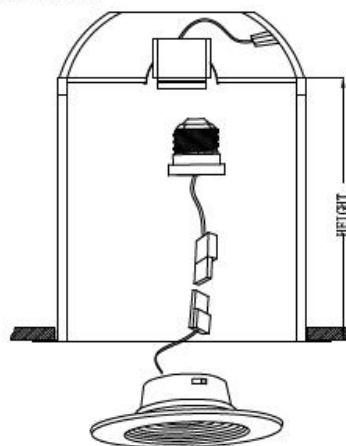
3. Insert the LED Retrofit Kit into the recessed housing unit



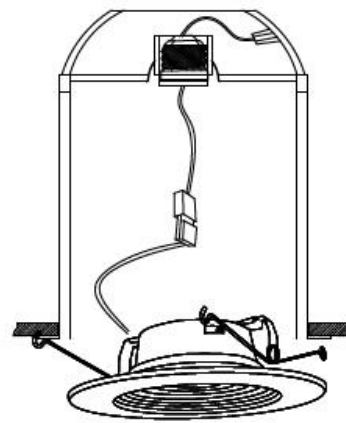
LED Down Light

EASY INSTALLATION 2 (WITH STANDARD SOCKET HOUSING)

1. Install the adapter, then connect the terminals



2. Attach the torsion springs to the brackets of the recessed can



3. Insert the LED Retrofit Kit into the recessed housing unit

