

# MODULAR WORKSPACE INTERIORS



# Applications

## WHAT WE DO



CORPORATE



GOVERNMENT



AIRPORT



HOSPITALITY



EDUCATION



MANUFACTURING

With an in-house team of architectural and mechanical designers and a network of designing partners spread across multiple operational hubs, we oversee every phase of the project, acting as a single turnkey provider.

Whether optimizing a client's existing design or developing a complete construction and execution project from the ground up, we manage the entire process, from planning and procurement to installation, fit-out and day 2 services.

Working with one industrial partner ensures a single point of contact for all phases, transparent and predictable costs, reduced risk of delays or unforeseen issues, faster lead times and greater project reliability.

# DESIGN & BUILD

Analysis of customer requirements

Layout development study

Regulatory review and compliance

Project budgeting and CapEx evaluation of investment costs

Development of project design and construction timelines

Detailed architectural and engineering design

Technology and infrastructure coordination

Execution of turnkey Design & Build contract



# Product

## EASY WALL

Easy Wall is our most cost-competitive glazed partition system, designed specifically for the U.S. market. Featuring a minimal profile and excellent height adjustability, it is ideal for fast-paced projects with tight schedules.

Available in single glazing, Easy Wall offers quick and easy installation. The system integrates seamlessly with Mangini's full door lineup.

Lightweight and luminous, Easy Wall delivers impressive acoustic performance making it a smart, efficient solution for modern office environments.



1. CEILING FRAME
2. FLOOR HORIZONTAL AND VERTICAL FRAME
3. COVER FRAME
4. COVER GASKET
5. FRAME GASKET
6. LAMINATED OR TEMPERATED GLASS
7. FLOOR FIXING
8. SLIDING DOOR FRAME ASSEMBLY



# EASY WALL



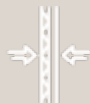
## Module Widths

Customizable



## Height

Height up to 125 inches



## Partition Total Thickness

Single glazed 1 3/8 inches



## Adjustment and Leveling

This lower leveling system height differences of approximately  $\pm 3/4$  inch ( $\pm 16$  mm) per panel, ensuring a clean and continuous installation



## Structure


Continuous glazed partition with an anodized or aluminum rail profile

- Tempered Glass: Thickness ranges from 3/8 in or 1/2 in
- Laminated Glass (with standard or acoustic PVB interlayers): Thickness ranges from 3/8 in or 1/2 in



## Certifications

- Acoustic insulation



PLANIKA  
CLASSIC.  
WOODEN  
PANELS AND  
NUMBERLESS  
ESSENCES  
AND COLORS.

Stripes:  
partitions in your style.

# Product

# PLANIKA

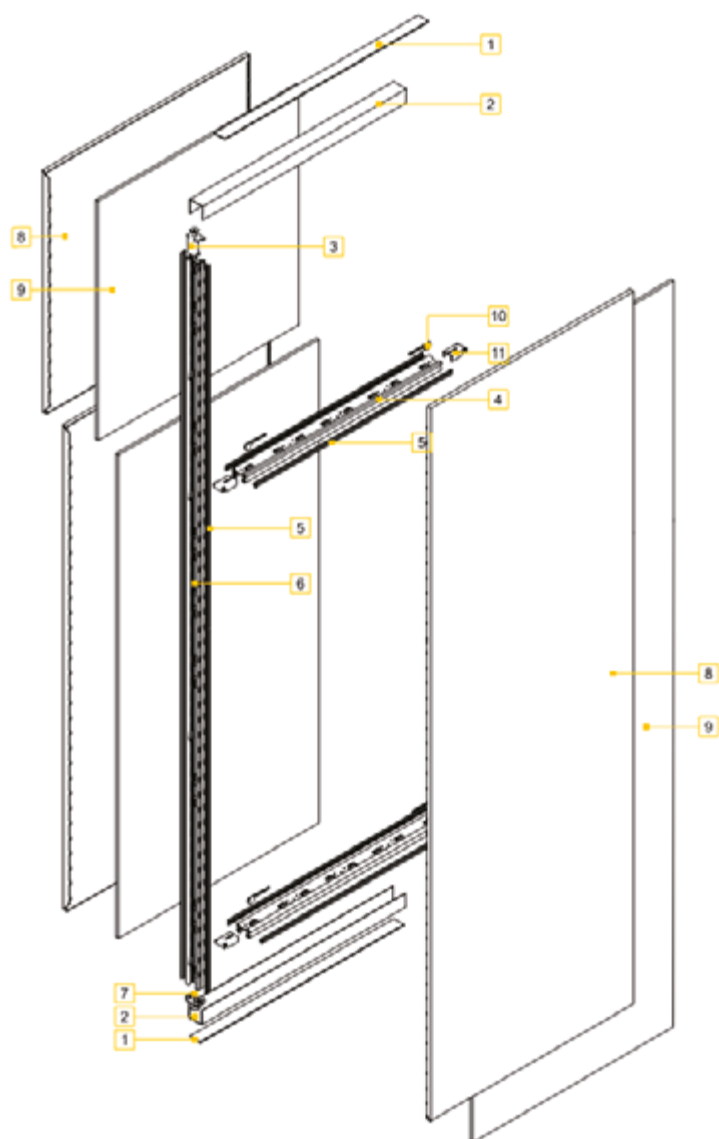
Planika is a high-performance line of mobile partitions featuring a concealed fixing system and modern design flexibility.

Available in Steel, Classic, and Glass versions, the system meets the diverse needs of offices:

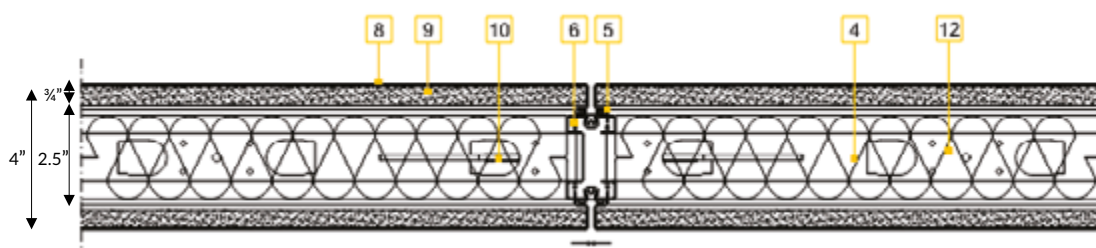
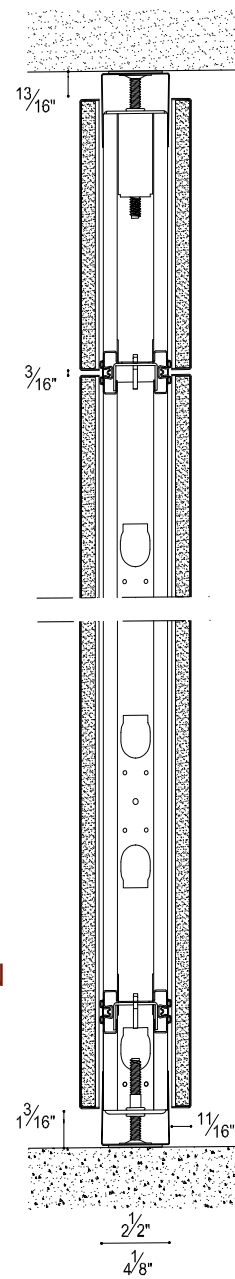
- Planika Steel uses varnished steel panels;
- Planika Classic features solid colors and warm wood-effects melamine panels;
- Planika Glass offers full-height transparency with seamless transitions between glazed and solid elements.

All variants are certified for seismic performance, fire performance, acoustics, and environmental standards, delivering aesthetics, safety, and long-term durability in any setting.

# PLANIKA



1. ADHESIVE ACOUSTIC FOAM PAD
2. RAIL
3. UPPER SPRING
4. CROSSPIECE
5. GASKET
6. UPRIGHT
7. LEVELLER
8. STEEL SKIN
9. GYPSUM BOARD
10. CROSSPIECE LEVELER
11. CONNECTION BRACKETS
12. MINERAL WOOL INSULATION





# PLANIKA

Planika® redefines partitions with sleek concealed fixings and cutting-edge design. Available in a range of premium finishes and materials, it's built to adapt to every space and every need.



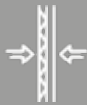
## Module Widths

Customizable



## Height

Height up to 157 inches



## Partition Total Thickness

Partition 4" 1/8 or 6"  
Cladding 2" or 4"



## Cladding Panels

Finished with steel, wood, or glass panels, allowing for a range of aesthetic and functional options



## Structure

- Constructed with a framework of galvanized steel uprights and crosspieces, ensuring strength and stability



## Certifications

- Seismic performance
- Fire resistance
- Acoustic insulation
- Environmental compliance



## Installation

- Designed for installation between the floor and ceiling, ensuring full-height separation and structural integration



# Product

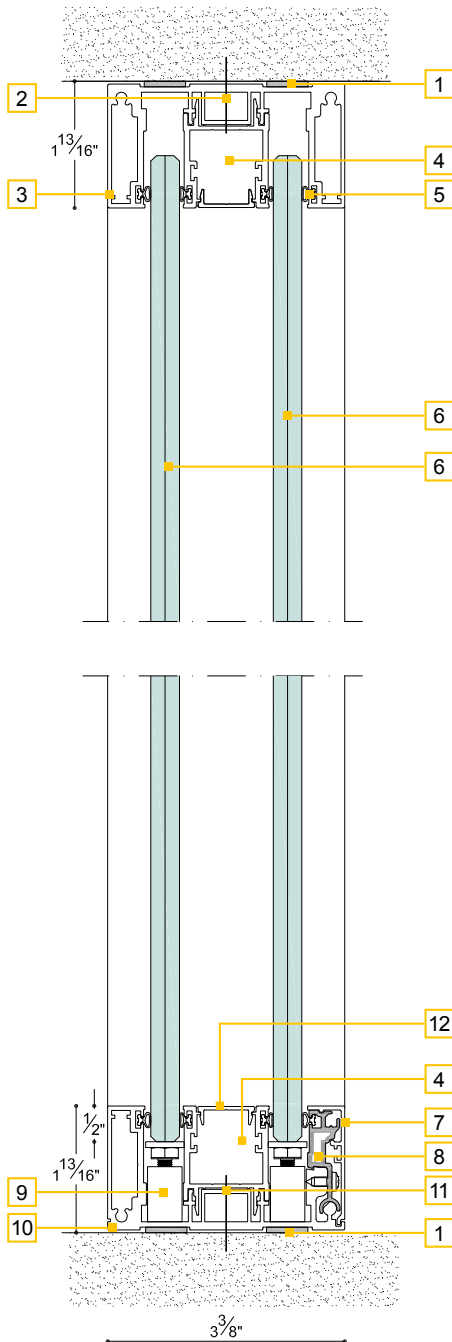
## FLUX ONE

Flux is our most advanced and versatile partition system, offering a wide range of solid, glazed, curved walls, and self-standing enclosures. Engineered to meet California seismic standards, it is ideal for environments requiring visual openness without compromising on sound insulation or functionality.

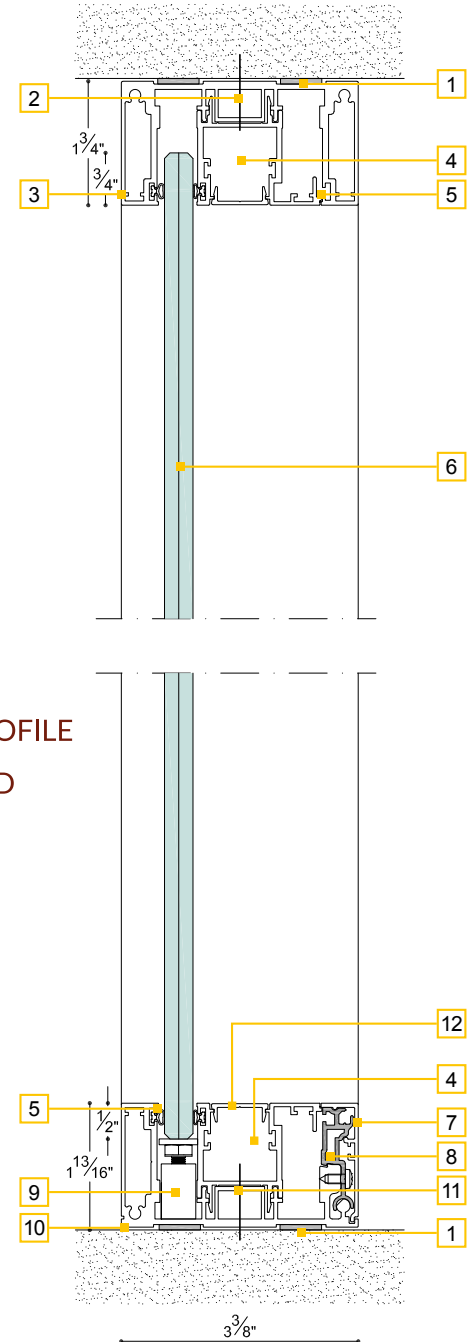
Designed for discerning clients, Flux One combines architectural transparency with high acoustic performance (high STC rating) and seamless integration of multimedia, cable management, and shading systems.

The aluminum profile accommodates  $\frac{1}{2}$ " glass or  $\frac{3}{4}$ " thick wood/metal panels, enabling easy transitions between glazed and solid configurations. A concealed steel substructure allows for horizontal and vertical integration of utilities, with full panel accessibility for future upgrades. Leveling systems ensure perfect alignment on uneven surfaces.

# FLUX ONE



1. GASKET FOR ACOUSTIC INSULATION
2. CEILING FIXING
3. UPPER PROFILE
4. SPACE FOR CABLE PASSAGE
5. CONTINUOUS GASKET
6. STANDARD OR ACOUSTIC GLASS
7. ALUMINUM ANGLE SNAP PROFILE
8. CONTINUOUS GLAZING BEAD
9. BASE LEVELLER
10. BASE PROFILE
11. FLOOR FIXING (OPTIONAL)
12. SNAP ON PROFILE



# FLUX ONE

Flux One is a continuous single- or double-glazed partition system featuring a universal rail profile made of anodized or painted aluminum. The system is designed to accommodate the insertion of tempered or laminated glass, depending on project requirements. The same profile can also support solid panels made of wood or steel, offering design flexibility and functional versatility.



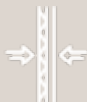
## Module Widths

Customizable



## Height

Height up to 125 in



## Partition Total Thickness

3½ inches (85 mm)



## Adjustment and Leveling

Integrated leveling systems allow for ± ⅛ inch (± 3 mm) per panel



## Structure

- Continuous glazed partition with an anodized or aluminum rail profile, designed for seamless integration of both solid and transparent panels



## Certifications

- Seismic performance
- Fire resistance
- Acoustic insulation
- Environmental compliance



## Double or single glass

- **Tempered Glass:** Thickness ranges from 3/8 in or 1/2 in
- **Laminated Glass** (with standard or acoustic PVB interlayers): Thickness ranges from 3/8 in or 1/2 in
- Infill solid panel compatibility, wood effect melamine panels or steel





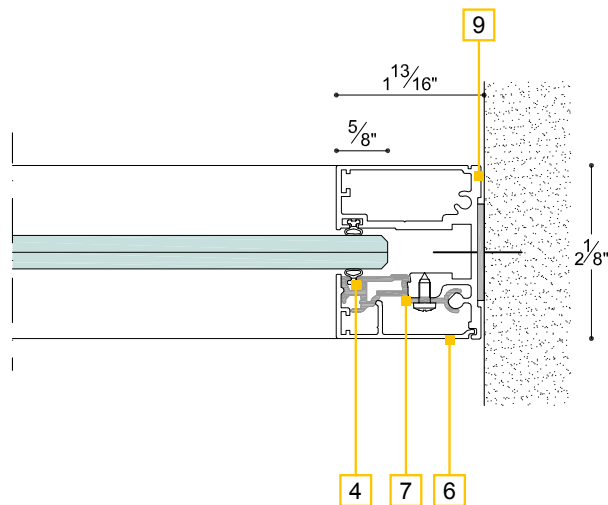
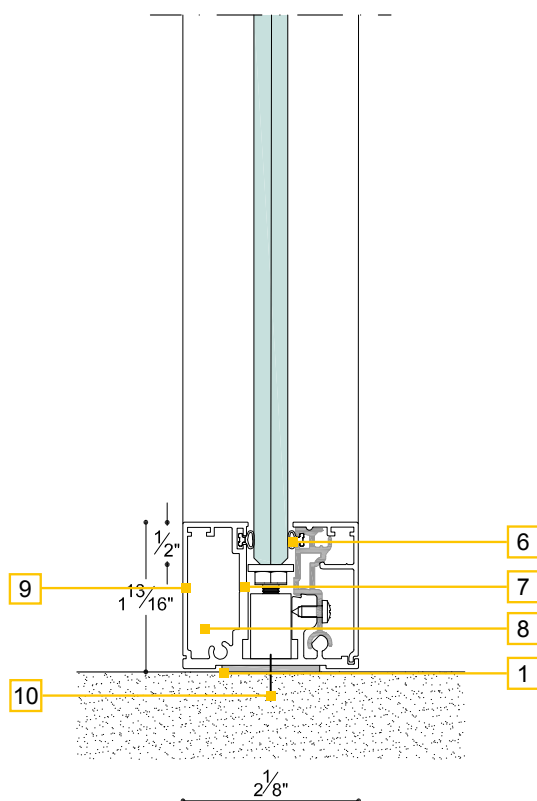
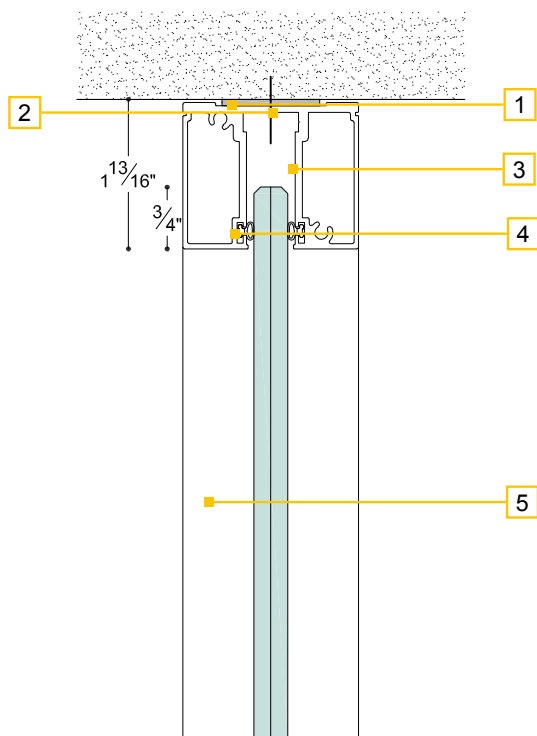
# Product

# FLUX MONO

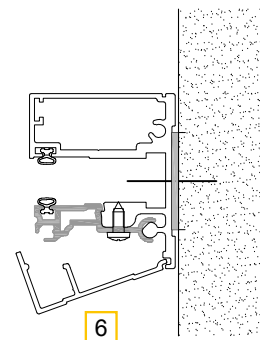
Flux Mono is a full-height glazed partition system featuring slim anodized or varnished aluminum profiles and accommodating 1/2" thick glass.

Designed for clean lines and acoustic comfort, it includes double PVC gaskets and leveling systems that ensure precise alignment and compensate for floor height variations. The "L" shaped floor and ceiling rails include acoustic gaskets and EPDM seals to isolate the partition from building structures, enhancing sound insulation.

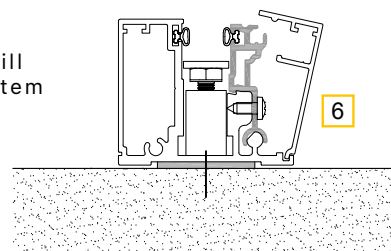
# FLUX MONO



dismountable wall  
start system



dismountable sill  
connection system



1. GASKET FOR ACOUSTIC INSULATION
2. CEILING FIXING
3. UPPER "C" ALUMINUM PROFILE
4. CONTINUOUS GASKETS ON BOTH GLASSES SIDES
5. SAFETY LAMINATED GLASS 55.1, 66.1 OR TEMPERED 3/8", 1/2"
6. ALUMINUM ANGLE SNAP PROFILE FIXED ON GLAZING BEAD
7. CONTINUOUS GLAZING BEAD FIXED WITH SCREWS
8. BASAL LEVELLER
9. "L" BASE PROFILE FIXED WITH SCREWS
10. FLOOR FIXING (OPTIONAL)

# FLUX MONO

Flux Mono is a single-glazed partition system featuring a rail profile made of anodized or painted aluminum. The system incorporates leveling mechanisms within the lower profile, which allow the glass panels to be precisely aligned and seamlessly joined.



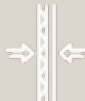
## Module Widths

Customizable



## Height

Height up to 125"



## Partition Total Thickness

2 inches (54 mm)



## Adjustment and Leveling

This lower leveling system height differences of approximately  $\pm \frac{1}{8}$  inch ( $\pm 3$  mm) per panel, ensuring a clean and continuous installation



## Structure

Continuous glazed partition with an anodized or aluminum rail profile

- Tempered Glass: Thickness ranges from 3/8 in or 1/2 in
- Laminated Glass (with standard or acoustic PVB interlayers): Thickness ranges from 3/8 in or 1/2 in



## Certifications

- Seismic performance
- Fire resistance
- Acoustic insulation
- Environmental compliance



**MANGINI U.S.A.**

**Nicos Group, Inc.**

80 Oak Street

Norwood NJ 07648 - USA

Phone: 201-768-9501

Fax: 201-768-9504

**info@nicosgroup.com**  
**www.nicosgroup.com**

