

HEat. smART.

Partner in Baking. Since 1963



MANTEGNA

Electric oven with rotating deck

LLKMT40 - LLKMT40P

INSTALLATION

INTRODUCTION

This oven has been designed with the utmost care and undergone rigorous tests in our laboratories and for this reason we guarantee its absolute safety and functionality.

The installation must be carried out by **professionally qualified** staff, that can take responsibility for the installation and guarantee the best safe operating conditions.

Before the installation, read the content of this manual **carefully**: it contains important information regarding product assembly and safety regulations.

TECHNICAL SERVICE

The Dealer can solve any technical problem regarding installation.

Do not hesitate to contact him in case of doubt.

CUPPONE since 1963

CUPPONE S.R.L.

Via Sile, 36

31057 Silea (TV) - ITALY

T +39 0422 361143

F +39 0422 360993

info@cuppone.com - www.cuppone.com

CONTENTS

1	CHECKS BEFORE PURCHASING.....	3
----------	--------------------------------------	----------


	OVEN TECHNICAL DATA.....	5
2	Technical data Overall dimensions.....	5
	Technical data Cooking chamber dimensions and productivity.....	6
	Technical data Electrical data.....	6

3	SAFETY INSTRUCTIONS.....	7
	Symbols used in the manual and on the labels applied to the machine.....	7


	INSTALLATION.....	2
	Installation Transport and preliminary operations	9
	Installation Positioning	10
4	Installation Smoke extraction.....	11
	Installation Electrical connection	12
	Installation Electrical diagrams.....	14
	Installation Test.....	16

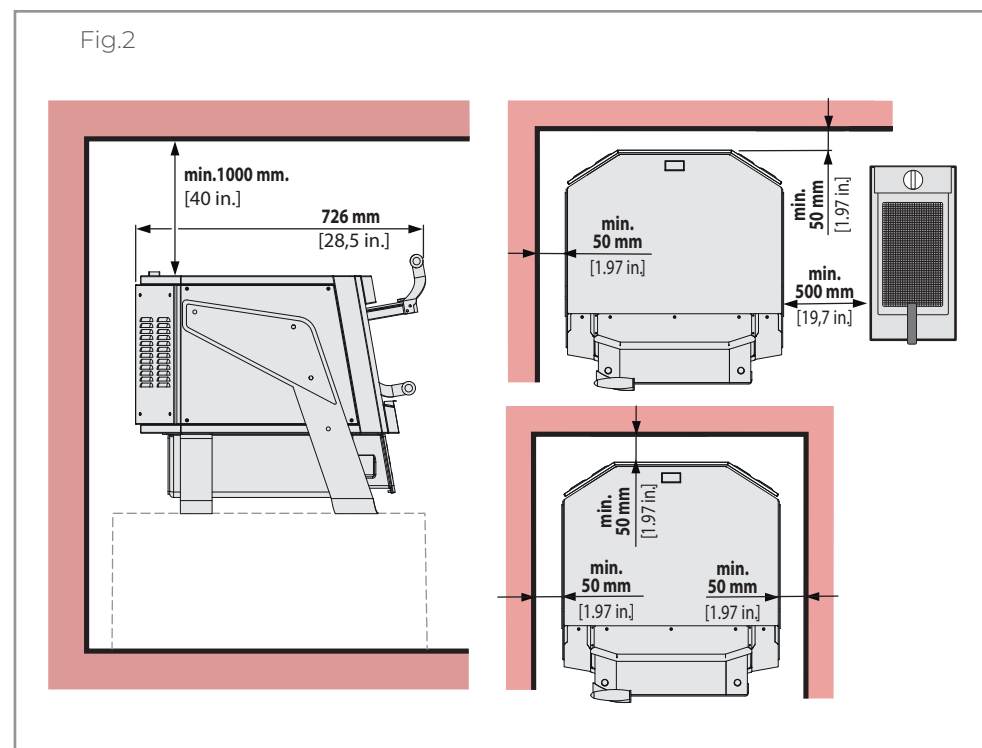
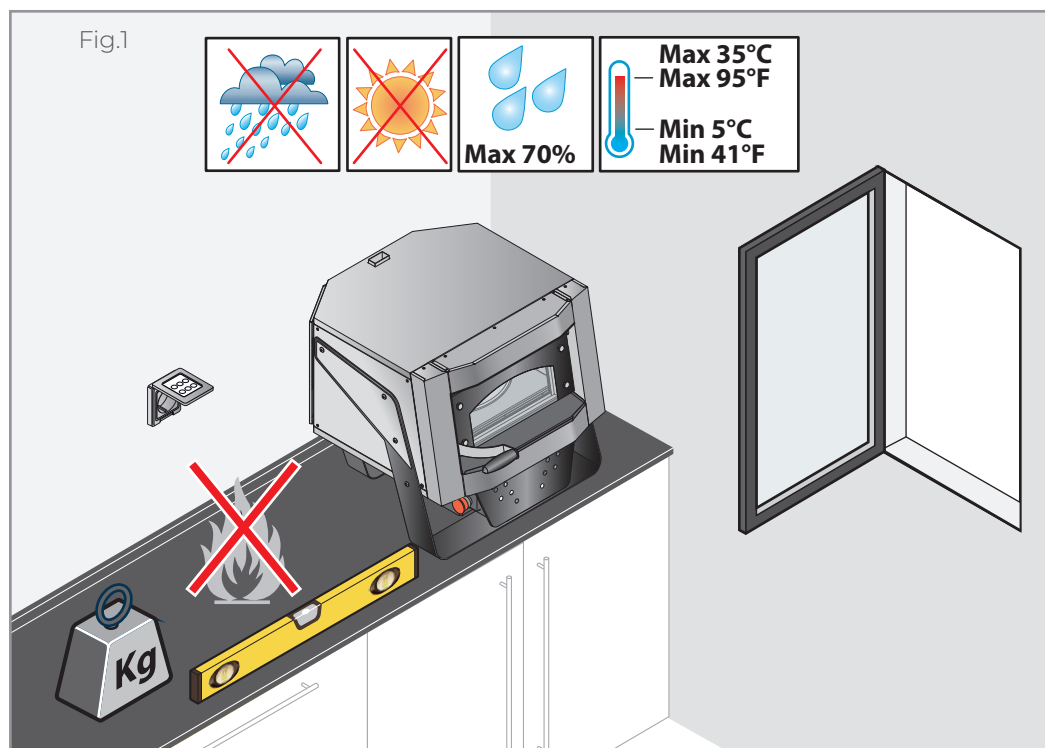
1 CHECKS BEFORE PURCHASING

Before purchasing the oven and before its installation, **check and agree with the owner** that, on installation, all the following conditions are met; they are indispensable for the correct and safe installation, operation and maintenance of the oven.

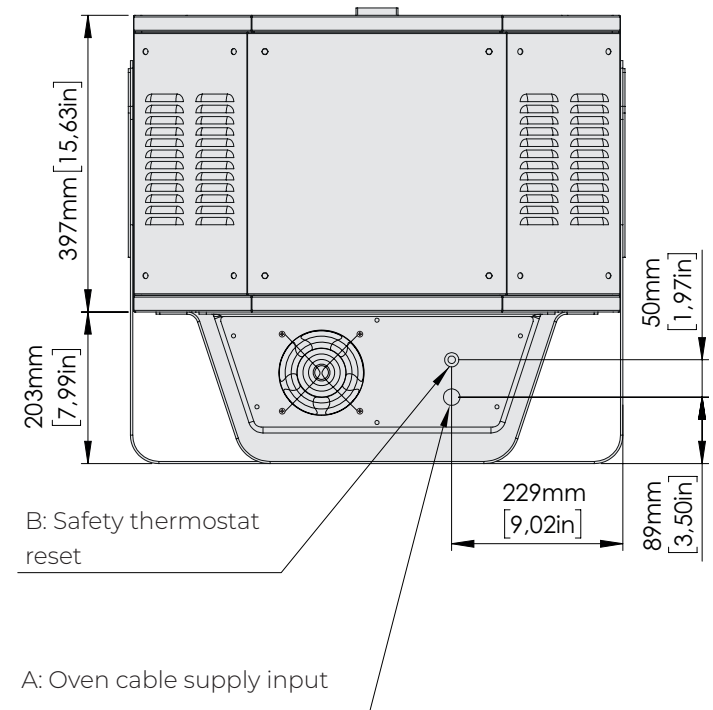
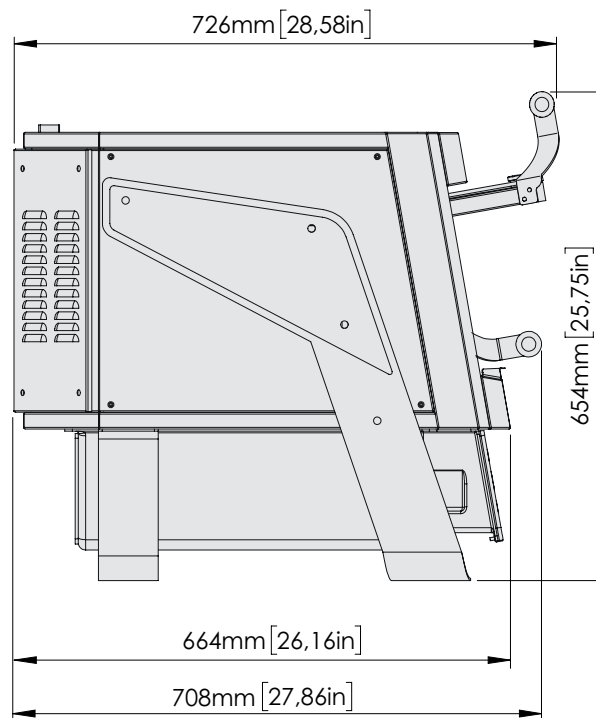
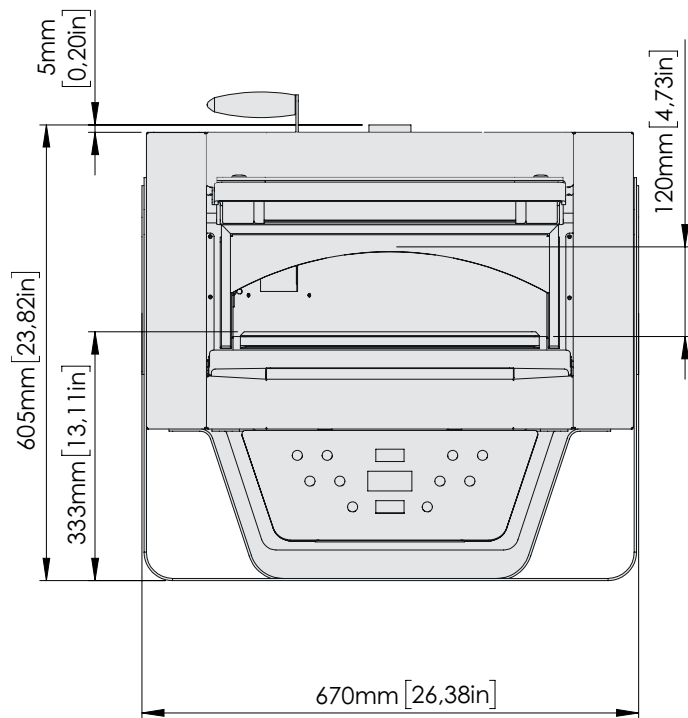
A	Check with the owner if in the place of installation there are the tools and instruments to easily lift and transport the oven
✓	To lift and handle the oven it is necessary that:
	<ul style="list-style-type: none"> there are adults in perfect psycho-physical shape available, able to lift and handle the equipment safely (check the weights and dimensions in the “Technical data” section starting from page 5);
	<ul style="list-style-type: none"> personal protection equipment is available (e.g. safety shoes, gloves, etc.)
B	Check the dimensions of the selected oven and accessories
✓	Check that:
	<ul style="list-style-type: none"> the dimensions of the selected oven are suitable to the available space in the installation room.
	<ul style="list-style-type: none"> the capacity of the cooking chamber is adequate to the owner's needs (the weights and measurements of the ovens and the cooking chamber can be found in the “Technical data” section starting from page 5).
C	Survey the installation room to make sure it is adequate.
✓	Make sure that:
	<ul style="list-style-type: none"> the supporting base is fireproof, flat and capable of withstanding the weight of the appliance;
	<ul style="list-style-type: none"> the installation room: <ul style="list-style-type: none"> is dedicated and suitable to cooking food; has adequate air ventilation; contains no flammable or explosive elements; complies with the current regulations on health and safety and systems in the workplace; is protected from the weather; has a maximum temperature of between +5 °C (41 °F) and +35 °C (95 °F); has a maximum humidity of 70%.
	<ul style="list-style-type: none"> there are NO other sources of heat (i.e. grills, fryers, etc.), highly flammable substances or fuels (i.e. gasoline, petrol, bottles of alcohol, etc...) in the vicinity of the appliance.
	<ul style="list-style-type: none"> It is possible to maintain the following minimum distances between the oven and the walls, other appliances, objects and combustible materials ► Fig.4: <ul style="list-style-type: none"> right and left side: 50 mm [1.97 in.] back: 50 mm [9.84 in.] top: 1000 mm [39.37 in.]
	 It is absolutely necessary to comply with the minimum stated safety distances. The distances must be increased in case of objects in heat-sensitive materials.
	<ul style="list-style-type: none"> there is adequate ventilation according to the regulations in force in the Country of installation.

Checks before purchasing

D	Inform the owner about the necessary electrical arrangements (activities to be carried out by a qualified electrician)
✓	For a correct connection:
	<ul style="list-style-type: none"> ■ provide a socket near the oven, connecting to the electrical network. <p>The "Technical data" section from page 5 contains all the electrical data as well as the positions of the supply cable and equipotential terminal.</p>
	<ul style="list-style-type: none"> ■ check that the systems in the room comply with the legal provisions in force in the country of use and meet the specifications on the serial number plate. <p>For a correct electrical connection, the appliance must:</p> <ul style="list-style-type: none"> ■ must be grounded  to the mains (green-yellow wire); ■ must be connected to a thermal differential switch in compliance with the regulations in force (0.03A A type); ■ must be connected to an omnipolar circuit breaker allowing complete disconnection in overvoltage III category conditions.



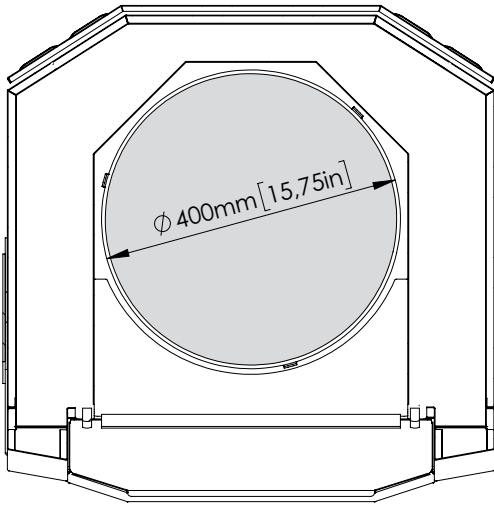
2 OVEN TECHNICAL DATA | Overall dimensions



PACKAGING		WEIGHT	DIMENSIONS
	MT40	87.5 kg	764 x 764 x 792 mm
		192.9 lbs	30" x 30" x 31,17" in

OVEN		WEIGHT
	MT40	74 kg
		163.1 lbs

OVEN TECHNICAL DATA | Cooking chamber dimensions and productivity



Model	Productivity per hour
LLKMT40P/1PH	27 pizzas
LLKMT40P/3PH	27 pizzas
LLKMT40/1PH	20 pizzas

OVEN TECHNICAL DATA | Electrical data

Model	Power supply	Power	Average consumption	Absorption	Cable type	Customer panel protection
	(V)	(kW)	(kWh)	(A)	(N x mm ²)	NxA
LLKMT40P/1PH	AC 230-1	4	2,4	17,4	3x2,5	2x25
LLKMT40P/3PH	AC 400-3-N	4	2,4	5,8	5x1,5	4x16
LLKMT40/1PH	AC 230-1	2,8	1,7	12,2	spina shüko	2x16

3 SAFETY INSTRUCTIONS

SYMBOLS USED IN THE MANUAL AND ON THE LABELS APPLIED TO THE MACHINE



Indicates that caution is required when performing an operation described in a paragraph that bears this symbol. The symbol also indicates that maximum operator awareness is required in order to avoid unwanted or dangerous consequences



Indicates that the surfaces marked with this symbol may be hot and must therefore be touched carefully



Dangerous voltage



Risk of explosion



Reference to another chapter where the subject is dealt with in more detail.



Manufacturer's tip



Manufacturer's warning



Indicates that it is necessary to read carefully the paragraph marked with this symbol before installing, using and maintaining the equipment



- Failure to follow these regulations may cause damage or even fatal injury, subsequently invalidating the guarantee and relieving the Manufacturer of all liability.
- Read this guide carefully before installing the appliance, and keep it with care in an accessible place for any future consultation by the various operators.
- Moreover, the manual must always accompany the product through its life, even in case of transfer.
- Unauthorised actions, tampering or modifications that do not follow the information provided in this manual can cause damages, injuries or fatal accidents and null and void the warranty.
- Installation or maintenance that fails to comply with the instructions in this manual may cause damage, injury or fatal accidents.
- Before any movement or installation, check that the room is suitable and systems comply with the installation country standards and the specifications indicated on the appliance rating plate.
- All installation, assembly and non-routine maintenance operations must be performed exclusively by qualified technicians that are authorised by the Manufacturer, in compliance with the regulations in force in the user country, and with the regulations on systems and work safety.
- These appliances are intended to be used for commercial applications, for example in restaurants, canteens, hospitals and commercial enterprises such as bakeries, butcher shops, etc., but not for the continuous and mass production of food. A use other than the stated one is considered improper, potentially dangerous for people and animals and might permanently damage the appliance. The improper use of the equipment shall void the warranty.
- Before performing any maintenance, replacing components or carrying out any routine/extraordinary cleaning, disconnect the electricity supply.
- It is forbidden to install the oven in environments at risk of explosion.
- Persons not involved with the appliance installation may not pass through or stand in the work area during the transport of the appliance.
- If left unattended, packaging could be dangerous for both children and animals (danger of suffocation) and could hinder vehicles and installers during assembly operations.

Safety instructions

- The serial plate provides important technical information. This is vital in case of a request for maintenance or repair of the equipment: please do not remove, damage or modify it.
- **WARNING** - To reduce the fire hazard, the appliance must be installed only in rooms without combustible materials within about 46 cm (18 inches) from the sides, front or rear of the appliance or within about 102 cm (40 inches) above the appliance. The appliance must be placed on non-combustible surfaces and without combustible materials in contact with the lower side. The support surface must in any case extend no less than about 31 cm (12 inches) beyond the appliance on all sides.
- Make sure that the base on which the oven rests is fireproof, flat, stable and able to support the weight of the appliance.
- Check that the oven rests firmly and completely on the underlying base with both supports, front and rear.
- (Appliances without either power cable or plug) The electrical connection must be carried out exclusively by qualified personnel after reading the safety warnings at the beginning of the manual.
- (Appliances without either power cable or plug) The cable must be only of the type stated and the plug fitted to it must be suitable for the consumption and connection of the oven to the electrical mains.
- If required, the cable can be replaced by the Dealer or its technical service or by a person with similar qualifications to prevent any risk.

The company cannot be held liable for any print or transcription errors, reserving the right to make changes where deemed suitable without prior notice.

Partial reproduction without the Manufacturer's consent is prohibited. Measurements are purely indicative and not binding.

The original language used to prepare this manual is English: the Manufacturer is not responsible for any translation/interpretation or print errors.

4 INSTALLATION | Transport and preliminary operations

TRANSPORT AND POSITIONING

► **Fig.3** The oven can be moved **with a means of transport suitable** for its weight and dimensions (e.g. trolley, forklift) or manually by **adults in perfect psycho-physical shape**, provided with personal protection equipment.

⚠ **Persons not involved with the appliance installation may not pass through or stand in the work area during the transport of the appliance.**

During the transport, pay particular attention to passing through openings and/or doors.

Model	Weight	No. of people for the transport (Decree-Law 81/08 - ISO 11228)	
		men	women
MT40	74 kg 163.1 lb	3 (max. 25 kg each)	5 (max. 15 kg each)

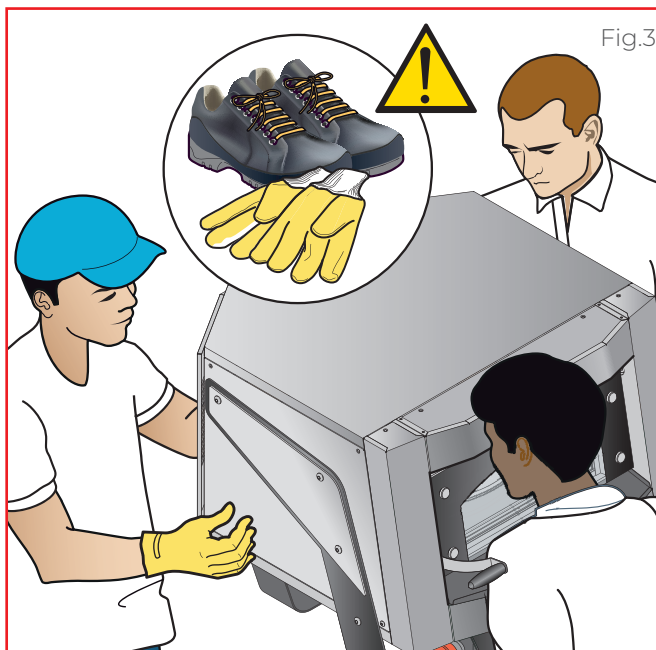


Fig.5

PRELIMINARY OPERATIONS

► **Fig.4** Carefully remove the protective film; if any glue residue is left, remove it with soapy water but without any corrosive or abrasive products or sharp or pointed instruments.

Assembly the handle like shown in figure.

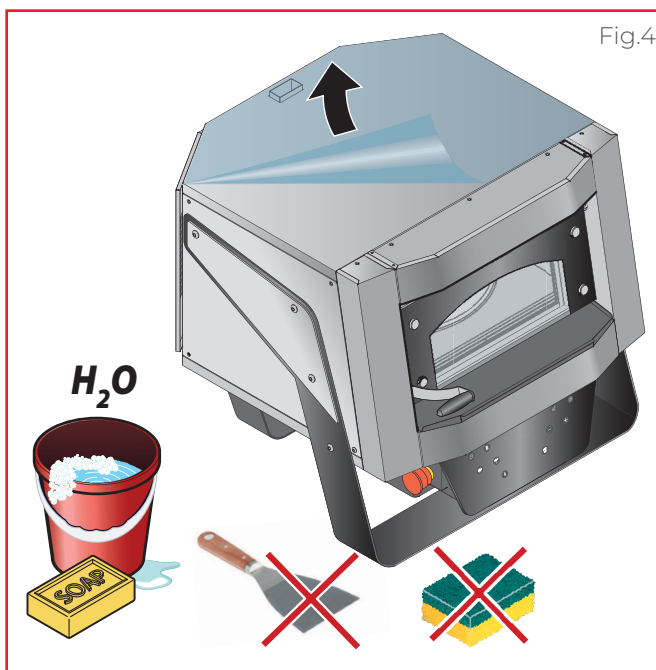
⚠ **Check that all the parts making up the oven are in good condition and without any faults or breakages, if that is not the case, contact the Manufacturer for the procedures to be followed.**

PACKAGING DISPOSAL

Before starting to install the oven, dispose of the packaging in accordance with the regulations in force in the country of installation.

⚠ **Caution, suffocation hazard! If left unattended, packaging could be potentially dangerous for both children and animals.**

⚠ **Caution, hindrance hazard! If left unattended, packaging could hinder during assembly operations.**



POSITIONING ON A BASE

► Fig.6 - Fig.7

Carefully place the oven on its base.

Make sure it is:

- **fireproof;**
- **flat;**
- **stable and strong;**
- **capable of supporting** the weight of the fully loaded appliance.

⚠ **Check that the oven rests firmly and completely on the underlying base with both supports, front and rear.**

Check that the front space is sufficient for the door to open completely and for easy insertion and removal of the pizzas.

Make sure the installation room is adequate and comply with the minimum distances of the oven from **walls**, other **appliances**, **objects** and **combustible materials**.

⚠ **It is not allowed to stack multiple Mantegna ovens.**

⚠ **DO NOT rest any objects sensitive to heat or combustible on the oven.**

⚠ **Do not use the oven as an anchor for other furniture or objects.**

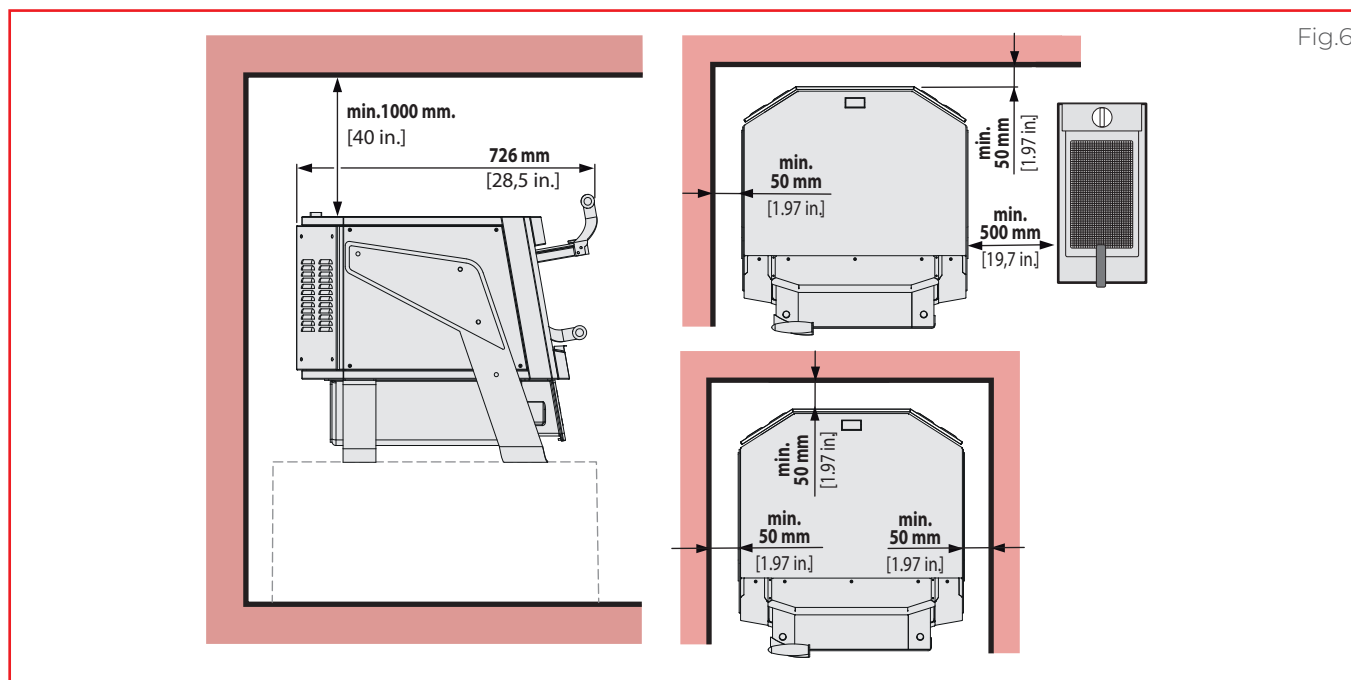


Fig.6

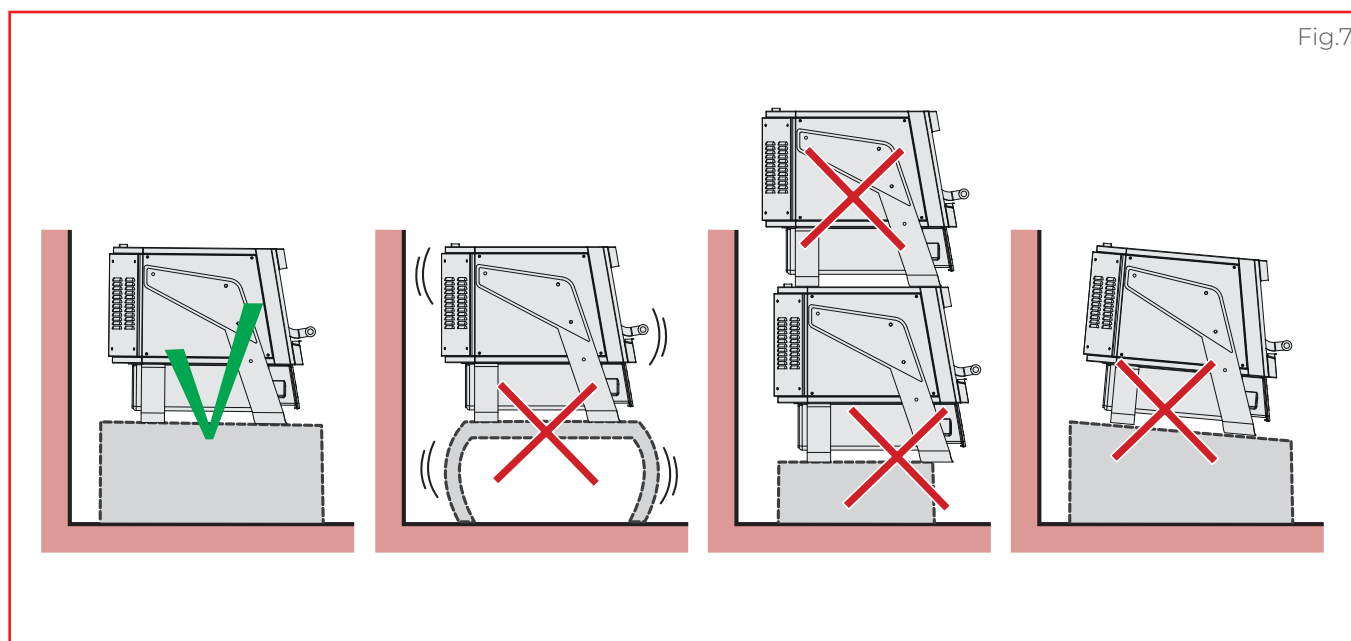


Fig.7

SERIAL NUMBER PLATE READING

► Fig.8

The serial number is on the right hand side of the appliance.

It provides important technical information that is vital in case of a request for maintenance or repair of the appliance: please do not remove, damage or modify it.

SMOKE EXTRACTION

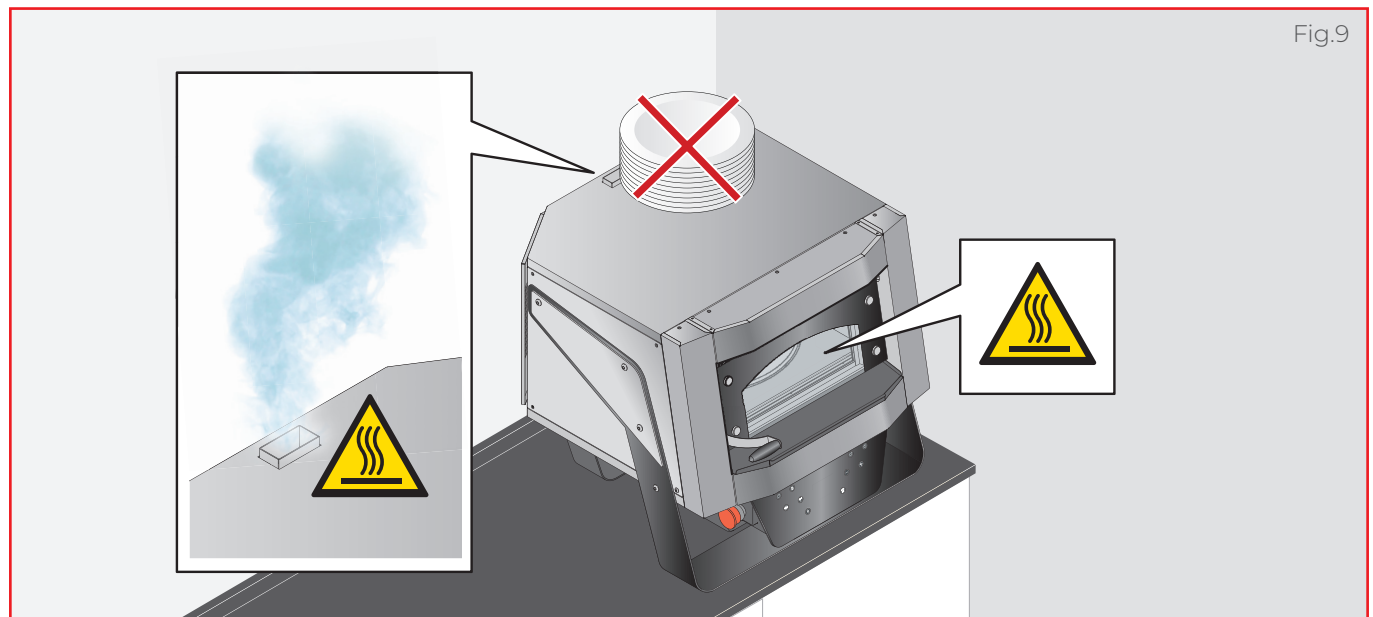
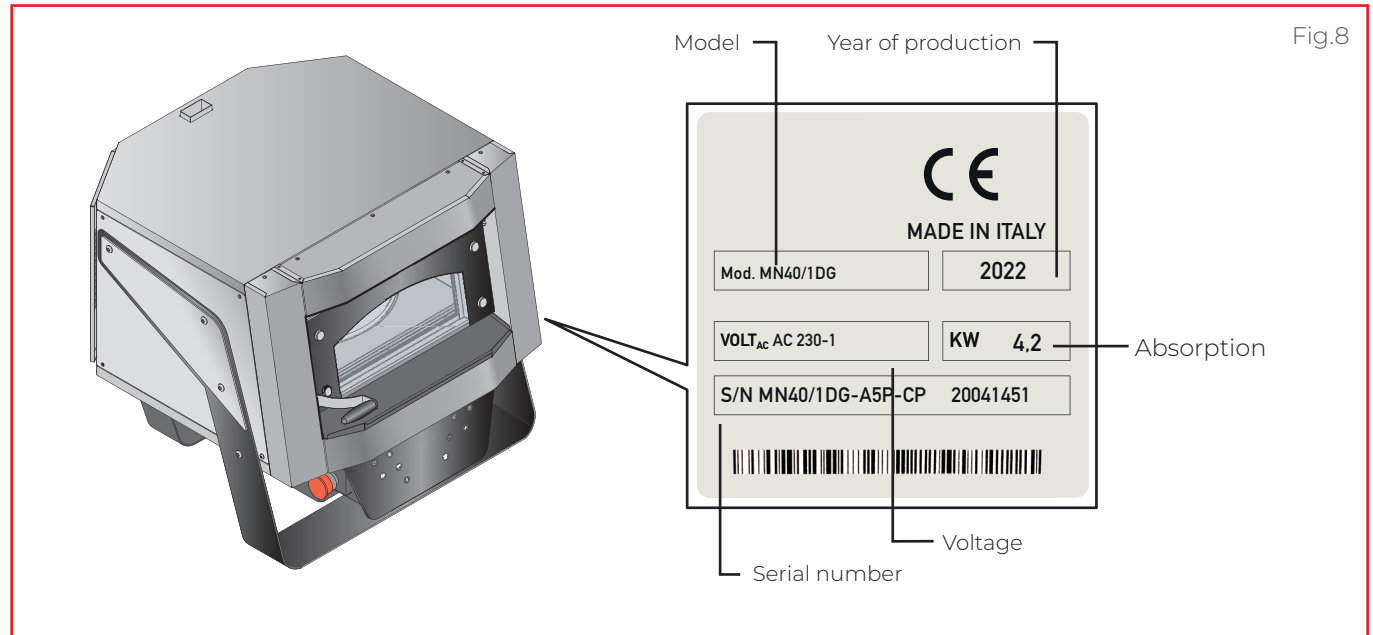
► Fig.9

The oven is fitted with a flue in the top to get rid of the steam from the cooking chamber.

This steam with the one from the door during the work phases, can be released into the room, without any need to be conveyed outside.

 **During use, the area near the discharge reaches very high temperatures, danger of burns.**

 **Always leave the smoke extraction free.**



ELECTRICAL CONNECTION

⚠ Before installing the appliance, check that systems comply with the regulations in force in the country where it is going to be used and with the specifications indicated on the appliance rating plate on the RH side of the oven.

The appliances, depending on the model, are provided with:

- without either power cable or plug;
- power cable and Schuko plug already installed.

Appliances are supplied without either power cable or plug

⚠ The electrical connection must be carried out exclusively by qualified personnel after reading the safety warnings at the beginning of the manual.


⚠ The cable must be only of the type stated and the plug fitted to it must be suitable for the consumption and connection of the oven to the electrical mains.

⚠ If required, the cable can be replaced by the Dealer or its technical service or by a person with similar qualifications to prevent any risk.

► Fig.10 - Fig.11

To connect the cable to the appliance, remove the back panel of the control compartment, let the cable through the cable clamp provided and connect it to the terminal block correctly. The following pages show the electrical diagrams: please refer to the one of the specific model to connect.

For a correct electrical connection, the appliance must:

- must be **grounded**  to the mains (green-yellow wire);
- must be connected to a **thermal differential switch** in compliance with the regulations in force (0.03A A type);

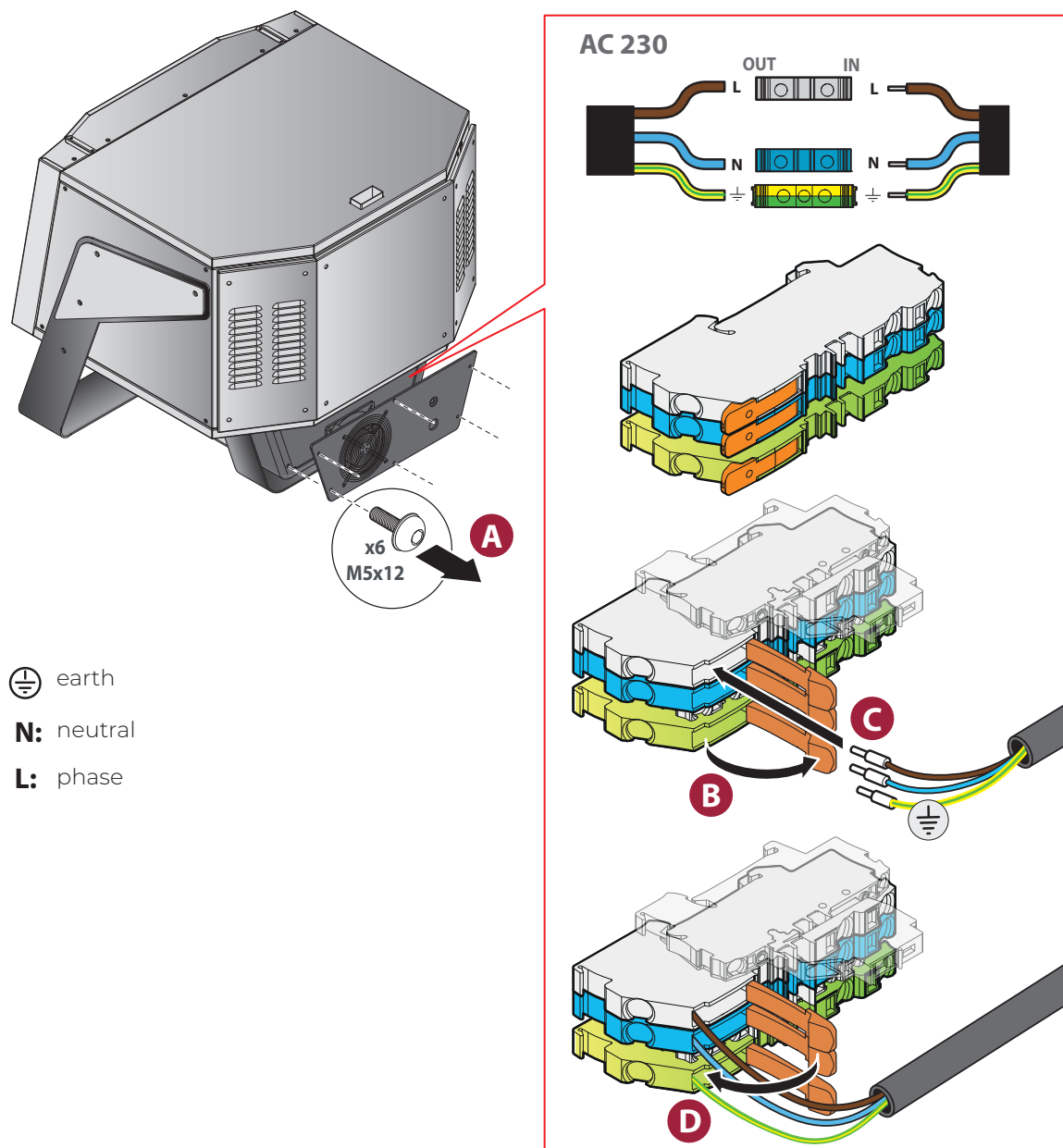
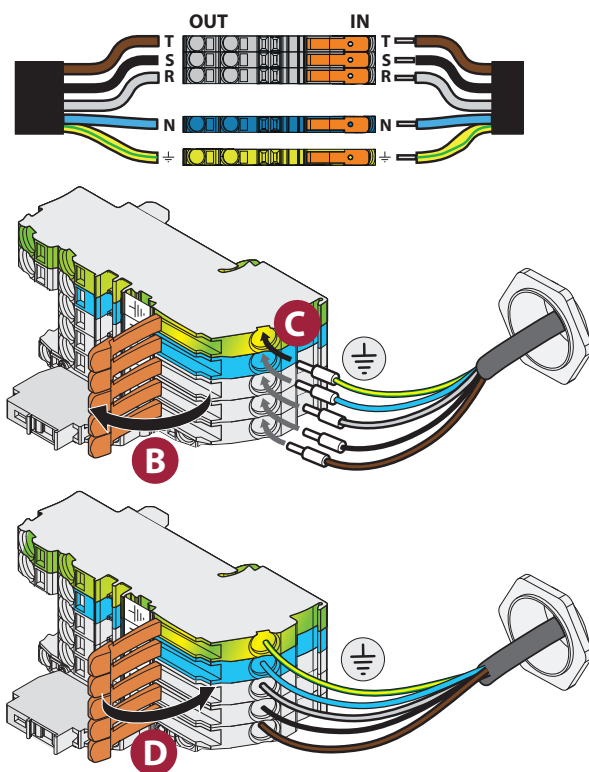


Fig.10

Installation | Electrical connection

AC 3 N400

Fig.12



⏏ earth
N: neutral
T | S | R: phase

- must be connected to an **omnipolar circuit breaker** allowing complete disconnection in overvoltage III category conditions.

The Manufacturer accepts no liability for failure to comply with the above.

Power cable and plug already installed on the appliances.

No maintenance by the installer is required.

⚠ Do not modify or replace the cable and plug already installed.

► Fig.12

To power the oven, insert the plug into a socket **(A)** suitable for the characteristics of the oven; it must always be easily accessible to be able to disconnect the oven when necessary.

If the socket is in a position that is difficult to reach, connect it to an electrical panel **(B)** that complies with the regulations in force; it must allow complete disconnection of the oven under the conditions of overvoltage category III.

► Fig.13

⚠ Do not use adapters or multiple sockets for the electrical connection. It is not possible to extend or splice the power cable in any way. Do not roll up the cable if it is too long and pay attention that it is not pinched, crushed or is an obstacle to the passage of people.

Fig.11

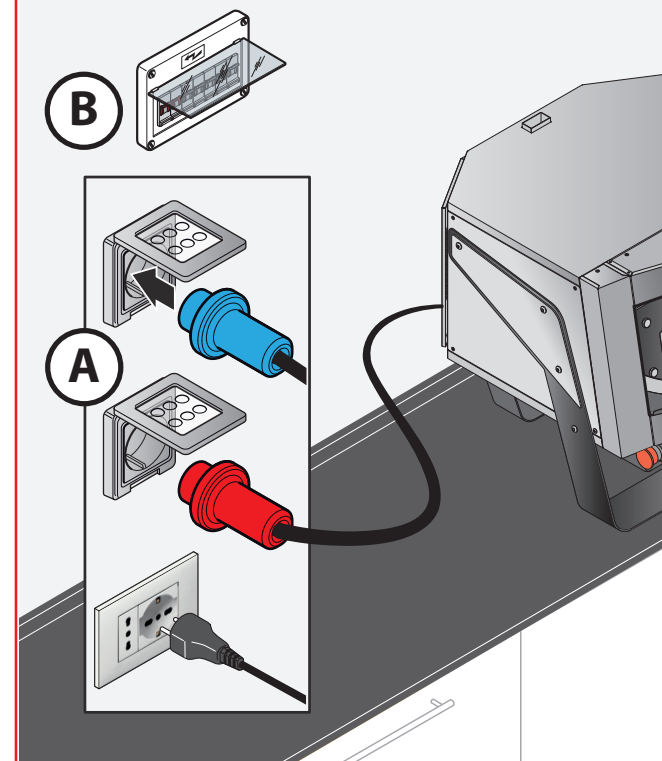
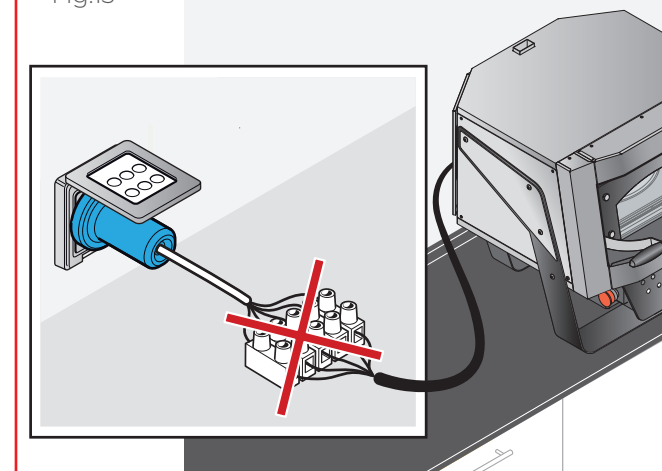
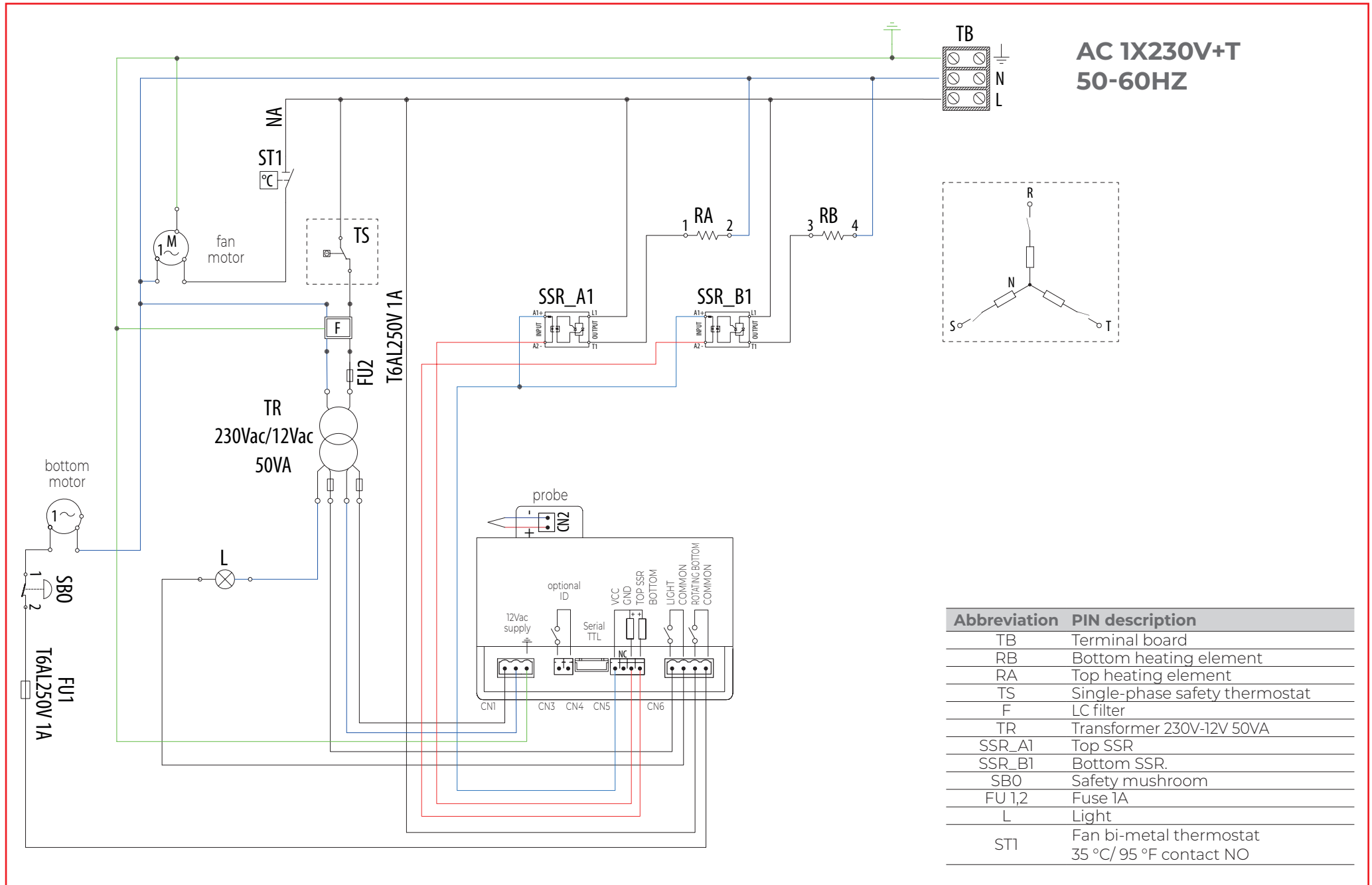
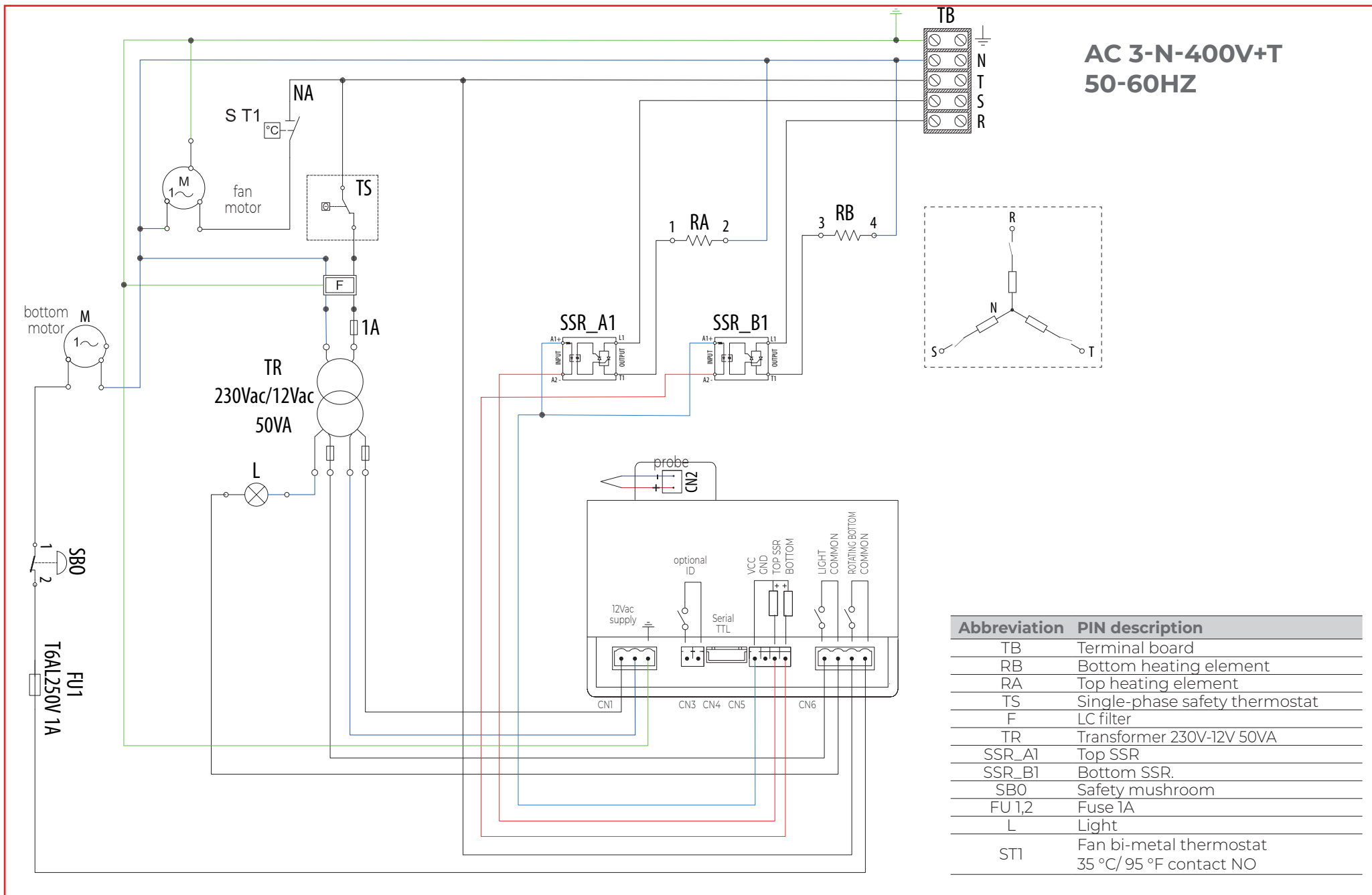


Fig.13







PRE-TESTING AND FINAL INSPECTION

The oven is checked and tested in the Manufacturer's plant before being delivered to the customer.

The "production process check sheet" enclosed with it guarantees that each step in the production process, from assembly to packaging, was carefully checked from both the operating and safety standpoints.

After installing the appliance, check and mark with a "✓" all the boxes of the table on the side: this will confirm the installation is complete and correct.

Finish off explaining to the user how to use the appliance in an optimal and safe way and how to carry out ordinary maintenance and cleaning.

CHECKING THE OPERATION AND FIRST START-UP

Start the appliance following the instructions in the "Use and Maintenance" manual annexed: monitor it during the whole test and check that all the electrical components work properly.

The first time you use the oven, we recommend you set the temperature at 150 °C - 302 °F for at least 8 hours, without placing any food inside.



In this first phase, because of the humidity evaporating from the insulating materials, the oven will give out unpleasant smells and fumes that will gradually disappear during the following operating cycles.

✓	Positioning checks
	Is the installation room adequate and compliant with regulations? (correct ventilation, maximum/minimum temperature, etc.)
	Is the appliance perfectly level?
	Is the appliance resting on the base underneath and is this suitable to support the weight of the oven?
	Have the minimum distances stated been complied with?
	Has the protective film been removed from the surfaces?
	Are there any non-compliant objects in the oven chamber (e.g. installation tools, user manuals, packaging, etc.)? If so, remove them!
✓	Electrical checks
	Does the mains voltage match the data on the rating plate?
	Do electric connections meet current regulations in the country of installation and follow the diagrams supplied?
✓	Miscellaneous
	Does the user have all the documentation relative to the oven?
	Has the user been correctly trained on the use and maintenance of the oven?



Linda Lewis Kitchens Ltd T/A LLK

3-5 Belgrave Industrial Estate

Honeywell Lane
Oldham, OL8 2JP 0161
633 5797

www.llkpizzapros.co.uk
sales@llkpizzapros.co.uk