

The Ameena Group Ltd

Suite 313

28 Old Brompton Road

London SW7 3SS

t: +44 (0)788 192 7267

w: theameenagroup.com

Rosamond House, Westminster Quarter, London SW

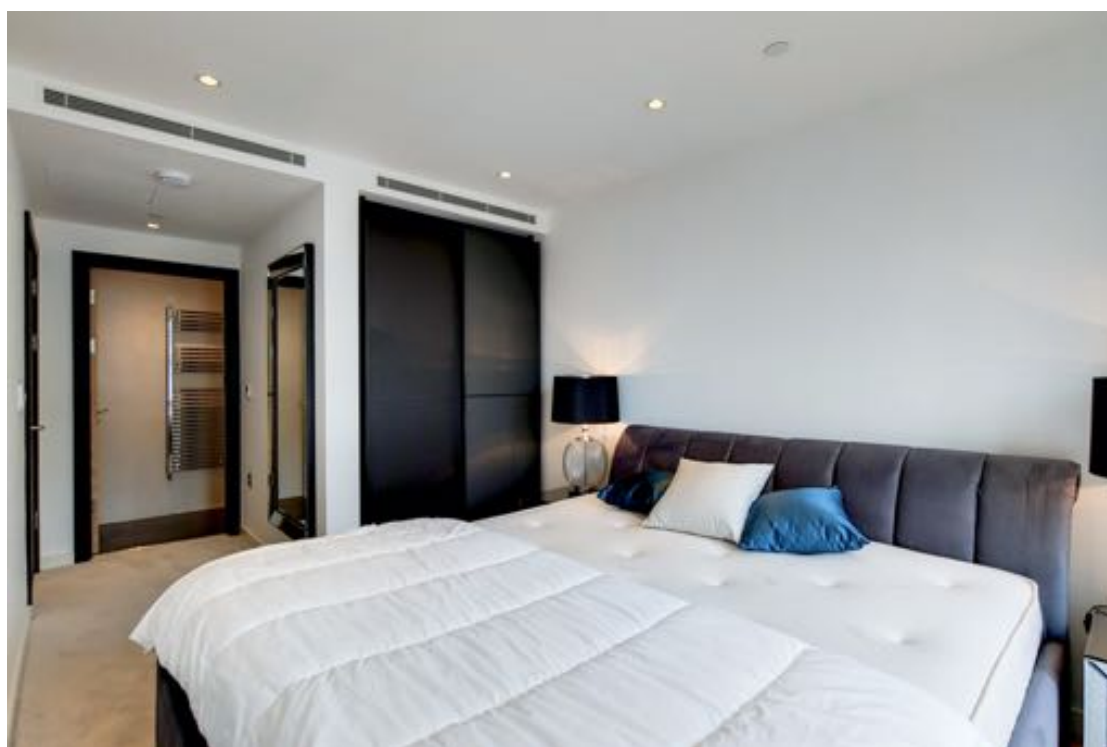
£1,295,000 Leasehold



- 2 Bedrooms • 2 Bathrooms • 855 sqft/ 79.2 sqm • 6th Floor • Winter Garden • Furnished • 24 hr Concierge • Gym •
- 990 + Year Lease • Lift • Communal Roof Terrace & Landscaped Courtyard •

This spacious 2 bedroom apartment is located on the 6th floor of this new development. Finished to the highest specifications and tastefully furnished, the apartment has a comfortable flow which suits long term living. Please note there is secure underground parking at the development, but availability would have to be confirmed with the building management.

Westminster Quarter is a new development located moments away from the Houses of Parliament and the River Thames. It boasts very strong transport links, with Westminster and St James Park Underground stations nearby. You also have the option of a short walk to Victoria for any retail needs.







No.13, 21, 29, 37, 42 & 47 CHADWICK HOUSE

2 BEDROOM | 2 BATHROOM



TOTAL INTERNAL AREA*		79.5M ²	855FT ²
LIVING / DINING	18'2" X 16'9"	5550MM X 5120MM	
KITCHEN	18'2" X 8'2"	5550MM X 2500MM	
MASTER BEDROOM	18'1" X 8'11"	5510MM X 2720MM	
BEDROOM 2	13'9" X 8'1"	4210MM X 2730MM	
BATHROOM	6'10" X 6'6"	2100MM X 1980MM	
WINTER GARDEN	10'11" X 5'8"	3350MM X 1750MM	

KEY
W WARDROBE
UC UTILITY CUPBOARD
SC STORAGE CUPBOARD NORTH



For more information call on

+44 (0) 20 3773 5759

or email at

ac@theameenagroup.com

We're members of the

