

Ameena

Rosamond House
Westminster Quarter,
London SW1



£1,295,000 (LEASEHOLD - 990+ YEARS)

2 BEDROOMS / 2 BATHROOMS

855 SQFT / 79.2 SQM

Overview

This elegant 2-bedroom apartment is situated on the 6th floor of a modern development. It is finished to the highest standards and tastefully furnished, offering a seamless flow ideal for long-term living. Secure underground parking is available, subject to confirmation with building management.





Highlights

- 6th floor
- Winter garden
- Furnished
- 24hr concierge
- Gym
- Lift
- Communal roof terrace and landscape courtyard

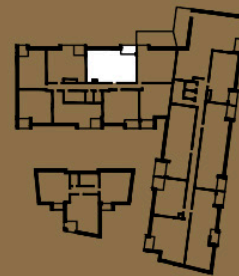
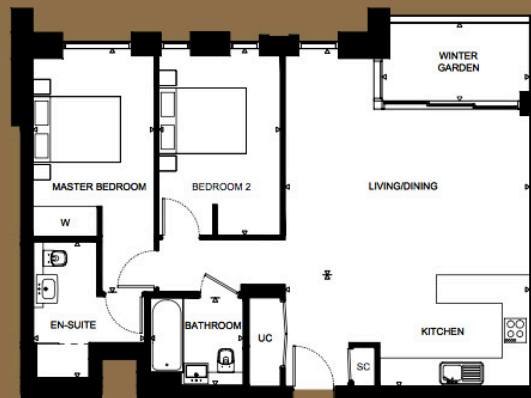


Floorplan

- First Floor Apartment
- 2 Bedrooms
- 2 Bathrooms
- 1 Guest WC
- 1,053 sqft/97.85 sqm

No.13, 21, 29, 37, 42 & 47 CHADWICK HOUSE

2 BEDROOM | 2 BATHROOM



TOTAL INTERNAL AREA*	79.5M ²	855FT ²
LIVING / DINING	18'2" X 16'9"	5550MM X 5120MM
KITCHEN	18'2" X 8'2"	5550MM X 2500MM
MASTER BEDROOM	18'1" X 8'11"	5510MM X 2720MM
BEDROOM 2	13'9" X 8'1"	4210MM X 2730MM
BATHROOM	6'10" X 6'6"	2100MM X 1980MM
WINTER GARDEN	10'11" X 5'8"	3350MM X 1750MM

KEY
 W WARDROBE
 UC UTILITY CUPBOARD
 SC STORAGE CUPBOARD



NORTH

*For further inquiries about
this property...*

CALL US ON

+44 (0)20 3773 5759

OR EMAIL US

ac@theameenagroup.com

The Ameena Group Ltd
Suite 313
28 Old Brompton Road
London
SW7 3SS

In accordance with the Property Mis-Description Act 1991, the following details have been prepared in good faith, and are not intended to constitute part of an offer or contract. Any information contained herein (whether in the text, plans or photographs) is given in good faith but should not be relied upon as being a statement of representation of fact. Nothing in these Particulars shall be deemed to be a statement that the property is in good condition or otherwise nor that any services or facilities are in good working order. Any measurements of distances referred to herein are approximate only. April 2026