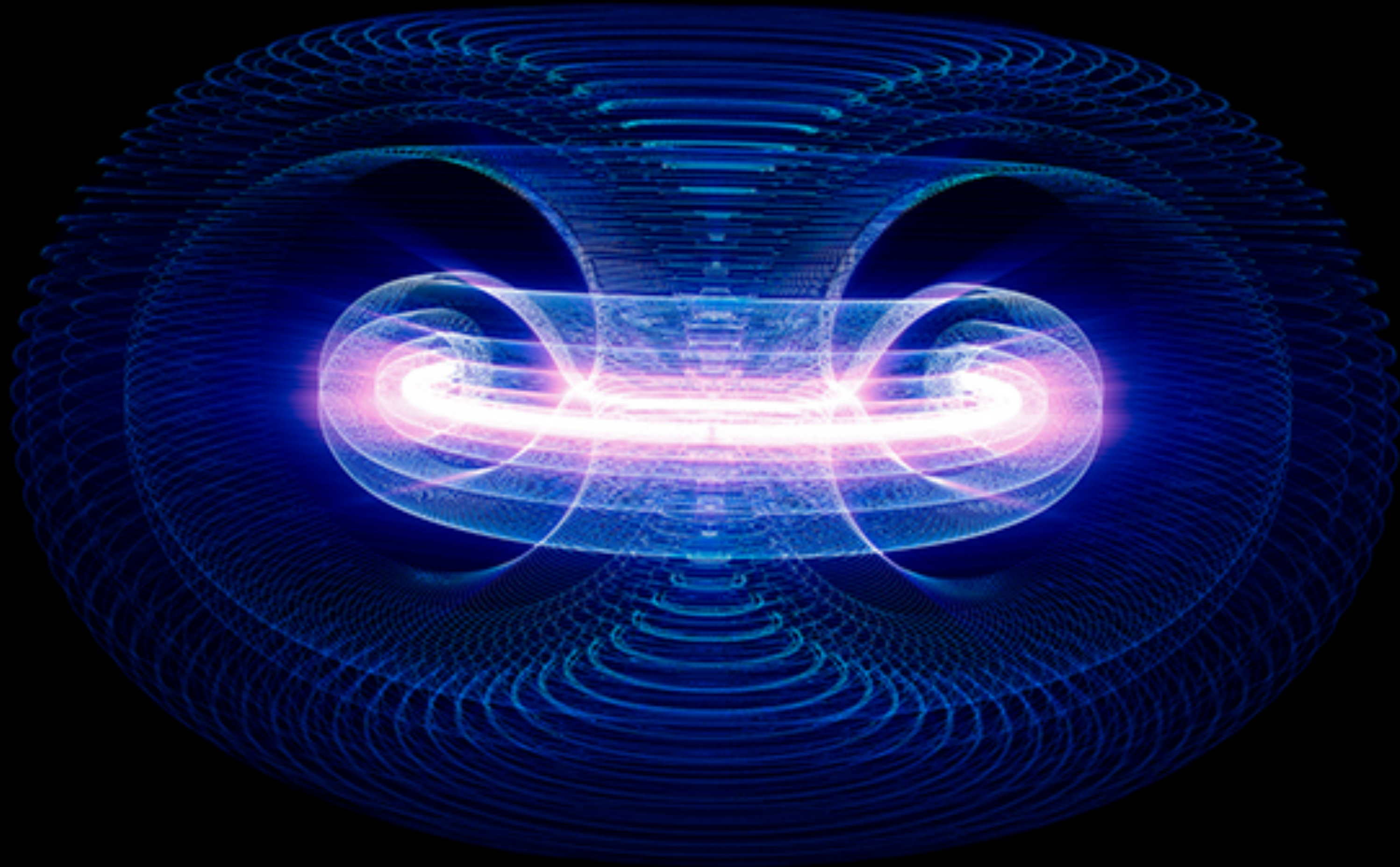


ASCENSION DYNAMICS

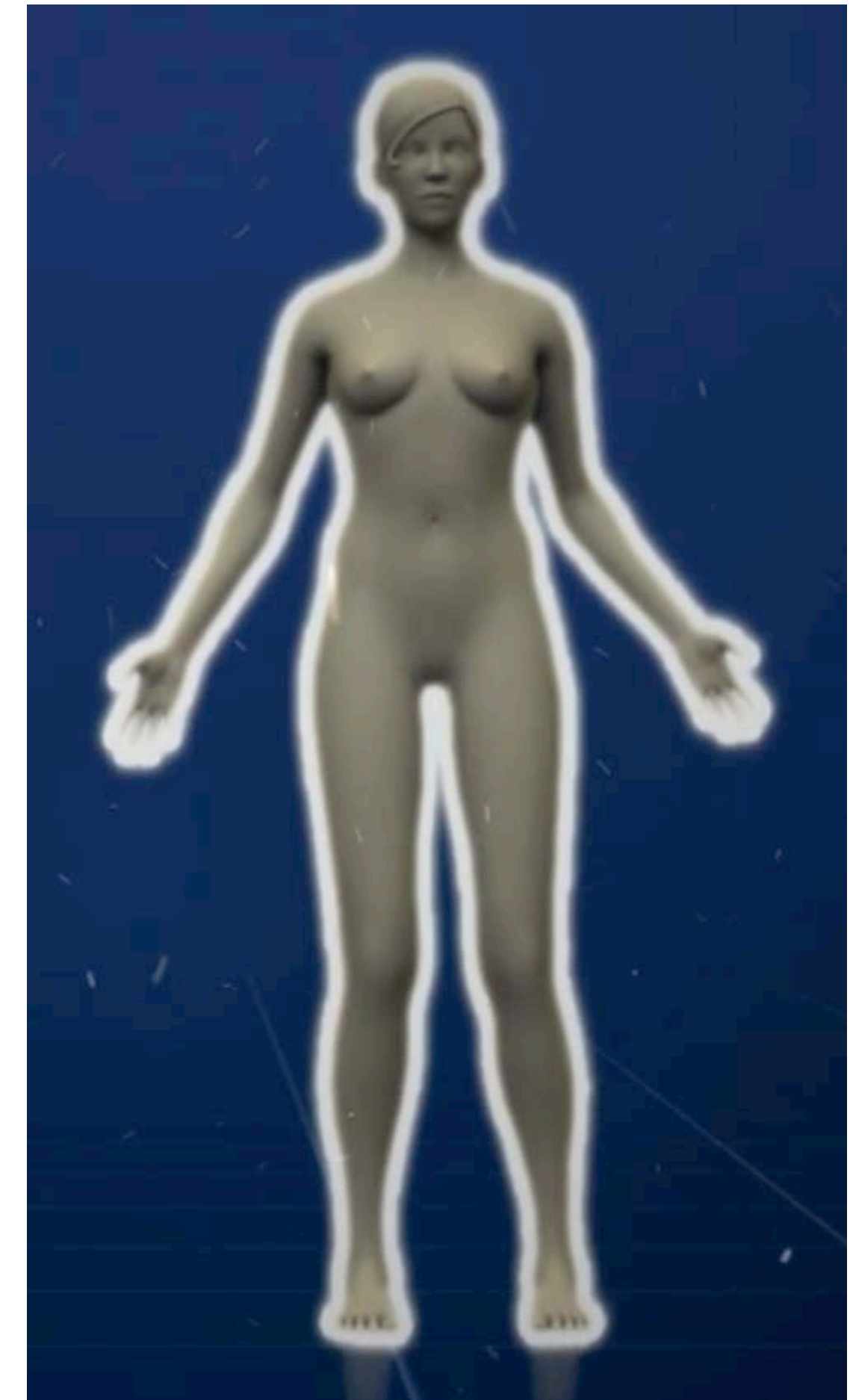


Energy Fields



The Human Energy Field or Auric Field

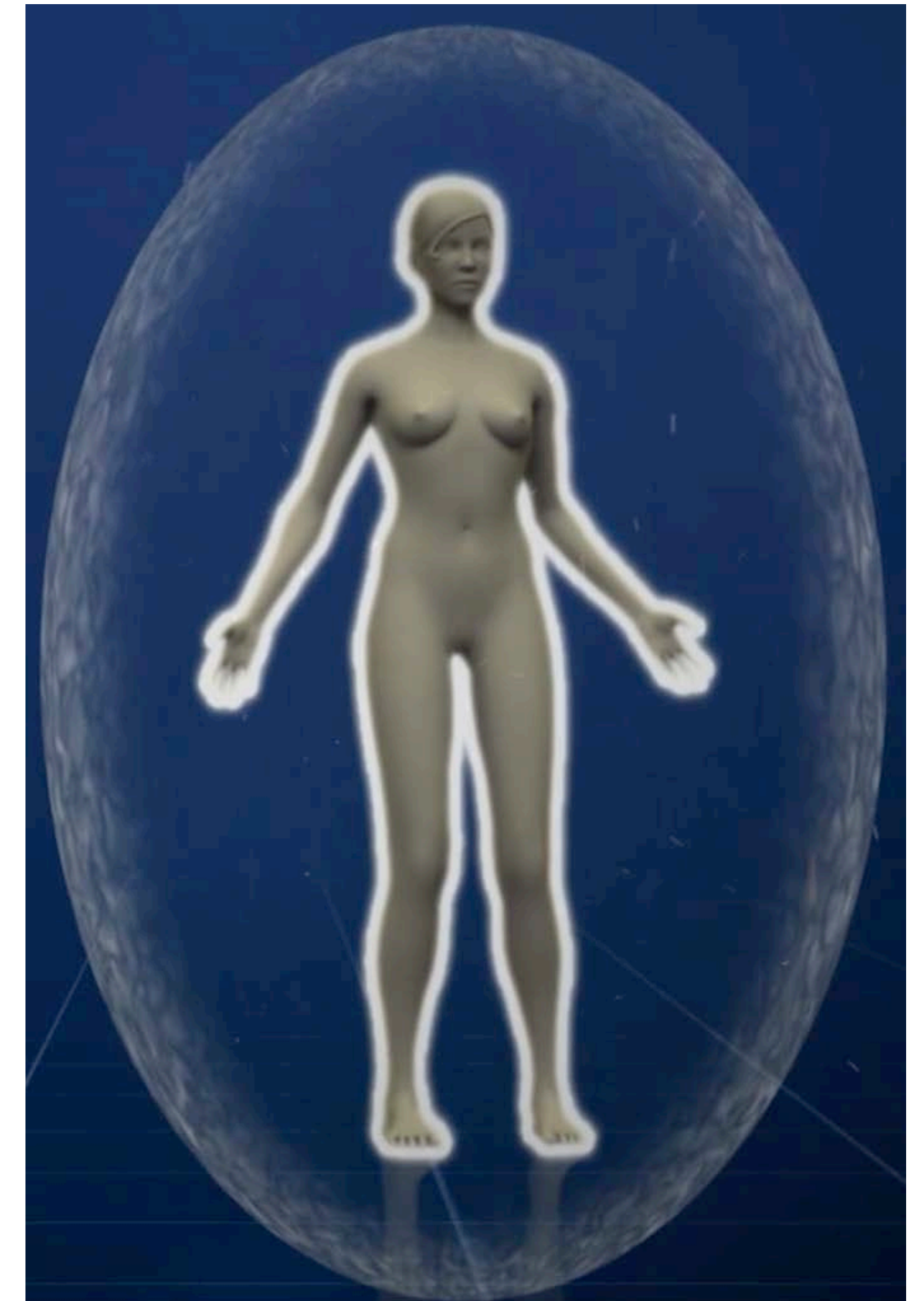
Primary Auric Field - The primary auric field is normally 3-6 inches from the physical body and has a vibrant, radiant quality that is whitish in color. It begins right up against the skin.



Source: GAIA - Books - *Energy Medicine Primer, Awakening the Science of the Auric Field & Chakras; Fields of Light, 65 Images of the Auric Field, Chakras & Mental, Emotional, & Physical Relationships.*

The Human Energy Field or Auric Field

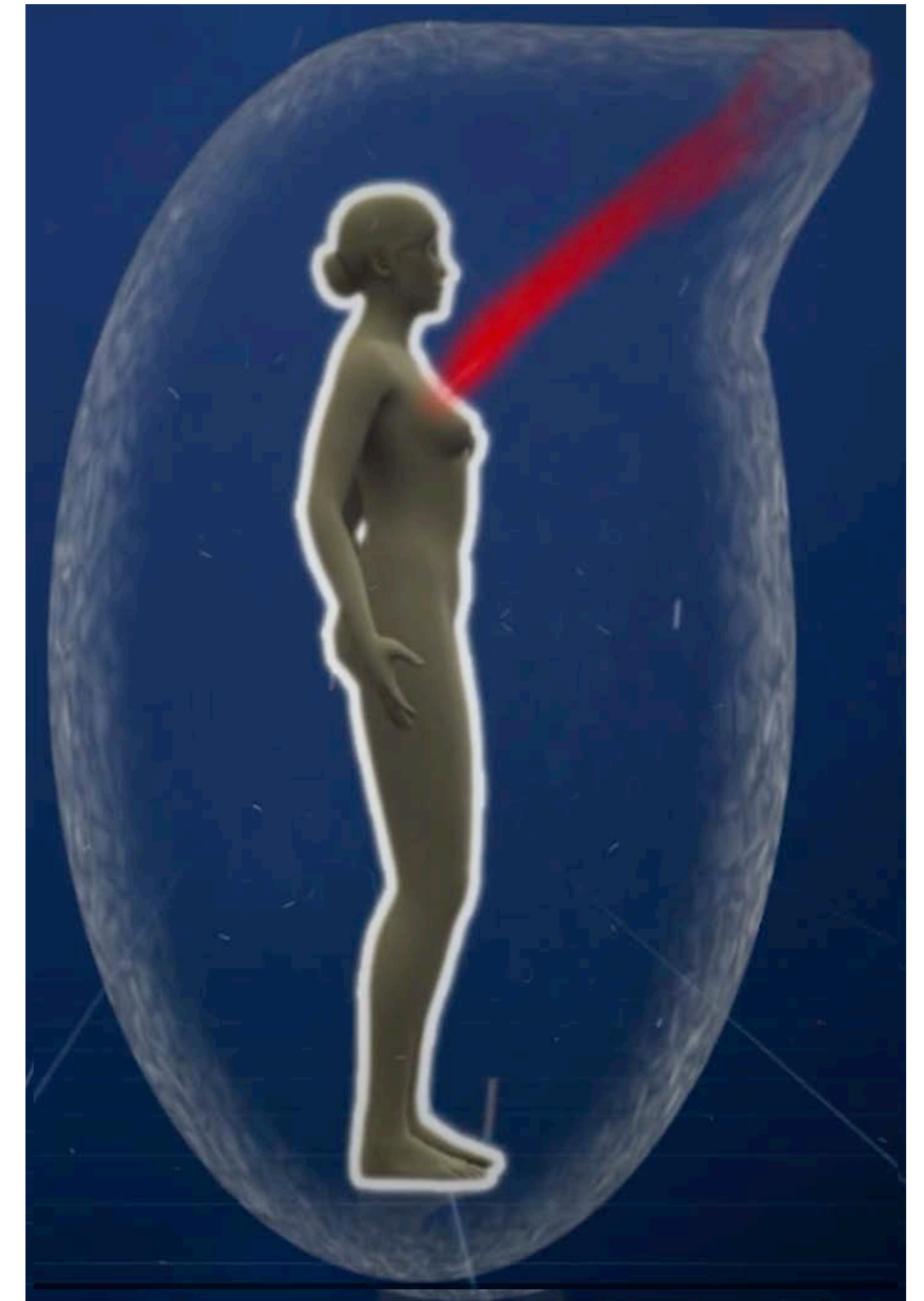
Secondary Auric Field - is where colors within the auric field are visible. The colors pertain to emotional, physical, mental, and relational components of our lives. Colors, the chakra system, energy connections, and the other meridian system are within this secondary auric field.



Source: GAIA - Books - *Energy Medicine Primer, Awakening the Science of the Auric Field & Chakras; Fields of Light, 65 Images of the Auric Field, Chakras & Mental, Emotional, & Physical Relationships.*

The Human Energy Field or Auric Field

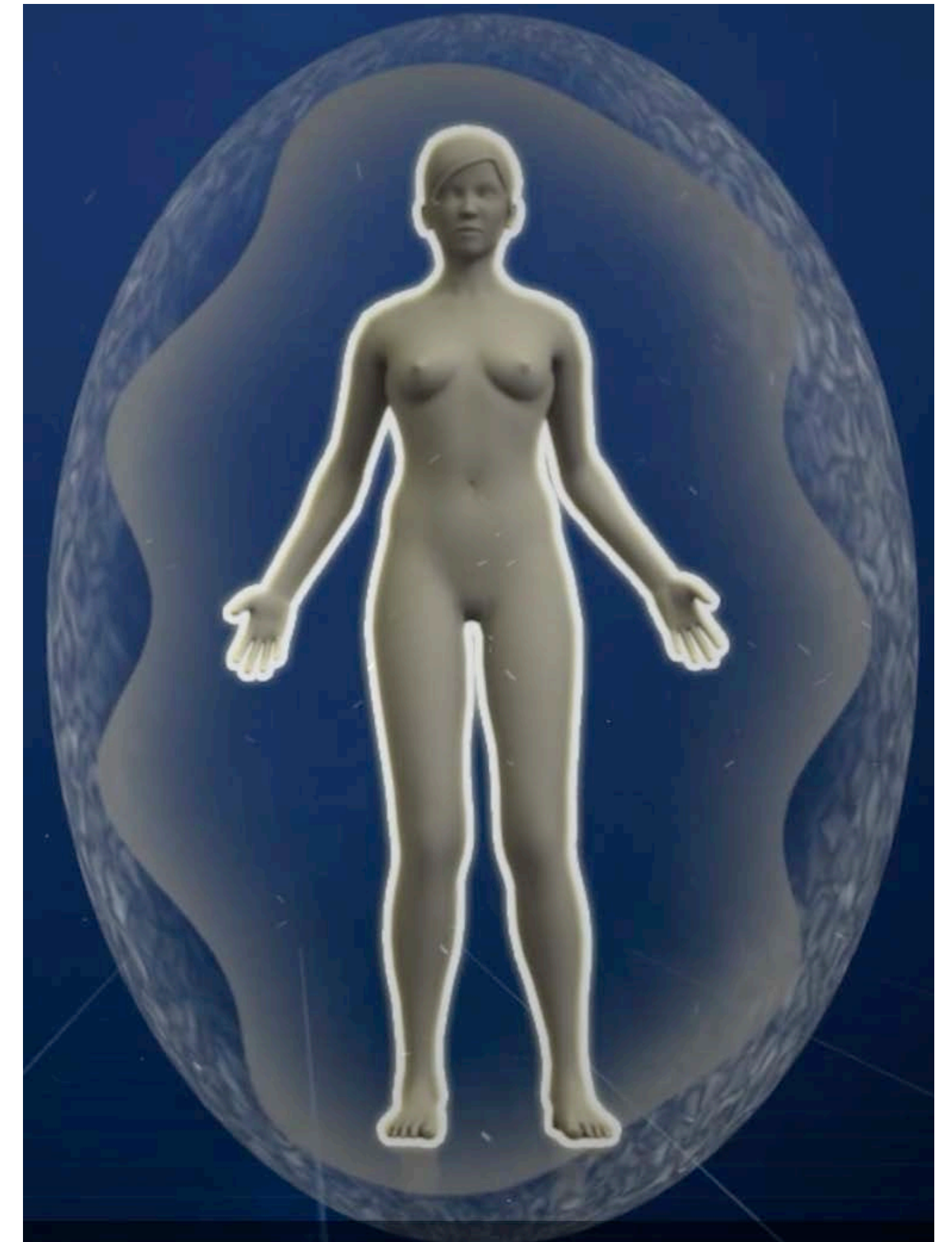
Pain - Physical or emotional pain manifests in the auric field as radiation of red energy as a flare or surge penetrating the aura.



Source: GAIA - Books - *Energy Medicine Primer, Awakening the Science of the Auric Field & Chakras; Fields of Light, 65 Images of the Auric Field, Chakras & Mental, Emotional, & Physical Relationships.*

The Human Energy Field or Auric Field

Shame, Blame & Guilt - are powerful contaminants within the energy field. It can be internalized or directed towards another person for them to internalize. They can function as an addiction and hold a powerful negative energy that prevails in its oppression.



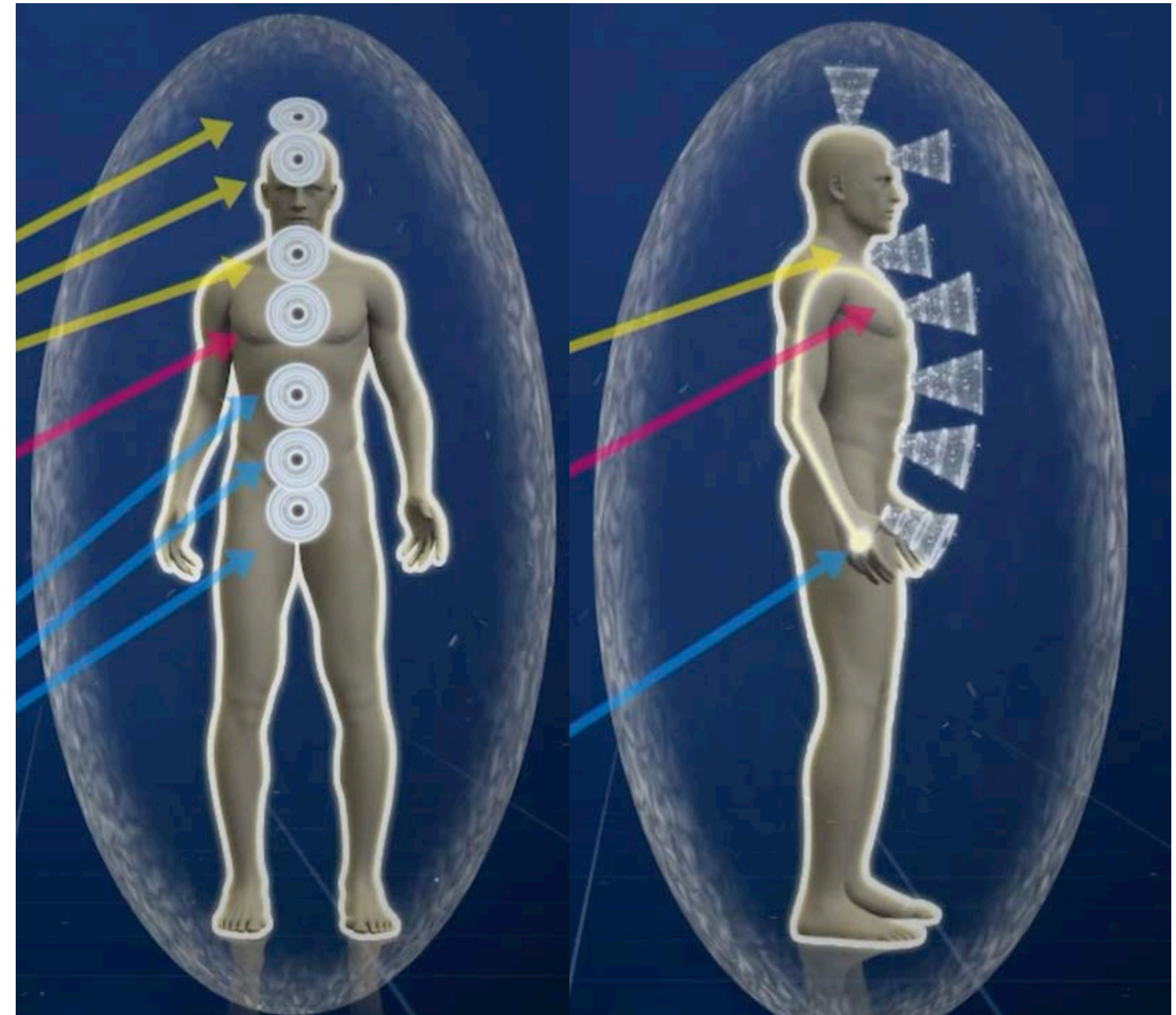
Source: GAIA - Books - *Energy Medicine Primer, Awakening the Science of the Auric Field & Chakras; Fields of Light, 65 Images of the Auric Field, Chakras & Mental, Emotional, & Physical Relationships.*

The Human Energy Field or Auric Field

The Chakras - The three chakras above the heart connect to our higher self, our guidance, and inspiration.

The heart chakra filters & blends the energies above and below the heart. How we integrate these energies emanates through our voice and hands.

The three chakras below the heart are connected to the earth.



Source: GAIA - Books - *Energy Medicine Primer, Awakening the Science of the Auric Field & Chakras; Fields of Light, 65 Images of the Auric Field, Chakras & Mental, Emotional, & Physical Relationships.*

Electromagnetic Field

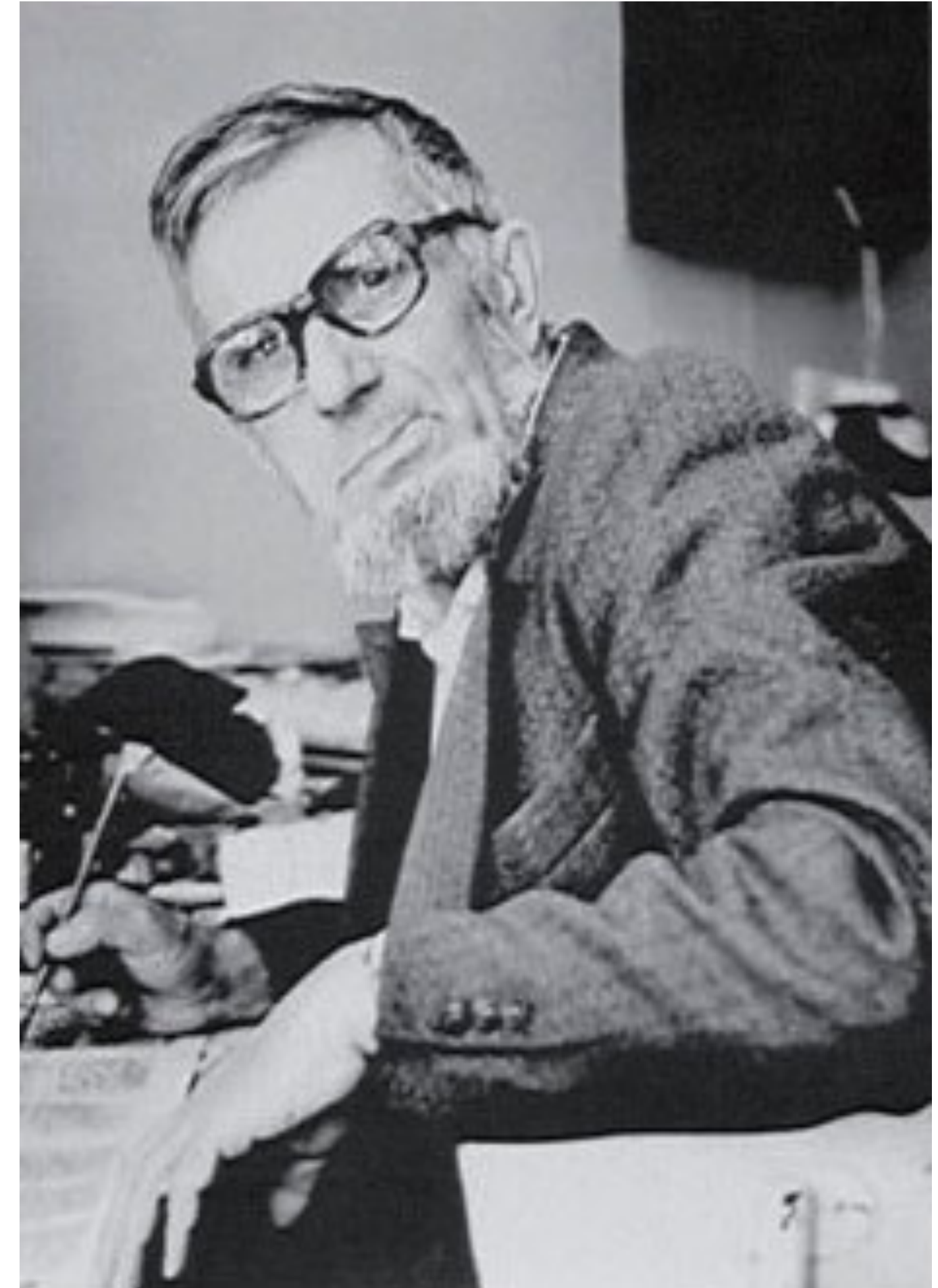
Electric magnetic field showing iron filings rotating once an electrical charge is run through the magnet wire coil.



The Science of Energy Fields

Russian Scientist, Viktor Grebennikov

A scientist by the name of Viktor Grebennikov discovered that bees tried to get to a hive they could not see behind a 2 foot brick wall. This could not be explained by electromagnetic energy or by pheromones. It suggested that the hive had its own wave function that the bees were tuned to to detect where the hive was.

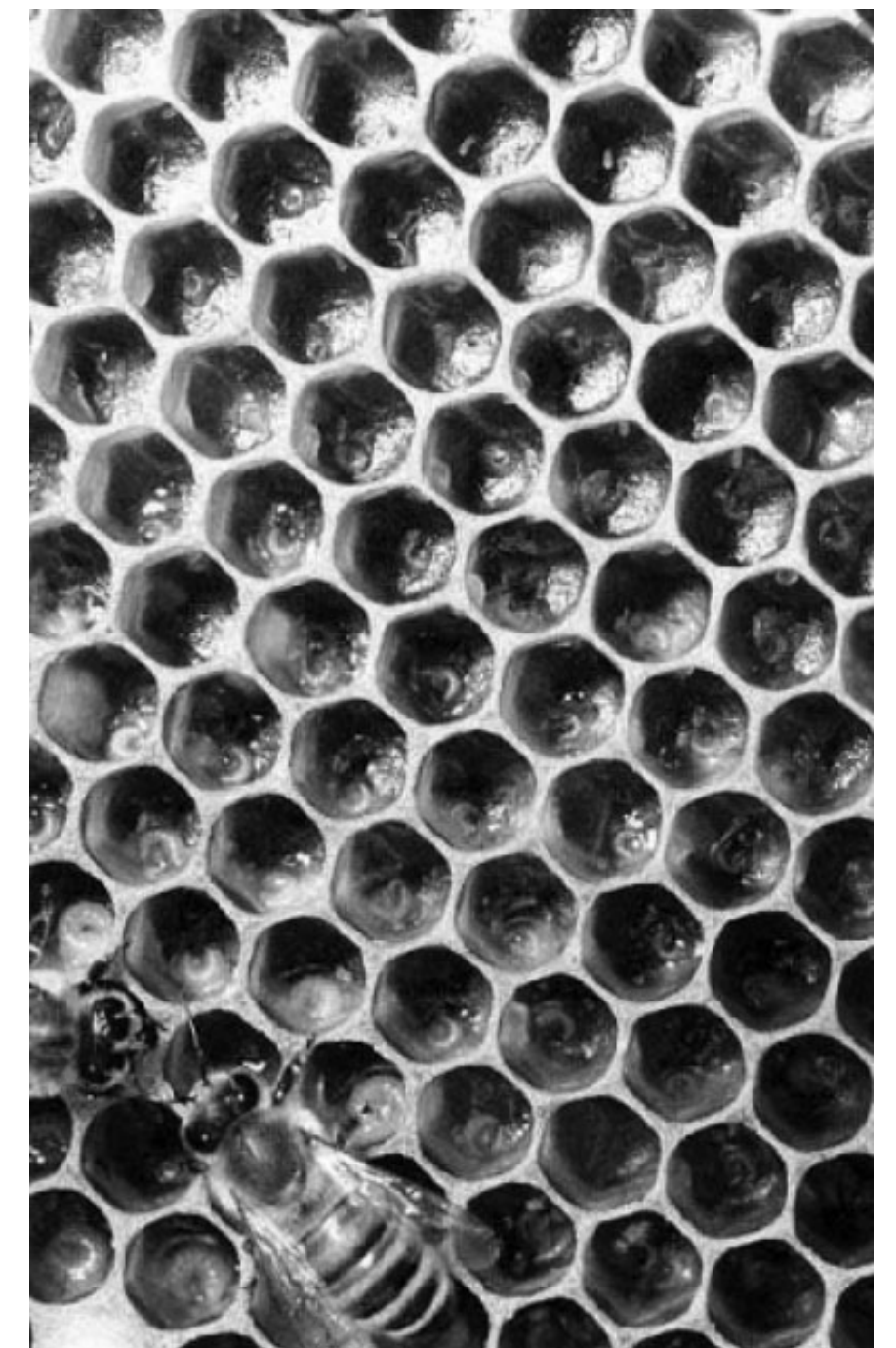
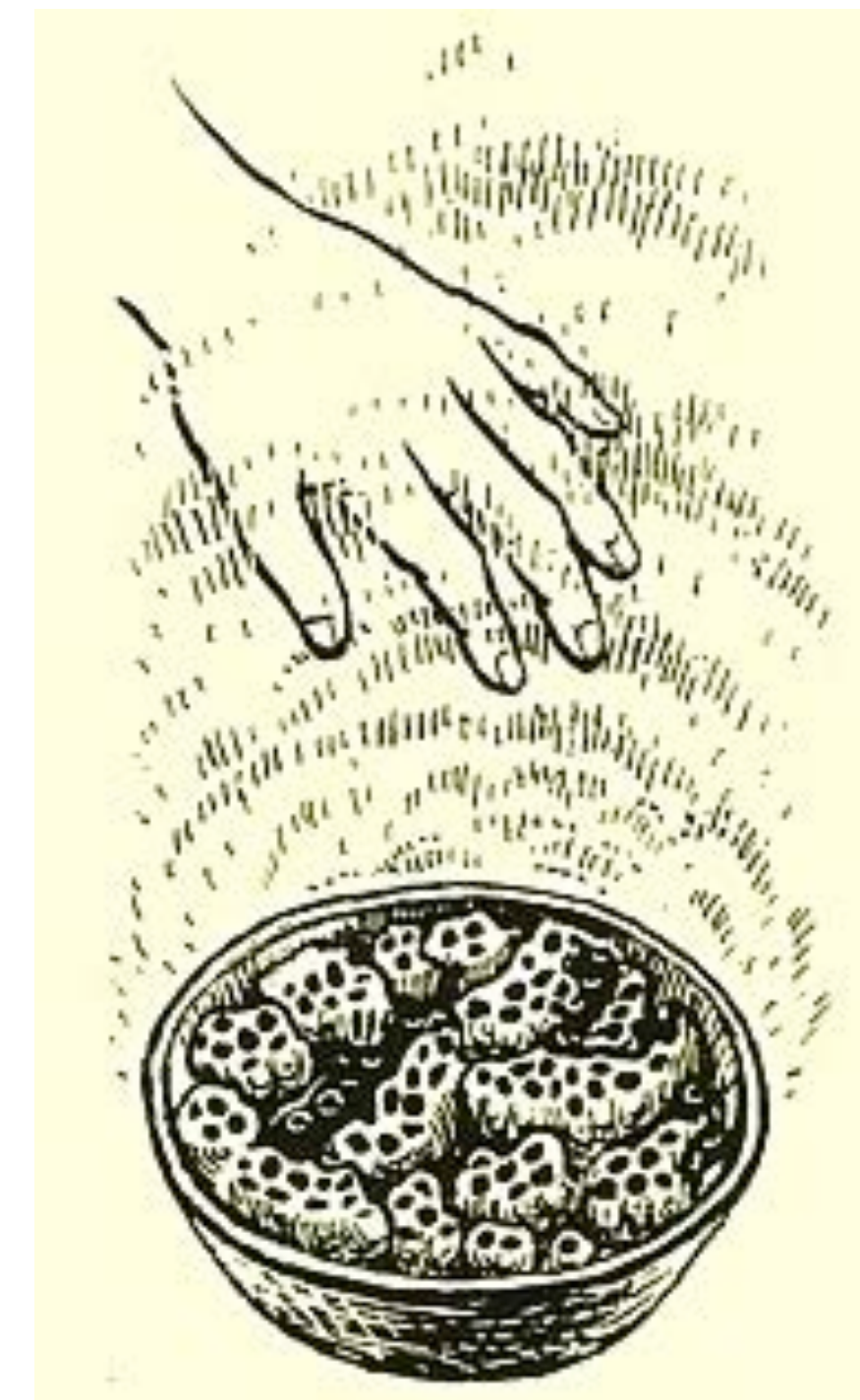


Source: Scientist - *Viktor Grebennikov (discovered natural antigravity and energy fields)*

The Science of Energy Fields

Russian Scientist, Viktor Grebennikov

He also noticed that when hovering his hand over a bee hive and also a leaf-cutter nest temperature changes and tingling sensations were felt where known instruments could not detect. He found that the cause of these sensations were not from a biological field, but from the size, shape, number, and arrangement of caverns formed by any group of solid objects. He called it the Cavernous Structural Effect (CSE).



Source: Scientist - *Viktor Grebennikov (discovered natural antigravity and energy fields)*

The Science of Energy Fields

Russian Scientist, Viktor Grebennikov

Side note: He also figured out anti gravity through a separate discovery with beetles. He found that beetle shells would move when pieces of metal were close.



Source: Scientist - Viktor Grebennikov (discovered natural antigravity and energy fields)

The Science of Energy Fields

Russian Scientist, Viktor Grebennikov

With these beetle shells Grebennikov created an anti gravity platform.

Hardly a side note.

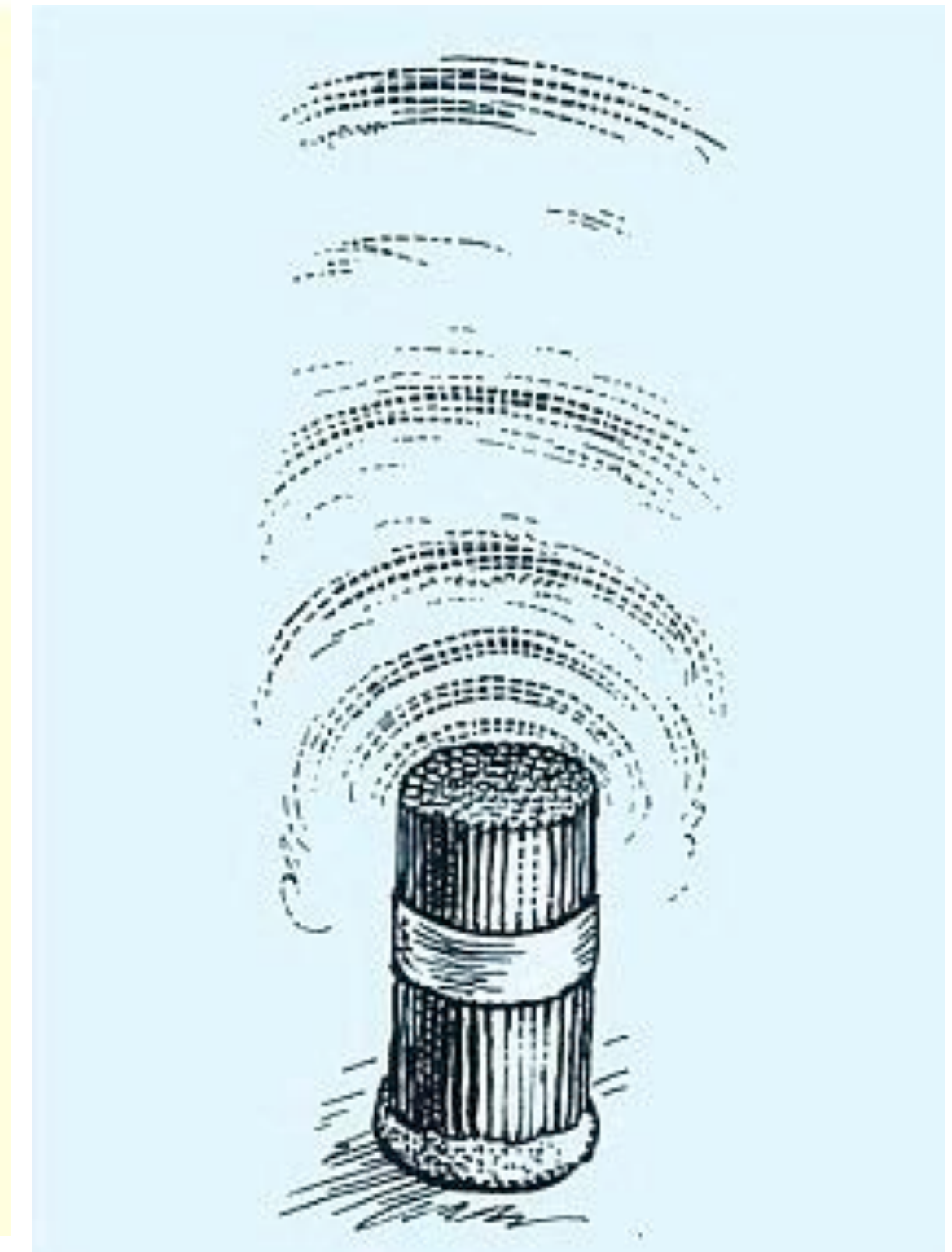
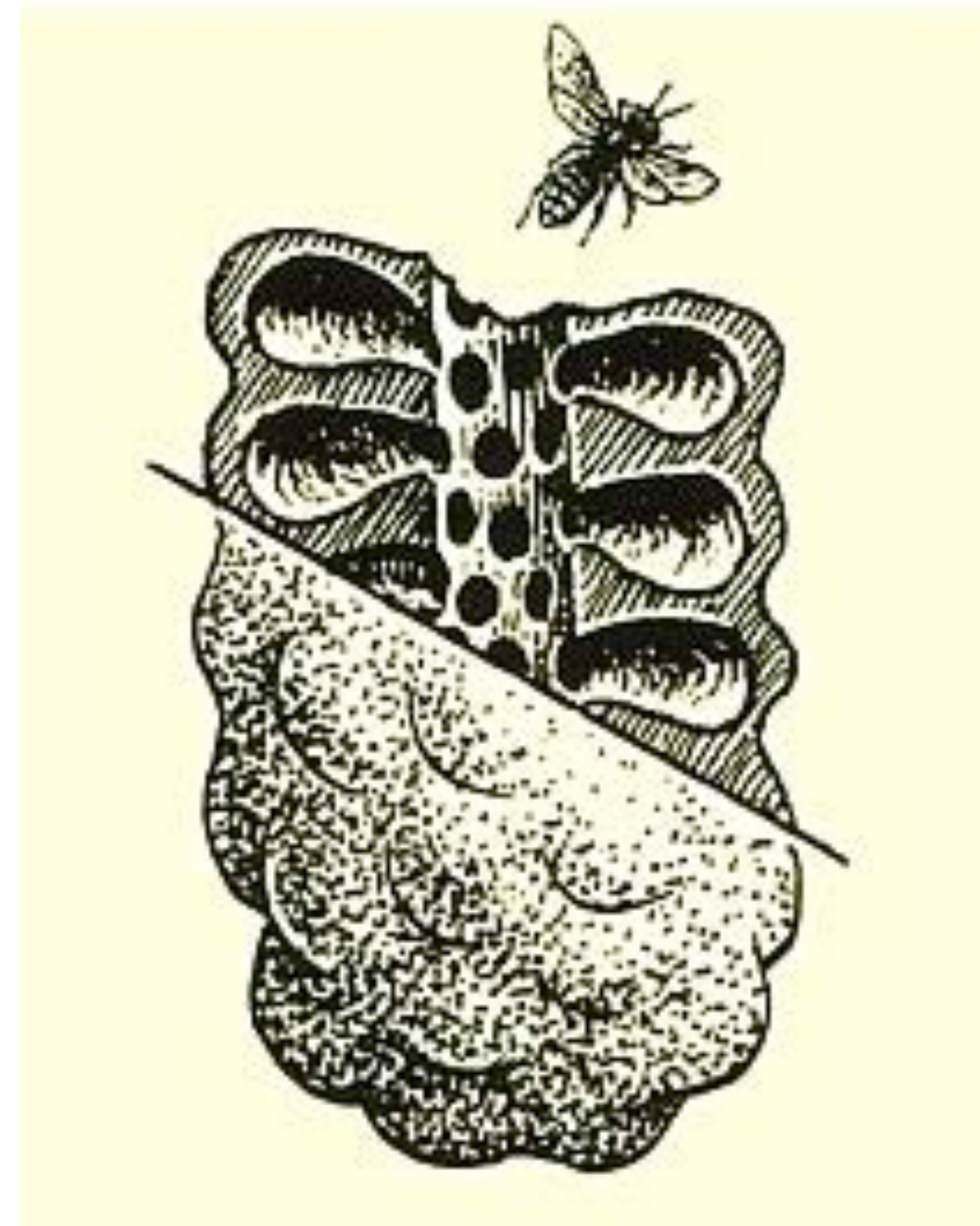


Source: Scientist - *Viktor Grebennikov (discovered natural antigravity and energy fields)*

The Science of Energy Fields

Russian Scientist, Viktor Grebennikov

It turns out the CSE zone inhibits the growth of saprophytic soil bacteria, yeast and other cultures, as well as wheat grain germination. Bee hives do not want bacteria, algae or roots growing in them as these bees rely on these hives for survival. Adult bees are much more active in this field suggesting that they benefit from it.



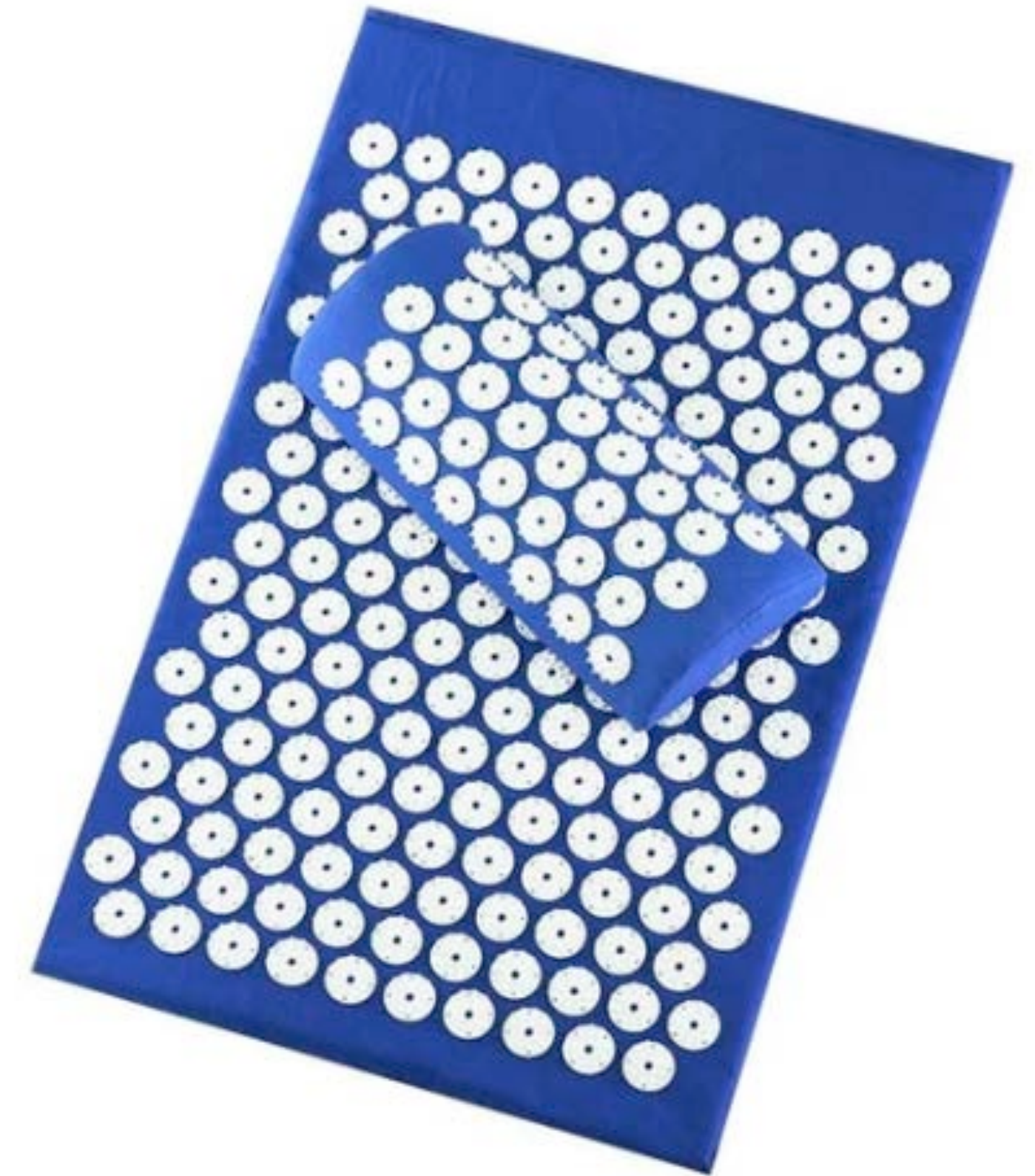
Source: Scientist - *Viktor Grebennikov (discovered natural antigravity and energy fields)*

The Science of Energy Fields

Russian Scientist, Viktor Grebennikov

Ever heard of Acupuncture Mats? These are known to heal people of pain.

Grebennikov explained the more the shapes or space around an object are repeated in an arrangement together the more amplified the field becomes.



Source: Scientist - *Viktor Grebennikov (discovered natural antigravity and energy fields)*

The Science of Energy Fields

Russian Scientist, Viktor Grebennikov

Thermal Wear are known to insulate body heat. There could be a connection here - the pattern could be holding in energy keeping the person extra warm.

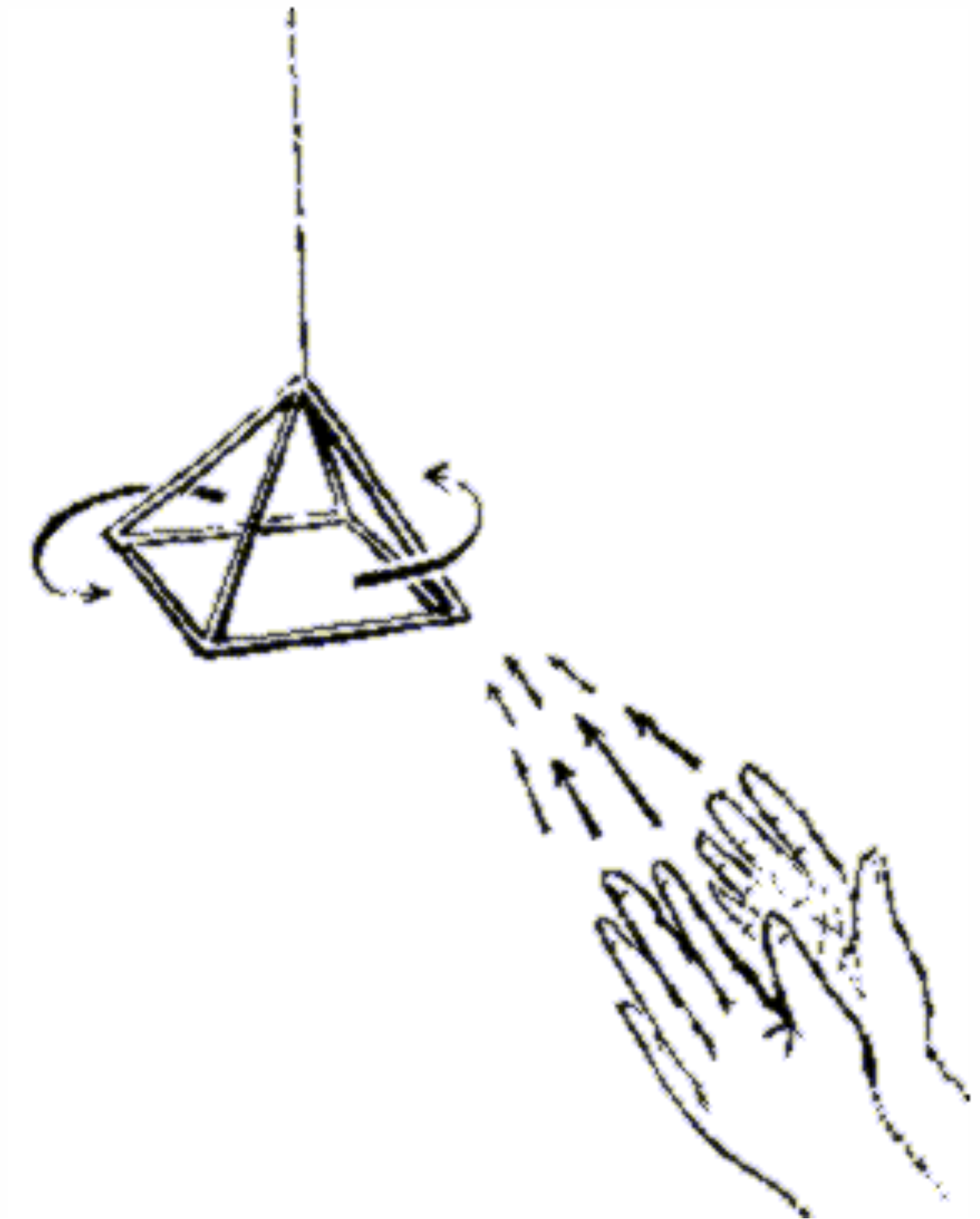


Source: Scientist - *Viktor Grebennikov (discovered natural antigravity and energy fields)*

Not just bee hives and beetle shells

We don't have to go out and buy bee hives or steal beetle shells. You can do this with other objects. Even our own hands. We have small pores (cavities) in our hands.

You can hang a pyramid made out of straws and move it with your hands without touching it. This requires practice, but it can be done.



**picture a cylinder shape of energy
coming from your hands**

Pyramid Power

The pyramid itself acts like a funnel and has been known to have healing benefits. The atoms that make up the pyramid are being fed by a fluid like energy. As it flows, it creates a current. As the energy flows in, it also flows out creating a whirlpool-like effect.



Detecting Energy Fields

- Physical objects:** aiming a bee hive at a burnt twig (carbon) in a glass jar and it will rotate. (Grebennikov)
- Your own mind/body:** seeing Infrared, ex) knowing if someone is looking at you etc.
- Technological Instruments:** Kirlian Photography, Aura Imaging, Dowsing Rods