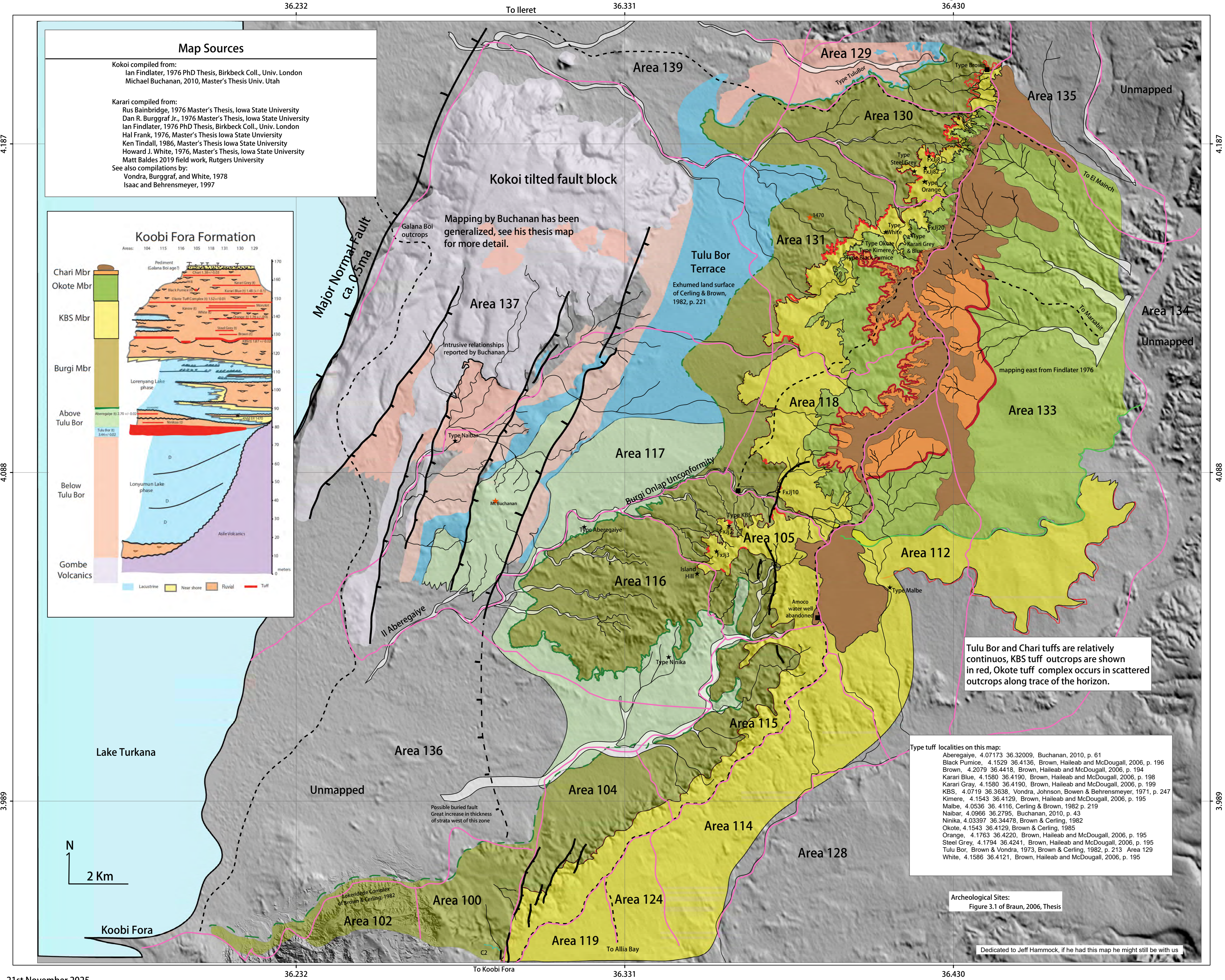


Geologic Map of the Kokoi and Karari Ridges showing Koobi Fora Fm Members

Koobi Fora, East Turkana, Kenya



Geologic Map of the Karari Ridge

Based on mapping by Bainbridge, Burggraf, Frank, and White, 1976 and Tindall, 1986.

See also compilations by Vondra, Burggraf, and White, 1978, and by Isaac and Behrensmeyer, 1997.

Tulu Bor and Chari tuffs are relatively continuous, KBS tuff outcrops are shown in red, Okote tuff occurs in scattered outcrops along trace of the horizon.

