



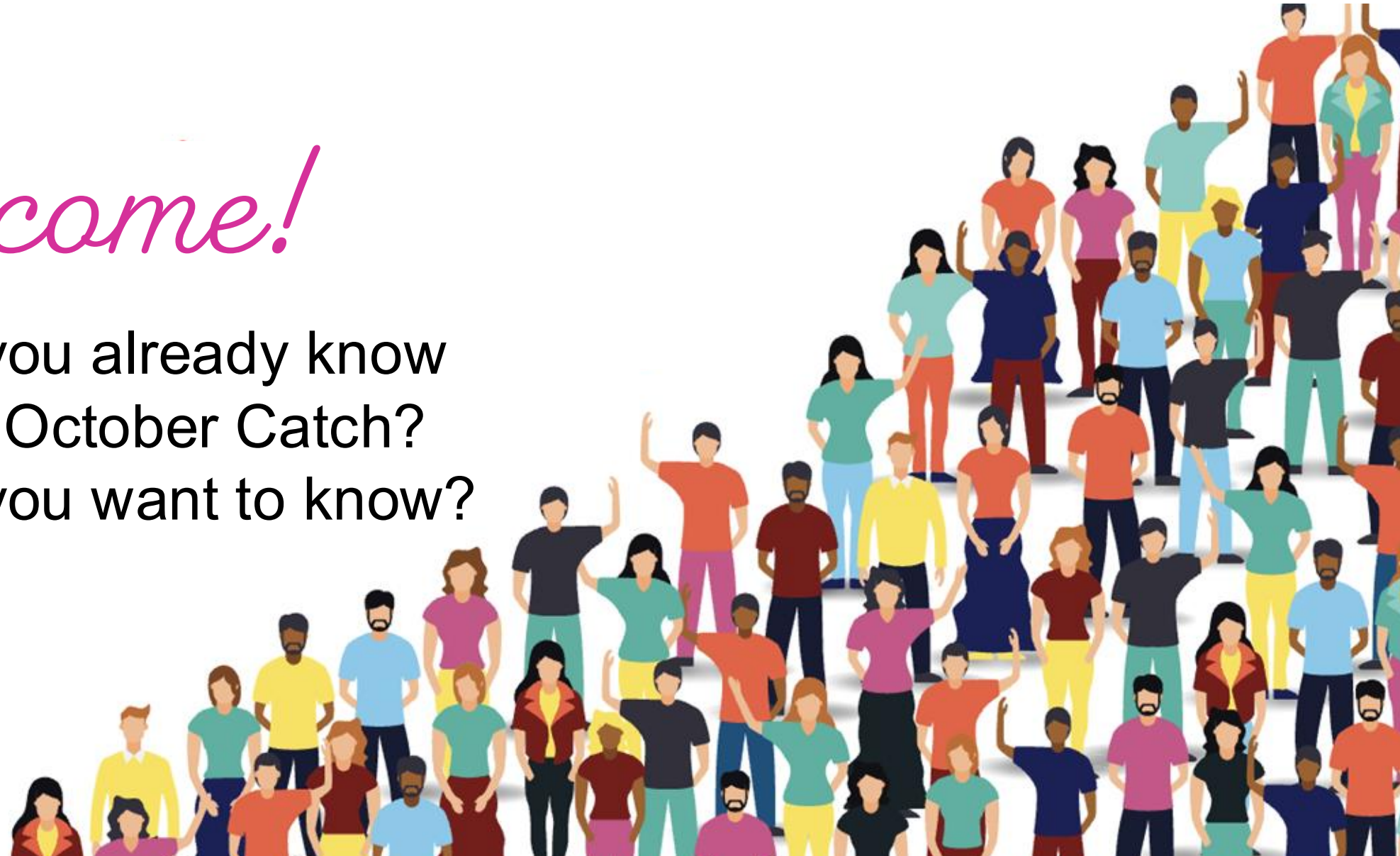
PBISApps Community

The October Catch

Danielle Triplett, M.Ed.
Senior Research Assistant and PBISApps Trainer
University of Oregon

Welcome!

What do you already know
about the October Catch?
What do you want to know?



A Little Humor!



mr_phlindsay_sped ✓

Original audio

**Blood Borne Pathogen
Training**

Topic: The October Catch

1. Research findings
2. What is the October Catch?
3. Data scenarios and discussion



50% of students who received 6 or more total ODRs during the course of the year already received 2 or more ODRs by the end of October

79% had 2 or more ODRs by the end of December

School Psychology Review,
2010, Volume 39, No. 3, pp. 380–394

Establishing Research-Based Trajectories of Office Discipline Referrals for Individual Students

Kent McIntosh
University of British Columbia

Jennifer L. Frank
University of Oregon

Scott A. Spaulding
University of Washington

We Already Know the Kids Who Need Support!

- ✓ If you knew by the end of October you could have identified half of the students who ended the year with 6 or more referrals, wouldn't you?
- ✓ The number of ODRs students receive by the end of October is a highly accurate predictor of their cumulative ODR trajectory through the remainder of the year.



What is The October Catch?

It is once again time for the October Catch! No, we are not talking about Fall seafood! To be sure, this is not so much about “Catch and Release” as it is about “Catch and Support!” The October Catch is a decision rule that is based on research demonstrating that students with **two** or more Office Discipline Referrals (ODRs) by October are on a trajectory for having **six** or more ODRs by the end of the year. By identifying and referring kiddos with two or more ODRs by October, teams can catch and support these kids early in the year, making it easier to change the trajectory for these students.



MO SW-PBS
Missouri Schoolwide Positive Behavior Support

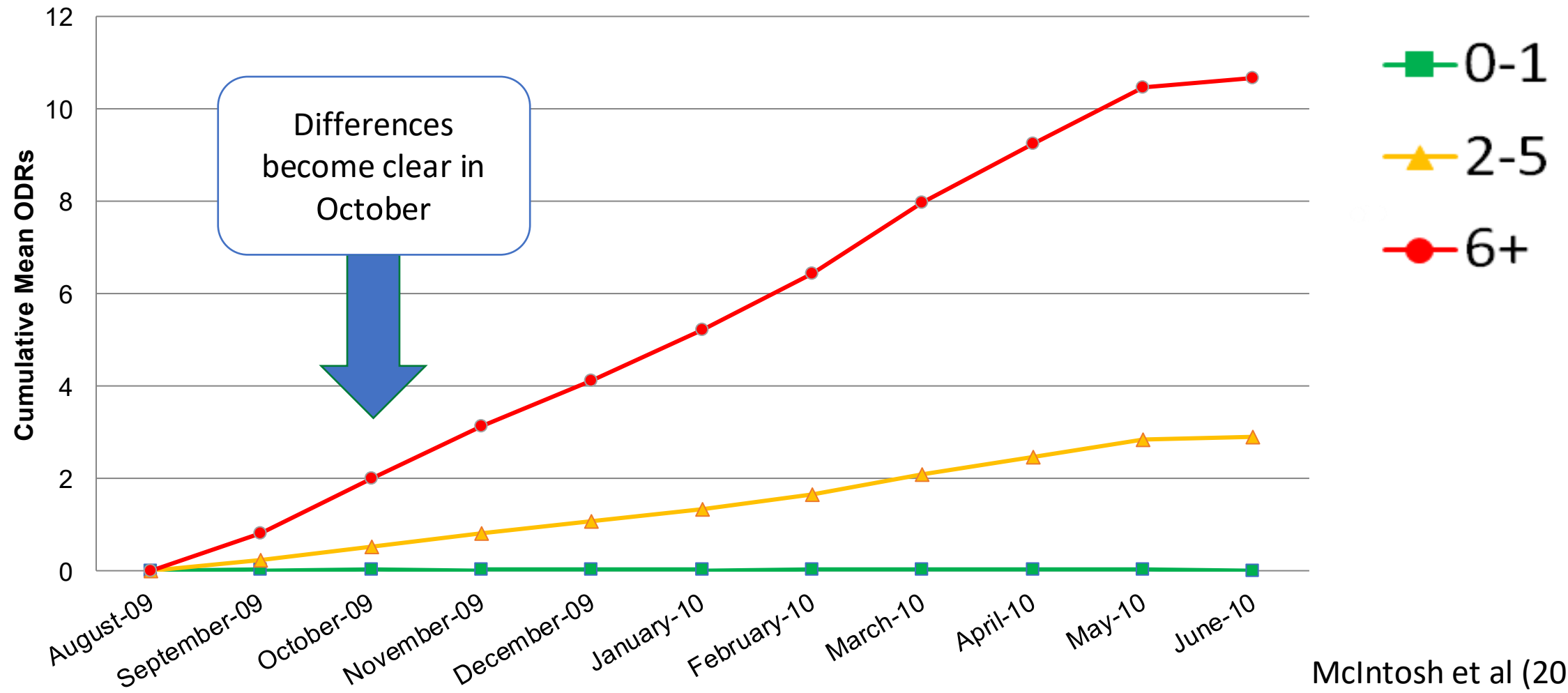
October Questions to Ask

- What you know about each student?
- Do you have additional screening data available to you?
- What are the targeted supports available in your building?
- Which of the students in this report would benefit from enrollment in a targeted intervention?

- How has their referral trajectory changed or not?
- If your school has a Check-In Check-Out program, were any students enrolled in October?
- What do their data in CICO-SWIS tell you?
- Is there additional support needed?

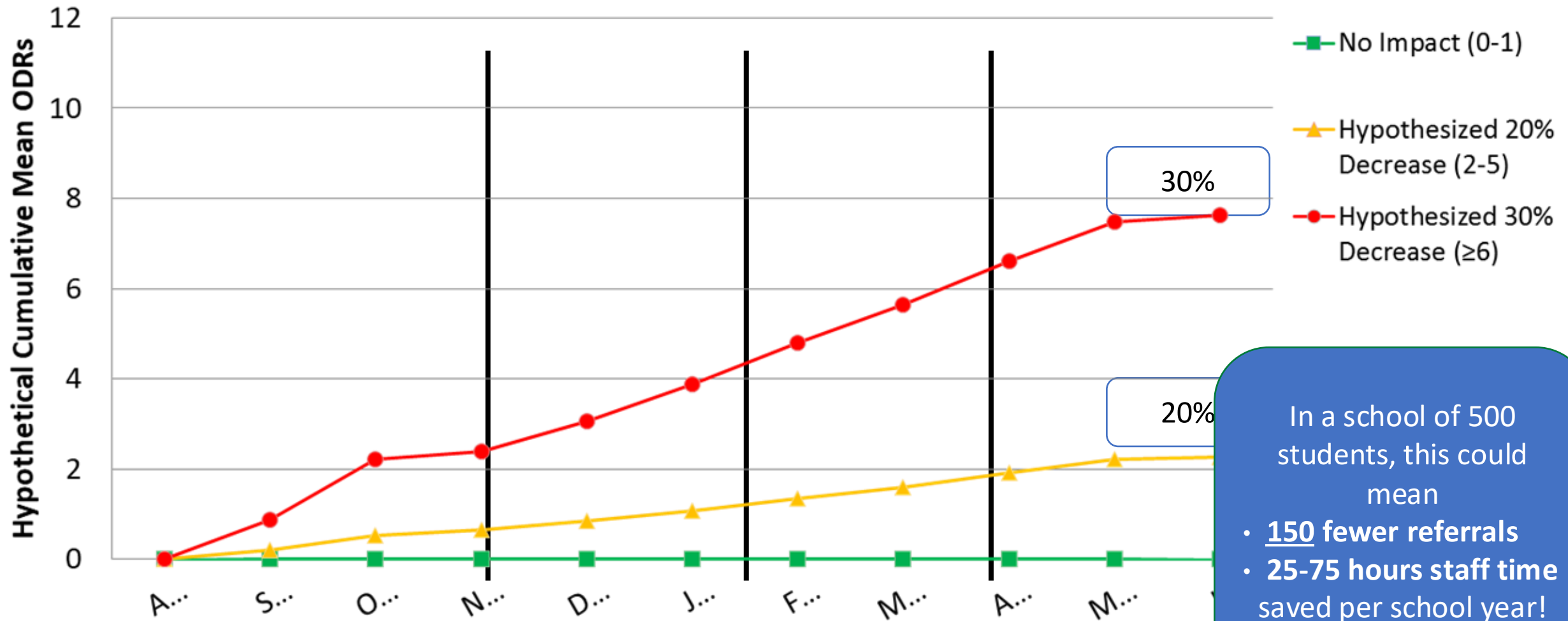
When should schools start screening?

Cumulative Mean ODRs Per Month for Elementary Schools



The “October Catch” Possibilities

Hypothesized Impact of October Catch



You are prepping for a Tier 1 Leadership Team meeting. Take inventory of the targeted supports in the building. What is in place? What is needed?

The school you're coaching does not enter motivation consistently. Explain to the team why this is valuable and how it works with the October Catch.

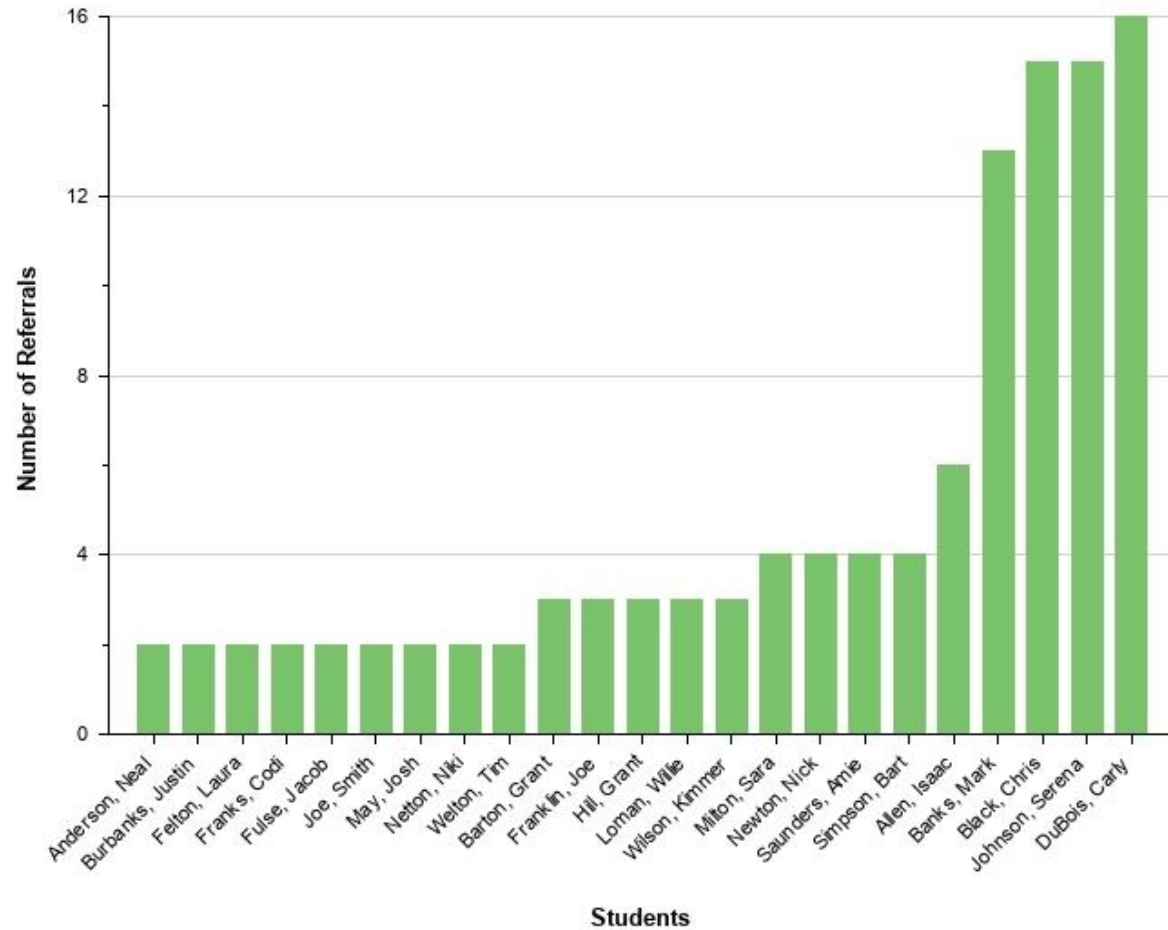
SWIS data shows that 64 students have 2+ ODRs as of today. How do you guide the team's discussion to plan next steps and support?

Data Scenario

Referrals by Student

CONFIDENTIAL

All, Aug 1, 2025 - Oct 16, 2025, At Least 2 Referrals



Resources: Research Findings

Abstract.

The purpose of this study was to examine the technical (psychometric) adequacy of office discipline referrals (ODRs) as a behavioral assessment tool for individual student, data-based decision making within a problem-solving model. Participants were 990,908 students in 2,509 elementary schools. Students were grouped into ODR cut points of 0–1, 2–5, and 6 or more total ODRs. Descriptive analyses indicated consistent mean ODR growth trajectories for each group. Logistic regression analyses showed that intermediate cut points (1 ODR, 2 or more ODRs) were moderately accurate in predicting total ODRs received, and accuracy increased throughout the fall. Specific problem behaviors were less predictive of total ODRs, although adding specific behaviors to intermediate cut points enhanced prediction to some extent. Results are discussed in terms of using ODRs to identify students in need of intervention and monitor progress.

McIntosh, K., Frank, J. L., & Spaulding, S. A. (2010). Establishing Research-Based Trajectories of Office Discipline Referrals for Individual Students. *School Psychology Review*, 39(3), 380–394. <https://doi.org/10.1080/02796015.2010.12087759>



TEACH BY DESIGN

DATA-BASED DECISION MAKING

SCHOOL-WIDE

DATA INTEGRITY

The October Catch



By Megan Cave | October 24, 2016

The October Catch: Research's Crystal Ball

Office Discipline Referral (ODR) data is one piece in a school's decision-making puzzle. Not only does reviewing referral patterns give you and your school team a picture of what's happening school-wide, it also gives you another way to identify students in your building who could benefit from targeted supports.[1][2] Using ODR data this way in October – as a screening tool – is something we like to call The October Catch.



Start Strong with Tier 2: Tools, Tips, and Critical Features

Tuesday, October 28
10:30am Pacific Time

Data-based Decision Making and the October Catch

Wednesday, October 29
11am Pacific Time

Find lots of additional webinars at PBISApps.org

Wrap up with Intention



What is something you are walking away with from this session?

Contact info:
training@pbisapps.org

Bonus Time!



11:00-11:15 open for questions, problem solving, resource sharing, etc.