



Realplay Operational Guide

On-Field Equipment



Bird Box:
Camera w/ Protection



USB Extender Cables:
Connect Cameras to Laptop



Laptop:
Game Scoring & Monitoring



Tripod:
Hold Cameras in-place



Hard Drives:
Storage & Data Management

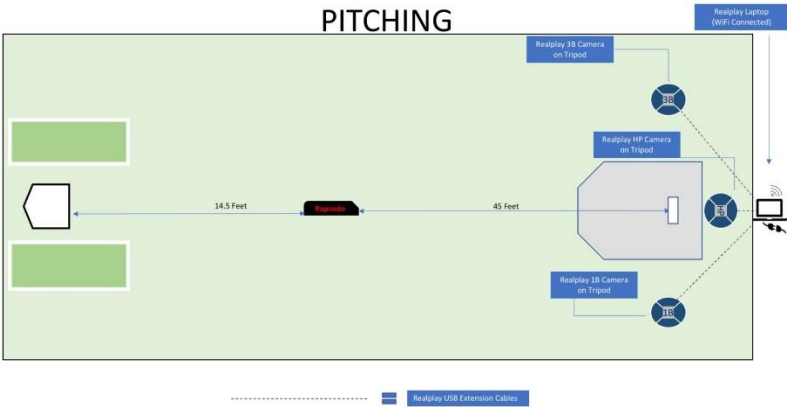
Other: Power Strip, Laptop Charger

On-Field Set-Up:

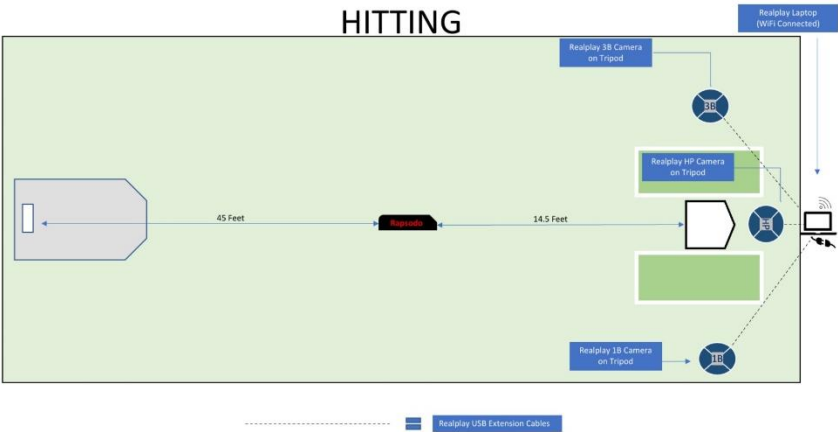


1. Start-Up Laptop, Launch Realplay App
2. Set-Up Tripods, Attach Birdboxes w/ Cameras
3. Connect USB Cables to Laptop & Cameras
4. Set-Up & Calibrate Rapsodo Unit(s)
5. Connect Laptop to Power
6. Follow In-App Set-Up Instructions (pg. 10)

Bullpen/Cage Set-Up:



For pitchers, set-up the cameras as shown above. You may also set-up the home-plate camera in a different spot if you prefer, like behind the plate.



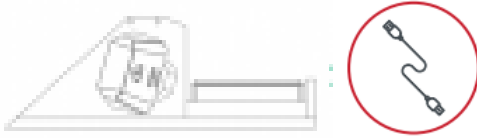
For hitters, recreate on-field set-up in cage.

Rapsodo: Hitting

SETUP:

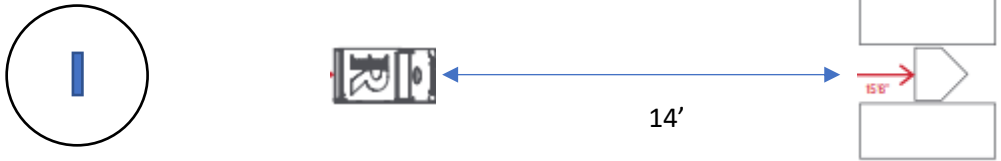
Tank:

1. Unscrew the clip from the tank mount and screw on to the bottom of the camera.
2. Connect the camera/clip back to the tank mount.
3. Place the RCE in tank cut out
4. Use the Micro USB Cable to connect the camera to the RCE
5. Connect the RCE to a fully charged battery pack (battery pack can sit inside of tank)



Measurement

1. Measure from the front of home plate (flat side) to the front of the tank (Monitor side) 14"



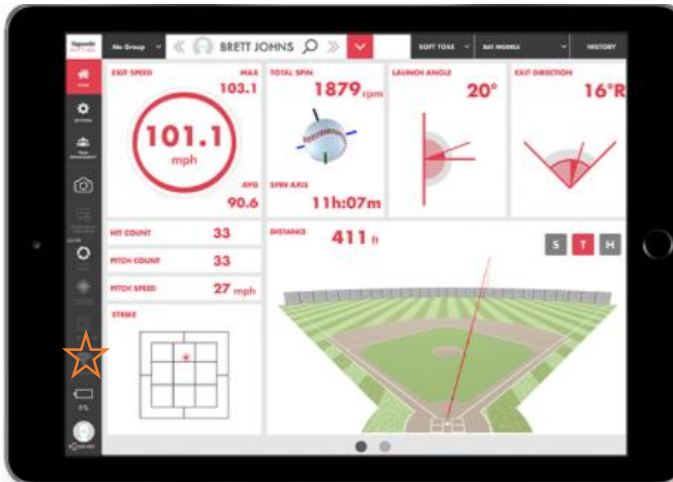
Connection

1. Login in to the Rapsodo Hitting app while connected to internet
2. Power on RCE and Monitor
 - a. RCE will take 15 seconds to power up
 - b. Monitor will turn Red once back button is pushed meaning it is ready to connect
 - i. Yellow on the monitor means it is not connected.

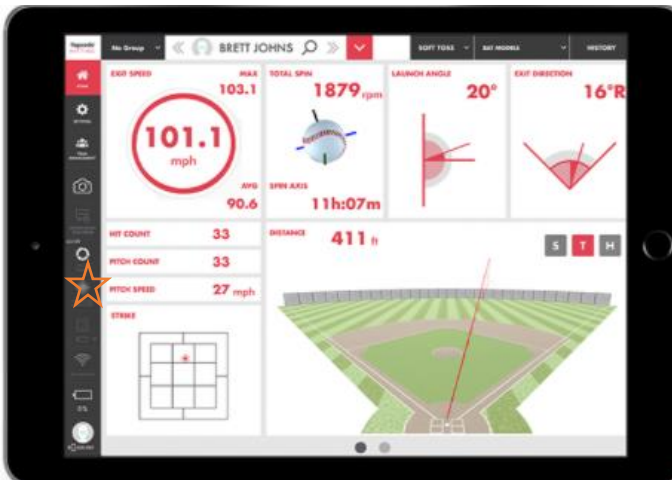


RCE and Monitor Connected

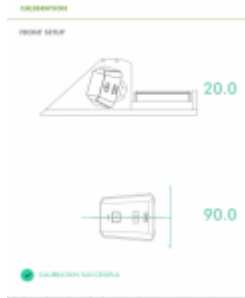
3. Go to iPad Wi-Fi settings and connect to Rapsodo option
 - a. Tip: If multiple units are on, connect to the correct Serial Number from the bottom of RCE
4. Open Rapsodo Pitching 2.0 app and press Wi-Fi Icon to connect
 - a. You should then see 3 green check marks (Calibration, Monitor and Wi-Fi)



5. Press calibration icon



- a. Make sure both angles are in the green



- b. Use the azimuth view on the right side to line the red line through the center of home plate
- If azimuth view is dark, wave hand in front of monitor.
 - You will not be able to see the plate, have someone stand on the plate to line up straight.

You are now all set up!

- Turn off diagnostic mode inside settings.
- MAKE SURE THE PLAYER CHOSEN IS NOT GUEST.
USE PROFILE for location and field number you are on

Charging during game

- Swap out RCE, Battery Pack and Monitor every 4 hours to place on charger.
 - Keep items together, they will be labeled by field number and set number
 - Example (Field 1 – RCE 1)

Important Tips

- Any data on Guest Profile will not be saved. DO NOT USE
- Remove units off field with any rain
 - Rain will ruin units
- If ball hits unit, repeat calibration steps
- Charge camera and RCE separately
- At end of day connect the iPad back to internet and press sync inside the app.
 - Leave app open until sync files say 0/0 inside app
 - Settings -> about -> bottom left should say 0/0

Rapsodo: Pitching

SETUP:

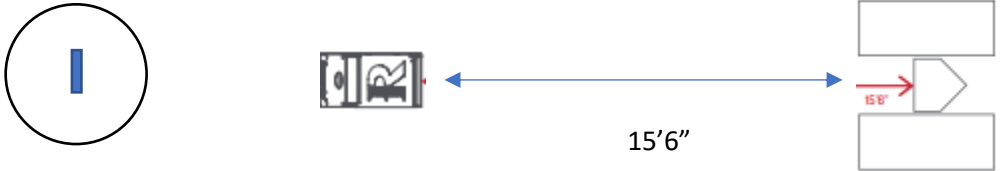
Tank:

1. Unscrew the clip from the tank mount and screw on to the bottom of the camera.
2. Connect the camera/clip back to the tank mount.
3. Place the RCE in tank cut out
4. Use the Micro USB Cable to connect the camera to the RCE
5. Connect the RCE to a fully charged battery pack (battery pack can sit inside of tank)



Measurement:

1. Measure from the front of home plate (flat side) to the back of the tank (RCE side) 15'6"



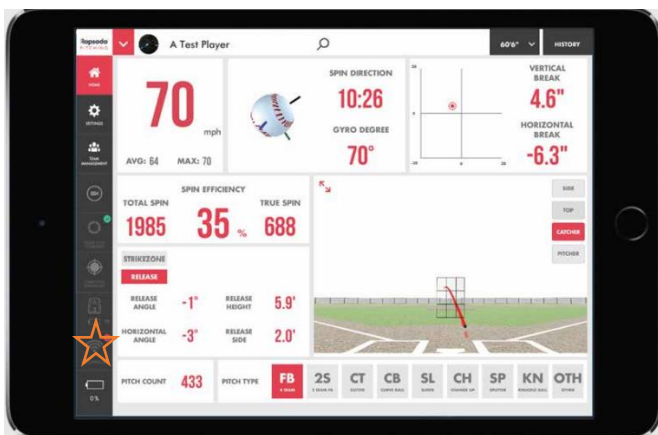
Connection:

1. Login in to the Rapsodo Pitching app while connected to internet
2. Power on RCE and Monitor

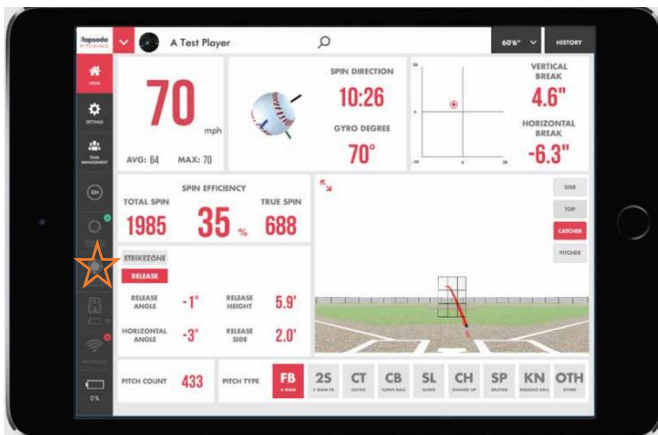
RCE and Monitor Connected

 - a. RCE will take 15 seconds to power up
 - b. Monitor will turn Red once back button is pushed meaning it is ready to connect
 - i. Yellow on the monitor means it is not connected.

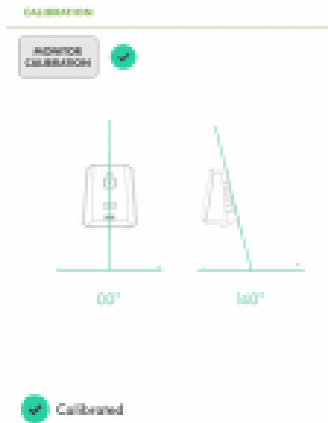
6. Go to iPad Wi-Fi settings and connect to Rapsodo option
 - a. Tip: If multiple units are on, connect to the correct Serial Number from the bottom of RCE
7. Open Rapsodo Pitching 2.0 app and press Wi-Fi Icon to connect
 - a. You should then see 3 green check marks (Calibration, Monitor and Wi-Fi)



8. Press calibration icon



- a. Make sure both angles are in the green



- b. Use the azimuth view on the right side to line the red line through the center of the rubber on the mound
- If azimuth view is dark, wave hand in front of monitor.
 - You will not be able to see rubber, have someone stand on mound to line up straight.

You are now all set up!

Turn of diagnostic mode inside settings

MAKE SURE THE PLAYER CHOSEN IS NOT GUEST.

USE PROFILE for location and field number you are on.

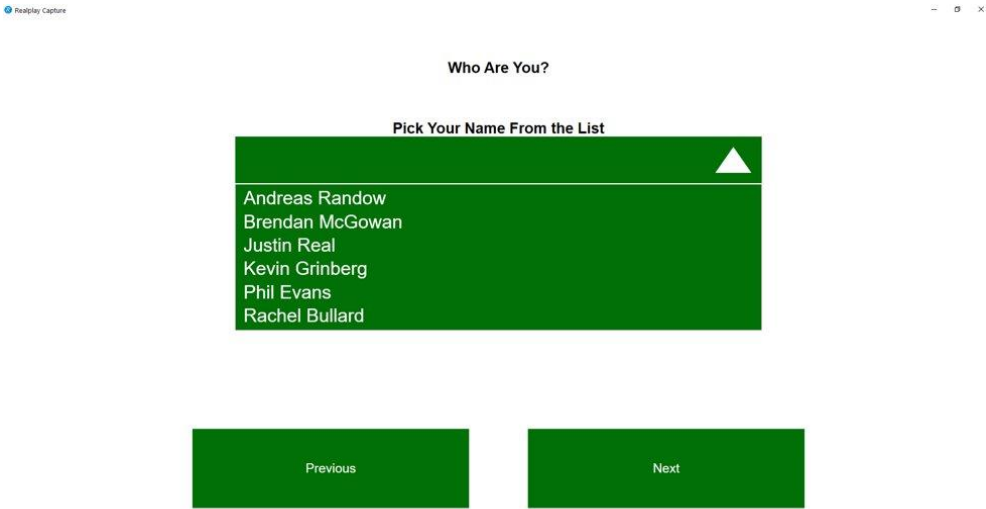
Charging during game

- Swap out RCE, Battery Pack and Monitor every 4 hours to place on charger.
 - Keep items together, they will be labeled by field number and set number
 - Example (Field 1 – RCE 1)

Realplay

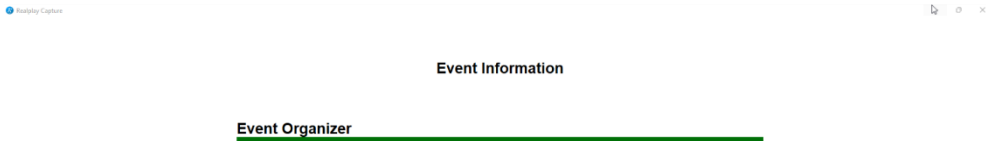
Realplay App (On-Field):

1. When launching the Realplay App, you will see the screen above. Select “On a Baseball Field”.

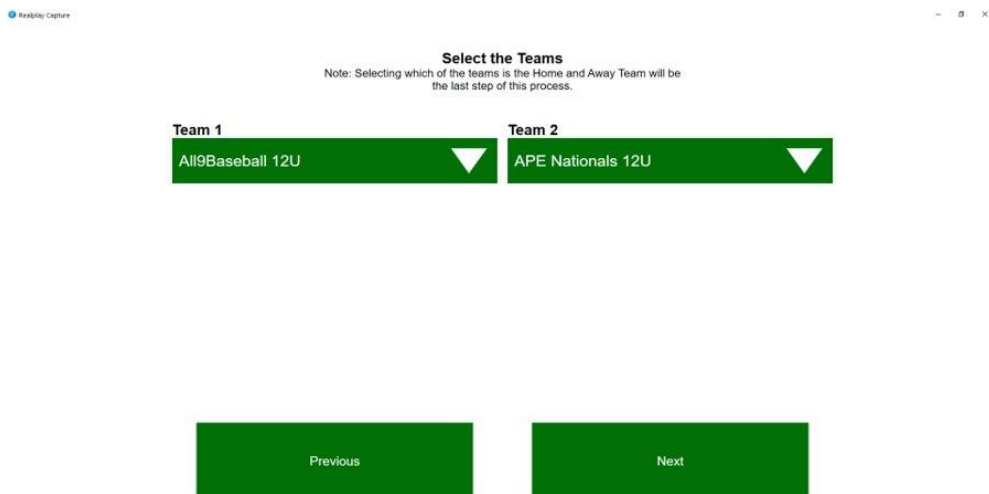


2. Select your name from the list of operators. Once making the correct selection, press “Next”.

Realplay



3. Select the Event Organizer: Mid-Pac
Select the Event Name: Showcase: Practice
Once finished, press “Next”.



Realplay Capture

Select the Teams
Note: Selecting which of the teams is the Home and Away Team will be the last step of this process.

Team 1
All9Baseball 12U ▼

Team 2
APE Nationals 12U ▼

Previous Next

4. Select correct team(s).
Once finished, press “Next”.

Realplay



Realplay Capture

What is Your Current Location?

5. Select Field Name from drop-down list provided.
Enter Rapsodo Serial #'s for hitting/pitching.
For Serial # location, refer to Rapsodo Set-Up Guide

Realplay Capture

Which of these players are playing today?
All9Baseball 12U

#00 Player Double Zero		
#0 Player Zero		
#1 Player One		
#2 Jaeger Franco		
#3 Gavin Cram		
#4 Frank Gearhart		
#5 Player Five		
#6 Player Six		
#7 Player Seven		

Previous

Next

6. Verify roster for both teams.
Add/edit any incorrect/missing players here.

Realplay

Realplay Capture

Let's Check the Hardware

3rd Base Camera

Home Plate Camera

1st Base Camera



7. Check to ensure quality camera angles & position.
Cameras should be level. Base cameras should capture
both batter & pitcher in one-frame.

Realplay Capture

Right-handed batter

Previous

Next



8. Setting Masks:

Ensure quality camera angles for each position.
** This is what the final product will look-like! **

9. Assign Defensive Positions:
Enter the jersey number of each player in their
corresponding defensive position.
Repeat this step for both teams.

Realplay Capture

— □ ×

Which of these teams is the Home Team?

Team 1

Team Blue

Team 2

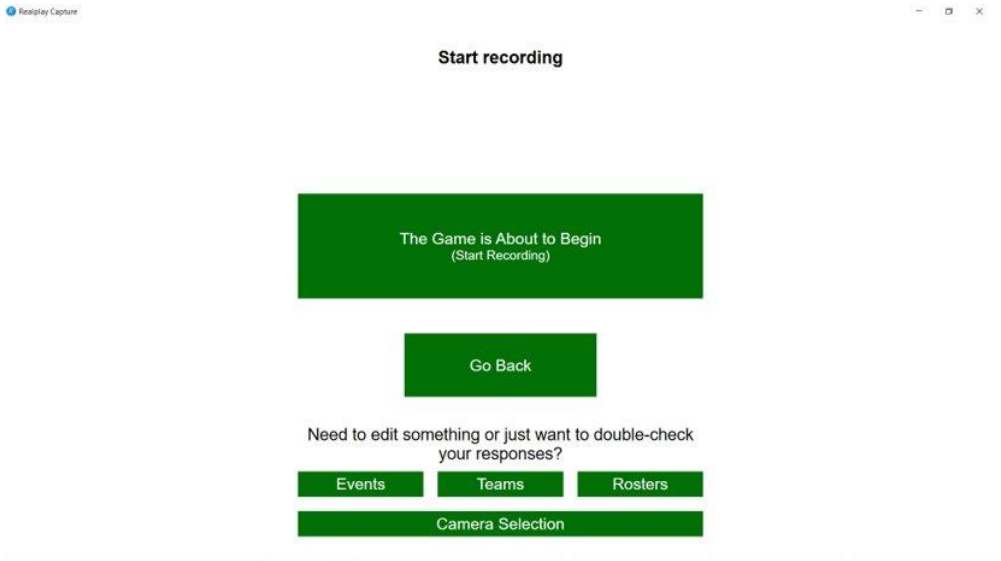
Team Yellow

Previous

Next

10. Select Home Team.
Once finished, press “Next”.

Start Recording

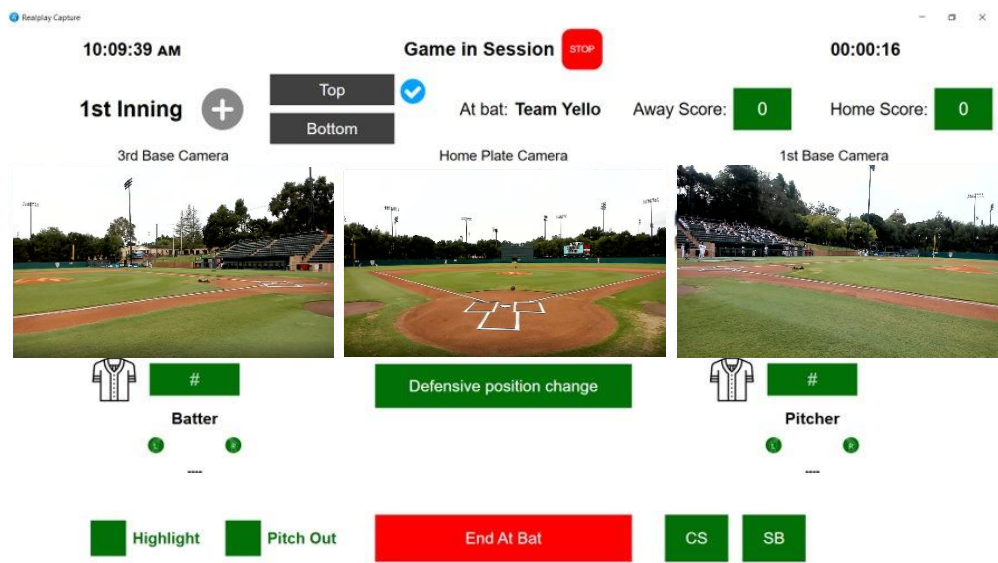


Now the game is set-up, you may begin recording.

When ready, select the large, green button titled, “The Game is About to Begin (Start Recording)”

If you need to return to any of the previous screens, use the options listed at the bottom of the page to quickly navigate to any section of the set-up process.

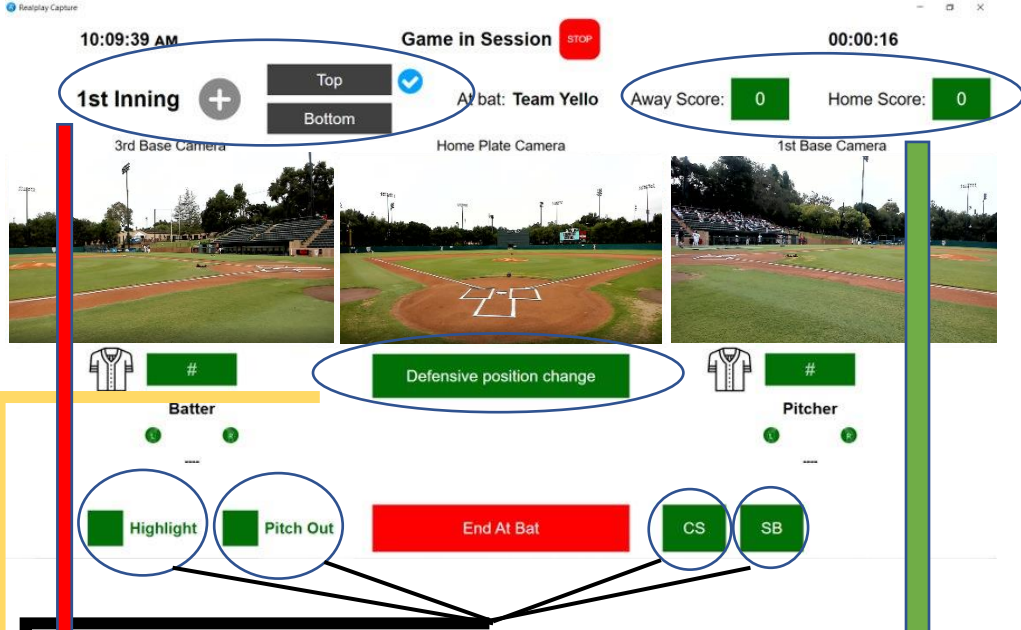
Realplay App: In-Game



Now that you have started recording,
this is the screen you will see.

1. Use the “Start/End At-Bat” to record a play.
2. Enter batter/pitcher jersey numbers & handedness.
You must have all fields filled before continuing.
3. Once the at-bat has concluded, enter play result.
4. Repeat this process for the game’s entirety.

Important Items to Note:



1. Change Inning & Half-Inning
2. Change Game Score
Score will auto-update with results entered
3. Mark highlights, pitchouts, caught-stealing and stolen bases. Click the correct option and fill-in required info.
4. Change defensive position for any player.

Showcase Mode:

For any bullpen or cage sessions, use showcase mode to eliminate the need for two teams.

Select the Teams

Note: Selecting which of the teams is the Home and Away Team will be the last step of this process.

Team 1

Arlington Cardinals 10u

Showcase Mode

Team 2

Pitching

Pitching

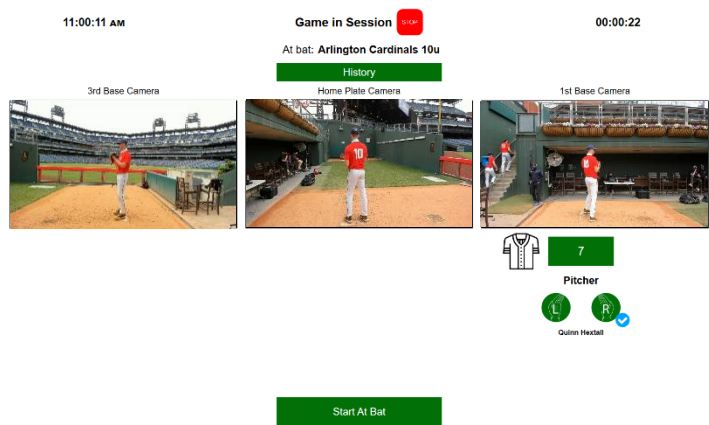
Hitting

Live-At-Bat

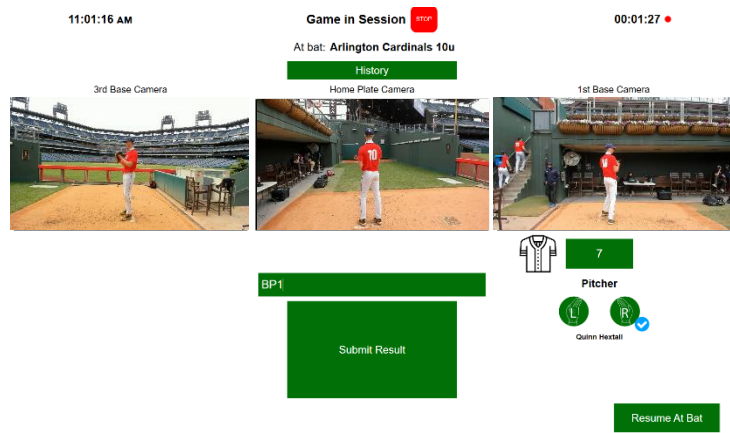
Previous

Next

Check the box next to “Showcase Mode”.
Then, choose one team and the activity they will be conducting (Pitching, Hitting or Live At-Bat).



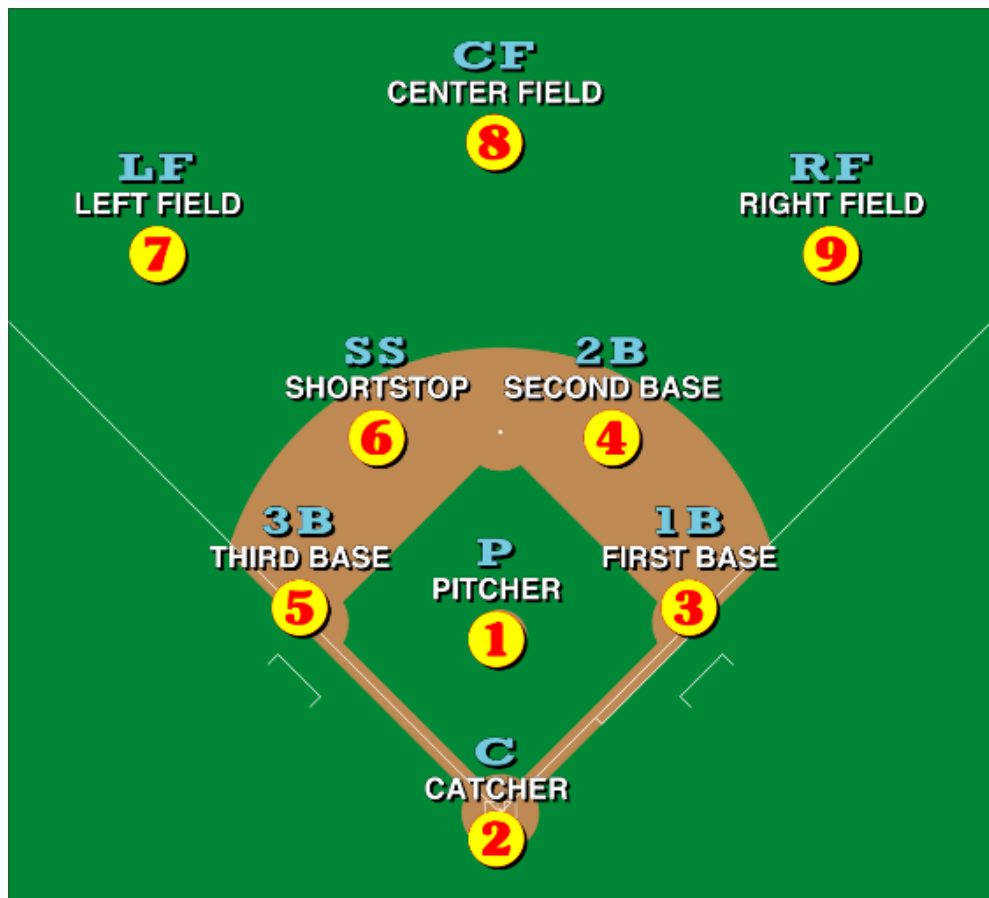
Once in-game, you will only be required to enter one jersey number for either the batter or pitcher, depending on which mode was selected.



From here, simply type in the result of each play throughout the bullpen or cage session.

For pitchers, we typically use “BP” for bullpen, and then number the sessions as they happen. (Ex: BP1, BP2, etc.)

Defensive Positions



1 = Pitcher

4 = Second Baseman

7 = Left Field

2 = Catcher

5 = Third Baseman

8 = Center Field

3 = First Baseman

6 = Shortstop

9 = Right Field

Scoring Cheat Sheet



Hits:

- 1B = Single
- 2B = Double
- 3B = Triple
- HR = Home Run
- RBI = Runs Batted-In

Reached Base:

- FC = Fielder's Choice
- BB = Walk (Base on Balls)
- HBP = Hit by Pitch
- I = Interference
- IBB = Intentional Walk

Additional Descriptors:

Mark as Highlight = Check Box

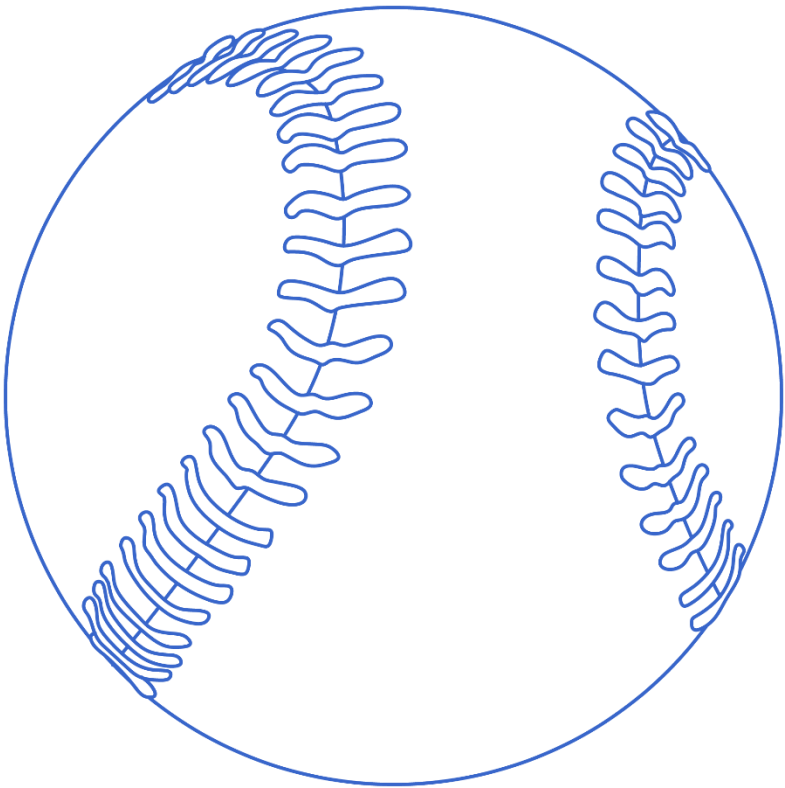
If you notice a highlight-worthy play made on-field, check the “Mark as Highlight” box before pressing “Submit At-Bat”.

Outs:

- K = Strike Out
- KK = Strike Out Looking
- F(x) = Fly-Out
- U(x) = Unassisted Put-Out
- PO = Pick Off
- CS = Caught Stealing
- E(x) = Error
- DP = Double Play (x-y-z)

- (x-y-z):
- (X)- First player to touch ball
- (Y)- Second player to touch ball
- (Z) - Third player to touch ball

**Every Player.
Every Play.**



[www.Realplay.](http://www.Realplay.com)