

THE FRASER FANFARE

APRIL 2026

UPCOMING EVENTS



- April 1-3: Spring Break
- April 15: Spinner's Book Fair Preview
- April 16: Spinner's Book Fair Shopping
- April 17: Mother/Son Dance
- April 18: Daddy/Daughter Dance
- April 23-24: No School - Spring Comprehensive Student Reviews (CSRs)
- April 30: Evening CSRs

NEWS INSIDE THE CLASSROOM

Our students have been fully immersed in the excitement of March is Reading Month! From cozy reading time to lively book discussions, it's been wonderful to see their enthusiasm for books grow each day. One of the highlights has been our unit-wide book bracket tournament, where students have been reading, comparing, and debating which books deserve to move on.

To support their choices, students worked together to create posters and persuasive arguments, sparking great conversations and even connecting to our social studies discussions about sharing opinions and supporting ideas. We are getting ready to present our final arguments before voting to decide which book will be crowned the winner. It has been so fun watching students discover new genres, authors, and favorites along the way.



WHAT WE'RE LEARNING

READING:

THIS MONTH, STUDENTS WILL BE INTERPRETING, ANALYZING, AND COMPARING THE LITERARY ELEMENTS OF FICTIONAL TEXTS - CHARACTERS, SETTING, PLOT, THEME, AND POINTS OF VIEW.

WRITING:

STUDENTS WILL BE WRITING CLAIMS BASED ON THEIR OPINIONS, BRAINSTORMING REASONS AND EVIDENCE THAT SUPPORT THEIR CLAIMS, ORGANIZING THEIR INFORMATION, AND BEGINNING TO DRAFT MULTIPLE PARAGRAPHS FOR A PERSUASIVE ESSAY.

EARLY MATH:

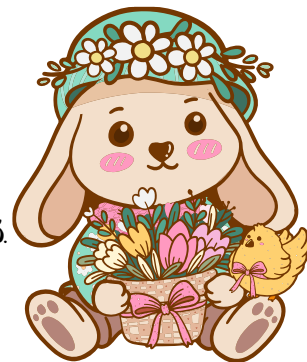
STUDENTS WILL BEGIN WORKING TO UNDERSTAND FRACTIONS AS PARTS OF A WHOLE BY IDENTIFYING THEM ON NUMBER LINES, MODELING AND WRITING EQUIVALENT FRACTIONS, AND RELATING FRACTIONS TO WHOLE NUMBERS. THEY WILL ALSO BEGIN REPRESENTING AND INTERPRETING DATA THROUGH VARIOUS CHARTS AND GRAPHS.

DEVELOPING MATH:

STUDENTS WILL CONTINUE THEIR STUDIES ON FRACTIONS BY ADDING, SUBTRACTING, AND MULTIPLYING FRACTIONS AND MIXED NUMBERS, AS WELL AS PROBLEM SOLVING WITH FRACTIONS. THEY WILL ALSO CONTINUE STUDYING MEASUREMENT AND EQUIVALENCE BY INTERPRETING DATA.

SCIENCE:

WE WILL EXPLORE HOW GROUPINGS, HABITATS, AND ECOSYSTEMS IMPACT AN ORGANISM'S CHANCES OF SURVIVAL. WE WILL ALSO BEGIN STUDYING FOSSILS AND THE CLUES THEY GIVE US REGARDING ORGANISMS AND PREHISTORIC ECOSYSTEMS.



SOCIALIZATION

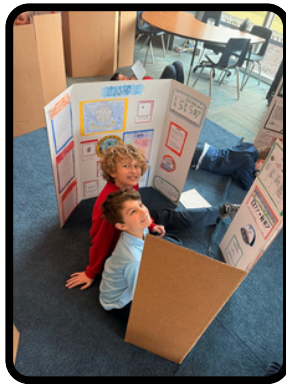
A big conversation topic at this age is how to best cultivate and maintain healthy socialization. If you're interested in some straightforward and comprehensive tips on how to approach these conversations at home, we find [THIS ARTICLE](#) does a nice job of summarizing some basic strategies! While focusing on middle schoolers, the information is universal and can just as easily be applied to our age range, 8-11, (which we know is often "forgotten" in the realm of research)!

OUTDOOR GEAR

As we move into the warmer spring weather, students should still come prepared for outdoor recess each day. We will continue going outside whenever possible, and this time of year often means mud, puddles, and wet grass. Please consider sending boots, an extra pair of socks, or extra clothes in backpacks in case students get wet or messy during recess. Having extra items at school helps keep students comfortable for the rest of the day.

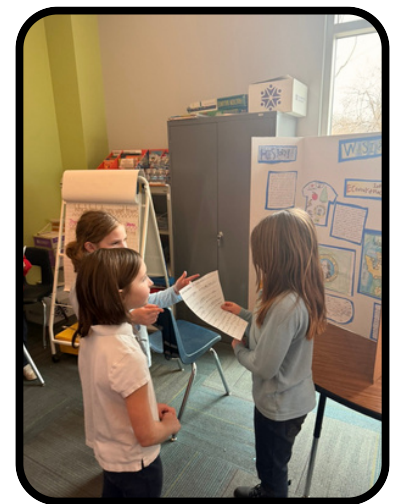
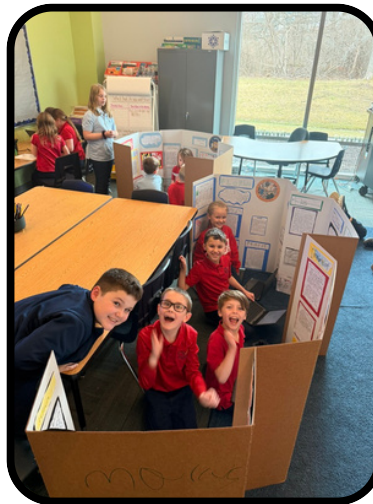
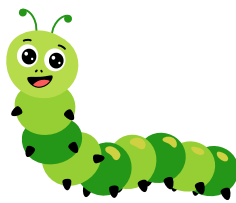
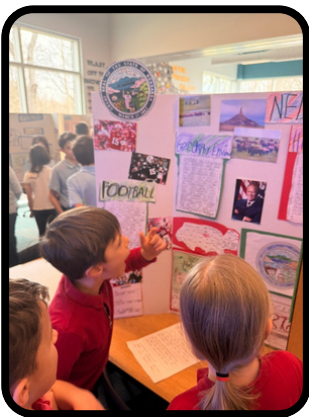
CHARACTER CORNER

Two more of the Habits of Mind (the 16 life skills and intellectual habits that we teach here at CSA) that we often focus on in our classroom include taking responsible risks and thinking flexibly. Our guided math block lends itself nicely to discussions around these two traits. Oftentimes in math, students are presented with a new problem and are asked to try solving it using their prior knowledge. In addition to this, we ask students to find alternative solutions or pathways to solutions in helping to continue their overall growth and development. Having this growth mindset going into the final term of the year will be a great way for your child to start with a fresh outlook and open mind to problem solving in other areas as well, not just in math!



PARENT PARTNERSHIP

Please be sure to continue to send students to school with peanut and tree nut free food! This includes may contain or has been processed in a facility containing these.



APRIL SHOWERS
Bring
MAY FLOWERS

Have a great April!

As always, please reach out with any questions or concerns.

ajohnson@csaschool.org + cporter@csaschool.org

GALLERY

