

# TUCUZI TIMES

## Classroom News

Our students have put in tremendous effort to create a spectacular culminating event, and they have truly exceeded expectations! One of the things we love most about our culminating events in Voyager is seeing just how much they organically help support and strengthen independence, responsibility, persistence, and work ethic. These skills are so important, and we really see them soar throughout this project! We could not be more proud of them. Our students are eager to share all of their hard work with you. We appreciate your support and partnership in this journey, for it has truly taken a village!

## Important Dates

**April 1-3:** Spring Break

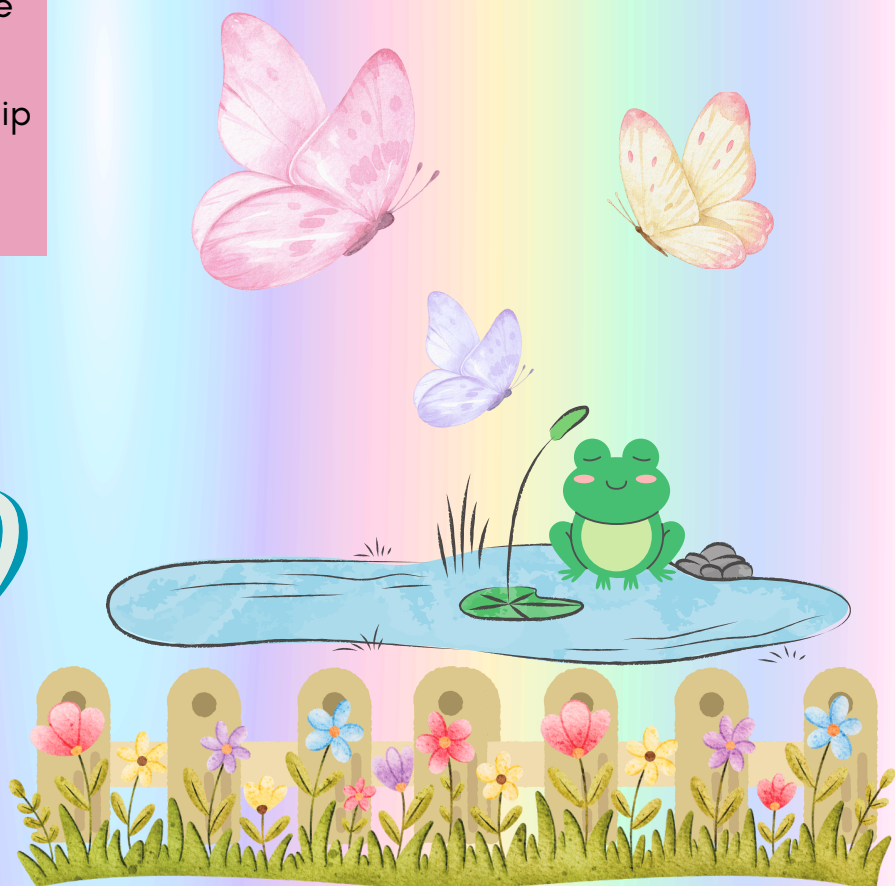
**April 13-17:** Book Fair

**April 17:** Mother/Son Dance

**April 18:** Daddy/Daughter Dance

**April 23-24:** No School - Spring Comprehensive Student Reviews (CSRs)

**April 30:** Evening CSRs



# Soaring into Learning

## **Reading:**

This month, students will be interpreting, analyzing, and comparing the literary elements of fictional texts – characters, setting, plot, theme, and points of view.

## **Writing:**

Students will be writing claims based on their opinions, brainstorming reasons and evidence that support their claims, organizing their information, and beginning to draft multiple paragraphs for a persuasive essay.

## **Early Math:**

*Students will begin working to understand fractions as parts of a whole by identifying them on number lines, modeling and writing equivalent fractions, and relating fractions to whole numbers. They will also begin representing and interpreting data through various charts and graphs.*

## **Developing Math:**

Students will continue their studies on fractions by adding, subtracting, and multiplying fractions and mixed numbers, as well as problem solving with fractions. They will also continue studying measurement and equivalence by interpreting data.

## **Science:**

We will explore how groupings, habitats, and ecosystems impact an organism's chances of survival. We will also begin studying fossils and the clues they give us regarding organisms and prehistoric ecosystems.

# Comprehensive

# Student Reviews

We look forward to meeting with you to discuss your child's progress and growth as a whole child: academically, socially, morally, and physically! This year, our school-wide dates for term three CSRs fall on Thursday, April 23rd and Friday April 24th. We will also be having evening conferences on Thursday, May 1st, as well as some before and after-school slots available during this time frame. A sign-up genius link will be emailed to you soon. We will also be sending home a pre-conference form for you to fill out and send back to prior to our meeting.



**Group Work Opportunities**



**Classroom Joy!**



**Outside Learning!**



**Reading with Navigator Students**

# Character Corner

Two more of the Habits of Mind (the 16 life skills and intellectual habits that we teach here at CSA) that we often focus on in the our classroom include taking responsible risks and thinking flexibly. Our guided math block lends itself nicely to discussions around these two traits. Often times in math, students are presented with a new problem and are asked to try solving it using their prior knowledge. In addition to this, we ask students to find alternative solutions or pathways to solutions in helping to continue their overall growth and development. Having this growth mindset going into the final term of the year will be a great way for your child to start with a fresh outlook and open mind to problem solving in other areas as well, not just in math!



## Contact Info

**Alexis Sanchez:**

asanchez@csaschool.org

**Katrina Dunham:**

kdunham@csaschool.org

# Developmental

## Approach

Social/emotional, physical/sensory, moral character, and academic/intellectual development: while complex and functioning in different regions of the brain, they all dynamically interconnect. To prepare students for success in college, career, and life, each of these domains must be honored and prioritized. Intelligence is not linear or hierarchical - it is dynamic and complex, and it encompasses each developmental area. CSA's intentional focus on The Habits of Mind further supports the success of the Whole Child Model, for it recognizes the importance of holistically embracing intelligence.

# NWEA & MSTEP

## TESTING

As we look ahead to spring, we want to share that both NWEA and M-STEP testing will be approaching. Students will take the NWEA assessments in reading and math, as well as the M-STEP, which measures skills in ELA (including reading, writing, and language) and math. While we do not yet have confirmed testing dates, we have begun talking with students especially about M-STEP—to help answer their questions, explain what to expect, and ease any worries. Our goal is to ensure students feel prepared and confident. We will share more detailed information with families as we get closer to the testing window and receive our specific schedule!