



Ehara taku toa i te toa takitahi, engari he toa takitini

My strength is not as an individual, but as a collective

Over the past 30+ years, Motutapu Restoration Trust volunteers have planted over 500,000 trees to create 100 hectares of native forest habitat for wildlife. That has been achieved almost exclusively by a bunch of **passionate conservation volunteers**, which feels like a great achievement!

This week is Volunteer Week, and we'd like to acknowledge the thousands of volunteers who have contributed their time to this project, creating a legacy to be enjoyed now and by future generations.

Our volunteers are diverse – retirees and families with children, experienced outdoor people and new New Zealanders. **What unites us is our passion for conservation.** We are delighted to be able to give people the opportunity to get involved in hands-on conservation work, and to connect with the special place that is Motutapu.

A huge thank you to all our volunteers past and present.

Nathalie Morris
Chair



WHIRIA TE TANGATA
weaving the people together
#NVW2025 | 15–21 JUNE 2025



2025 Planting Season Underway

Planting happens in winter when the higher rainfall and cooler temperatures provide the best chance of survival and growth for native species. This year the Trust will be focusing our efforts on planting around "Central Pond", an imaginatively named pond at the centre of the motu.

Planting in this area is ecologically important – enlarging the habitat for the water-birds, including pāteke, who make the pond and the island their home. This planting will also help improve water quality in this waterway that flows out to the Hauraki Gulf.

Motutapu is rich in archaeological sites, both Māori and European. As we do for any new planting area, an archaeological survey has been carried out to assess the proposed area for any impact on archaeological values.

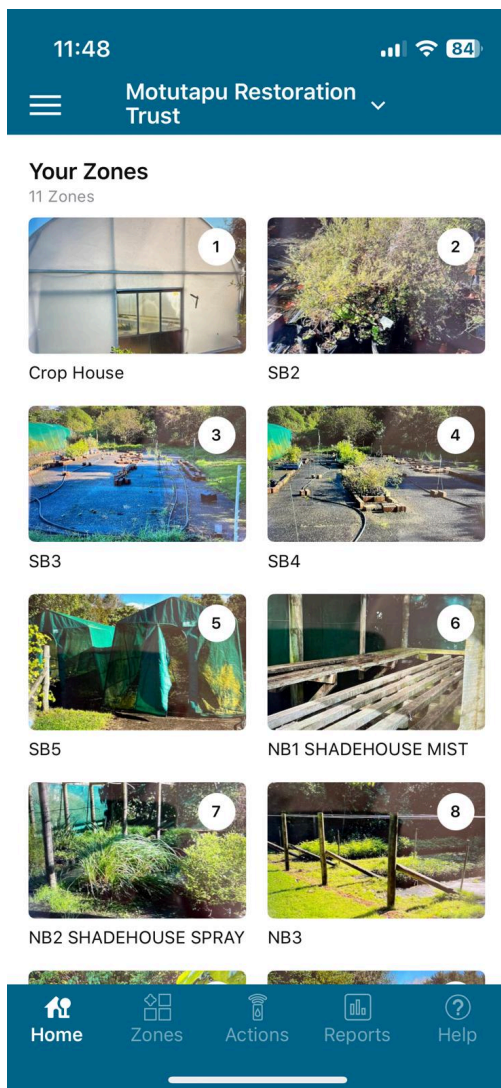
We would like to thank **Trees that Count** who, over the past two years, have not only provided funding to assist with our planting programme but also visited the island to provide technical advice. Trees that Count do a fantastic job of connecting donors with conservation groups like us.

Nursery Irrigation Upgrade

The Trust runs an on-island nursery to grow native trees for our planting programme. This simplifies the logistics and bio-security issues involved in bringing seedlings from elsewhere. Optimising the watering of seedlings ensures the plants grow strong and healthy, and get a good start once they are planted out.

We have just completed Phase 1 of an upgrade to the nursery irrigation system, installing a new controller and valves to replace hardware that was old and frequently failed. Internet connectivity to the controller means we can monitor and control the system remotely – even from the mainland!

Thanks to the **ANZ Staff Foundation** for their contribution towards the cost of this irrigation upgrade.



Welcome to our New Volunteers

We have had lots of wonderful new volunteers sign up in the last two months, in response to ads on Volunteering Auckland and Seek Volunteer. It has been wonderful to see so many of you out on the motu already, both during the week and on our Sunday volunteer days.

A special welcome to **Nicole Zhang**, our new Volunteer Coordinator who joined in March. Many of you will have been in touch with Nicole who welcomes new volunteers and organises Sunday work days.

If you have signed up recently, keep an eye out for our emails about upcoming Sundays, or email admin@motutapu.org.nz if you can join us during the week.

Look out for our volunteer experience survey too – we would love your feedback on how we are doing.



Kānuka and Mānuka

Over the decades, the Motutapu Restoration Trust has raised and planted both kānuka and mānuka in large numbers on Motutapu.

They are both important pioneers in the battle to reestablish native forest on cleared land and vulnerable, erosion-prone areas. But do you know which is which?

[Read More About Kānuka and Mānuka on Motutapu](#)

Transport Logistics

Our five vehicles on the island are vital to get our volunteers and gear from the ferry at Rangitoto wharf to the different work sites on Motutapu.

We've recently undertaken some preventative maintenance, coating the underbody of our Landcruiser troopy to prevent corrosion. This kind of preventative maintenance, as well as the regular servicing and WOF checks which need to take place off-island for all our vehicles, is a real logistical challenge given there is no regular vehicular ferry service. We also need to coordinate cleaning of the vehicles and inspection for biosecurity reasons.

The **Motutapu Outdoor Education Trust (MOET)** team makes a significant contribution by facilitating passage for our vehicles on the barges that bring school groups out to their camps. Thank you to MOET and the schools who allow us to share your transport – this helps reduce our costs and focus on our core work of forest restoration.

Heal the Hauraki

Heal The Hauraki is a just released docu-series highlighting the impact of aroha in action and celebrating the people leading the way in healing the Hauraki Gulf through their inspiring mahi.

Episode 1: Whenua includes footage of some of the restoration effort on Motutapu. Episodes are available on YouTube and are inspiring to watch.

Heal The Hauraki - Episode 1



Volunteer or Give a Donation

We are always looking for volunteers to help on or off the island in a range of roles. Interested? Have a [look at our volunteer ads](#) on Seek Volunteer.

If you are not able to help directly, support us by giving a one off or regular donation towards work on the island. Every \$10 helps plant a tree. Go to our website to [make a donation](#).

Sponsors, Funders & Supporters



© 2025 Motutapu Restoration Trust

[Website](#) | [News & Updates](#) | [Contact](#) | [Unsubscribe](#)

