

TNC Year Book

April 2022 – March 2023

ENGAGE



ENRICH



EMPOWER

CONTENTS

I	About The Nesbitt Centre Ltd	3
II	Message from Chairman	4
III	Report from Executive Director	5
IV	List of Board of Directors	6
V	Our Objectives and Achievements	
	The Learning Centre	7
	The Social Enterprises	14
VI	A Farewell Chapter	17
	Founder and Chairman: Mr. David Nesbitt transitions to Emeritus Chairman	
VII	Demographic	18
VIII	Organisation Chart	19
IX	Statistics and Financial Summary	20
X	Acknowledgment Of Donors	21
XI	Join Us In Making A Difference	22
XII	Donation Form	

ABOUT THE NESBITT CENTRE LIMITED

The Nesbitt Centre Limited (TNC) is a leading charitable social services organisation in Hong Kong that provides Life Development needs of English speaking young adults with learning disabilities through educational, training, and vocational programmes. It was founded in 1993 and is headquartered in Sai Ying Pun. The Nesbitt Centre operates two learning facilities in Sai Ying Pun and Chai Wan. There are four social enterprises in the F&B sector. Our primary mission is to be an excellent provider of services for people with disabilities through 3 pillars - engage, enrich and empower people with learning difficulties and assist them to lead more meaningful lives in the broader community.

In 2013 with the opening of two social enterprises, The Nest and Café 8 (now known as Museum Café 8). The Nesbitt Centre started to provide meaningful vocational training and employment opportunities for our learners and those from our partner charities. The Nest at St Andrew's Church, Tsim Sha Tsui opened in November 2018 and our 4th social enterprise, a bakery in Sai Ying Pun, opened in March 2020. In 2020 due to Covid-19 pandemic, E-learning / Blended Learning Program was developed and implemented to enable students to continue their learning.

In March 2021 Craftable (@craftable.hk) was setup. This initiative is to nurture the learners' talents and creativity through crafts to enable another alternative work experience and opportunity. In December 2022, the Craftable Catalog is completed to promote the students' crafts. We continue to look for new opportunities for the empowerment of our learners within the community and will update you with these happenings in future annual reports.

VISION: A society where people with disabilities have the same opportunities to develop and use their talents and skills as all other people

MISSION: To be an excellent provider of services for people with disabilities

To drive its long-term goal as an excellent provider of services for people with disabilities, The Nesbitt Centre has set its focus on pursuing these four strategic directions to:

- develop and support our excellent staff so that they can continue to deliver top quality programmes
- focus on our unique value proposition of skills-to-training-to-jobs by creating opportunities to develop capabilities and allow our students to realise their full potential in society
- increase our community impact through expanded partnerships with other NGOs, business, academia and government
- broaden awareness of TNC and of the role of people with special needs, through active communications and engagement with government, NGOs, media, parents and customers of our social enterprises

FIND US AT



LG/F Sai Ying Pun Community Complex, 2 High Street, Sai Ying Pun, Hong Kong



+852 2813 4550



+852 2813 4536



www.nesbittcentre.org.hk



info@nesbittcentre.org.hk



www.facebook.com/thenesbittcentre





MESSAGE FROM CHAIRMAN

Andrew Sheard

I begin my first annual report as Chair of the Board by paying tribute to my predecessor, David Nesbitt. After founding the organisation in 1993 with his wife Wendy, David went on to lead it as Chair of the Board for 29 years. This is a remarkable accomplishment in its own right. During that time David steered the Centre through its early years and initial challenges, setting up what we now call the Learning Centre at Sai Ying Pun, and then establishing the 4 social enterprises that we operate today. The result is a remarkable achievement, a range of programmes and employment pathways for people with disabilities, and without which Hong Kong as a whole would be less diverse and a less enriched society.

I experienced David's leadership for several years whilst serving as a Board member prior to taking up the Chairman role in July 2022. I always found him to be a wise, patient, and diplomatic leader who always put the needs of our disabled people and their families at the heart of everything we do, and I intend to continue with that perspective going forward. David remains on the Board as a Director, and I welcome the continuity which that brings.

As we leave 2022-23 behind us, The Nesbitt Centre is putting the challenges of operating in the Covid environment behind us. You can see in the financial report that over the last 3 years social enterprise income, fee income, and donations have all been down significantly. We are immensely grateful to the Hong Kong government for its support in various forms during the Covid period which has allowed us to maintain the programme and the employment of people with disabilities at our social enterprises. The challenge now is to refresh and make all aspects of our organisation self-sustaining again. The Centre at Sai Ying Pun is in need of a renovation to bring the facility up to the standard we aspire to, and we have made an application for funding to The Jockey Club. As a Board we are optimistic about the future and there will be opportunities to further expand the employment opportunities offered.

2023 also marks the 30th anniversary of the founding of The Nesbitt Centre and I hope as many of you as possible will be able to join us for one or more of the events being planned to celebrate that notable milestone.

Andrew Sheard

Chair of the Board of Directors
The Nesbitt Centre Ltd.



REPORT FROM EXECUTIVE DIRECTOR

Surinder Punjya

It is my great honour and privilege to write this to thank all the staff, volunteers and supporters of the Nesbitt Centre in the past years to make this Centre and the Social Enterprises, a place where the young adults with disability could be engaged, enriched and empowered.

Despite the ongoing challenges of the COVID-19 pandemic, The Nesbitt Centre continued to offer high-quality learning and support to learners with disabilities, and provided employment opportunities through its social enterprises.

We continued to offer e-learning and blended learning programmes to ensure that all learners had access to high-quality education. As pandemic restrictions were lifted in 2023, we are pleased to see the return of physical learning. We remain committed to providing a safe and inclusive environment for all learners.

Craftable (@craftable.hk) is an initiative that nurtures the talents and creativity of learners with disabilities by providing them with alternative work experiences. Craftable products, such as candles, coasters, and trays, are designed and sold by our medium and higher support-needs groups at bazaars and at the outlets of our social enterprises.

We are also honoured to announce that the Nesbitt Centre was named a finalist for the Spark Raise Awards 2022 in the Community Spirit Fundraiser of the Year category. This is a testament to the dedication and hard work of our staff, learners, families, and donors.

In addition to our core programmes and services, we also organised a diverse range of events and workshops to enhance the knowledge and skills of our learners and employees at our social enterprises. These events and workshops empowered our learners and employees to achieve their goals and reach their full potential.

Moving forward, we are committed to our mission and vision by expanding our e-learning platform and Preparation for Life programme to reach more learners. We are also committed to growing our social enterprises by securing funding for two new locations in Tsing Yi and Union Church, which will provide more job opportunities for learners with disabilities. Finally, we are committed to strengthening our community engagement efforts to promote awareness and understanding of disability inclusion.

We are grateful for the support of our staff, learners, families, and donors. We look forward to working together to create a more inclusive and accessible future for people with disabilities.

We bid farewell to David Nesbitt, our founder and Chairman for 30 years, who stepped down in July 2022 to become Chairman Emeritus as he moved out of Hong Kong. Under his leadership and vision, Nesbitt Centre has thrived. We are delighted to announce Andrew Sheard as our incoming Chairman. His leadership abilities and collaborative approach will be crucial in steering Nesbitt Centre towards its goals. We are excited to see him leverage his experience to further empower and support people with learning disabilities.

Thank you for your partnership and commitment to The Nesbitt Centre.

With best wishes

Dr Surinder Punjya
Executive Director

Our Board of Directors



David Nesbitt
Founder and Chairman Emeritus



Andrew Sheard
Chairman of the Board of Directors



Simon Booker



Connie Chue



Lydia Lee



Christopher Liu



Anna Sampson

ABOUT The Learning Centre

The Nesbitt Centre Limited (TNC) provides a "Preparation for Life programmes" that helps adults with disabilities achieve independence and develop their own potential. The centre has five student groups: Maroon 5, Journey, Greenday, ABBA, and Avengers.

The centre's hours are:

Monday - Thursday: 9:00am - 5:00pm

Friday: 9:00am - 4:00pm

The main activity centre is located in Sai Ying Pun.

Pamela Youde (PY) Centre, Chai Wan is another location where we use as Residential Training Centre.

The centre offers a variety of programmes and services, including:

Preparation for Life Programme: This programme helps learners develop the skills and confidence they need to live independently. Learners participate in activities such as cooking, cleaning, budgeting, and job searching.

Vocational Training Programme: This programme provides learners with the opportunity to gain work experience in a variety of settings. Learners work alongside staff with learning disabilities, and they receive support and training as needed.

Social and Recreational Activities: The centre offers a variety of social and recreational activities for learners, such as sports, arts and crafts, and music. These activities help learners to develop their social skills and to have fun.

The Nesbitt Centre Learning Centre engages, enriches, and empowers people with learning disabilities in Hong Kong in a number of ways. The centre provides learners with the opportunity to:

Develop their skills and confidence: The centre's programmes and services help learners to develop the skills and confidence they need to live independently and to be successful in the workplace.

Become part of a community: The centre creates a sense of community for learners, where they can feel welcome and accepted. Learners can socialise with other people with learning disabilities, and they can learn from and support each other.

Make a difference in the community: The centre's social enterprises provide employment opportunities for learners, and they also raise awareness of learning disabilities in the community. This helps to break down stereotypes and discrimination, and it creates a more inclusive society for everyone.

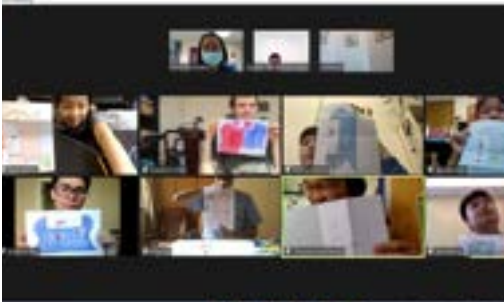
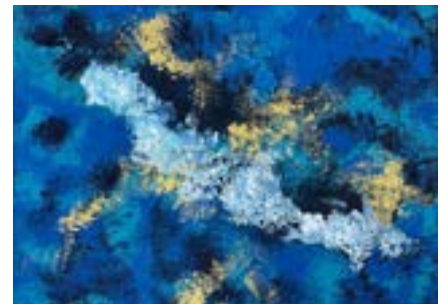
The Nesbitt Centre Learning Centre has a positive impact on learners and the society during the pandemic period. The centre has adapted its programmes and services to meet the needs of learners during the pandemic. For example, the centre has implemented e-learning and blended learning programmes, and it has created online social and recreational activities for learners. The centre has also continued to provide support and training to learners, and it has helped learners to find employment during the pandemic.

The Nesbitt Centre Learning Centre is a valuable asset to Hong Kong. The centre provides education, training, and employment opportunities for adults with learning disabilities, and it helps to make Hong Kong a more inclusive society for everyone.

Our Objectives and Achievements

Engaging our Learners

At The Learning Centre



Our learners actively engaged in their communities through vibrant online and in-person activities. They showcased their talents alongside established artists with disabilities at "Art Wonderland," a collaborative exhibit with ADAM Arts Creation, Special Achievers, and Project Inclusion. Locally, volunteers from Localhood and United Smile Youth Foundation enriched our e-learning program with captivating storytelling and engaging arts & crafts sessions. These partnerships were instrumental in creating these enriching experiences for our learners.

ADAM Arts Foundation taught our learners acrylic painting online as part of their Inclusion Arts project. The learners painted beautiful pictures on canvas bags. We are grateful for this wonderful online session.

We also had our first face-to-face community engagement with the students of ISF School. In the Crafting Friendships learning event, our learners taught the students how to decorate candles. The students then engaged our learners in bracelet making, card games, and digital drawing.



We have engaged with volunteers from schools, corporate, and other organizations.

Volunteers from Renaissance College, Canadian International School, KidsAbility, and AWA supported our learners in different sessions at TNC. Students from Hong Kong International School hosted a baking event as well as a pop up sale of our learners crafts for fundraising.

Goldman Sachs hosted art jamming sessions with all of our learners as well. Barclays volunteers helped our learners make Christmas ornaments.

Our Objectives and Achievements

Engaging our Learners

At The Learning Centre



Outings were organised for our learners, where they had the opportunity to enjoy the The Big Eight – Dinosaur Revelation exhibit and an arts workshop. They were amazed by the dinosaur fossil skeletons and had a great time creating their own works of art. We are grateful to Arts with the Disabled Association Hong Kong for making these outings possible.

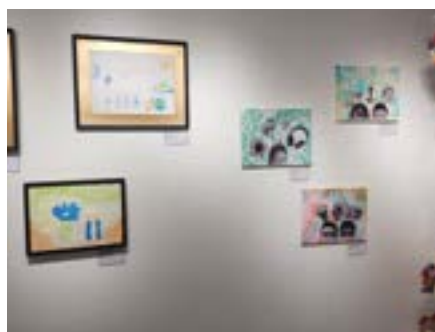


We are grateful for the increased number of volunteers who have joined us for events and sessions.

Students of Canadian International School gave our learners ongoing support.

Our new corporate partner, Zurich Watch, sponsored our first art jamming workshop with our learners at Museum Café8 in March.

This was the beginning of many more exciting collaborations to come.



TNC collaborated with Jockey Club Sarah Roe School to organize the Be My Best art exhibition, where learners displayed their artwork on the topic of well-being.

TNC also collaborated with Domestic Worker's Corner HK. The Programme Manager provided training for domestic workers on how to assist people with disabilities.

The Programme Coordinator and Committee Engagement held a workshop on employing people with disabilities with our partners at JLL.

Our Objectives and Achievements

Enriching every day

At The Learning Centre



Our virtual Easter celebration fostered joy and connection among learners. They engaged in interactive activities like making crafts and playing games, developing important skills like fine motor control, teamwork, and communication. The creation of personalized Easter eggs and bunnies encouraged self-expression and celebrated cultural traditions.



From virtual to vibrant: We celebrated a significant step forward in May as learners joyfully returned to TNC for in-person sessions. This enabled the exciting resumption of PY sessions and welcomed back our external partners, who brought their expertise in yoga, drumming, dancing, art, and drama to life. We are incredibly grateful to our dedicated instructors, volunteers, and TNC staff who expertly navigated the transition from online to in-person learning, fostering a vibrant and engaging environment.



Daily sessions at the centre and PY Residential have been positive especially with addition of 2 new programme staff and a new speech and language therapist. We also welcomed new learners in our midst.

We also enjoyed learning about different reptiles with Cajun from Ki2zoo. Our learners met a bearded dragon and a python!



We were delighted to have learners and their families join the Christmas party at Museum Café8. The Christmas party was a wonderful opportunity for learners and their families to connect with each other and celebrate the holidays.

Our Objectives and Achievements

Empower our future

At The Learning Centre



Our learners had more opportunities for work training and experiences. When sessions were resumed in-person at the Sai Ying Pun center and PY Centre, the learners were able to participate in Craftable again. They made some of our favourite crafts, such as coasters, candles, and trays.

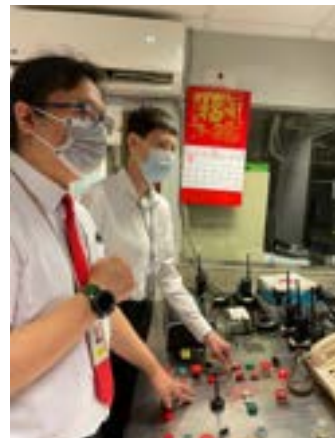


Some learners started learning how to make different kinds of keychains with the guidance of our interns. They were able to make keychains with their own hand-drawn designs on shrinking plastic. They also made keychains from polymer clay.



A learner started working at The Nest at St. John's and he learned how to take orders and used the Point of Sales (POS) system. He was also trained in taking contactless payment. It was a new learning curve and opportunity for him.

Another learner resumed his work at Compass at the HSBC main office. He ensured cleanliness by clearing tables and wiping the tables.



Another learner began his placement at JLL as a Facilities Officer. His responsibility was to control panel operation at the facilities office.



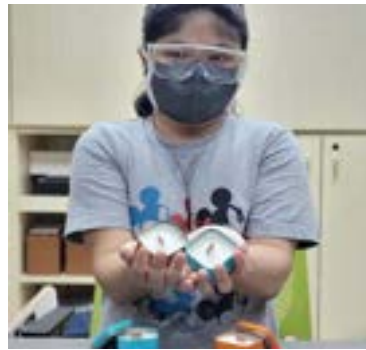
Avengers learners and Museum Café8 staff marked a pivotal moment with a certificate ceremony celebrating their completion of various online courses. This joyful event wasn't just about the achievements, but also fostered connections as learners met their mentors from Barclays for the first time.

A resounding congratulations to all participants! Their dedication and perseverance in tackling these online courses are truly inspiring.

Our Objectives and Achievements

Empower our future

At The Learning Centre - Craftable



Sales of handmade crafts by the learners were sold at Discovery Bay Christmas Market.



ABOUT The Social Enterprises

Social Enterprises Location:

The Nest at St John's Cathedral- Garden Rd, Central.

Museum Café at The Hong Kong Maritime Museum Pier 8 Central.

The Nest at St Andrew's 138, Nathan Road, Jordan.

The Nest Bakery at Sunview Industrial Building , 3, On Yip St, Chai Wan.

The Nesbitt Centre Limited runs four social enterprises that engage, enrich, and empower people with learning difficulties. These enterprises provide opportunities for people with learning difficulties to work in a community setting, learn new skills, and develop their confidence. They also engage the local community in the social enterprise model, creating a sense of inclusivity and integration.

The Nest at St John's Cathedral, Museum Café, The Nest at St Andrew's and The Nest Bakery, are all examples of how these social enterprises work. They employ people with learning difficulties and provide them with the opportunity to learn new skills and develop their confidence. The cafes also sell their products to the local community, providing fresh and delicious food and drinks while also generating income for the social enterprises.

In addition to providing employment opportunities, these social enterprises also enrich the lives of people with learning difficulties in a number of ways. They provide training and skills development, which can lead to better job prospects. They also offer opportunities to interact with the community, which can help people with learning difficulties feel more included and valued. Finally, they provide a sense of purpose and self-worth, which can boost confidence and motivation.

The social enterprises set up by The Nesbitt Centre Limited are a valuable asset to the community. They provide employment opportunities, training, and skills development for people with learning difficulties. They also help to create a more inclusive and integrated society. They are providing them with the opportunities they need to succeed and live fulfilling lives.

Our Objectives and Achievements

At The Social Enterprises

Engaging, Enriching and Empowering through employment

Museum Café8 is a unique rooftop café located in Central Pier 8, Hong Kong, with a mission close to our hearts: providing training and job opportunities for individuals with disabilities.

Explore charming Museum Café8: view their space, logo, and map, plus inspiring photos of successful private events.

Working at Museum Café8 empowers staff with valuable skills and real-world experience. They learn to serve customers, communicate effectively, and gain confidence. This integration into the community enriches their lives and helps them reach their full potential.



Museum Café8 fuels its mission by hosting diverse community events! Every gathering empowers our social enterprise and enriches lives.



The Nesbitt Centre was named a finalist for the Spark Raise Awards 2022 in the Community Spirit Fundraiser of the Year category. We are grateful to everyone who made this possible with their hard work and dedication.

Our Objectives and Achievements

At The Social Enterprises

Engaging, Enriching and Empowering through employment

Food preparation by our staff at The Nest at St John's Cathedral and St Andrew's Cathedral



Engaging: Providing our staff with opportunities to learn and grow in their food preparation skills, and to use their skills to contribute in production for sales.

Enriching: Helping our staff to develop new skills and knowledge, both in food preparation and in other areas related to their work.

Empowering: Giving our staff the confidence and authority to make decisions and take ownership of their work.



2022/2023 Round Up

Our learners continued to engage with us throughout the 2022/2023 academic year, whether through online learning or in-person sessions at our Learning Centre (DAC). Our programme provides them with enriching activities that promote their overall well-being. From expressive arts to accessible yoga and immersive storytelling, all of our learners are empowered to take on the world with a happy and healthy outlook on life.

We are proud of the progress that our learners have made in the past year. We are confident that they will continue to engage, enrich, and empower themselves in the years to come.



A Farewell Chapter

Founder and Chairman: Mr. David Nesbitt transitions to Emeritus Chairman

The Nesbitt Centre bid farewell to its founder and chairman, David Nesbitt, and his family in July 2022. They moved to Canada.

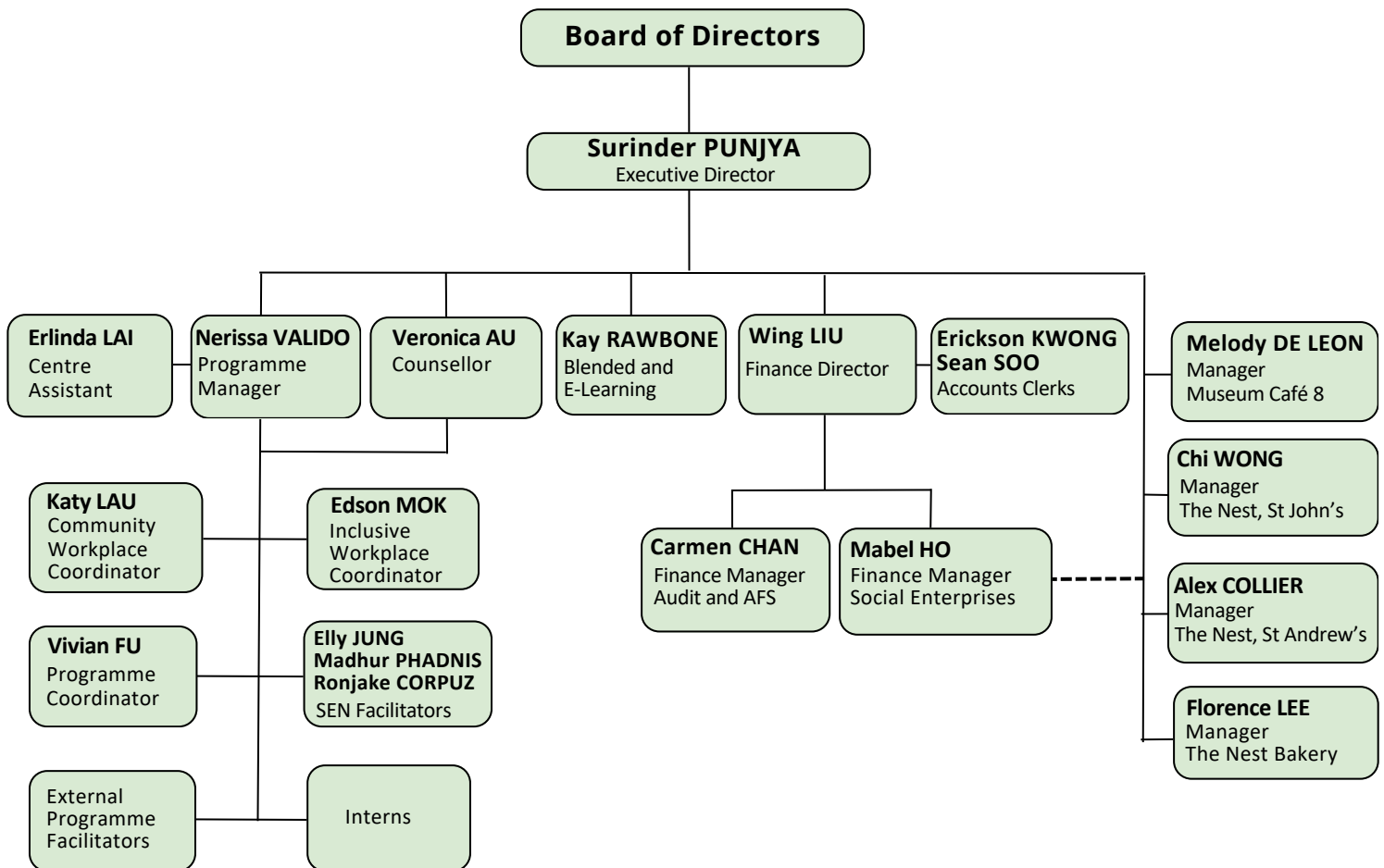
We are immensely grateful for their unwavering support and will miss them dearly as they embark on this new chapter in their lives. We wish them all the best.



The Nesbitt Centre Limited

Organisation Chart

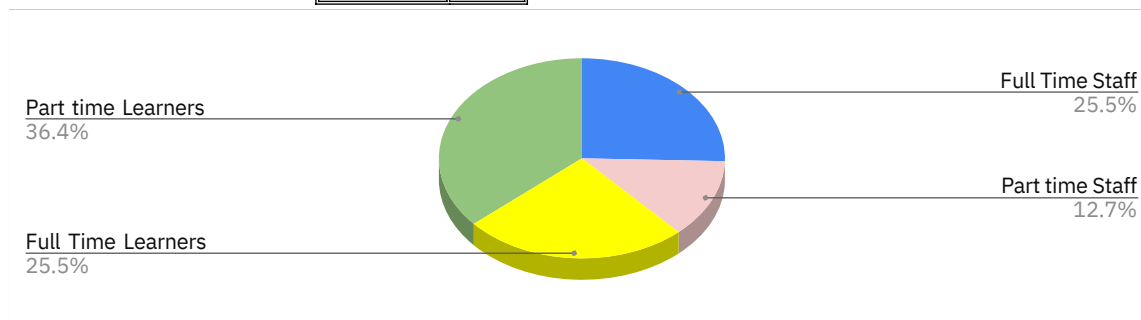
as at March 2023



Demographic - The Nesbitt Centre Limited as at 31 March 2023

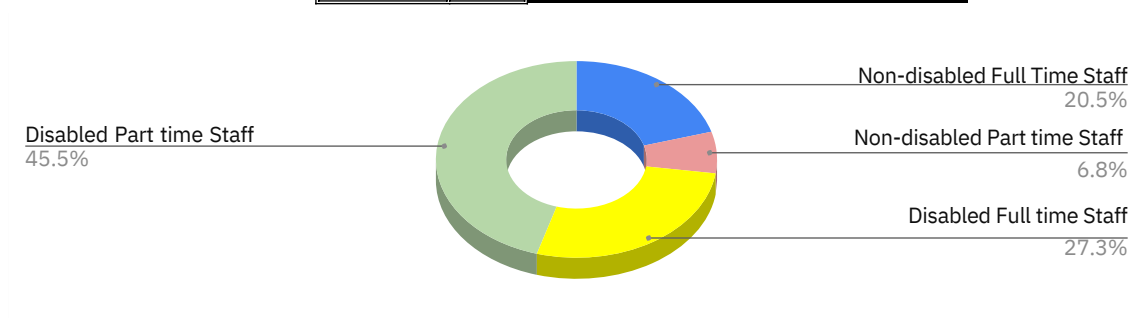
LEARNING CENTER (DAC) / PAMELA YOUDE (PY) RESIDENTIAL CENTRE

Staff Category	Overall Total	Ratio
Full Time Staff	14	25.5%
Part Time Staff	7	12.7%
Full Time Learners	14	25.5%
Part Time Learners	20	36.4%
Total	55	100.0%



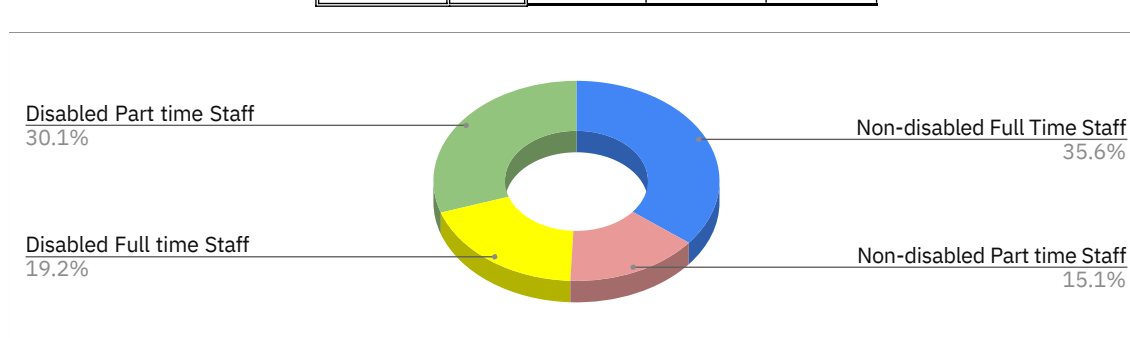
SOCIAL ENTERPRISES

Staff Categories	Overall Total	Ratio	St John's	Museum Café8	St Andrew's	Nest Bakery
Non-disabled Full Time Staff	9	20.5%	1	4	1	3
Non-disabled Part Time Staff	3	6.8%	0	2	0	1
Disabled Full Time Staff	12	27.3%	0	4	2	6
Disabled Part Time Staff	20	45.5%	2	15	3	0
Total	44	100.0%	3	25	6	10



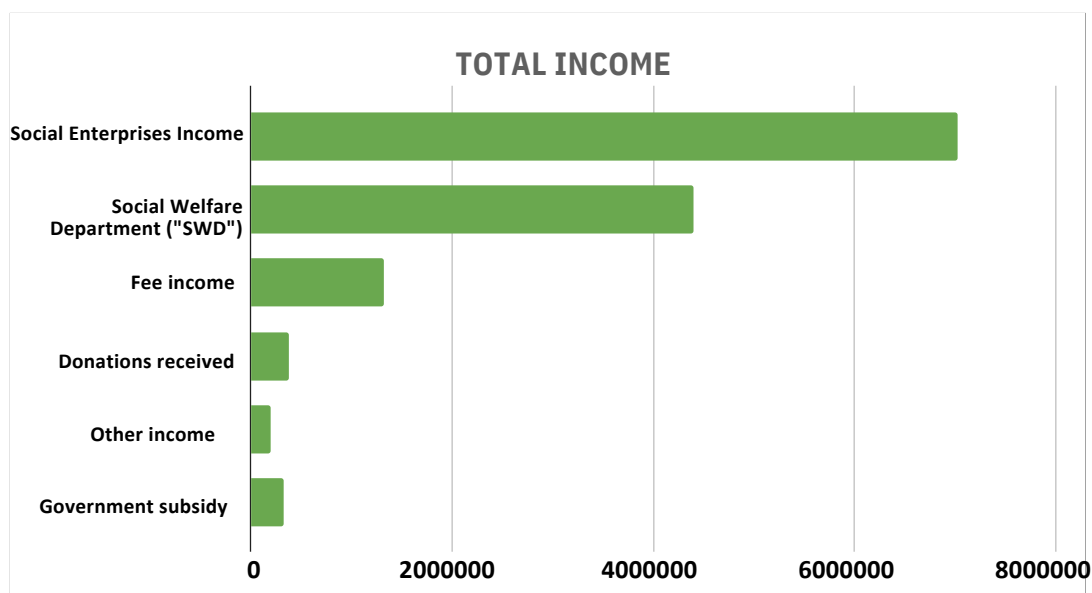
OVERALL:THE NESBITT CENTRE STAFF

Overall Staff Category	OVERALL TOTAL	RATIO	Management, Admin & Finance	Learning Centre	Social Enterprises
Non-disabled Full Time Staff	26	35.6%	3	14	9
Non-disabled Part Time Staff	11	15.1%	1	7	3
Disabled Full Time Staff	14	19.2%	2	0	12
Disabled Part Time Staff	22	30.1%	2	0	20
Total	73	100.0%	8	21	44

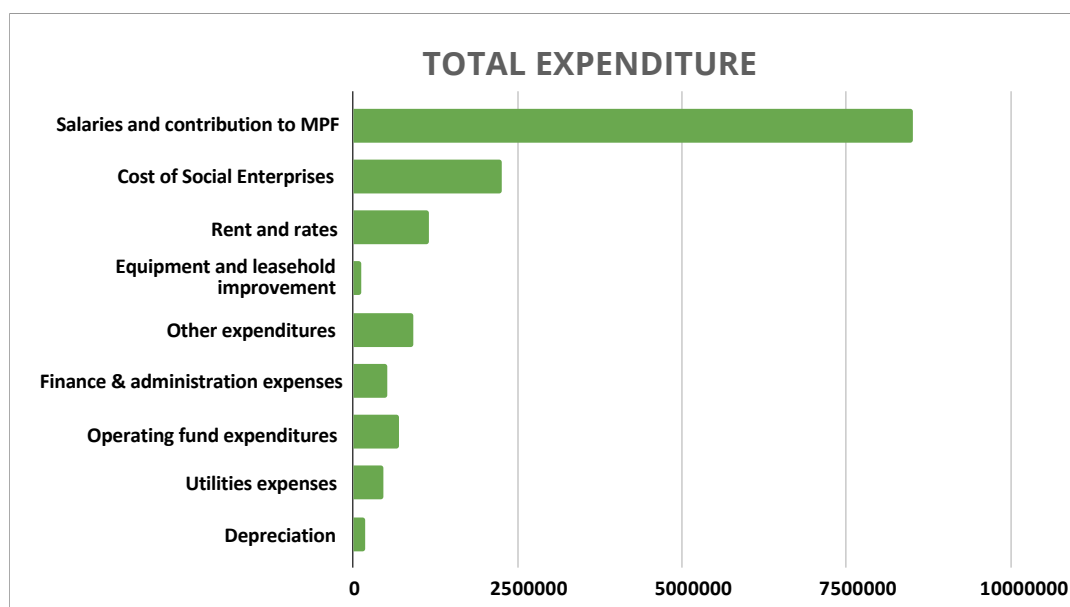


Statistics and Financial Summary

Total Income and Total Expenditure as at 31 March 2023



TOTAL INCOME	AMOUNT
Government subsidy	320,400
Other income	195,918
Donations received	380,448
Fee income	1,321,284
Social Welfare Department ("SWD")	4,395,339
Social Enterprise Income	7,022,746
TOTAL AMOUNT	13,636,135



TOTAL EXPENDITURE	AMOUNT
Depreciation	195,237
Utilities expenses	471,009
Operating fund expenditures	692,703
Finance & administration expenses	524,610
Other expenditures	910,981
Equipment and leasehold improvement	118,666
Rent and rates	1,152,324
Cost of Social Enterprises	2,267,106
Salaries and contribution to MPF	8,516,519
TOTAL AMOUNT	14,849,155

ACKNOWLEDGEMENT OF DONORS

We are grateful for the following individuals & organisations who have made donations in the year in support of our work and programmes.

Learning Centre / Day Activities Centre (DAC)

BNP Paribas Asset Management

The Nest at St John's Cathedral

The Women's Corona Society

Museum Café8

Alipay HK Ltd.

Efes

Elliot T J E A C

Green Drinks

Ho & Fung Charitable Foundation Ltd.

Jer Lau Fun Club

Lucy

Public

Red Wine Friday

The Nest Bakery

Easy Live Ltd.

The Nesbitt Centre Ltd (TNC)

Andrew and Jin MacGeoch

Benevity, Inc.

Charitable Choice Ltd.

Charities Aid Foundation America

Holman Fenwick Willan

Hudson Soo

Johnson Chan

Leah Chow

Lodge St. Andrew in the Far East

Michael Lintern Smith

Rehabilitation Consultants

The Canadian Chamber of Commerce in Hong Kong

The Shamdasani Foundation

The Women's Corona Society

HOW YOU CAN SUPPORT US



DONATIONS are important to us

The Nesbitt Centre Limited secures funds from three major sources:

- Fees from learners attending programmes at our learning centre in Sai Ying Pun and residential and homeskills facility in Chai Wan
- Subvention from the Social Welfare Department of the HKSAR Government
- Corporate and Private donations from the community

Every year we receive generous donations from various walks of life in Hong Kong. This generosity has substantially empowered us to enrich services provided to our students.

Our donations supported:

- Additional therapy services and teaching aids at the TNC learning centre in Sai Ying Pun
- General enrichment of the TNC learning programmes
- Enhancing the music therapy programme at TNC & much more

A heart-felt thank you to all individuals and organisations who have supported and continue to support us.

If you would like to make a donation, kindly fill the Donation Form on the following page

Or scan here



If you have any spare time - WOULD YOU LIKE TO BECOME A VOLUNTEER?



VOLUNTEER

The Nesbitt Centre provides a professional platform for our volunteers and interns to contribute their time and expertise to support our students both at our learning centre in Sai Ying Pun, at our residential facility in Chai Wan and in the community.

If you are interested in becoming a volunteer or an intern, please email:

 info@nesbittcentre.org.hk

DONATION FORM 捐款表格

You may choose to make an online donation at www.nesbittcentre.org.hk

閣下亦可在本會的網站作網上捐款 www.nesbittcentre.org.hk

Thank you for your donations, please complete this form for receipting purpose and return it to The Nesbitt Centre Limited by Post or Facsimile or Email
感謝閣下的捐款，請填妥本表格作收據編發用途，選擇下列其中一種方式交回本會。

✉ LG/F Sai Ying Pun Community Complex
2 High Street, Sai Ying Pun, Hong Kong

☎ +852 2813 4536

✉ info@nesbittcentre.org.hk

All donations of HK\$100 or above are tax deductible. 捐款港幣一百元或以上，可申請免稅。

Donor Information 捐款者資料

☐ Corporate donor 機構捐款

☐ Individual donor 個人捐款

Organisation 機構名稱

Name 姓名

Address 地址

Phone number (Day Time) 日間聯絡號碼

Email address 電郵地址

☐ Donated by Credit card 以信用卡捐款

I would like to be a monthly donor
我希望以月捐方式支援貴會服務

Monthly donation amount 月捐金額

☐ HKD 200

☐ HKD 400

☐ HKD 600

☐ Other amount 其他金額 HKD _____

I would like to donate
我希望捐贈下述款項支援貴會服務

One-Off donation amount 單次捐款金額

☐ HKD 400

☐ HKD 600

☐ HKD1000

☐ Other amount 其他金額 HKD 港 _____

☐ Visa



☐ Master Card

萬事達



The authorization for The Nesbitt Centre Ltd. debit the specified amount on a one-off or monthly basis from below stated credit card account will continue after the expiry date of the credit card and with the issuance of a new card until further notice.

Cardholder's name 持卡人姓名

Card no. 信用卡號碼

Expiry date 有效期:

Month 月 ____ / Year 年 ____

Cardholder's signature 持卡人簽名

☐ Direct Deposit 直接存款至 to The Nesbitt Centre Ltd Bank Account



HSBC 滙豐銀行

172-9-056208

Please send this form together with the original bank receipt by fax or email.
請連同存款收據正本傳真或電郵回本會。

☐ Crossed cheque 劃線支票



Payable to The Nesbitt Centre Limited

Please write donor's name and phone number at the back of the cheque.
支票背面請寫上捐助者姓名及電話號碼並郵寄回本會。

☐ Paypal 貝寶



Via Paypal - The Nesbitt Centre

Please send a screenshot of the successful payment page with donor's name and phone number by email.
請把成功捐款的頁面截圖連同捐款者姓名及電話號碼並電郵回本會。

☐ PayMe Code



Please scan the PayMe code or click the link below:

請掃描PAYME 二維碼或登入以下連結:

☐ The personal data collected will be treated as strictly confidential and will be used only for receipting and communication purposes only.
If you would not like to receive any mailings from us, please check this box.

本表格所收集的個人資料將保密處理，只作為寄發收據及通訊用途。若閣下不欲收到本會郵寄或電郵的定期通訊，請在左方格子內加上剔號。

Donors will be acknowledged at our Annual Report. 為答謝閣下的慷慨捐助，捐贈者芳名將刊載於本會年報。

請在以下其中一個方格內加上剔號，表達閣下同意本會的年報捐助者鳴謝欄目上顯示閣下的姓名。

☐ To use the donor name 使用表格上的捐款者姓名

☐ I would like to use another name:

☐ No, thank you. 不用，謝謝。

欲刊登的名字為: _____



Donation Enquiry 捐款事項查詢: 852 2813 4550