

### Features :

- A flexible downlight solution supports surface mounting and retrofit installation ..
- UL, certified.
- High quality Iron shell with frosted PC diffuser.
- CCT selectable version optional
- High efficiency LM80 SMD LEDs.
- Provide true color rendering with 90+ CRI.

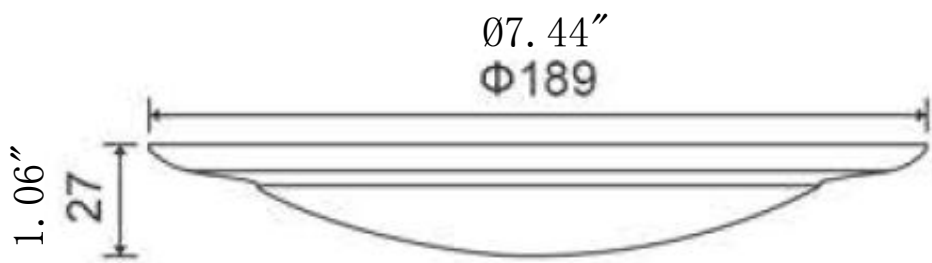


### Application:

- ◆ Residential.
- ◆ Property management.
- ◆ Office, Multi-family.
- ◆ Hospitality, Healthcare etc..



### Product Dimension:

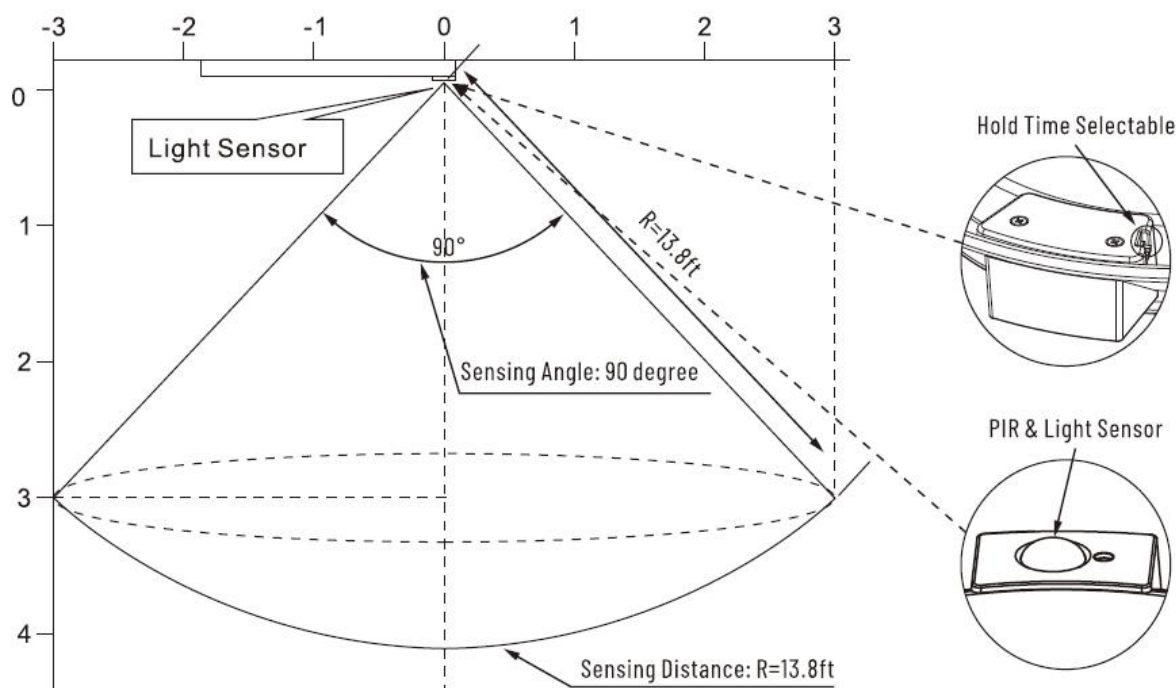


## Specifications

### LED Ceiling Light

Model:	SZ-DL15W6-SP (5CCT) (CL+PL)
Wattage:	15W
Size:	6 inch
CCT Selectable:	3000K/4000K/5000K
CRI:	90
Beam Angle:	120°
Lumens:	>1100LM
PF:	>0.9
Driver:	120V 50/60Hz
Sensor:	PIR Sensor + Light Sensor
Certification:	UL
Warranty:	5 years

## Motion sensor working principle



## Package

Size	Qty/Carton	Gross Weight
18.62*16.67*16.3"	40	12.4Kg

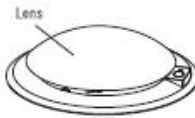
## Installation instructions

### A. SURFACE MOUNT



Turn Power Off

- 1: Before installing make sure power is turned off.

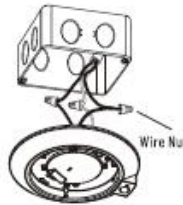


- 2: Remove the lens by anticlockwise.



Stickers

- 3: Tear off the 4" or 6" J-BOX install hole label from the fixture.



- 4: Connect the supply wires to the wires on the fixture using the three wire nuts included in the packaging.

- White-Neutral (White)
- Black-Hot (Black)
- Green-Ground (Copper wire)



- 5: Align appropriate holes in the mounting fixture with the holes in the J-BOX depending on the size of the box. Use the longer screws for a deep J-BOX or the shorter screws for a shallow J-BOX to attach the mounting fixture, flush with the ceiling.



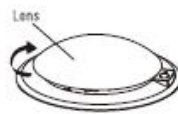
- 6: Turn on power and test light.  
BEFORE PROCEEDING:  
Slide the CCT selection switch to choose from three color temperatures (3000K, 4000K, 5000K). Try each CCT to determine which suits your room.
- 7: Reattach lens by twisting clockwise.

### B. RETROFIT

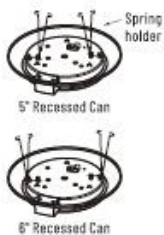


Turn power off

1. Turn off the circuit breaker that provides power to the light switch for the recessed lights.
2. Locate the housing.  
• Remove previous fixture, fixture may be hot so allow time to cool after turning off power



- 3: Remove the lens by anticlockwise.



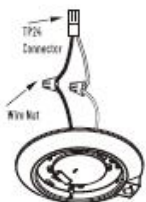
5" Recessed Can

6" Recessed Can

- 4: Place the springs into the keyhole slots on the back of the fixture using the Metric screws provided. Using a screwdriver, gently tighten in place.  
• Slot placement should be chosen based on can size (5" or 6").



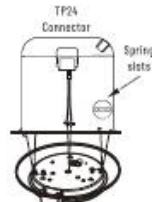
- 5: Connect the Disk wires to either the TP24 adapter wires using the wire nuts provided.  
• White to white; Black to black  
• It is highly recommended that a licensed electrician installs the ground wire to the box, if not already included in your existing can.



TP24 Connector

Wire Nut

- 6: Connect the TP24 adapter to the TP24 connector inside the recessed can.
- 7: Attach ground wire to the grounding screw located inside the can.  
\* E26 Adapter do not included



TP24 Connector

Spring slots

- 8: Pinch springs and line up trim ring with opening.
- 9: Hook disk springs into housing.  
• Strong springs. Use caution when compressing springs to fit inside can. Springs can bounce back quickly and cause injury.



- 10: Push disk into recessed can until secure
- 11: Complete the installation by screwing the lens back into place (counter clockwise).
- 12: Turn on circuit breaker and test the light.