

## LED Troffer Light



This troffer is field-adjustable, and can be programmed with a CCT of 3000K, 3500K, 4000K, 5000K, 5700K, 6000K, 6500K, eliminating the need to stock multiple color temperatures.

Ideal use for office spaces, walkways, schools/campuses, shopping centers, hospitality and



| Catalog Number   | Description           | Lumens  | Watts                  | CCT                         | Voltage     |
|------------------|-----------------------|---------|------------------------|-----------------------------|-------------|
| SZ-TR14-A40W-CCT | LED Troffer - 1' x 4' | 5200 Lm | Adjustable<br>40 W Max | Adjustable<br>3500K - 6500K | 120V - 277V |
| SZ-TR22-40W5-ACP | LED Troffer - 2' x 2' | 5200 Lm | Adjustable<br>40 W Max | Adjustable<br>3000K - 6500K | 120V - 277V |
| SZ-TR24-50W5-ACP | LED Troffer - 2' x 4' | 6500 Lm | Adjustable<br>50 W Max | Adjustable<br>3000K - 6500K | 120V - 277V |

## ORDERING GUIDE

Example: SZ-TR22-40W5-ACP

| Company Code<br><input type="text"/> | Fixture Type<br><input type="text"/> | Size<br><input type="text"/>                    | Wattage<br><input type="text"/> | Voltage<br><input type="text"/> | Sensor (optional)<br><input type="text"/>                          | ACP or CCT<br><input type="text"/>   |
|--------------------------------------|--------------------------------------|---|---------------------------------|---------------------------------|--|--|
| SZ<br>Company Name                   | TR<br>Troffer                        | 14<br>1' x 4'<br>22<br>2' x 2'<br>24<br>2' x 4' | A40W<br>A50W<br>40W5<br>50W5    | Blank<br>120-277V               | Blank<br>Without Photocell/Sensor<br><br>S<br>Sensor base (option) | CCT or ACP<br><br>Adjustable CCT and Power<br>40W: 15/20/25/30/40W or 20/25/30/35/40W<br>3500/4000K/5000K/5700/6500K or 3000/3500/4000/5000/6000K<br><br>50W: 25/30/35/40/50W or 25/30/40/45/50W<br>3500/4000K/5000K/5700/6500K or 3000/3500/4000/5000/6000K |

## LED Troffer Light

### Specifications

#### CONSTRUCTION

Constructed of one-piece ribbed unitized housing and corners that interlock, preventing damage to luminaire. All sides and corners are turned in and hemmed, removing sharp edges for safe handling and installation.

#### ELECTRICAL

Luminaire is built with the highest quality 120-277VAC drivers.

#### OPTICAL SYSTEM

Designed to reduce glare and improve light distribution through precision formed

#### Operating Temperature

Suitable for use in -20° C to 45° C (-4° F to 113° F).

#### Efficacy

130 lumens per watt.

#### DIMMING

0-10V dimmable standard.

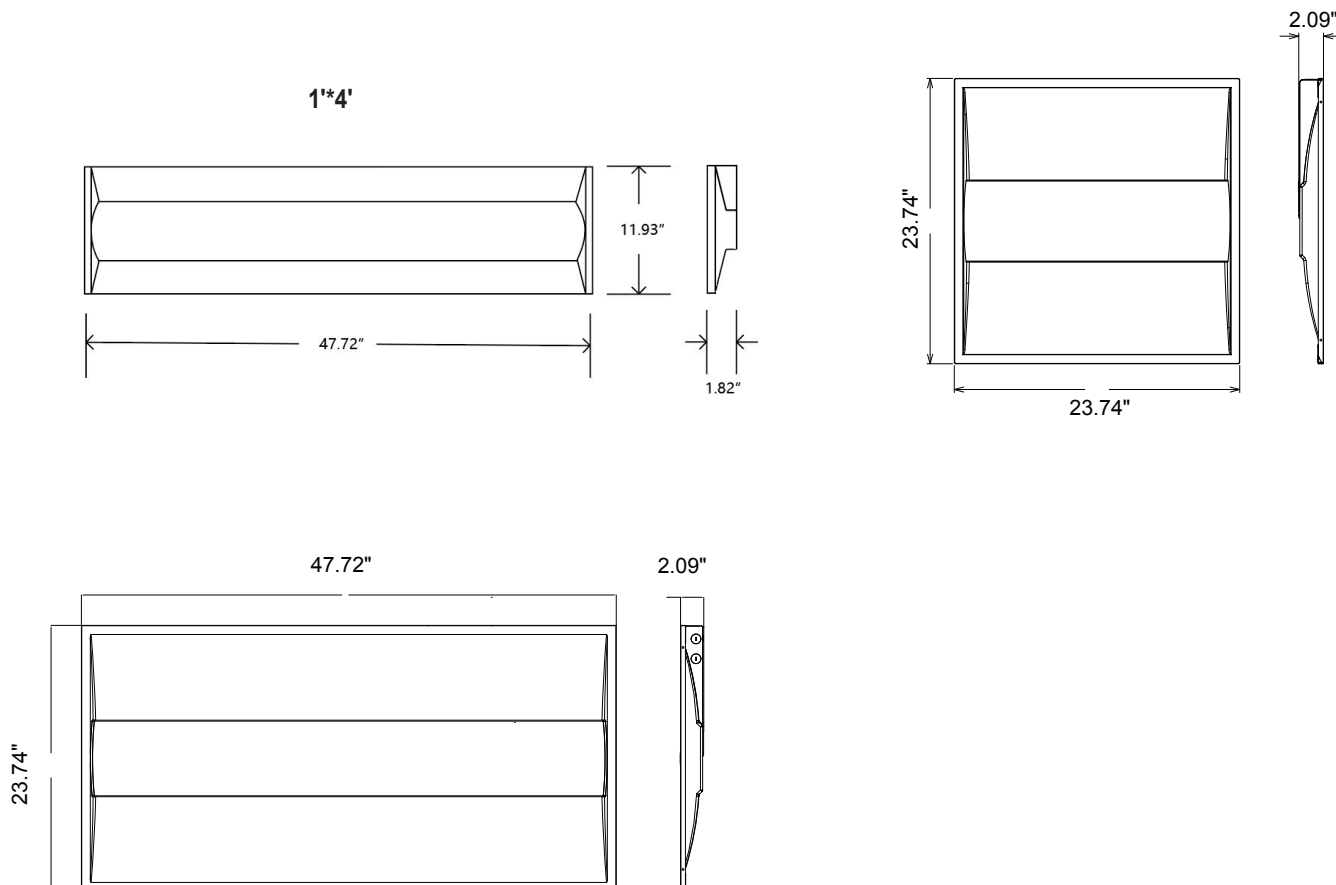
#### Certifications

ETL Listed, FCC, DLC 5.1.

#### WARRANTY

5 Years Limited Warranty.

### Dimensions



## LED Troffer Light

### Accessories (Optional):

1. Emergency Driver: 8W or 15W, Recharge time:  $\geq 24$ Hrs, Discharge time :>90minutes.
2. Sensor: PIR Sensor or Microwave Sensor.

### Emergency Driver (Optional)

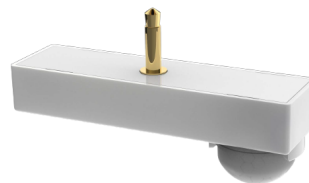


### Sensor (Optional With Sensor Base)

Microwave Sensor  
SZ-MS-M



PIR Sensor  
SZ-MS-P



### Wiring

