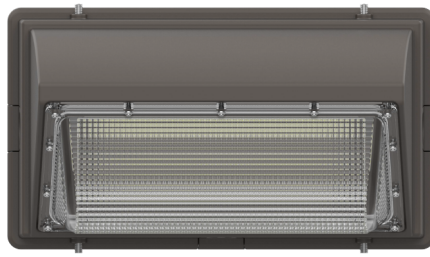
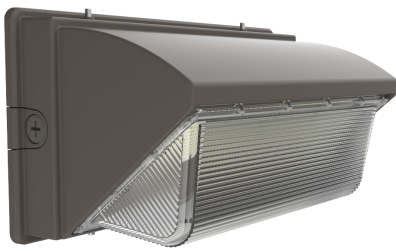


LED Wall Pack



LED wall packs are your first choice for wall-mounted lighting projects. 3 IN 1 switch is selectable for lighting direction, CCT, wattage. and photocell control. photocell can automatically turn off at sunrise or during the day, and automatically light up at sunset or night. Application: Pathways, Hospitality, Walkways, Hallways, Outdoor Commercial, Outdoor Residential.



Catalog Number	Description	Angle	Lumens	Watts	CCT	Voltage
SZ-WP200WA-5000K (ACP)	LED Wall Pack Light	110	26000 Lm	Adjustable 150W/180W/200W	Adjustable 4000K/5000K/6000K	120V - 277V

ORDERING GUIDE

Example: SZ-WP200WA-5000K (ACP)

Company Code	Fixture Type	Wattage	Voltage	Sensor	ACP
<input type="text"/>	<input type="text"/>	<input type="text"/>	<input type="text"/>	<input type="text"/>	<input type="text"/>
SZ Company Name	WP Wall Pack Light	200W	Blank 120-277V	Blank Photocell	ACP Adjustable CCT and Power 200W:150/180/200W 4000/5000/6000K

LED Wall Pack

Specifications

Housing

Sealed die-casting profile for outdoor applications.

Electrical

Standard 120V - 277V
0-10V dimming standard with a dimming range of 100% to 10%. PF > 0.9. Surge protection: 6KV. with Photocell

CCT and CRI

Adjustable 4000K/5000K/6000K. CRI 70.

Angle

110

Operating Temperature

Suitable for use in -40° C to 45° C (-40° F to 113° F).

Efficacy

Up to 130 lumens per watt.

Lifespan

L70 >50,000 Hours at 25°C (77°F).

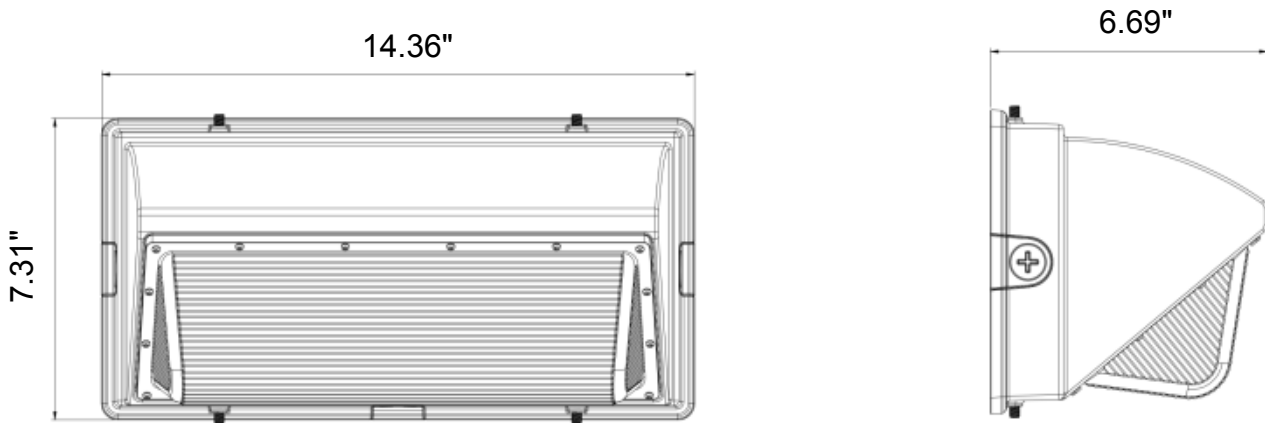
Certifications

UL Listed for wet locations, IP65 rated.

Warranty

5-year limited warranty.

Dimension:



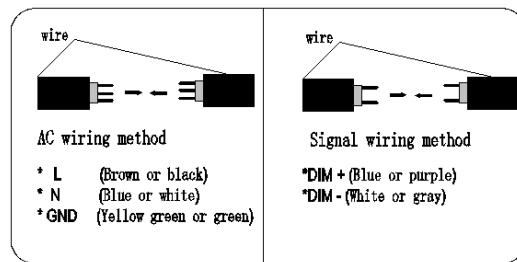
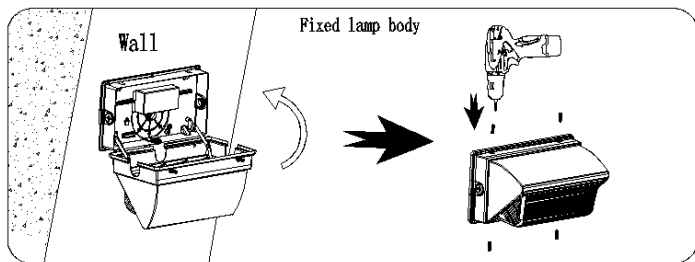
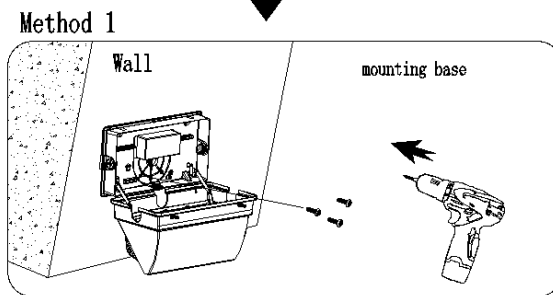
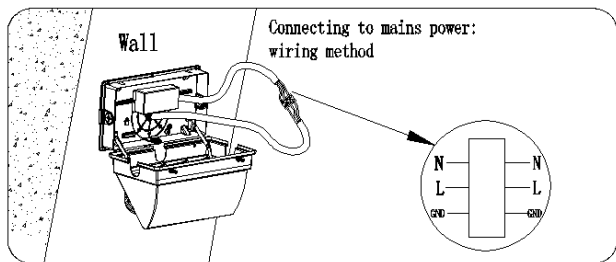
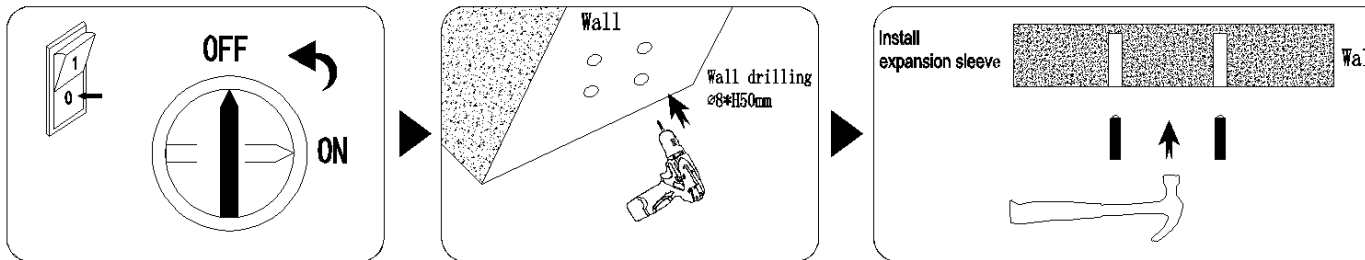
Packing/Weight:

Model	Outer box (L*W*H)	Qty/CTN (pcs)	N.W./pcs (lbs/kg)	G.W./CTN (lbs/kg)	Remark
SZ-WP200WA-5000K (ACP)	15.75*9.06*8.46" 400*230*215mm	1	8.36/3.8	9.9/4.5	

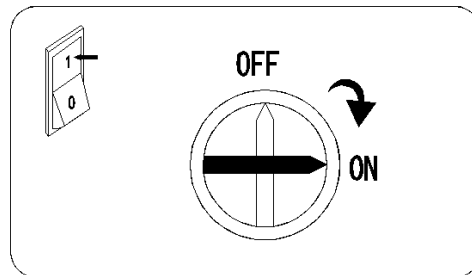
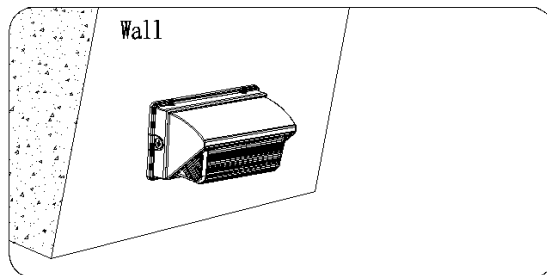
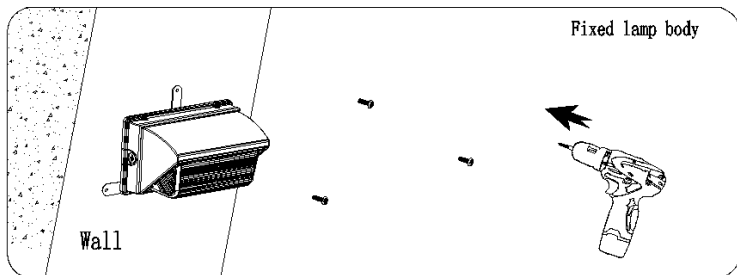
LED Wall Pack

Installation:

⚠ Warning:
Turn off the power switch



Method 2



⚠ Warning:

1. Please turn off the power during installation, and do not connect or disconnect the load
2. Pay attention to fire prevention