

LED COB STRIP



Application



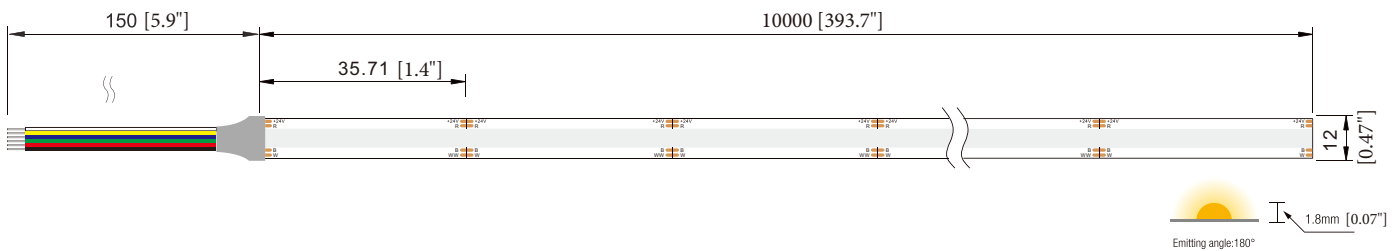
Product Features

1. No spot, no shadow, soft light.
2. The antistatic grade (MIL – STD – 883 – e) : HBM level 2 (2000 ~ 4000 v)
3. The largest emitting angle can reach to 180°
4. Can be cut, and be free to cut off and weld along with the above cutting line.
5. Certification:UL

PARAMETER

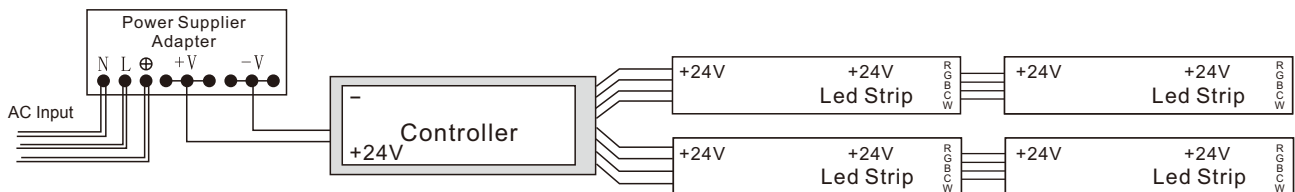
Model No.	JE-006M-ST-COB-RGBCW	SMD Type	COB
Input voltage	24V	Warranty	3 years
CRI(Ra)	/	Working temperature	-25 °C ~ +45 °C
Bram angle	180°	Cutable length(inch)	1.4"
LEDs /m	840LEDs	PCB Width(inch)	0.47"
CCT	RGBCW	Watt	5W/Foot
Lumen	/	IP Grade	IP20

Structure & Parameter



Wiring Diagram

● RGBCW

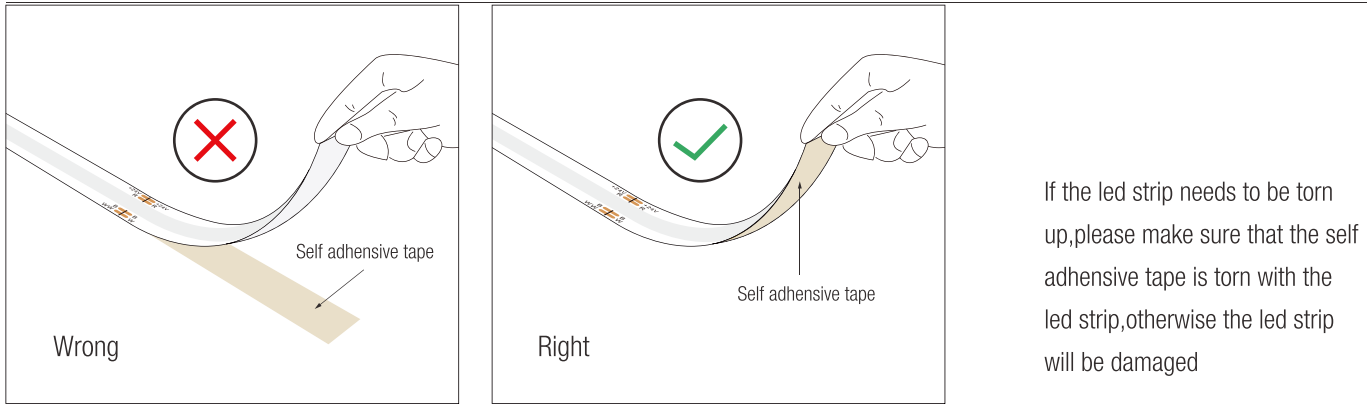


Tips: One Controller can only Maximum take 5050-60P Led strip 15meters.

Power supplier/adaptor should focus on the power of led strip.

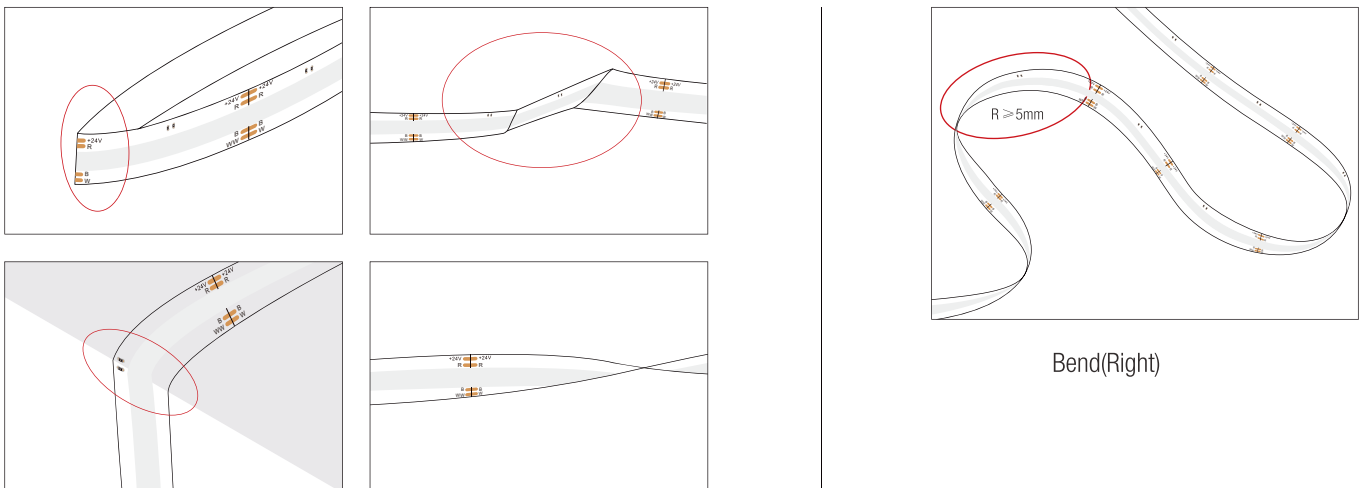
Black Wire connect with the Positive, and Green Wire with G, Red wire with R and Blue Wire with B.

Cautions



If the led strip needs to be torn up, please make sure that the self adhesive tape is torn with the led strip, otherwise the led strip will be damaged

When install the led strip, please note the installation technique. The led strip can be bent, but not distorted, as shown below.



Distortion(Wrong)

Bend(Right)

- LED strips are low voltage products, you must use the power supply(transformer). Please don't connect the led strip directly to the AC 110v or AC 220v, otherwise it will burn out the LED strips.

- Clean up the installation surface, it will ensure the reliability of the adhesive. The electrical connection process must be operated by a professional person.