

The Tangram logo, featuring the word "tangram" in a lowercase, sans-serif font. A small, stylized white triangle is positioned above the letter "a". The logo is set against a solid orange rectangular background.

tangram.

# HEALTH SPACES

A VENDOR SHOWCASE

A high-angle photograph of a modern, open-plan office or lounge area. The space features a dark, textured carpet, several light-colored modular sofas, and a large, brown, bear-shaped ottoman in the foreground. A man in a black shirt and khaki pants is standing in the center, gesturing towards a large display board. Other people are seated on the sofas, and a small round table with a plant is visible. The background shows a glass-walled staircase and a large window.

APRIL 29 – MAY 9



The role of our healthcare systems has never been more vital than it is today. Hospitals and clinics are filled with patients seeking care, families offering support, and healthcare professionals working tirelessly to provide life-saving treatment. At the same time, technology is evolving at an unprecedented pace, expanding access to telehealth for those unable to leave their homes.

This moment presents an opportunity to transform the healthcare experience for both patients and providers. How can we create environments that help medical staff stay energized and focused, design patient areas that promote healing and emotional well-being, and develop shared spaces where families feel welcomed and supported?

The spaces we heal in matter. That's why we've assembled this vendor showcase—to bring innovative, human-centered designs to the forefront and inspire new possibilities for the future of healthcare environments.



*Kellie Reed*

**Kellie Reed**  
Vice President, Business Development  
+ Healthcare Practice Leader  
Tangram



Milliken provides sustainable, high-performance flooring solutions for healthcare spaces, enhancing durability, safety, and cleanliness. Our resilient flooring offers exceptional durability, scratch and stain resistance, and long-term appearance retention, while WellBAC® cushion-backed carpet extends product life and improves acoustics by reducing noise by up to 50%. OBEX™ entrance flooring helps keep facilities clean by trapping dirt and moisture at the door. Our flooring exceeds safety standards for slip resistance and includes proven moisture solutions with no-test warranty options. All products are rigorously tested and third-party certified for healthcare use, backed by industry-leading warranties of up to 22 years. Additionally, Milliken's product offering is Red List Free, Declare: 3rd Party Verified, Greenhealth Approved, and Carbon Neutral, ensuring environmentally responsible solutions.



**Becca Dobbs**  
Account Manager  
becca.dobbs@milliken.com  
310.504.4635

**Nicole Hough**  
Territory Account Manager  
nicole.hough@milliken.com  
949.919.4637



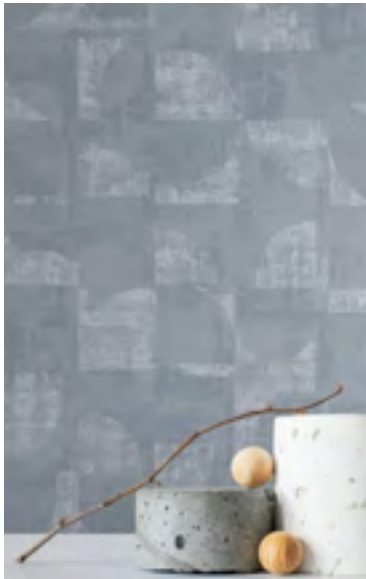




Momentum Textiles & Wallcovering : As today's largest supplier of textiles and wallcovering in commercial interiors, our mission is to bring together the industry's most sought after innovators, designers and brands to leave a lasting impact on the entire industry for years to come.



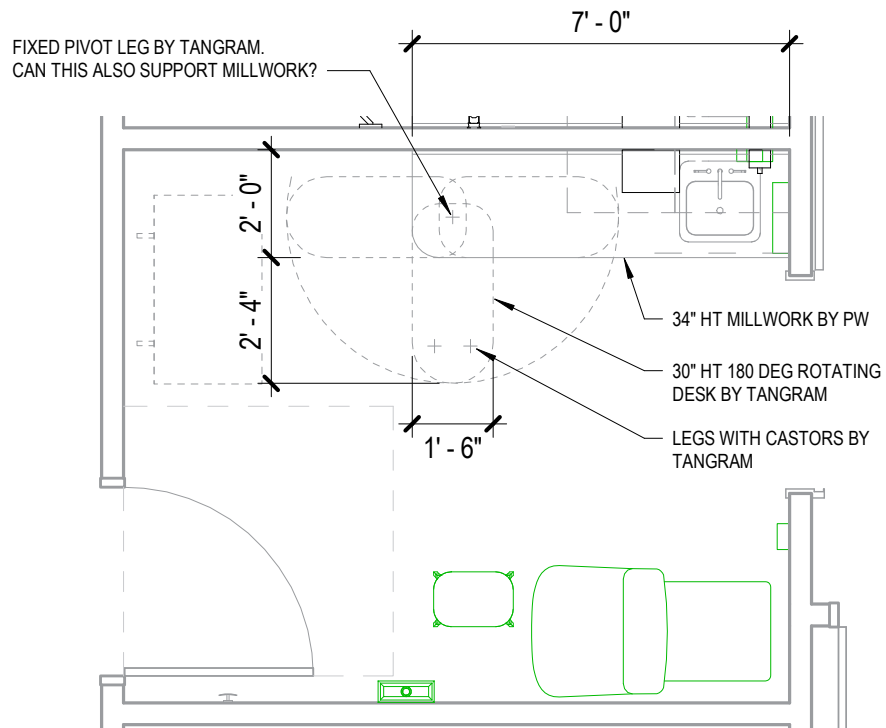
**Elise Ozawa**  
**Sales Representative**  
Orange County, Long Beach,  
Inland Empire & Los Angeles  
[eozaawa@momtex.com](mailto:eozaawa@momtex.com)  
310.402.4898



# studio other

We don't believe in one-size-fits-all.

Studio Other is a team of industrial designers and engineers. With over 25 years of industry experience, we specialize in bespoke furniture for our clients through a process of co-design and investigating end user behavior. To design well, you need to make well. At our core, we're makers + builders with an obsessive attention to detail and a passion for good design.



**Charlotte Wiederholt**  
President

cwiederholt@studioother.com  
562.201.4419



## Design Objective:

- Design + engineer a table strong enough to support a child.
- Must have option to swivel when not in use.
- All with no leg.

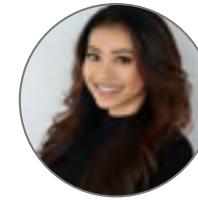




**ShawContract®**

Shaw Contract provides flooring that delivers a purposeful blend of design elements, durability, materiality and sustainability. Our products set the foundation for healing spaces.

With Greenhealth Approved and PVC-free resilient sheet and tile options, Shaw Contract offers solutions that positively impact people and planet.



**Tweet Ho**  
Account Manager

tweet.ho@shawcontract.com  
424.443.0201



**Anne Konie**  
Account Manager

anne.konie@shawcontract.com  
424.522.2303



**Deb Smith**  
Account Manager

deb.smith@shawcontract.com  
949.939.3496



**Marcos Alday**  
Senior Account Manager

marcos.alday@shawcontract.com  
213.440.8920







Founded in 2000, Cambria is the leading family-owned, American-made producer of the purest quartz surfaces. Cambria's innovative and iconic quartz designs are stain resistant, nonporous, durable, and maintenance free, backed by a transferable Lifetime Warranty. Cambria offers the broadest design palette in the industry through a network of premium independent specialty retail and trade partners, empowering clients to create personalized and uncompromising spaces. #MyCambria



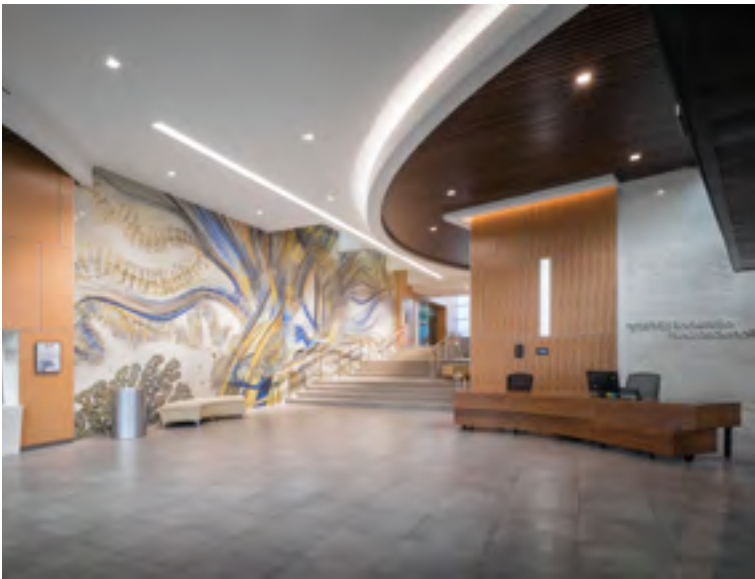
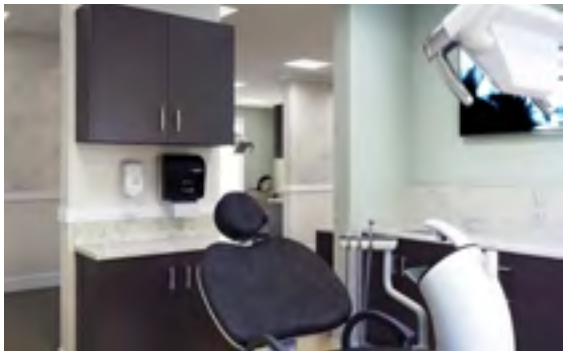
**Andrew Yi**  
 Director, Healthcare &  
 Senior Living  
 andrew.yi@  
 cambriausa.com  
 510.207.7834



**Emi Cecil**  
 Commercial Market Rep,  
 Los Angeles & Central Coast  
 emi.cecil@  
 cambriausa.com  
 310.720.1004



**Andrea Ruelas-Valdez**  
 Commercial Market Rep,  
 OC & San Diego  
 andrea.ruelas-valdez@  
 cambriausa.com  
 949.844.0131





Falkbuilt's Digital Component Construction is a simple offsite approach. We manufacture digital components in a compact factory and ship to site for a fast and clean install, with far fewer materials, zero dust and virtually no waste onsite. Trades follow the same process as conventional construction but work anywhere in the schedule, in a quarter the time, with far more efficient use of labor.



**Meg Moussamih**  
Falkbuilt Los Angeles

[meg.moussamih@falkbuilt.com](mailto:meg.moussamih@falkbuilt.com)  
508.837.0062



**Joanna Prazak**  
Falkbuilt HQ

[joanna.prazak@falkbuilt.com](mailto:joanna.prazak@falkbuilt.com)  
713.208.0357







Calyx Healthcare offers visual display products to maintain safety, reduce the risk of infection, positively impact HCAHPS scores and support a system of care by enhancing communication with doctors, nurses, and medical staff.



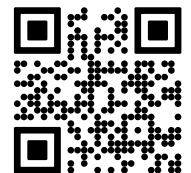
**Dean De Gouveia**  
Edgewater Contract, Principal & Owner  
dean@edgewatercontract.com  
949.278.1971



At JSI, we understand the transformative power of healing spaces—where passion and purpose flourish, even in challenging times. With a legacy of innovation and a commitment to human-centered design, we create exceptional furniture that enhances caregiving, recovery, and rejuvenation. Grounded in research and market insights, our solutions provide comfort and support where it matters most—because we believe in the extraordinary potential of environments where people love to thrive, care, and heal.



**Dean De Gouveia**  
Edgewater Contract, Principal & Owner  
dean@edgewatercontract.com  
949.278.1971







carolina

Healthcare environments should embody comfort, wellness, security, and a welcoming ambiance. The journey to recovery starts with fostering a sense of well-being. Thoughtfully designed spaces uplift caregivers, instill pride and boost their efficiency, and reduce contamination risks while nurturing their wellness alongside patients. Our Carolina portfolio, complemented by our OFS products, is crafted to support comprehensive facility design, enhancing the healing process for caregivers, patients, and visitors alike.



**Bianca Malone**  
District Sales Manager  
bmalone@ofs.com  
951.403.1392



**Laura Misel**  
National Account Director,  
Healthcare  
lmisel@ofs.com  
310.650.9977







Connecting People, Spaces + Care

For over 35 years, customers have trusted Global Furniture Group to provide product solutions which connect patients, caregivers and their families. As healthcare needs change, our products will continue to foster a positive experience by incorporating choice, comfort and support.



**Christy Bouquet**  
Regional Sales Manager  
Southern California + Desert Region  
cbouquet@globalfurnituregroup.com  
949.543.4244



**Shawn Johnson**  
Territory Manager, Dealer Sales  
Southern California  
sjohnson@globalfurnituregroup.com  
951.415.7948





Covoc is a leading manufacturer of privacy curtains and curtain track systems, and a trusted distributor of commercial window-shading solutions. Family-owned and based in Southern California since 1964, Covoc sets the industry standard with exceptional workmanship and personalized service. Leveraging our relationships with premier fabric and window shade manufacturers, we deliver high-quality, environmentally-friendly solutions specifically designed for healthcare, educational, and commercial spaces. Our products achieve an ideal balance of functionality, aesthetics, and sustainability—creating comfortable, inspiring environments that promote wellness and productivity.



**Amy Annis**  
Director of Healthcare Sales

amy.annis@covoc.com  
714.335.4919



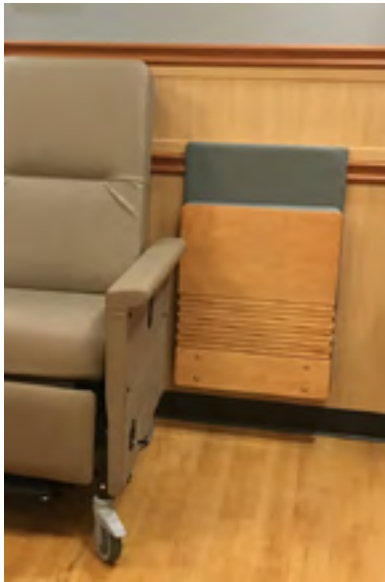




Sedia Systems design-driven products provide the ultimate healthcare solutions from waiting rooms, corridors and patient rooms to nurses stations, training rooms and auditoriums. Our JumpSeat Collection provides space-saving solutions where healthcare facilities need them most. We offer numerous upholstery options, including anti-microbial, anti-bacterial and bleach-cleanable, that are ideal for healthcare environments.



**Shannon Jeffries**  
Regional Sales Manager  
sjeffries@sediasystems.com  
619.961.6900





## Hygienic Privacy at the Flick of a Switch

A switchable film that can be retrofitted to existing glass.

KwickSwitch is the latest innovation from KwickScreen, allowing you to choose between opaque or transparent windows at the push of a button. Its wipe clean surface makes it an excellent option for infection control and provides a clean, uncluttered, timeless look for your healthcare space.





**David Logsdon**  
Principal

david@levelwestreps.com  
714.329.1636

LevelWest Healthcare offers tailored solutions for healthcare spaces, enhancing comfort, functionality, and aesthetics from patient rooms to waiting areas. Our brands prioritize quality, durability, and ease of maintenance for the well-being of patients and caregivers. Our team provides personalized guidance for a seamless project and are committed to a customer-centric approach. Bottom line: We passionately support your project at every step, aiming to exceed your client's vision for healing environments.



# DESIGNTex

We design and manufacture applied materials for the built environment. For over sixty years, we have been inspired to improve how materials fit into life and enhance the human experience.



**Donna Dawson**  
Representative  
ddawson@designtex.com  
310.528.7444



**Kim Keirstead**  
Representative  
kkeirstead@designtex.com  
949.230.7011







Steelcase is a global design and thought leader in healthcare, work, and education environments. Through our broad portfolio of brands, we offer furniture, interior architecture, and technology solutions that help create spaces where people can heal, work, and learn at their best.

Steelcase Health believes the experience of care begins with more caring spaces. We design thoughtful, sustainable solutions across the entire healthcare journey—from waiting and transition areas to patient rooms, behavioral health, and clinician spaces—to support better outcomes for everyone involved in the work of care.



**Shelby Delacruz**  
Regional  
Healthcare Manager

sdelacr3@steelcase.com  
253.569.8140



**Ashley Gilliam**  
Regional  
Healthcare Manager

agilliam@steelcase.com  
803.467.1764



**Carlos Acuna**  
Regional  
Manager

cacuna1@steelcase.com  
415.837.3263



# SYMBIOTE

Symbiote delivers robust, high-performance furniture designed for demanding environments. Our solutions provide the foundation for any lab, whether for research, testing, or creation. With load capacities exceeding 1,000 pounds, eight different top options, height adjustability, and built-in product mobility, we cater to your specific needs—whether it's for an individual bench or a custom-built workspace. Simply put, serious furniture for serious work.



**Ron Frantz**  
Principal  
ron@sculpturalspaces.com  
323.271.6554







JANUS et Cie®

For more than 45 years, JANUS et Cie has been an industry leader in design-driven furnishings for the outdoors. The luxury furniture brand serves commercial, hospitality and residential clients with a dedicated focus on outstanding quality, superior craftsmanship and unparalleled service. JANUS et Cie offers a diverse catalog of over 6,000 pieces—each design remarkably distinguished in concept and form—and in addition to furniture, includes a growing commitment to decorative accessories and performance textiles.



**Cindy Andera**  
Contract & Site Sales Specialist  
candera@janusetcie.com  
714.458.9771







At Kwalu, we create nurturing environments that inspire care, comfort, and connection in healthcare and senior living. For over 30 years, we've crafted high-quality, durable furniture that enhances the spaces where people live, heal, and build community. What sets us apart is Protea™, our proprietary, non-porous material that offers the beauty of wood with unmatched durability. Inspired by the resilient Protea flower, it ensures our furniture withstands high-traffic environments while remaining easy to clean and maintain.



**Haley Eaves**  
Business Development  
Manager – Healthcare  
heaves@kwalu.com  
678.690.5680



**Lisa Schroeder**  
Vice President,  
Healthcare Sales - West  
lschroeder@kwalu.com  
310.721.3307

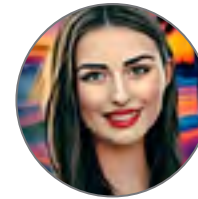




Stance Healthcare and EPIC trends offer unparalleled experience and expertise in healing environments, with a particular focus on healthcare and behavioral health facilities. Together, we are committed to providing patient-centered furniture solutions that improve the healthcare experience for patients, families, and caregivers. With a shared dedication to service excellence for our customers, we anticipate a promising future ahead.



**Terri Burkhart**  
Principal, IIDA  
terri@epictrends.net  
760.717.7167



**Sabrina Benavides**  
A&D Market Manager  
sabrina@epictrends.net  
562.353.7411



**Josh Mcleish**  
Market Manager  
josh@epictrends.net  
949.973.2207







Paulduan Creation is a SoCal based, design-oriented outdoor furniture brand, solely dedicated to B2B, Contract grade outdoor furniture. Design Difference, Meticulous Engineering and Personal service are the key pillars. Paul Duan, owner and chief designer, has been dedicated in the outdoor furniture industry since 2001.



**Paul Duan**  
**Owner**  
 pd@paulduancreations.com  
 909.413.2600



**Bobby Henderson**  
**Furniture Sales Rep**  
 bobby@mza-usa.com  
 818.309.3288





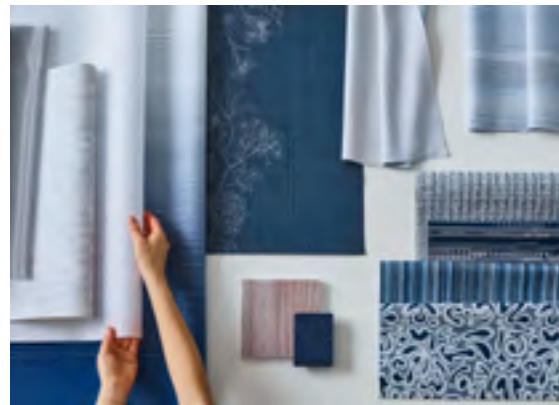
# Carnegie

Carnegie is a leading designer and manufacturer of sustainable commercial textiles and acoustic solutions. Founded on the principle that great design goes deeper than aesthetics, the company has championed responsible innovation for 75 years, developing durable and healthy alternatives to PVC, like our revolutionary Xorel® brand fabrics, proving that high-performance, beautiful and elegant solutions can be delivered sustainably. As the nation's only B-Corp certified textile manufacturer and forever PVC-free company, Carnegie leads the industry with an authentic commitment to sustainability, using education and advocacy in service of our mission: galvanize the design community to build a better future with materials that matter.



**Kimberly McCready**  
Solé So Cal

kimberly@solesocal.com  
562.533.6777



# Pineapple

Pineapple creates mindfully designed furniture for challenging environments. From behavioral health facilities, hospitals, and correctional settings, Pineapple offers safe and robust furniture that is built to last. Pineapple products feature reduced-ligature options and go through various strength tests that prove quality and dependability. By taking time to listen, and understand what really matters, Pineapple can match requirements to the products or services that deliver ideal solutions; all while ensuring even the smallest of details are designed for peace of mind. #DesignedForPeaceOfMind



**Daniel White**  
Principal

daniel.white@pineapplecontracts.com  
800.496.9324



**Lisa Cox**  
Client Account Executive

lisa.cox@pineapplecontracts.com  
800.496.9324





## PETER PEPPER PRODUCTS

Since 1952, Peter Pepper Products has been redefining the accessories market with thoughtfully designed pieces that surprise and delight. Our dedication to craftsmanship and quality has established us as a leader, creating products that don't just meet needs—they spark moments of inspiration.

Proudly rooted in Los Angeles and made in the USA as part of the DeskMakers family, we carry forward Peter Pepper's legacy by blending bold ideas with practicality. From innovative solutions to impeccable service, we turn everyday essentials into purposeful designs that energize and transform spaces.



**Bismark Padilla**  
Rodenbeck Associates  
bismark@rodenbeck.com  
626.512.1970



**Terri Conley**  
Rodenbeck Associates  
tc@rodenbeck.com  
310.386.4986



**Hayden Rodenbeck**  
Rodenbeck Associates  
hayden@rodenbeck.com  
714.600.0487



**Justin Rodenbeck**  
Rodenbeck Associates  
justinr@rodenbeck.com  
310.980.1429





La-Z-Boy Healthcare | Knú Comfort is a healthcare furniture manufacturer that delivers high performance upholstered products for the patient room and public area spaces, while offering the industry's most comprehensive recliner offering and options. Our mission is to provide the best-in-comfort furnishings for healthcare and wellness environments.



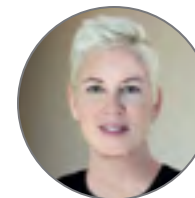
**Adam Stemle**  
President  
LaZBoay Healthcare®  
| KNÚ Comfort

astemle@getknu.com  
812.367.2068



**Jason Davies**  
Director of Strategic Initiatives  
LaZBoy Healthcare®  
| KNÚ Comfort

jdavies@getknu.com  
616.227.9919



**Lori Sherwood**  
Representing LaZBoy  
Healthcare® | KNÚ  
Comfort in California

lori@sherwoodandpartners.com  
949.353.0024





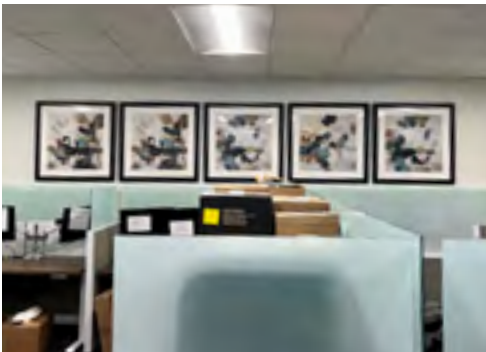
Art Concepts was founded by Barry Goodman in 1983. Originally in the San Diego area, he has since expanded both to LA, OC and the Inland Empire, as well as servicing accounts all across the country, including sites in Hawaii.

Our services include a range of art, including print art, canvas pieces, limited edition and original art, as well as vinyl wall murals and coverings and acrylic and large format artwork. We work with architects, designers, and facility managers in coordinating and planning what works best for the space both in aesthetics as well as color and placement. Most recently we have expanded into the Healthcare field, and are currently working with hospitals and medical centers across the southern California region. We are also shipping and installing art in Behavioral Centers in Texas, Louisiana, Mississippi, Florida and Oklahoma.

We work directly with you in order to provide the best art program for each client and situation. We work locally and nationwide and can ship, deliver and install art all throughout the country.



**Barry Goodman**  
 Founder  
 bgoodman@artconceptz.com  
 800.727.5552





At ERG International, everyday is a new day of possibilities for creative design of new products that invoke comfortable places to sit, and functional places to work. We start by hearing a need, and then brainstorming in the hopes to design build those needs, with products that are comfortable, attractive, functional and built with the finest materials and craftsmanship. We support a range of markets with a diverse portfolio that covers education, hospitality, healthcare and corporate spaces. We are proudly represented by RODENBECK for all Southern California.



**Bismark Padilla**  
Rodenbeck Associates  
bismark@rodenbeck.com  
626.512.1970



**Terri Conley**  
Rodenbeck Associates  
tc@rodenbeck.com  
310.386.4986



**Hayden Rodenbeck**  
Rodenbeck Associates  
hayden@rodenbeck.com  
714.600.0487



**Justin Rodenbeck**  
Rodenbeck Associates  
justinr@rodenbeck.com  
310.980.1429





# krug

Founded in 1880, Krug is an Ontario-based, leading designer and manufacturer of office, healthcare, higher education and hospitality furnishings. We collaborate with architects, designers and other furniture professionals to create beautiful spaces the world over. Known for our innovation in solving the challenges others can't, we craft products of the highest quality and aesthetic appeal, bringing value to each and every one of our customers.



**Jim Carey**  
VP, Sales West  
jcarey@krug.ca  
916.837.3170



**Justin Rodenbeck**  
Principal  
justinr@rodenbeck.com  
310.980.1429



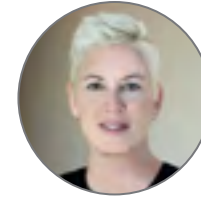


A pioneer. By design. LDI Interiors helped invent the PVC-free upholstery category with a single mission in mind - create safer and more environmentally friendly materials that out-perform industry standards. We make it easier for designers to shine with our wide range of upholstery solutions and our custom print-on-demand patterns.



**Karen Donaghy**  
LDI Solutions  
Director of Sales & Marketing

kdonaghy@ldiinteriors.com  
516.316.5496



**Lori Sherwood**  
Sherwood & Partners  
Representing LDI Interiors  
in California

lori@sherwoodandpartners.com  
949.353.0024



**Cecilia Staniec**  
LDI Solutions  
Creative Director

cstaniec@ldisolutions.com  
603.403.5900







More than business -- its personal. At B3W, we go beyond representing products -- we cultivate partnerships, solve challenges, and drive results. As certified professional manufacturer reps, we connect brands with opportunities, forging new relationships and strengthening existing ones. From the West Coast to the Rocky Mountains and beyond, we deliver so you can succeed.

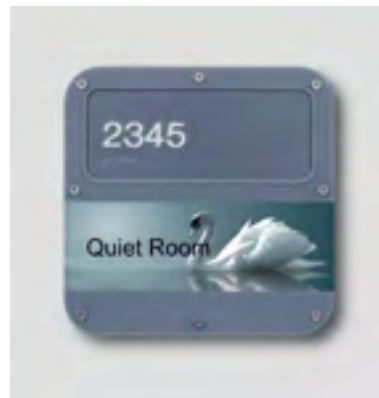
**Designed for Innovation and Adaptability.**  
TechWorks by SAFCO is a durable, flexible, and technology-integrated solution that empowers teams, educators, and innovators to collaborate, experiment, and adapt at the speed of change.



**Katie Parker Mallory**  
Sales Representative

kparker@b3w.com  
714.390.2048

**Curtains Closed on Germs.**  
Skyline's Mossa 3 Healthcare Divider is the sleek, pathogen-resistant alternative to outdated curtains. Made from nonporous tempered safety glass and durable alloy, it enhances privacy while keeping spaces clean, modern, and cost-effective.



**Designed for Patient Safety.**  
290's Safecare is engineered for behavioral health environments. Its ligature-resistant, tamper-proof design enhances patient safety while ensuring durability. Made from shatterproof polycarbonate with subsurface graphics, it's the only American-made sign product meeting New York State Office of Mental Health Safety Standards.

# Interface®

Carpet Tile | LVT | nora® Rubber Flooring

Providing care is at the heart of all that you do. We share your commitment to service.

Our portfolio of nora rubber, LVT, and carpet tile can cover every square inch of your facility with an integrated flooring system that supports staff and patients every step of the way—with safety, health, and performance in mind. Made with purpose, our products help you get more from your floor. Support positive outcomes and Evidence Based Design principals in healing environments with our space-specific solutions.

That's why we're Made for More™.

A perfect fit for your unique floor plan, our portfolio of products provides a truly seamless and integrated system—from the ground up.

From clinical spaces to waiting rooms and the corridors in between, Interface flooring systems can be tailored to any environment. Let us help you to make the most of your budget, creating spaces that stand up to your most demanding needs.



**Cabello Costa**

Account Executive,  
Los Angeles

cabello.costa@interface.com  
562.522.1291



**Blair Sharpe**

Account Executive,  
OC & San Bernardino

blair.sharpe@interface.com  
213.393.3947



**Melodie Virgil**

Account Executive,  
OC & San Bernardino

melodie.virgil@interface.com  
714.273.6977



**Stephanie Ennis**

Account Executive,  
San Diego & Riverside

stephanie.ennis@interface.com  
619.403.2719





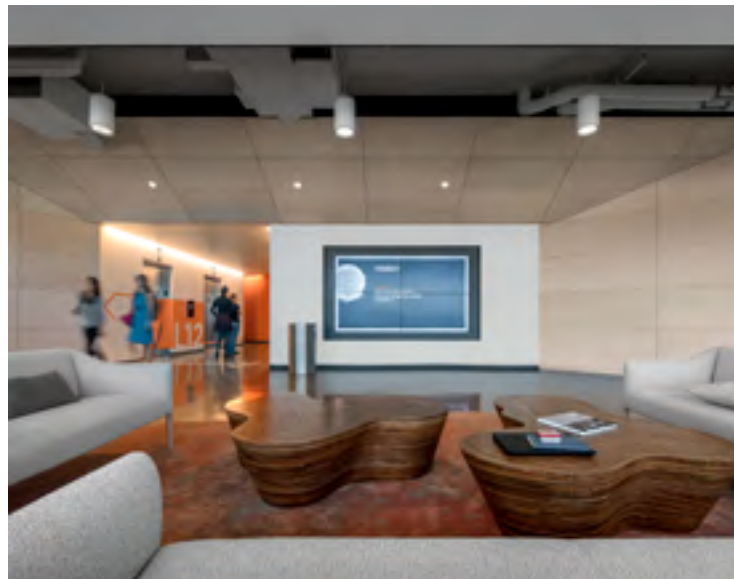
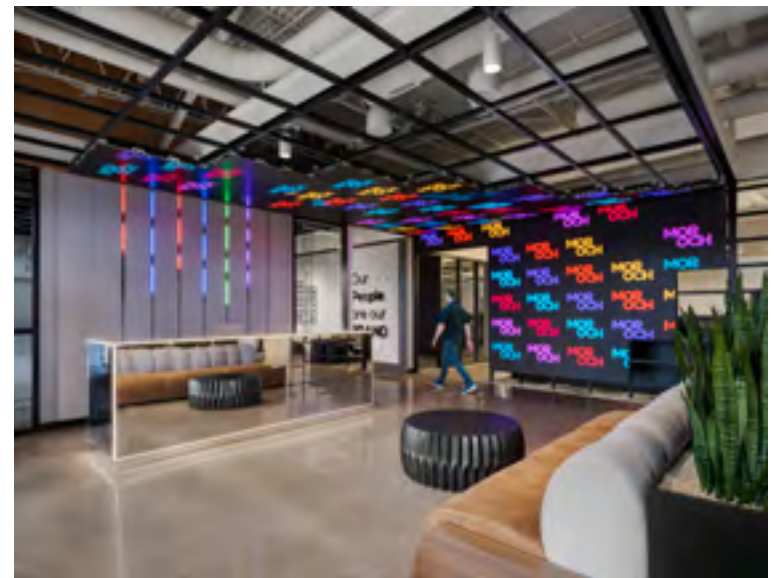


Tangram Technology focuses on creating innovative work environments that inspire people to excel. Technology is an impactful driver for change, critical to igniting innovation and competing in a global economy. Our team understands how technology can foster communication, support mobility, enhance collaboration and drive better business results. Our holistic approach creates a unified ecosystem that incorporates the latest audiovisual technology with acoustics, lighting and speech privacy.



**Eric Lockwood, CTS-D LEED AP**  
Managing Director

[elockwood@tangraminteriors.com](mailto:elockwood@tangraminteriors.com)  
310.430.3168



# Stinson®

At CF Stinson, we've been working hard keeping our customers satisfied for three generations. We are a Midwestern company with origins in textile distribution to architects, designers and furniture manufacturers. Since 1952, we have created innovative textiles for our clients in the all vertical markets, and are the market leader in Healthcare. We consistently exceed design, performance, service and sustainability standards, and have been awarded for our work through industry recognition. Our fabrics have evolved over the past six decades thanks to research, great design and technology. Our goal has always remained the same: to create interesting and innovative textiles that work.



**Amy Taylor**  
Textile Consultant,  
OC, IE & SD  
ataylor@cfstinson.com  
714.625.5835



**Jamie Nelson**  
Textile Consultant,  
LA & Las Vegas  
jnelson@cfstinson.com  
786.797.2212





# WIELAND

healthcare

Wieland builds Patient Room and Lounge furniture designed to assist caregivers and families. Industry-leading sleep sofas and patient recliners are available in a variety of styles. Wieland is committed to moving patient care forward. We look beyond the ordinary, seeking new solutions for patient spaces within various healthcare environments.



**Debbie Soldo**  
Healthcare Account Manager  
dsoldo@wielandhealthcare.com  
562.477.3779







Brewer Company is a leader in medical equipment innovation, providing premium exam tables and seating solutions designed for patient safety, ADA-compliant seat heights on all power exam tables, and long-term reliability. Our industry-leading 5-year warranty on PLUS power exam tables and fixed-height tables, along with award-winning designs like the Access High-Low PLUS and Versa exam tables, showcases our dedication to innovation and excellence. Built for the moments that matter most in healthcare, Brewer is the trusted choice for medical professionals nationwide.



**Pablo Fernandez**  
Regional Sales Manager  
pfernandez@brewercompany.com  
626.244.4493



# SitOnIt • Seating®

SitOnIt Seating is a leading manufacturer of commercial solutions in the U.S. – and #1 in task chairs. We have the fastest shipping and biggest textile program in the industry including moisture barrier, dual upholstery pattern match and healthier hospital compliant options. Even in the most demanding of healthcare environments- we engineer solutions to outlast and outperform with industry-leading ergonomics, durability and environmental and safety standards.



**Kathleen Neary**  
Business Development Manager  
kneary@exemplis.com  
310.709.8673



**Alyssa Barnett**  
Sales Rep  
abarnett@exemplis.com  
941.408.3649



Care and healing extend beyond hospital rooms. They're found in the quiet moments, in spaces where wellness and recovery converge, and in environments that empower both patients and caregivers. Our holistic product portfolio is thoughtfully designed to meet people's needs, wherever they arise.



**Alison Dold**  
Market Sales Manager

alison.dold@kimballinternational.com  
626.755.1390







Clarus is the largest glassboard manufacturer in the U.S., proudly based in Fort Worth, Texas. Known for innovation and quality, Clarus glassboards are fully customizable to meet the unique needs of any space.

Crafted with non-porous, antimicrobial glass, Clarus boards are 3x cleaner than traditional whiteboards and compatible with hospital-grade disinfectants—never harboring germs.

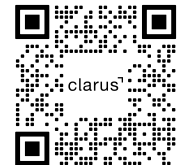
Engineered for durability, Clarus boards are scratch-resistant and maintain a pristine, spotless appearance even after years of heavy use. Backed by an industry-leading 20-year warranty, Clarus delivers performance that lasts.



**Lacey Lechner, Ind. IIDA**  
**Owner, DKMR Projects**  
 Los Angeles  
 laceylechner@dkmr.co  
 424.336.6866



**Kimberly McCready**  
Solé So Cal  
Orange County  
kimberly@solesocal.com  
562.533.6777



Notes

Dotted lines for note-taking on page 80.

Dotted lines for note-taking on page 81.

Notes

.....

.....

.....

.....

.....

.....

.....

.....

.....

.....

.....

.....

.....

.....

.....

.....

.....

.....

.....

.....

.....

.....

.....

.....

.....

.....

.....

.....

.....

.....

.....

.....

.....

.....

.....

.....

.....

.....

.....

.....

.....

.....



