

# EXECUTIVE MARITIME MANAGEMENT



POSTGRADUATE  
DIPLOMA 2026

# WELCOME

As President of the World Maritime University (WMU) I take this opportunity to introduce you to our highly regarded Postgraduate Diploma in Executive Maritime Management programme. Developed in collaboration with DNV, this programme represents an enhanced and contemporary iteration of our successful PGDip course that has been offered since 2015.

The realm of maritime transport, responsible for facilitating 90% of global trade, confronts both formidable challenges and promising prospects, particularly in the domains of technology and environmental sustainability. Navigating these complexities necessitates adept leadership and a profound comprehension of the stakes involved. To seize the opportunities and tackle the challenges, proficient maritime managers must be armed with cutting-edge knowledge and skills.

The Postgraduate Diploma in Executive Maritime Management is meticulously tailored to meet the demands of today's maritime managers operating within this complex seascape. It encompasses a range of pivotal subjects, including contemporary maritime economics and law, strategic financial tools, effective leadership and human resource management, as well as the intricacies of safety, security, maritime environmental technology, and sustainable practices. Our unwavering commitment to upholding the highest academic and professional benchmarks underscores our confidence that this Executive Maritime Management Postgraduate Diploma aligns seamlessly with your requirements as a capable manager within the dynamic shipping industry.

In an ever-changing maritime industry, it is more important than ever that its future leaders have a comprehensive understanding of technological and regulatory developments.

Reducing emissions, energy efficiency technologies, and rapidly advancing digitalization are changing the way that ships are operated, putting the skills and competencies of our people in focus more than ever. Competency gaps are emerging and many people throughout the maritime industry require training and new knowledge to adapt to the changing landscape.

These are unprecedented times in shipping and we at DNV recognize our responsibility in helping to bridge this gap. We understand that managing the energy transition safely requires the re-education and upskilling of our leaders. Complying with regulations is important but understanding them and integrating them into a company's DNA can be a springboard for future success.

Achieving these things will help managers to navigate the regulatory and technological road ahead with confidence and aid them in making informed decisions, such as which decarbonization paths their companies should take in the years ahead.

DNV has worked closely with World Maritime University in developing this important Postgraduate Diploma in Executive Maritime Management programme. We are confident that in combining the high academic standards of WMU with DNV's 160 years of experience and expertise in the maritime industry, we have created a programme which fully prepares graduates for the complexities that lie ahead in shipping.

We wish you luck on the journey ahead and look forward to seeing what kind of positive impact you can make on the maritime industry in the future.



Professor Maximo Q. Mejia, Jr.  
President, World Maritime University



Knut Ørbeck-Nilssen  
CEO DNV - Maritime

# INTRODUCTION

The innovative Postgraduate Diploma in Executive Maritime Management is offered by the World Maritime University (WMU), which was established in 1983 within the framework of the International Maritime Organization (IMO), a specialized agency of the United Nations, and by DNV, the world's largest ship and offshore classification society.

This truly unique programme combines the knowledge and experience of these two world-class institutions. With WMU, offering academic and research expertise, and DNV, contributing experience of best practice in the industry.

Managers in today's extremely competitive maritime industry need to cope with ongoing technological, environmental and regulatory developments. They must also be able to anticipate future developments and be proactive. It is essential that they have up-to-date skills and comprehensive knowledge to retain their competitive edge.

The Executive Maritime Management programme is designed to provide a "boot camp" for managers. Drawing on the strengths and expertise of both partners, it addresses current topics of critical importance in the maritime industry with a blended learning approach to operational, commercial and technical issues.

The online programme offers you flexibility to meet your needs. Fully web-based and using the latest e-learning technology, the programme can be completed at the learner's own pace from any location globally.

As you read through the following pages, you will learn more about the programme, its modules and instructors, and how to apply, among other important details.

We look forward to welcoming you to the Executive Maritime Management programme.



**Michael Manuel**  
Vice-President, Provost and  
Professor



**Bernhard Loebermann**  
Principal Training Advisor  
DNV - Maritime Academy

# THE PROGRAMME

## The modules

### 1) Fundamental Maritime Economics and Contemporary Maritime Law

The Introduction of Maritime Economics and Law

### 2) Shipping Market and Financial Management

Strategic Financial Tools

### 3) Management, Organizational Behaviour and Leadership

Human Resource Management, Organizational Processes and Leadership in a Maritime Context

### 4) Safe Shipping - Safety and Technology

Maritime Technology (Safer & Smarter)

### 5) Sustainable Shipping - Environment and Technology

Maritime Environmental Technology, Sustainability and Challenges

## Time frame

The programme runs for eleven months, from September to July every year. Every eight weeks, a module is completed with the submission of a written assignment before the next module begins.

## Entry requirements

- A minimum of five years' work experience
- Bachelor's degree in a relevant discipline or a Master Mariner / Chief Engineer qualification
- English language ability (both written and spoken): TOEFL score 80+ or IELTS score of band 6.0+ or Cambridge Advanced or Proficiency Examination (CAE or CPE) or Duolingo English Test score of 105 or another qualification (e.g., GCE O-level, WAEC, CXC) deemed equivalent by the Admissions Board

## Programme delivery

In order to maximise flexibility, the programme is offered by distance learning. The e-learning platform includes presentation videos and collaboration tools. For eight (8) ECs, each module is assessed through a group presentation (2 EC) and an individual essay (6 EC). A combination of quizzes are incorporated to enhance comprehension. In addition, webinars are organized for each module providing opportunities for interaction between the students and with the instructors.

## Study time

The programme lasts eleven months. Approximately every eight weeks, a module will be completed with a written assignment and a new module will start.

In total, you should consider around 1,000 hours for reading of material, learning, assignment preparation, discussion with peers, using collaboration tools, etc. This works out to about 200 hours per module (essentially 25 hours per week). We recommend thoughtful planning when you begin your studies. It is best to progress steadily through the modules rather than to try and complete everything at the end of eight weeks.

Under extenuating circumstances, it is possible to request an extension by making an official written request to the programme coordinators.

## Study material

For the distance learning mode you will have access to the e-learning platform. Access to the WMU online library is available.

Additional materials such as books, articles and other recommended readings not available through WMU's e-library are not included in the programme fees.

## University Qualification

When you have successfully completed all the requirements you will be awarded a Postgraduate Diploma in Executive Maritime Management, issued by WMU.

## Programme fees

The total fee for the programme depends on the payment plan you select. Either you pay in two instalments, with one invoice at the start of the programme and the second invoice before the third module, for a total fee of EUR 8,170 (EUR 1,634 per module). Or you may choose to pay on a per module basis and will receive five invoices, for a total fee of EUR 9,330 (EUR 1,866 per module).

For more than two participants from the same company a 10% discount per participant is offered. A special discount of 20% is offered for WMU alumni, DNV employees and employees of the IMO.

The fees include the necessary videos (available online) as well as the lecture guidance. Participants must cover the costs of any special arrangements they request.



The online connection with the university during the course was very effective, while the response of the professors including the faculty support was immediate. Moreover, the online connection with the students was corresponding to the reality of the shipping industry highlighting the difference of time zones and the hectic operations of the very busy professional participants.

**Class 2022, Nikos Polymeris**

## European Credit Transfer System (ECTS)

The Postgraduate Diploma carries a credit weighting expressed in European Credits (ECs). The complete programme consists of 40 ECs with each module consisting of 8 ECs. Under the European Credit Transfer System (ECTS), these credits can be transferred on to other programmes, at WMU and elsewhere, if they are approved by the receiving university.

Credits earned in the Executive Maritime Management (EMM) programme may be used in partial fulfilment of the requirements for another degree. At WMU, for example, you would be completely exempted from the first term of the standard Malmö-based Master of Science (M.Sc.) in Maritime Affairs programme, allowing you to complete it in just ten months.

## Terms & Conditions

The full Terms and Conditions are available at [www.wmu.se/emm](http://www.wmu.se/emm).

## How to apply

Submit your application through our website [www.wmu.se/emm](http://www.wmu.se/emm) under "Apply". Please also refer to the contact details under "Administration" in case of questions. Applications must be submitted by 31 August.

## Programme coordinators

If you have specific questions about the programme, please contact:

### WMU

Michael E. Manuel, [mem@wmu.se](mailto:mem@wmu.se)

### DNV

Bernhard Loebermann, [bernhard.loebermann@dnv.com](mailto:bernhard.loebermann@dnv.com)

## Administration

For general questions, registration for the programme, or any other support, please contact:

### Location 1 (Piraeus):

Dr Marina Papaioannou  
[marina.papaioannou@dnv.com](mailto:marina.papaioannou@dnv.com)  
 Phone: +30 210 4100200

### Location 2 (Singapore):

Janette Seetoh  
[mei-lin-janette.seetoh@dnv.com](mailto:mei-lin-janette.seetoh@dnv.com)  
 Phone: +65 91522 474

**Website:** [www.wmu.se/emm](http://www.wmu.se/emm)

# THE MODULES

## 1

### Fundamental Maritime Economics and Contemporary Maritime Law

#### The Introduction of Maritime Economics and Law

**This module examines** the fundamental issues and current challenges associated with the economic, legal and regulatory environment in the shipping sector. You will discuss the principles and trends in maritime markets and gain an understanding of maritime corporate and economic driving forces.

This module will address the legal framework of maritime transport with presentations on maritime conventions and the new regulatory development in the shipping sector. The module will also introduce private maritime law including, basic legal thinking and methodology, the legal notion of ship registration, fundamental principles in the carriage of goods by sea, the structure of a ship sale & purchase transaction, the exercise of ship security rights, principles of marine insurance and other main legal aspects of shipping.

#### Learning outcomes

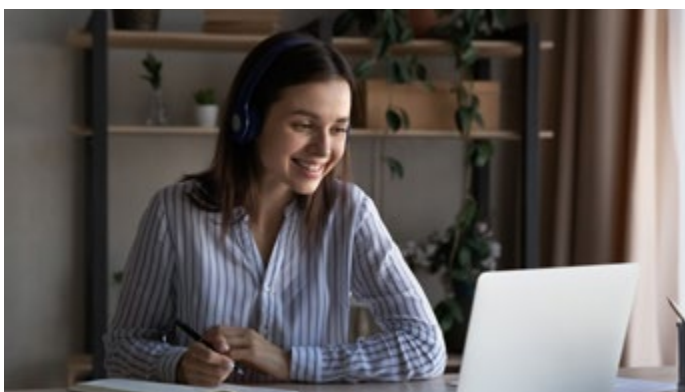
By the end of this module, you should be able to:

- Explain the fundamental relations between economy, trade and maritime transport
- Analyse the challenges and trends in maritime markets
- Give economic explanations to some major challenges in shipping
- Demonstrate a satisfactory knowledge of the fundamental elements of legal thinking and methodology
- Understand the doctrine of judicial precedent
- Identify and discuss the basic principles of maritime law within the wider context of the law and legal systems;
- Realize the significance of ship registration for the exercise of shipping activity and appreciate the existence of fraudulent registration and related practices
- Identify the various types of sea carriage contracts, whether evidenced in charterparties or bills of lading

- Understand the functions of a Bill of lading and the Carrier's liability for cargo in maritime transport. Understand the mechanism of limitation of liability and how it relates to the special regimes of liability limitation (e.g. HVR)
- Understand the basic structure of a ship sale and the rights stemming from it in favour of the seller and buyer. This includes a fundamental understanding of the sale and purchase transactions.
- Realize the significance of security rights on a ship. Understand the function and exercise of a maritime lien in contrast to the exercise of mortgage rights. Identify the legal consequences of the exercise of security rights in a judicial sale.
- Describe the concepts of risk and loss, insurability of risk and scope of cover in the common types of insurance in maritime transport.
- Identify the basic legal duties in ship management.

#### Course outline

- Economic globalization and shipping
- Shipping market
- Maritime cost
- Ports and their impact on shipping
- Maritime freight market
- Economics of marine environment protection
- Introduction to Legal Thinking & Methodology I + II
- Basic Principles of Law I + II
- Ship Registration I + II
- Introduction to Sea Carriage
- Carriage of Goods by Sea I + II + III + IV
- Ship Sale & Purchase
- Ship Security Rights I + II
- Principles of Marine Insurance
- Ship Management - Legal Perspective



"I thoroughly enjoyed the EMM programme and the mode of study. The topics provided a variety of insights of relevant and current topics in the shipping industry. The modules allowed me to gain a concise and better understanding of economic, environmental, and regulatory aspects readily applicable for my work in the maritime sector. I especially appreciated the flexible mode of 'on demand' viewing of the lectures, a perfect way to fit my studies into a busy work schedule."

**Class 2019, Katrin Urbach**

# 2

## Shipping Market and Financial Management

### Strategic Financial Tools

**This module presents** an overview of the shipping markets and their unique characteristics, examines the challenges and issues in the current maritime sector, in terms of the financial management and investment appraisal, the availability of bank finance and bank credit analysis, as well as the alternative sources of ship finance, including Asian financing, Export Credit Agencies, private and public equity, high-yield bond markets, leasing and mezzanine ship finance. Advanced knowledge of shipping financial management and the impact of economic variables on shipping business organizations' financial operations are analyzed. Finally, the module concludes by providing various business and financial risks associated with any shipping company and developing several risk management solutions to achieve economic sustainability. You will receive in-depth training through several hands-on exercises and case studies to enable you to develop, appraise, negotiate, and select alternative shipping projects.

#### Learning outcomes

By the end of the module, you should be able to:

- Understand the fundamentals of the shipping markets.
- Have an overview of the various maritime database for real-time market information.
- Appraise the ship finance sector in terms of markets, participants, sources of ship finance, current trends and future challenges
- Implement financial analysis for investment in the shipping industry
- Analyze the cost of capital and the capital structure of maritime organizations
- Develop a deep understanding of shipping bank processes when extending a shipping loan facility
- Evaluate alternative sources of capital for shipping projects
- Evaluate the appropriateness of private and public equity and high-yield bonds
- Identify business and financial risks for a shipping company
- Develop financial risk management solutions to improve the company's performance

#### Course outline

- Shipping markets and data: cyclicity, timing and forecasting
- Capital budgeting and investment appraisal
- Cost of capital and capital structure in shipping
- Financial analysis of a shipping project
- Bank shipping loans and bank syndication
- Bank credit policy and analysis
- Bank loan monitoring, legal considerations and workouts
- Issuance of a shipping bank loan
- Alternative sources of ship financing (public and private equity and debt, leasing, etc.)
- Derivative and Risk Management



"I have been working in the maritime industry for over two decades. Aside from a new perspective and fresh inspiration, the course gave me valuable insights into continuous technical, regulatory, and commercial development, thanks to the expertise and experience of course professors. During my EMM studies my research skills drastically improved and I developed a strategic way of going about projects. Being the Marine TRP for an oil company I was able to add value to large EPIC projects which were successfully completed."

**Class 2021, Rajeev Jitendran**

# 3

## Management, Organizational Behaviour and Leadership

### Human Resource Management, Organizational Processes and Leadership in a Maritime Context

**The maritime industry** at all levels is, on the one hand, operated and managed by people within the context of organizations. On the other hand, it also affects people, either adversely or beneficially, whether they are internal or external to maritime organizations (public or private). In this module you will gain a fundamental understanding of the nature of organizations and the processes inherent in them as they relate to individuals and groups. The module will also increase learners' appreciation of the significance of management and leadership in organizations when organizational effectiveness, sustainability and productivity are in view. Trends and issues related to maritime labour within the broad context of human resource management are addressed. Additionally, a discussion of the importance of ethics and corporate social responsibility in contemporary maritime affairs is carried out. The module is intended to give you a well-grounded appreciation of the need to manage people optimally and the understanding and evaluative skills to do so.

#### Learning outcomes

By the end of the module, you should be able to:

- Evaluate the merits/demerits of different theoretical approaches to management and leadership
- Explain the functions of management and their diversity of expression in different kinds of organizations
- Evaluate processes for the optimization of individual behaviour and teamwork in an organizational setting
- Identify and apply various models of change management and change leadership to organizations in transition
- Explain why organizations need to learn and how this can be optimally done
- Discuss the application of corporate social responsibility (CSR) and Environmental, Social, and Governance (ESG) in the maritime industry.
- Explain diverse principles of human resource management and apply them to labour challenges in the maritime industry

#### Course outline

- Principles of Management
- The evolution of management theory
- Functions of management
- Organizational Behaviours and HRM
- HR Management Principles, policies, procedures and systems
- Ethics and corporate social responsibility
- Leadership concepts and Applications



# 4

## Safe Shipping - Safety and Technology

Maritime Technology (Safer & Smarter)

**This module explores** two fundamental aspects of the modern maritime domain: safety in shipping and the digital transformation. You will learn about various safety and security challenges, how to identify them and how to manage risk. From port state control to piracy and cyber-security, you can expect to be well versed in key issues faced by maritime regulators and maritime industry around the world. The second half of the module looks at assorted aspects of the digital transformation of the maritime world, to understand capabilities and limitations, opportunities and threats of key technologies, from A.I. to autonomous shipping, from Digital Twins to Virtual Reality. This module will hone your personal and corporate skills, and significantly improve your maritime industry credentials.

### Learning outcomes

By the end of the module, you should be able to:

- Identify key safety and security issues relevant to the maritime domain
- Understand the role of IMO conventions, codes and instruments in mitigating the risk of safety and security challenges
- Appreciate the core concepts of accident investigations
- Realise importance and concepts of cyber security at sea and on shore

- Understand capabilities and limits of A.I. technologies for maritime applications
- Understand capabilities and limits of Digital Twin technology
- Understand capabilities and limits of Virtual/Augmented Reality
- Understand capabilities and limits of autonomous ship technology

### Course outline

- Sea, shipping, ships and safety
- OHS Introduction to MLC, ISM and ISPS
- Risk Assessment in ISM Context
- Risk Management and Risk Assessment Methods
- ISPS Code as an Instrument for Managing and Controlling Risk
- Risk Management in the IMO
- Maritime Cyber Security
- Accident investigation in the maritime industry
- Artificial Intelligence
- Digital Twins
- Cyberships
- Digital Twins
- Virtual Reality



After completing the programme I am equipped with a much better and updated knowledge, I feel more confident. I can speak better about the latest challenges that the industry is facing, and how these will affect the shipping business. The course exposed me to me different perspectives, and a glimpse of how things are headed in the distant future.

WMU's distance learning was made more personal and interactive through group presentations via Zoom, and webinars with our professors. We got to meet each other virtually, and it was really good. Through our group presentations, via Zoom, I got to enrich my views by watching other groups' points of views. Within my own group, we challenged each other's ideas - so basically it was much like a normal classroom - you get to learn from your professors and from your classmates, who by the way - are all sitting from different parts of the globe, some even onboard the ship. So you get diverse points of view about the maritime industry.

**Class 2022, Rosina Visleno**

## 5

## Sustainable Shipping - Environment and Technology

Maritime Environmental Technology, Sustainability and Challenges

**Although seaborne transportation** is the most environmentally friendly mode of transportation, environmental impacts brought about by shipping activities, e.g. air emissions from international shipping or waste created in the shipping processes, have been under increased scrutiny. The environmental pressure coupled with volatile and high fuel prices has changed the market and become the trigger for innovative technologies and solutions.

This module focuses on environmental aspects of the shipping industry - from carbon footprint to ballast water management, from antifouling to oil spills, along with relevant technologies and challenges faced in the aim of achieving sustainable maritime development. It examines environmental issues, associated present and anticipated legislation, and the available and expected options to address the issues with their associated pros and cons as well as management aspects of implementation and monitoring.

### Learning outcomes

By the end of the module, you should be able to:

- Explain environmental and economic pressures, air emissions (pollutants and GHGs), externalities and international responses
- Describe energy management in the maritime industry and MARPOL Annex VI (Chapter IV), and energy efficiency options during ship design and operation
- Discuss life-cycle considerations of retrofitting and decision making under trade-off situations

### Course outline

- Environmental awareness & market context
- Emissions to air
- Energy efficiency standards & regulations
- Retrofitting, LCA & Decision Making
- Energy efficiency options in design and operation
- Performance monitoring
- Renewable energy assistance
- Biosecurity & Ballast Water Management
- Biofouling & Antifouling
- Waste Management & Ship Recycling
- Tanker safety
- Acoustic pollution



### Assignments

Each of the five modules is individually assessed via group presentations and assignments and an individual written assignment. Assignments must be submitted or resits scheduled before moving on to the next module. All submitted assignments (group and individual) will be assessed by the instructors using the same criteria as the WMU MSc programme. More information may be found in the WMU Reference Guide for Students.

# TIME SCHEDULE

LEARNING	MODULE 1	MODULE 2	MODULE 3	MODULE 4	MODULE 5
	Fundamental Maritime Economics & Contemporary Maritime Law	Shipping Market and Financial Management	Management, Organizational Behaviour and Leadership	Safe Shipping - Safety and Technology	Sustainable Shipping - Environment and Technology
Distance Learning	14 Sept 2026 - 15 Nov 2026	23 Nov 2026 - 18 Jan 2027	25 Jan 2027 - 21 Mar 2027	29 Mar 2027 - 23 May 2027	31 May 2027 - 26 July 2027
Graduation Ceremony at WMU in Malmö, Sweden: Autumn 2027					



# INSTRUCTORS



**Professor Volker Bertram**  
**Specialist, DNV**

- Specialist for practical hydro-dynamics and ship design for efficiency and economy
- Consults and teaches on the whole range of environmental aspects of ships and shipping



**Dr Shuo Ma**  
**Professor, WMU, retired**

- Specialized in research on shipping and port economics, policy and management and operations, marine environmental economics and shipping-port related logistics



**Dr Satya Sahoo**  
**Assistant Professor, WMU**

- Expert in Shipping Management and Logistics, Maritime Financial Management and Derivatives
- Research work in Ship Finance, Economic Analysis of Shipping Markets, Freight & Commodity Derivatives, and Maritime Asset Management



**Dr George Theocharidis**  
**Professor, WMU**

- Maritime law expert
- More than 10 years industry experience
- Expertise in shipping litigation, shipping finance, corporate & international disputes



**Bernhard Loebermann**  
**Specialist, DNV**

- Expertise in IMO regulations and requirements
- Expert in training development in various maritime topics, including environmental protection issues
- Longstanding advisor to technical experts, administrations and shipping companies for training and education-related matters in the maritime field



**Ioannis Alexopoulos**  
**Director, Eurofin Group**

- Shipping financier with practical experience in different forms of ship finance
- Advisory roles to shipowners and shipping banks in relation to ship financing matters

# INSTRUCTORS



**Dr Michael Ekow Manuel**  
**Professor and Nippon Foundation**  
**Chair; Academic Dean**

- Holds licence as Master Mariner (Captain) after eleven years at sea
- Consultant and experience in maritime affairs and administration at the highest international level



**Dr Aykut Ölcer**  
**Professor, Nippon Foundation Chair,**  
**Director of Maritime Research, Head**  
**of Maritime Energy Management**

- Expertise in ship design, marine production management, shipyard organization, naval architecture, ship stability, ship propulsion, shipyard information systems and optimization in engineering design



**Dr Jens-Uwe Schröder-Hinrichs**  
**Vice-President, Strategic Initiatives**  
**and Professor**

- Expertise in Higher Education and Capacity Building, Implementation of IMO Instruments, Technology and Labour in Transport, Maritime Safety, Maritime Risk



**Jan Haul**  
**Specialist, DNV**

- In the maritime industry since 1992
- Served on the program committee of Europe's largest cyber security conference
- Over 18 years' experience in consulting on IT, compliance and management systems



**Dr Kirsten Rognstad**  
**Specialist, DNV**

- Senior principal specialist for ISM and ISPS
- Main responsibilities related to the ISM and ISPS certification on behalf of flag state administrations and training of auditors



**Ulf Siwe**  
**Communication Officer**  
**Swedish Maritime Administration**

- Ulf Siwe has a M.Sc. and a long experience from the IT industry
- He currently is in charge of communications for the Sea Traffic Management (STM) concept
- Ulf is the author of several scientific papers on e-navigation and IT infrastructures

These are the members of the programme development team. Additional instructors may be added.

# FLEXIBILITY IN THE MODE OF DELIVERY

The Executive Maritime Management programme is designed by maritime professionals for maritime professionals and offers vital flexibility through distance learning. So how does the whole process work - from showing interest to successful completion of the Diploma?

The first step is to register for the programme. You can do this on our website [www.wmu.se/emm](http://www.wmu.se/emm) using the electronic registration tool. There you are asked to fill in all the necessary information and you can directly upload all required documents. We recommend having them ready as scanned copies. During the registration process you will be asked to choose one of the DNV Maritime Academies as a first point of contact in case of questions. This does not influence the delivery of the programme itself, as the whole Diploma is designed to be delivered by distance learning.

Don't worry if one document is missing when you register. We will contact you about your application to ensure all documents are received in due course.

After you submit your registration it is forwarded to the WMU Admission Board where an academic check is conducted with the goal of giving you academic clearance. If all entry requirements are fulfilled, a full academic clearance can be expected. In case something is missing, but acceptable, for example, the language test can only be provided once the first module has already started, a conditional acceptance may be granted. In this way you may start the programme, but you must satisfy the defined condition within an agreed timeframe or you may not continue the course.

Once the programme has started each module has a duration of eight weeks. Each module ends with a written assignment that must be uploaded into the system by the last day of the module.

If you foresee a challenge in following the given timeframe, for example, due to unexpected travelling for work, please contact us as soon as you are aware of any difficulties. An exemption

may be granted if the reasons are acceptable. Simply not delivering the assignment on time would lead to a failure grade for that module.

If you do not pass the module's assignments within the same academic year, you can apply for a resit. Resit exams are available to students who fail a module's individual written assignments. Upon receiving notification of a failing grade, students may request a resit within the same academic year. Once the resit is confirmed, a new assignment will be provided and assessed.

Resit assignments are only available to students who have failed the original assignment; they cannot be taken to improve a passing grade or enhance the overall GPA. Students are allowed up to three resits per module. Beyond this limit, a fee of \$100 per credit applies for any additional resits. If you are not able to take it within that academic year you may need to retake the whole module in the next year, but this will lead to additional costs.

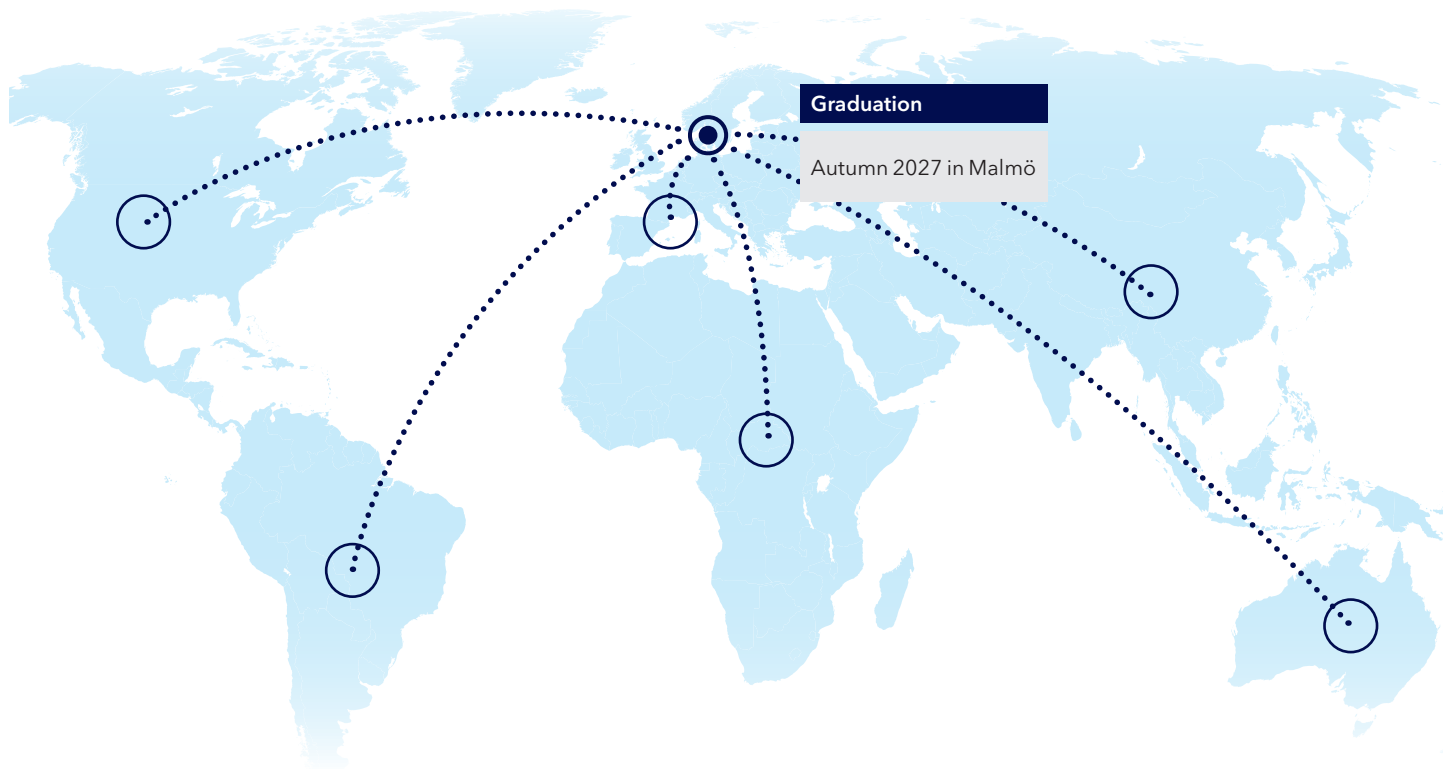
The programme targets the same academic level as is applied for the Master students of WMU. It is important that you take the necessary time to plan your progress through the studies properly. Depending on your level of previous knowledge you should calculate up to 25 hours study time per week for the programme. If you see in your plans that you cannot work through all five modules, you should contact us immediately. Upon written request, and depending on your individual circumstances, there may be an option to defer one or more modules to the next academic year. This option is limited to a total extension of three consecutive years starting from your first year of enrolment.

Once you have successfully passed all five modules you will be invited to the WMU Graduation Ceremony in Malmö where you can receive your Postgraduate Diploma.

If you have any questions before registration, or during the programme, please do not hesitate to contact us.

"The PGDip in Executive Maritime Management was an extremely valuable choice, as it provided, through theoretical elements and practical cases, a 360° picture of maritime management aspects, setting a comprehensive framework that can be always applied and adapted while dealing with disparate issues within an ever-changing context. The multicultural environment and reliability of a well-recognized international training Institutions such as WMU and DNV's Maritime Academy were definitely an added value."

**Class 2019, Gerardo Daniele Miscuzzi**



## Graduation at WMU

Once you have fulfilled all of the requirements of the Postgraduate Diploma in Executive Maritime Management, you will be invited to participate in the annual WMU Graduation Ceremony in Malmö, Sweden.

At this graduation ceremony, you will join the WMU Ph.D., M.Sc. and Postgraduate Diploma graduates for the conferring of degrees by the Chancellor of WMU, the Secretary General of the International Maritime Organization (IMO).

Graduates from WMU are proven to be leaders of tomorrow in the maritime sector. Graduates leave WMU not only with the knowledge they need to succeed, but also with an extended network of contacts from around the world. Once you have completed the Postgraduate Diploma in Executive Maritime Management you will be part in the global network of WMU graduates.

"After becoming a senior marine engineer officer onboard LNG vessels, I wanted to broaden my horizon with a postgraduate degree in the maritime field without taking a break from my seagoing career. The EMM programme gave me a perfect platform where I could pursue my studies along with my normal job schedule. The course included likeminded people from the industry and expanded my professional network. The programme helped me to develop a deeper understanding of the subject matter, thus empowering me to see the industry from an improved perspective."

**Class 2021, Apurv Siddharth**



"I thoroughly enjoyed the EMM programme and the mode of study. The topics provided a variety of insights of relevant and current topics in the shipping industry. The modules allowed me to gain a concise and better understanding of economic, environmental, and regulatory aspects readily applicable for my work in the maritime sector. I especially appreciated the flexible mode of 'on demand' viewing of the lectures, a perfect way to fit my studies into a busy work schedule."

**Class 2019, Katrin Urbach**

## Customized delivery

Are you interested in having the Postgraduate Diploma specifically tailored for your employees and your needs?

Companies in the sector have expressed their appreciation of the breadth of our programme as it provides comprehensive coverage of the various topics relevant to maritime managers. Take the example of a technical expert hoping to move into a leadership position but lacking the requisite managerial skills; this Postgraduate Diploma can play a decisive role in equipping individuals to handle both the demands and challenges of this next step.

There are many reasons for companies to seek out professional development opportunities for their staff. You may be looking for ways to ensure that you keep the best people in your organization and give them new career opportunities. You may want to upgrade skills across the board, to give your organization a competitive edge over others. The EMM Postgraduate Diploma can strengthen the commitment of your employees and offer them career opportunities while raising the professional competence of your whole leadership team.

Customized delivery of the EMM Postgraduate Diploma offers the opportunity to gather all your organization's managers globally into one programme. They will all be connected via the distance-learning platform, enabling them to work on similar projects, questions and challenges at the same time. The discussion platform makes it easy to exchange views on a variety of subjects so participants can collaborate across borders, both national and organizational.

Putting a special focus on your employees will help you to distinguish yourself from other employers in the market, providing the opportunity for your team to engage in advanced maritime education with other maritime professionals and under the guidance and leadership of international experts.

Like the open enrolment, customized programmes offer full access to the distance-learning platform, access to WMU's e-library and teaching and supervision from an international team of faculty. Successful students receive an academic qualification awarded by WMU. With customized delivery we offer customized pricing and payment options as well as the possibility of company specific opening and closing workshops to enhance the organizational learning and experience of the participants.

Ideally, customized programmes include at least 15 participants. Please contact us if you would like to discuss options for a customized delivery of the EMM programme. We would be happy to meet you in person so we can clarify your objectives and decide how we can best support you to achieve them.

## Website

You can find the most up-to-date information on our website: [www.wmu.se/emm](http://www.wmu.se/emm)





### **About DNV - Maritime Academy**

DNV is actively engaged in the field of training and development, with its own dedicated Maritime Academy. For over 19 years, DNV's Maritime Academy has been offering courses in the field of shipping and continues to work towards its motto "Building Competence".

Operating in more than 100 countries, our Academy managers in 15 key locations are dedicated to enabling you to effectively improve your business performance and to assist you in finding the best solutions for your daily business - to become safer, smarter and greener.

DNV - Maritime Academy  
Brooktorkai 18  
20457 Hamburg  
Germany  
academy.maritime@dnv.com

[www.dnv.com/maritime-academy](http://www.dnv.com/maritime-academy)

### **About WMU - World Maritime University**

The World Maritime University (WMU) in Malmö, Sweden is established within the framework of the International Maritime Organization, a specialized agency of the United Nations. The mission of WMU is to be the world centre of excellence in postgraduate maritime and oceans education, professional training and research, while building global capacity and promoting sustainable development. WMU's vision is to inspire leadership and innovation for a sustainable maritime and oceans future. WMU is an organization by and for the international maritime community and is committed to the United Nations 2030 Sustainable Development Agenda.

World Maritime University  
Fiskehamngatan 1  
20124 Malmö  
Sweden  
pgd@wmu.se

[www.wmu.se/distance-learning](http://www.wmu.se/distance-learning)