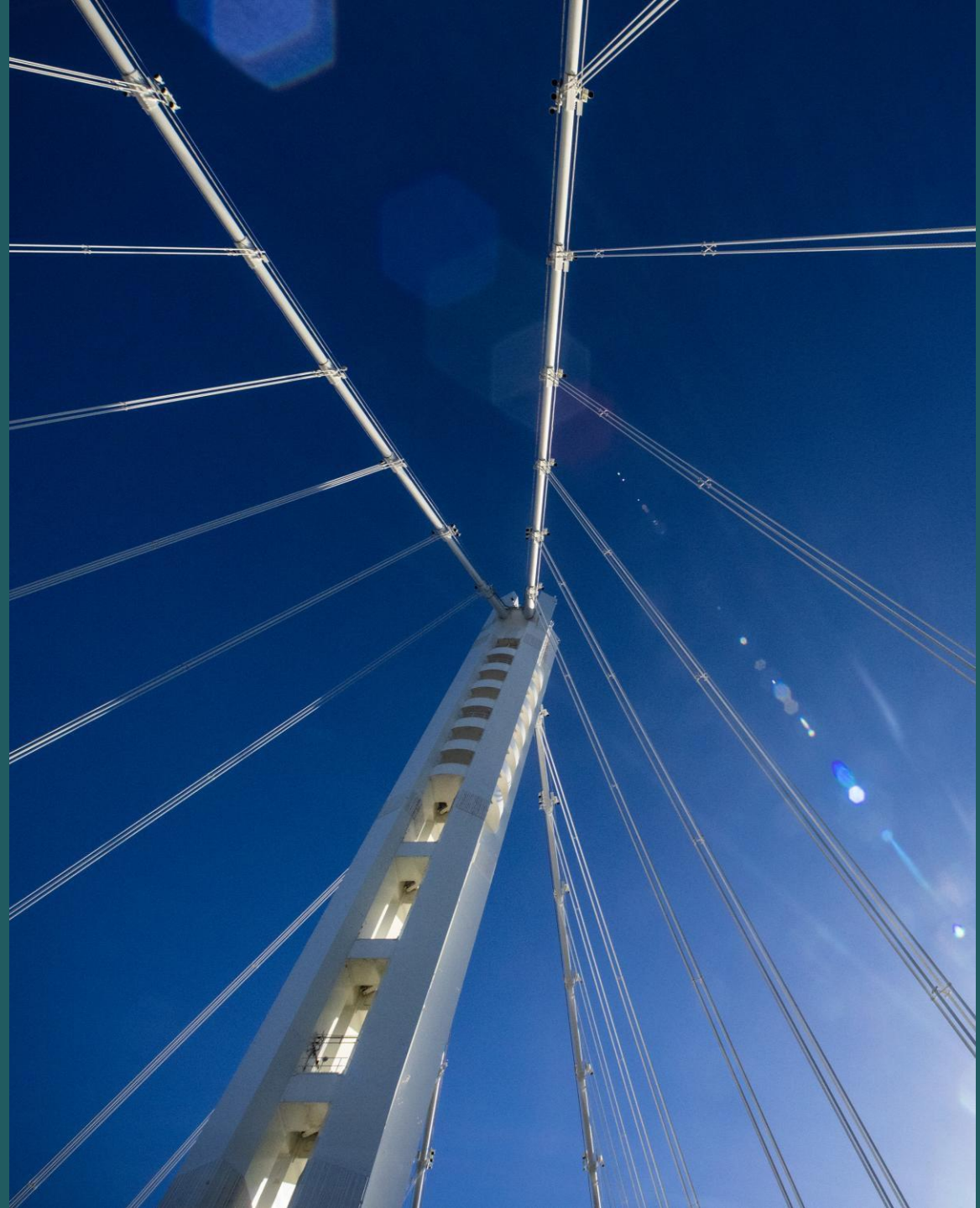


# SAF Market Development

Lauren Kickham  
Director, Markets and Investments



# Our opportunity for outsized **impact**

## **Microsoft sustainability**

Taking care of our own environmental footprint

## **Customer sustainability**

Accelerating progress through technology

## **Global sustainability**

Catalyzing global impact



“As Microsoft continues to grow and innovate, our commitment to environmental sustainability remains a core value... As we enter the second half of the decade, Microsoft remains steadfast in our dedication to achieving the company's 2030 environmental sustainability commitments.”

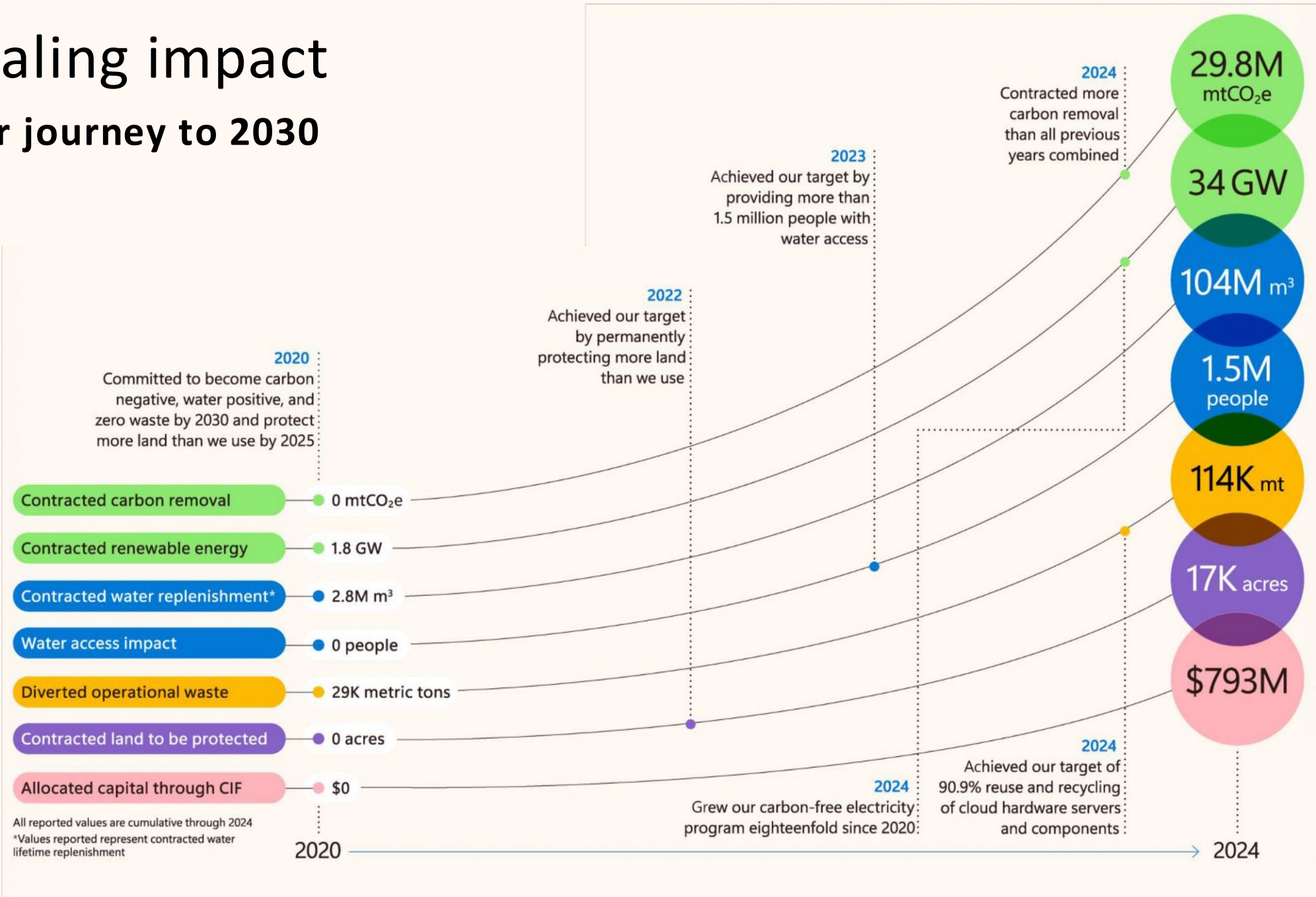
2025 Environmental Sustainability Report





# Scaling impact

## Our journey to 2030

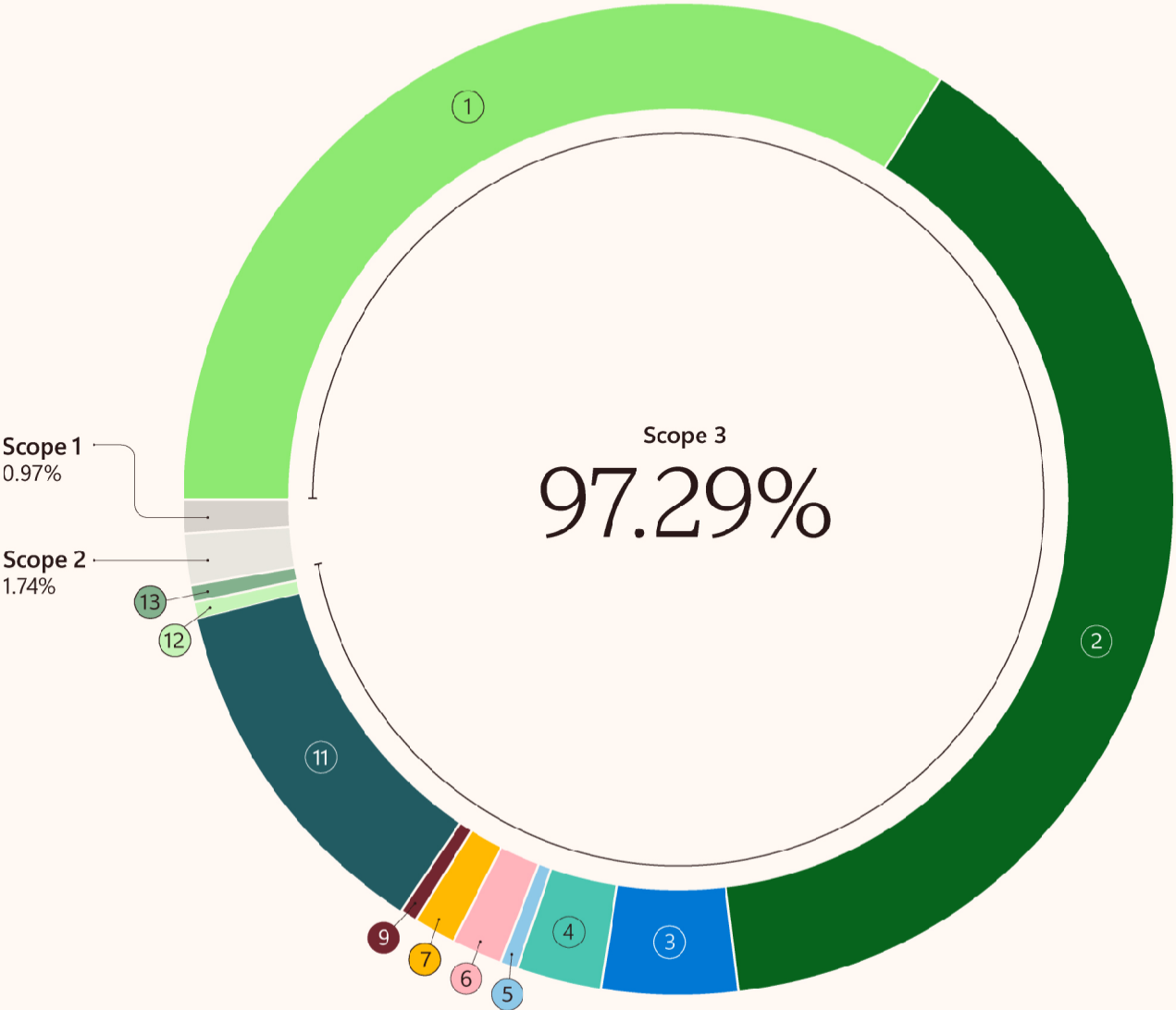


Our total emissions have **increased by 23.4%** compared to our 2020 baseline, led by AI growth and cloud expansion.

Scope 3 Categories

1	Purchased Goods and Services	34.04%
2	Capital Goods	40.83%
3	Fuel- and Energy-Related Activities (Market-Based)	4.40%
4	Upstream Transportation and Distribution	2.69%
5	Waste Generated in Operations	0.05%
6	Business Travel	1.70%
7	Employee Commuting	1.40%
9	Downstream Transportation and Distribution	0.29%
11	Use of Sold Products	11.83%
12	End-of-Life Treatment of Sold Products	0.02%
13	Downstream Leased Assets	0.04%

Scope 2 and 3 emissions included in this chart are market-based.  
Scope 3 emissions are management's criteria values.



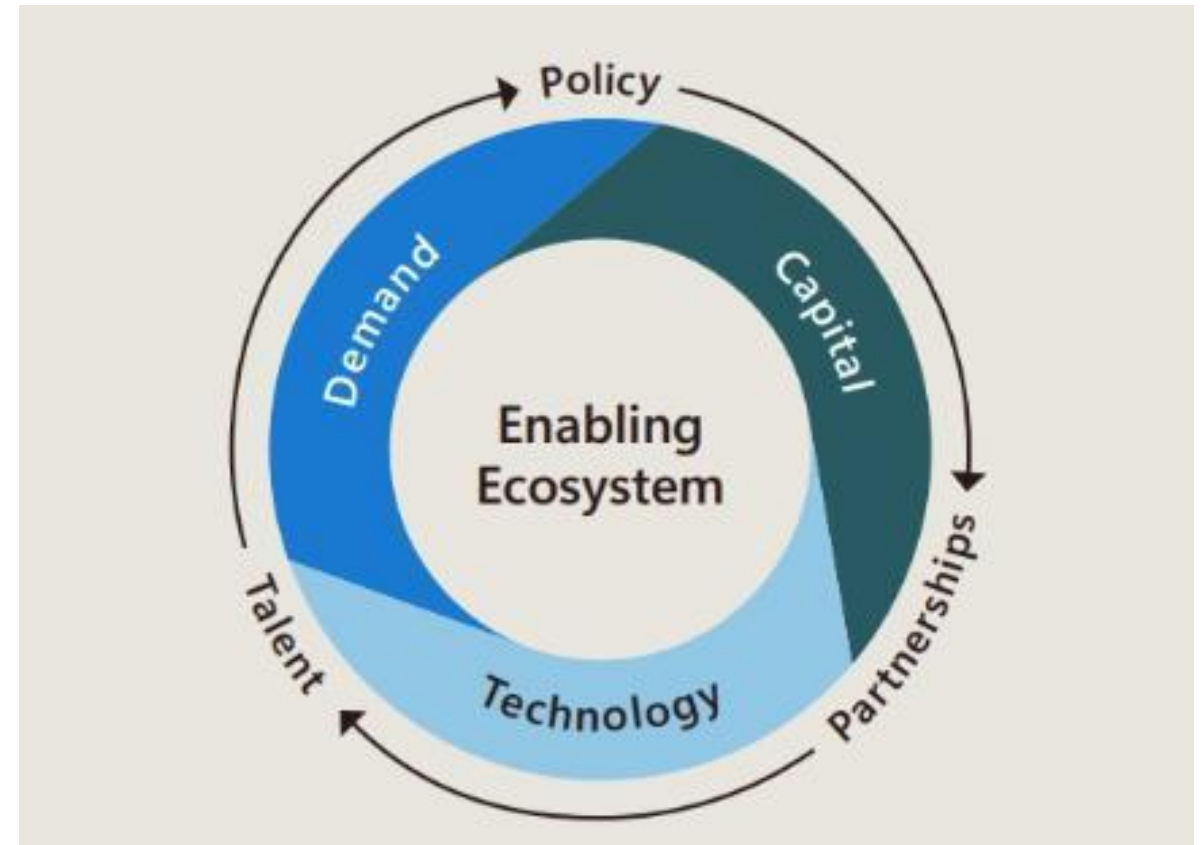
# Scaling solutions depends on a flywheel

Key ingredients to make a market...

- A scalable **supply** of technology solutions
- Strong and growing **demand** signals
- **Capital** for development and deployment

Accelerated by...

- Policies that mitigate risk and incentivize growth
- Partnerships and talent
- An enabling ecosystem for efficient execution



# Building markets through investment and procurement

2019

First procurement  
of SAF

2021

Founding member  
SABA

>15

Contracts  
signed for SAF &  
SMF

2023

FOAK long term SAF  
contract signed

2024

Reported lower  
emissions under  
management criteria



Thank you