

Climate Solutions – Airport Role

Stephanie Meyn
Seattle-Tacoma Int'l Airport

CETI Decarbonization Forum -
*Addressing Aviation's Climate
Impacts*

January 29, 2026

Menu of Sustainability Innovation Topics

At SEA:

- Exploration of airport role in sustainable aviation fuel (SAF)
- Using machine learning to detect and enforce low-emission behaviors on aircraft (APU run time, use of ground systems)
- First airport in world to require carbon emission performance standard for ride-hailing app vehicles (Uber, Lyft, etc). EV incentives in 2020.

SEA's Role



Exploration of Airport Role

Infrastructure Integration

- Airport role in providing receiving, storing & blending facilities for SAF

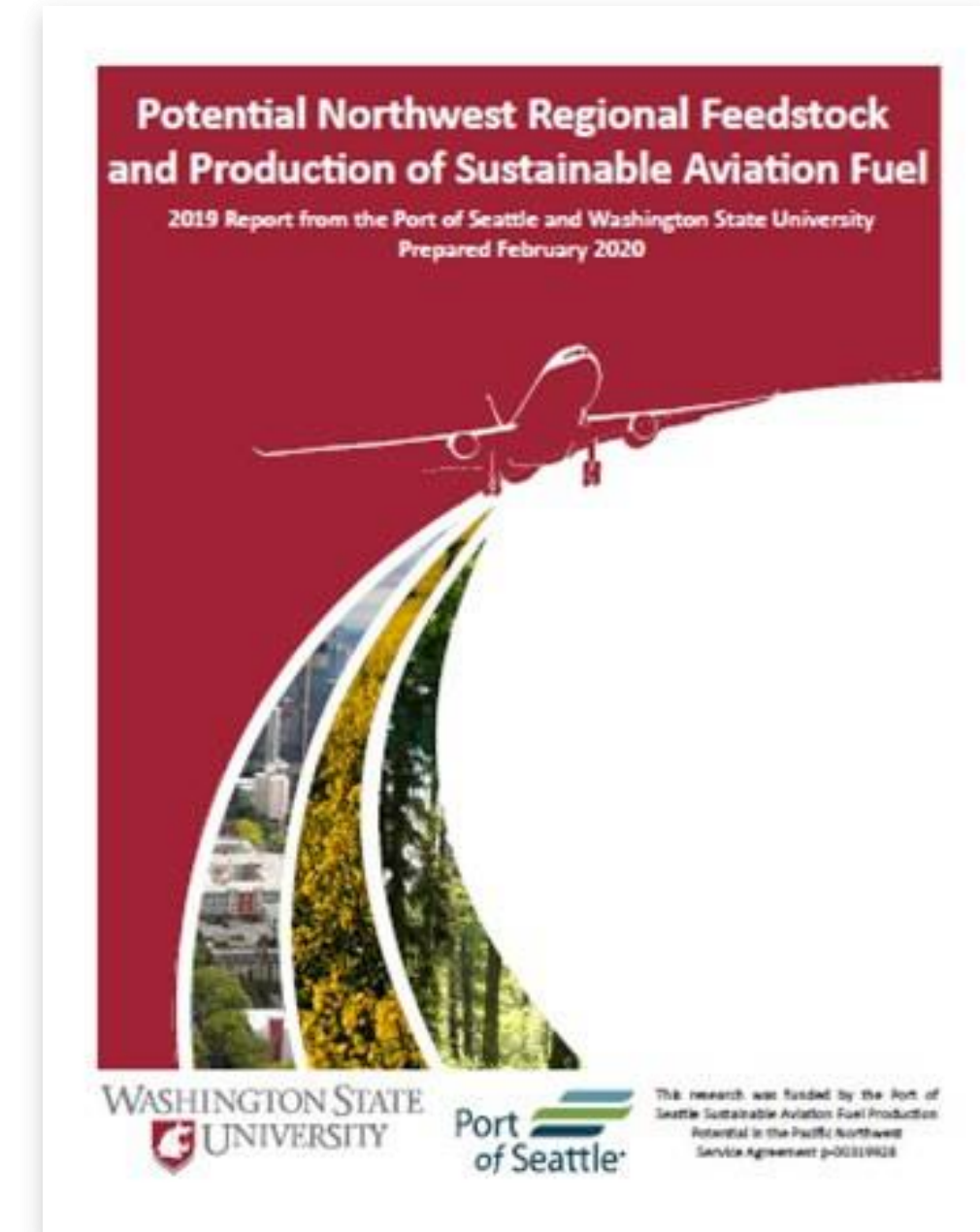
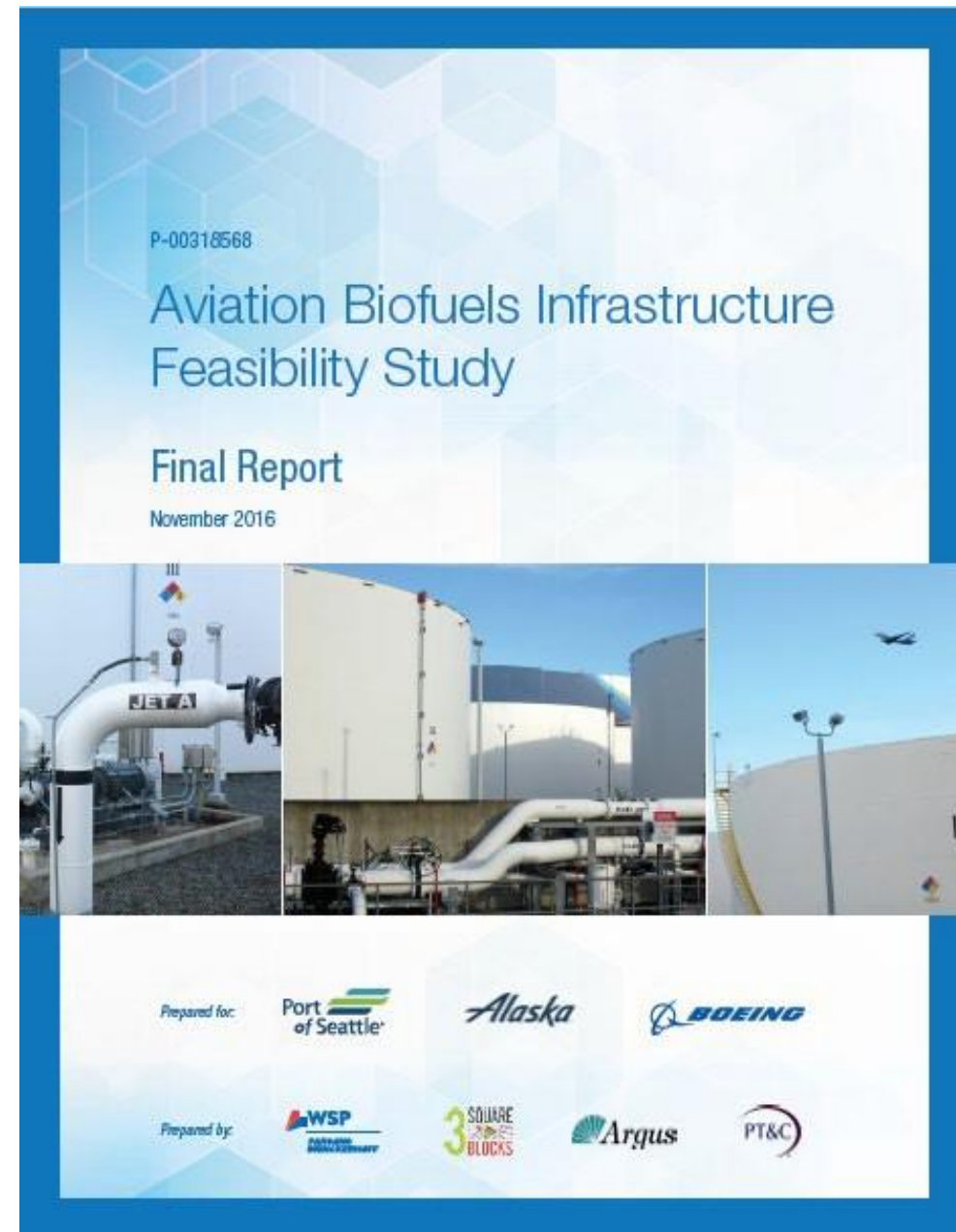
Incremental Cost

- Airport role in covering incremental cost of SAF
- Airport role in developing funding programs (corporations, passengers, airlines)

Attracting SAF Production Facilities

- Airport role in financing
- Airport role in developing business case for near-term production

Lots of Studies Specific to SEA & Region



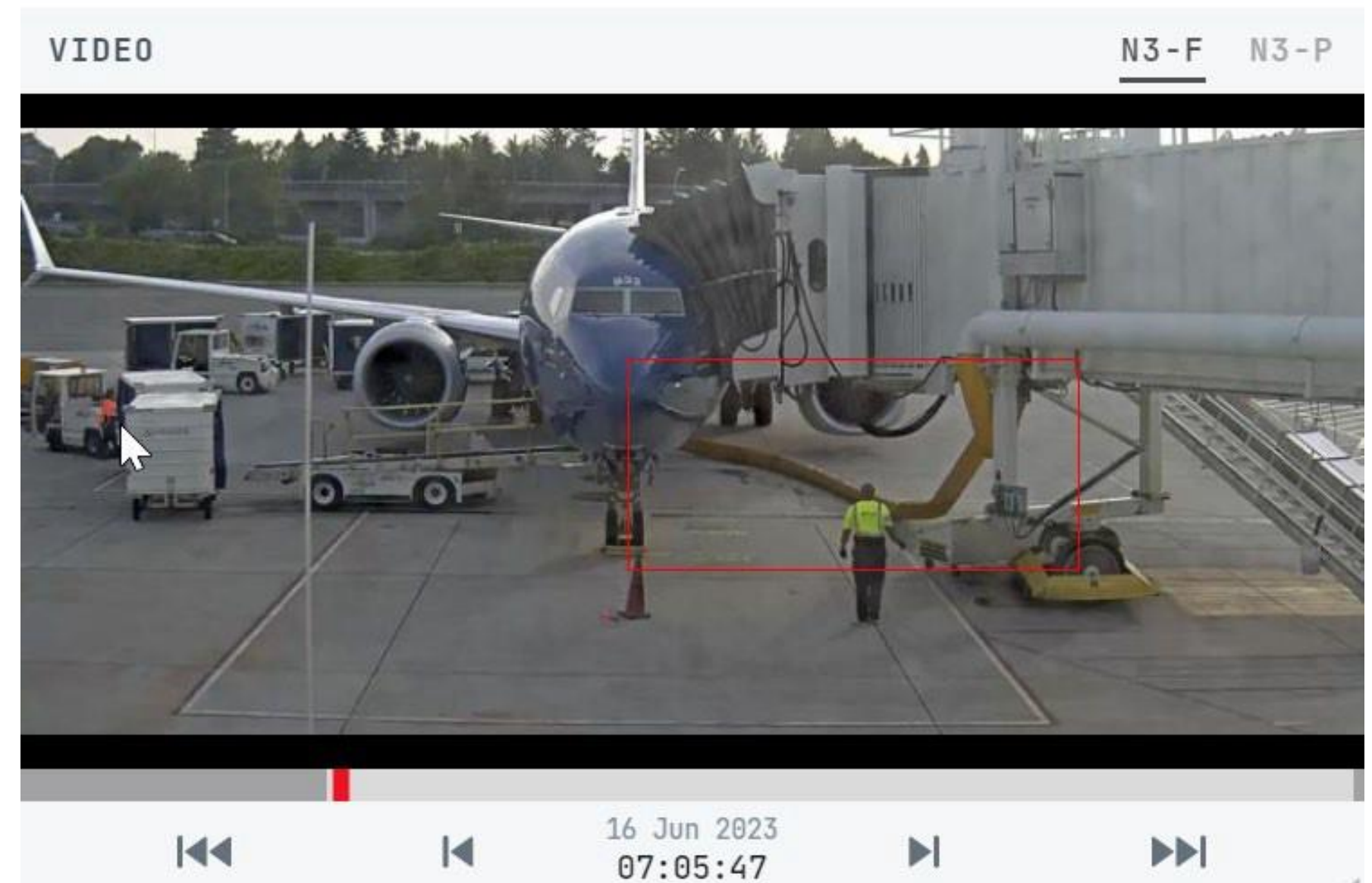
Other Emission-Reduction Technology

- Using machine learning/AI to detect activities & reduce emissions
- Detect connections of ground systems
- Detect aircraft auxiliary power unit (APU) excess use
- **75,000 tonnes CO2 per year reductions at SEA alone**

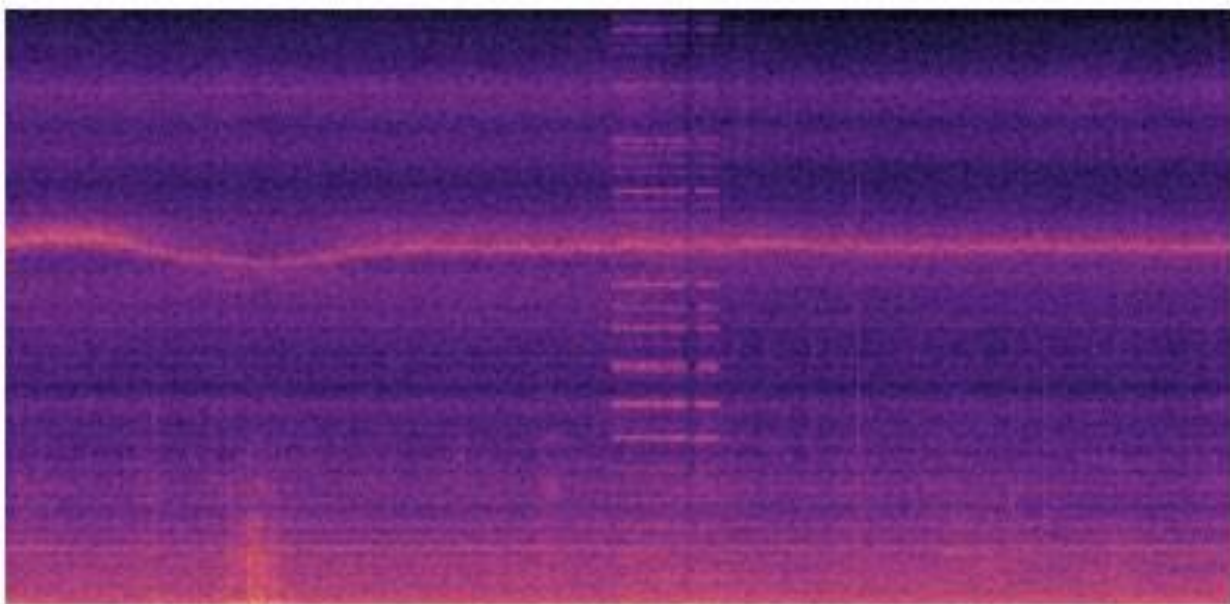
PC Air Hose inflated



EVENT	CONF	TIMESTAMP	
PC Air Hose inflated	100%	16 Jun 2023 07:05:43	>



APU using sound-based detection





Seattle-Tacoma
International
Airport

Thank You!

Meyn.S@portseattle.org