

# Kaiser Permanente

Antelope Valley Health Care Facility  
Lancaster, CA

Elemax™ AWB Coating  
Enables Innovation in  
Remote Facility



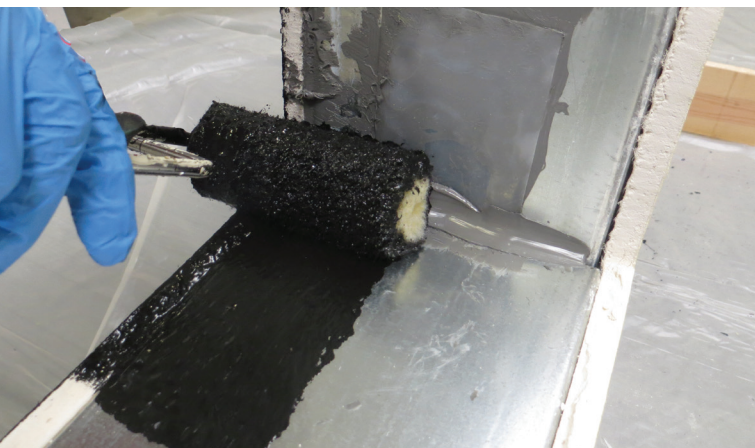
## Savvy Desert Design

Kaiser Permanente, one of the largest not-for-profit health providers in the United States, planned a net-zero energy use facility to bring specialty medical services to patients in California's remote Antelope Valley. The design featured a large, custom curtain wall to streamline air flow and a turbine to generate energy in this desert region where wind gusts can reach 90 mph and temperature fluctuates greatly from day to night.

Kaiser's architecture team chose Elemax Air and Water-Resistive Barrier (AWB) coating to stand up to these daily air and waterresistive barrier stressors, and help achieve energy efficiency to meet a goal of LEED (Platinum) Certification.

## Elemax Air and Water-Resistive Barrier Coating

This seamless 100% silicone AWB family of products provides breathable, long-term air and water protection for the building envelope.



*"Elemax AWB was the only solution for us. No other AWB stays as resilient against daily, continuous exposure to the elements."*

**Patricia Reyes Cappelli**  
Kaiser Permanente Project Director,  
Architect and Director of Design

## Ambitious Open Joints

Kaiser's plan called for an open joint rain screen system with 8" gaps to accommodate the winds—much larger than the 2" gaps typical of such buildings. This size meant that the harsh desert sun and rain from occasional storms would come in direct contact with the selected AWB throughout the building's life.

The 100% silicone formulation of Elemax AWB coating is able to withstand these conditions. Durable, waterproof, and permanently flexible, Elemax coating helps the building excel in form and function with an open joint façade appropriately sized for the wind load. "Elemax AWB was the only solution for us," said Patricia Reyes Cappelli, Kaiser Permanente Project Director, Architect and Director of Design. "No other AWB stays as resilient against daily, continuous exposure to the elements."

## Superb Stability and Waterproofing

Because Elemax AWB coating is permeable, it can stop bulk water penetration while regulating air and water flow through the building envelope, which can help reduce a building's energy use by up to 35%, a key to meeting Kaiser's net-zero energy and LEED goals. Its stability and waterproofing feature also offers better control of moisture penetration that can lead to mold, mildew, rot, and dust—crucial in a healthcare setting.



The Kaiser Permanente facility opened in September 2014. Elemax silicone coating has helped the facility realize daily energy savings and water protection benefits while supporting comfort and wellbeing for the patients and staff inside.

**NOTE:** Performance results are those of reported accounts, and are not to be relied upon as typical or expected under any other circumstances. Performance results will vary depending upon a number of factors. Prospective customers should rely solely upon their own evaluative techniques to determine what results are attainable and optimal to their specific needs. Further note that MPM is not endorsed by or affiliated with the owner(s) of Kaiser Permanente.



Contact us for additional information.

[siliconesforbuilding.com](https://siliconesforbuilding.com)

THE MATERIALS, PRODUCTS, AND SERVICES OF MOMENTIVE PERFORMANCE MATERIALS INC. AND ITS SUBSIDIARIES AND AFFILIATES (COLLECTIVELY "SUPPLIER"), ARE SOLD SUBJECT TO SUPPLIER'S STANDARD CONDITIONS OF SALE, WHICH ARE INCLUDED IN THE APPLICABLE DISTRIBUTOR OR OTHER SALES AGREEMENT, PRINTED ON THE BACK OF ORDER ACKNOWLEDGEMENTS AND INVOICES, AND AVAILABLE UPON REQUEST. ALTHOUGH ANY INFORMATION, RECOMMENDATIONS, OR ADVICE CONTAINED HEREIN IS GIVEN IN GOOD FAITH, SUPPLIER MAKES NO WARRANTY OR GUARANTEE, EXPRESS OR IMPLIED, (i) THAT THE RESULTS DESCRIBED HEREIN WILL BE OBTAINED UNDER END-USE CONDITIONS, OR (ii) AS TO THE EFFECTIVENESS OR SAFETY OF ANY DESIGN INCORPORATING ITS PRODUCTS, MATERIALS, SERVICES, RECOMMENDATIONS, OR ADVICE. EXCEPT AS PROVIDED IN SUPPLIER'S STANDARD CONDITIONS OF SALE, SUPPLIER AND ITS REPRESENTATIVES SHALL IN NO EVENT BE RESPONSIBLE FOR ANY LOSS RESULTING FROM ANY USE OF ITS MATERIALS, PRODUCTS, OR SERVICES DESCRIBED HEREIN. Each user bears full responsibility for making its own determination as to the suitability of Supplier's materials, services, recommendations, or advice for its own particular use. Each user must identify and perform all tests and analyses necessary to assure that its finished parts incorporating Supplier's products, materials, or services will be safe and suitable for or waive any provision of Supplier's standard Conditions of Sale or this Disclaimer, unless any such modification is specifically agreed to in a writing signed by Supplier. No statement contained herein concerning a possible or suggested use of any material, product, service, or design is intended, or should be construed, to grant any license under any patent or other intellectual property right of Supplier covering such use or design, or as a recommendation for the use of such material, product, service, or design in the infringement of any patent or other intellectual property right. Before purchasing or using any Momentive products, please visit [www.siliconeforbuilding.com/LegalDisclaimer](https://www.siliconeforbuilding.com/LegalDisclaimer) to view our full product and sales disclaimer. Copyright 2024 Momentive Performance Materials Inc. All rights reserved.



Licensed  
Partner